



Community Newsletter | July 2025

Gippsland Offshore Wind Farms

Welcome to the July issue of the Ørsted community newsletter

This issue highlights some exciting updates on our Gippsland Offshore Wind Farms and a look ahead at what's coming next including key partnerships and important updates on our site works near McGaurans Beach.

We thank community members who have come along to July's offshore wind days at Toora, Loch Sport and Woodside and shared their thoughts with our team and asked questions about our project.

- ➡ Front cover: Australian delegation at Ørsted's Taiwan operations
- ➡ Head of Hub Management Chia Fang Li provides delegates an overview of how the Taiwan operations and maintenance base is run



Knowledge sharing across the Asia-Pacific

Ørsted Australia recently welcomed representatives from Gippsland to its operations hub in Taichung, Taiwan.

The visit offered a first-hand look at how Taiwan has successfully developed its offshore wind infrastructure and workforce, providing valuable lessons for Gippsland's emerging industry. Delegates toured the hub that supports the construction and operation of offshore wind farms and saw local staff in action across a variety of roles – engineering, marine traffic control, and logistics – highlighting the job opportunities this industry can create.

During the visit, delegates explored the massive port facilities, observing turbine components such as 115 metre blades and tower sections ready for assembly and transportation. With Taiwan's offshore wind projects about five years ahead of Australia's developments, the group gained valuable insights into workforce upskilling and infrastructure development that could bolster Gippsland's ambitions.

The visit was a powerful example of knowledge sharing across borders, demonstrating our commitment to fostering skills and infrastructure in Gippsland's offshore wind sector. By learning from Taiwan's success, Ørsted and local partners are preparing to unlock new opportunities for jobs and sustainable energy solutions in Victoria.



- ➡ Delegates at Ørsted's Taichung operations and maintenance base in Taiwan

Partnering for the future

Ørsted has partnered with TAFE Gippsland to kickstart Australia's offshore wind energy workforce, paving the way for Gippsland to become a leader in clean energy innovation.



⤴ TAFE Gippsland's Director Strategy Quality and Learning Brad Beach and CEO Laura Macpherson, with Ørsted's CEO APAC region Per Mejnert Kristensen, Stakeholder Relations Manager Amy Dynes, and Head of APAC Project Development Soren Westergaard Jensen

This partnership focuses on providing local training programs, industry engagement, and creating a skilled workforce tailored to the demands of offshore wind projects. From guest lectures and student site visits to hands-on projects, this collaboration aims to inspire students and workers in the region to seize opportunities in this emerging sector.

With plans to operate offshore wind projects in Australia for up to 30 years, Ørsted is committed to creating thousands of local jobs and fostering a diverse workforce. By teaming up with TAFE Gippsland, Ørsted is taking a crucial step towards empowering the community and ensuring Gippsland thrives during the clean energy transition.

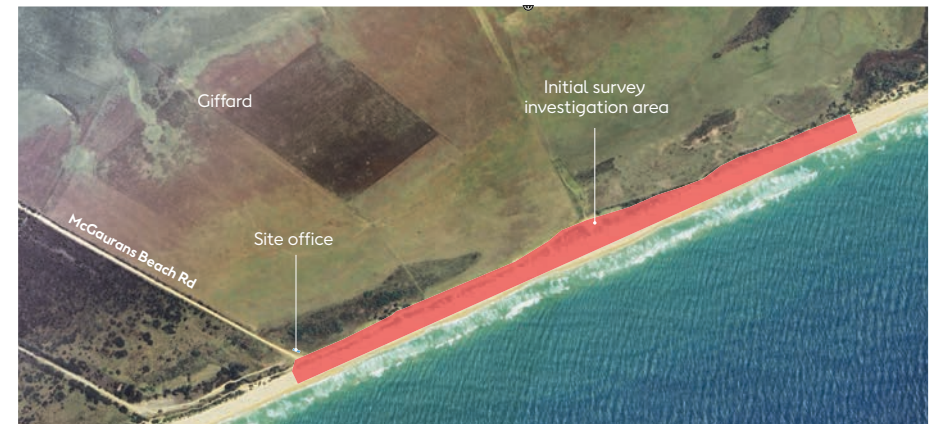
Onshore landfall surveys at McGaurans Beach

Work is continuing near McGaurans Beach Road and Ninety Mile Beach as Ørsted conducts geological surveys to determine the best landfall site for connecting our offshore wind projects to the electricity grid.

These surveys, running until mid-September, include acoustic testing, soil thermal assessments, and borehole drilling to map underground conditions. The team will also install a small observation borehole to monitor groundwater levels for one year.

Ørsted is working closely with local authorities to ensure minimal disruption, maintaining public access to the beach and McGaurans Beach Road throughout the project. Temporary fencing will secure work areas and affected sites will be restored to their original condition.

If you have any questions or concerns, contact us at infoaustralia@orsted.com



Strong and consistent winds, high seas and shallow waters

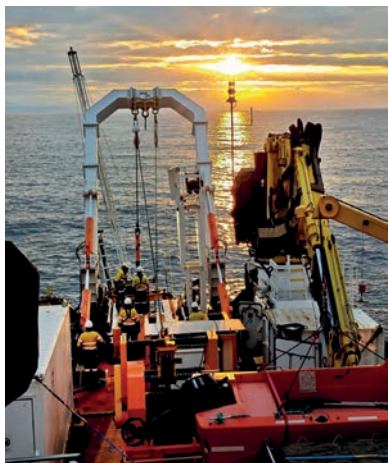
After months of offshore feasibility investigations, we have no doubt that Bass Strait has world-class wind resources!

Our marine environmental baseline surveys are well underway with sophisticated devices that measure wind, weather and ocean conditions now anchored across our feasibility licence areas for up to two years.

The devices are mapping wind, wave, current and meteorological conditions. One of these devices is Ørsted's purpose-built uncrewed surface vessel (USV) deployed for the first time outside Europe to carry out extended surveys at sea.

The data is being analysed and will help the project team:

- understand the composition of the seabed and subsurface conditions
- map the marine environment
- shape the project's design,
- minimise environmental impacts.



We're working closely with local marine users to ensure our surveys are conducted smoothly and with minimal disruption.

Ørsted is committed to keeping everyone informed through regular updates and Notices to Mariners as new activities get underway.



Specialist crews and equipment for geotechnical testing



Floating Light Detection and Ranging (FLiDAR) buoy departing Port Anthony for deployment at sea



Ørsted USV in Corner Inlet leaving Port Welshpool



Minister Lily D'Ambrosio with Charee Smith and Tanya Taylor from Gunaikurnai Land and Waters Aboriginal Corporation inspect the USV on the port



Ørsted USV: a vessel or buoy, or both?

Ørsted recently deployed its cutting-edge uncrewed surface vessel (USV) from Port Welshpool in South Gippsland. The USV can navigate autonomously and anchor itself at our survey sites 56 km offshore, collecting critical data for extended periods. This groundbreaking technology significantly reduces safety risks and costs compared to traditional methods while enhancing the precision of marine data gathering.

Joined by Minister Lily D'Ambrosio, the Ørsted team showcased why this innovative hybrid of a vessel and buoy is revolutionising metocean surveys in the challenging waters of Bass Strait.



Acknowledgement of Country

Ørsted acknowledges the Gunaikurnai people's spiritual connection to their lands, waters and sky. Since the first sunrise, the Gunaikurnai people have cared for and nurtured this sacred land on which our projects will be developed.

We will embrace the legacy of their ancestors by valuing the resilient culture they have maintained for thousands of years. Together, we will build an authentic relationship that enables their direct benefit.

Contact

Contact us by visiting our website or email us.

www.ørsted.com.au/contact-us
infoaustralia@ørsted.com

Let's get to work

Follow us



ørsted.com.au