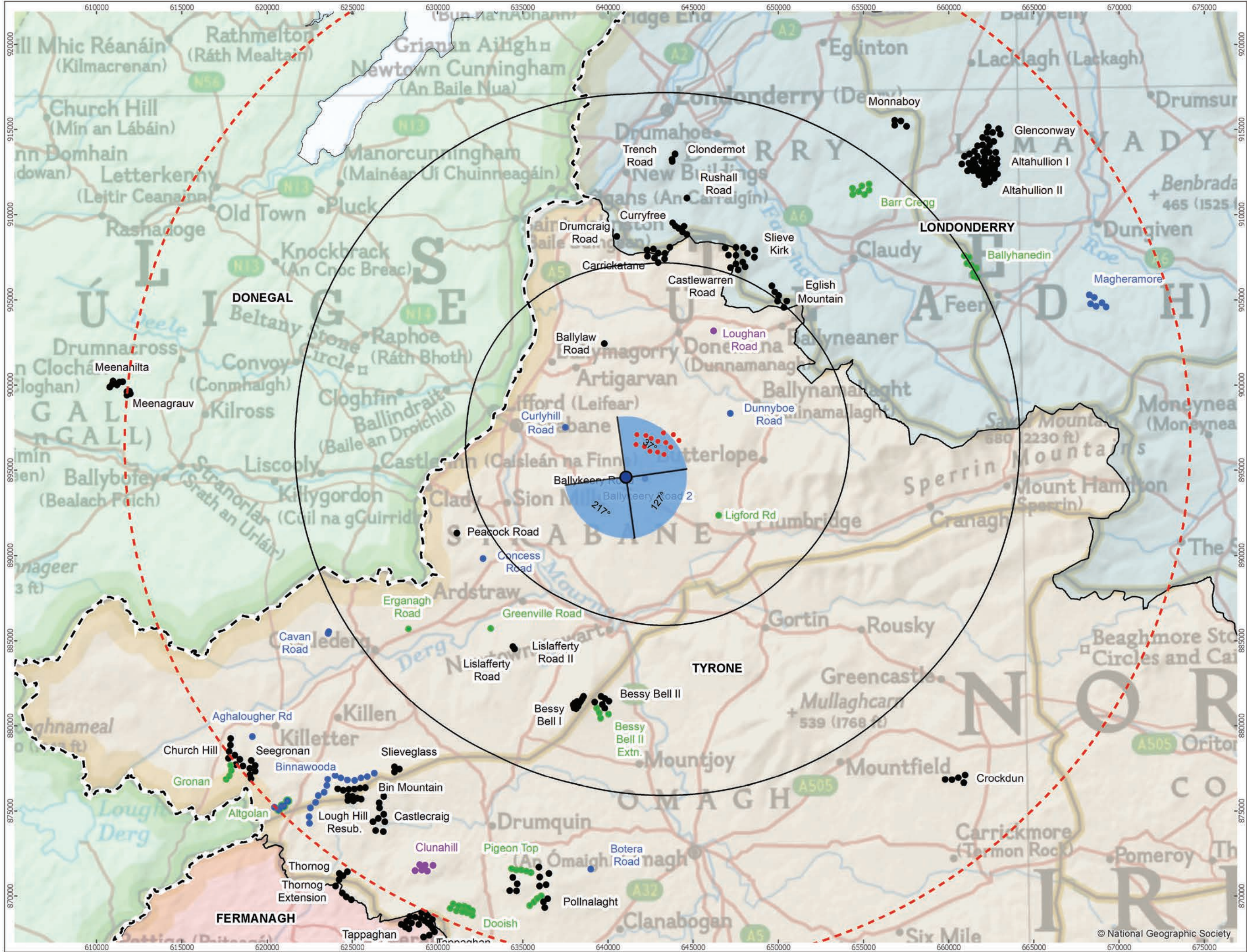
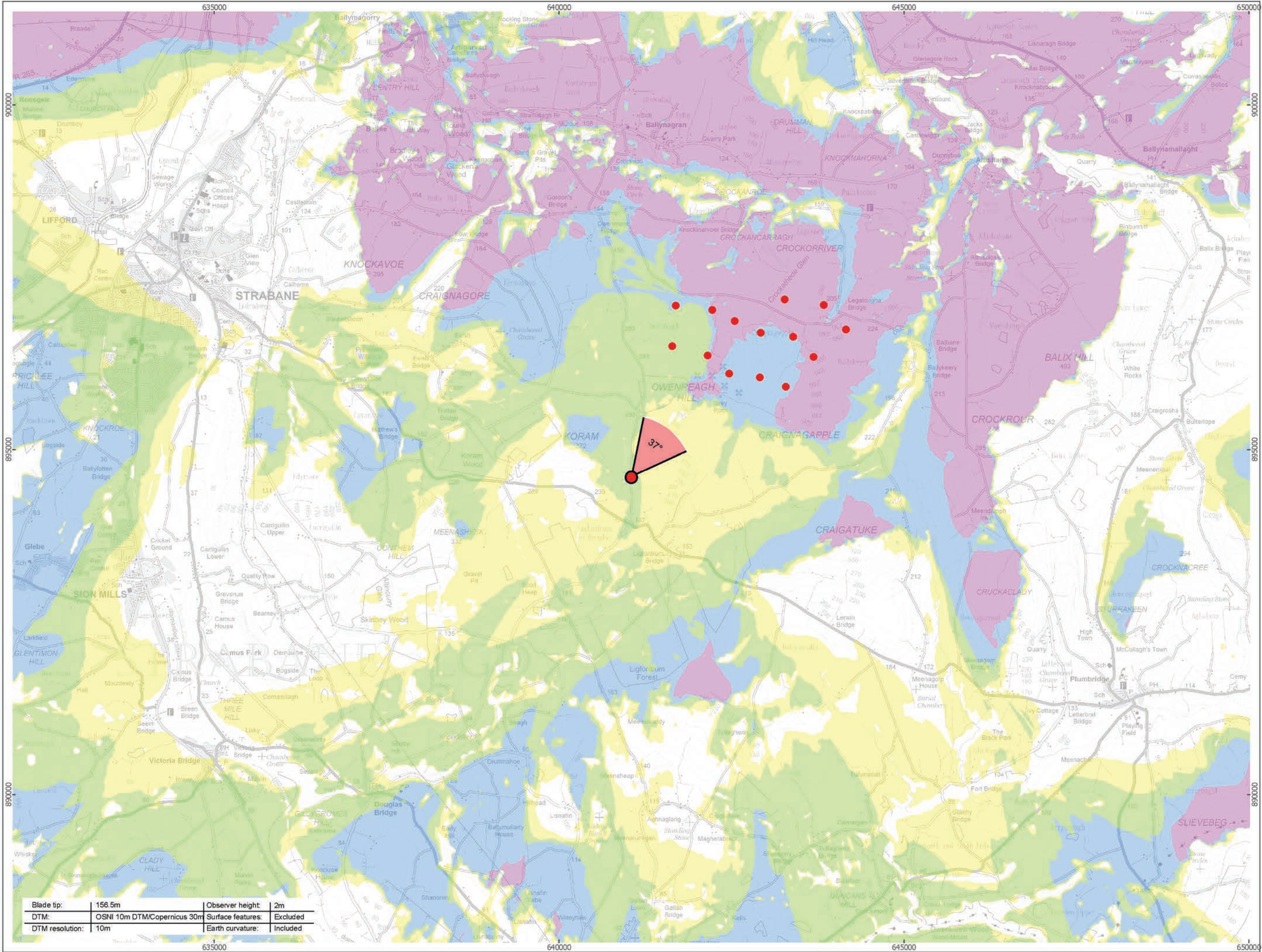


Ordnance Survey (Ireland) License No. AR 001/2021 © Ordnance Survey (Ireland) and Government of Ireland. This Intellectual Property is Crown Copyright and is reproduced with the permission of Land & Property Services under Delegated Authority from the Controller of Her Majesty's Stationery Office, © Crown Copyright and database rights. Licence Number 2509. Contains public sector information licensed under the Open Government Licence v3.0. Contains information from the European Union Copernicus Project. © Copernicus 2022. © Ordnance Survey Northern Ireland 2022.



Viewpoint Location Plan Baseline Panorama (90 Degree View)
Scale: 1:200,000



Viewpoint Location Plan (53.5 Degree View)
Scale: 1:50,000

P:\2021\211591_OwenVIA\GIS\211591_OWEN\ES\211591_OWEN_ES_Fig6-26_to_Fig6-50_VP_Plans.mxd

open

optimised environments

PART OF SLR

Orsted

ERM

90 Degree Field of View

53.5 Degree Field of View

No. of Blade Tips Theoretically Visible

1 - 4

5 - 8

9 - 12

13 - 14

Proposed Wind Turbine

10km Radii

30km Study Area

NI/RoI Boundary Line

DONEGAL

FERMANAGH

LONDONDERRY

TYRONE

Cumulative Wind Farm Status:

Operational

Under Construction

Consented

Appeal; Application

1:50,000 Scale @ A3

0 0.5 1 2 Km

NORTH

Produced By: RH

Ref:

Checked By: JP

Date: 22/03/2023

Viewpoint Plan

Figure 6.26a

VP1 - Koram Road, Lifford

Owenreagh / Craignagapple

Wind Farm

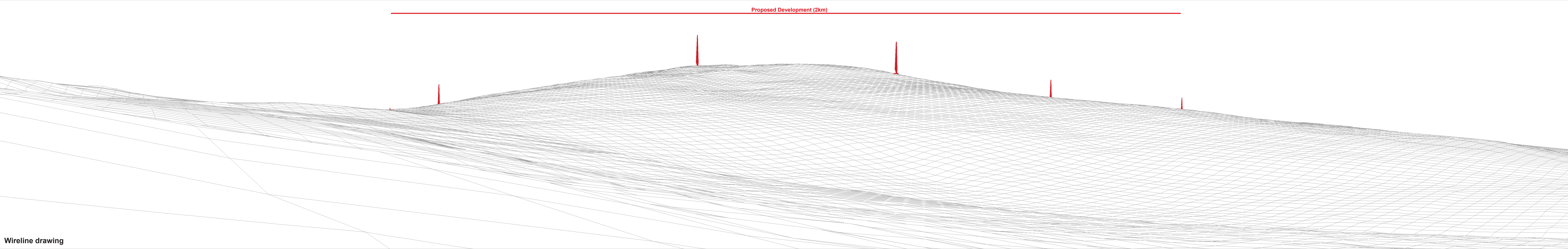
Environmental Statement



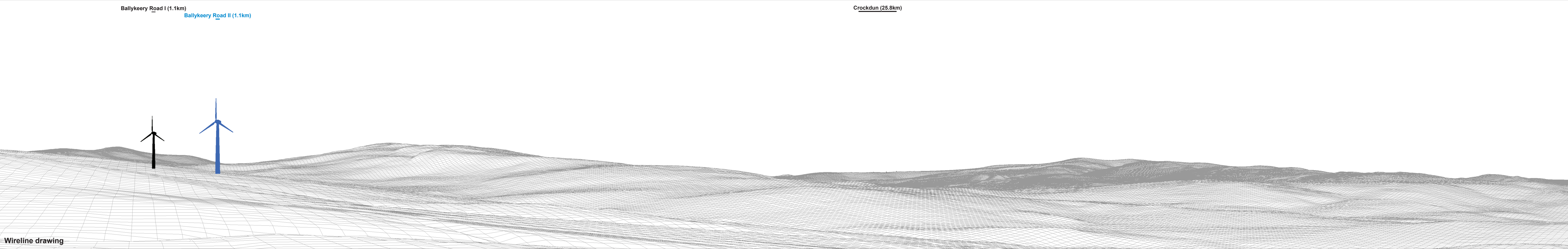
Baseline photograph

This image provides landscape and visual context only

Proposed Development (2km)



Wireline drawing





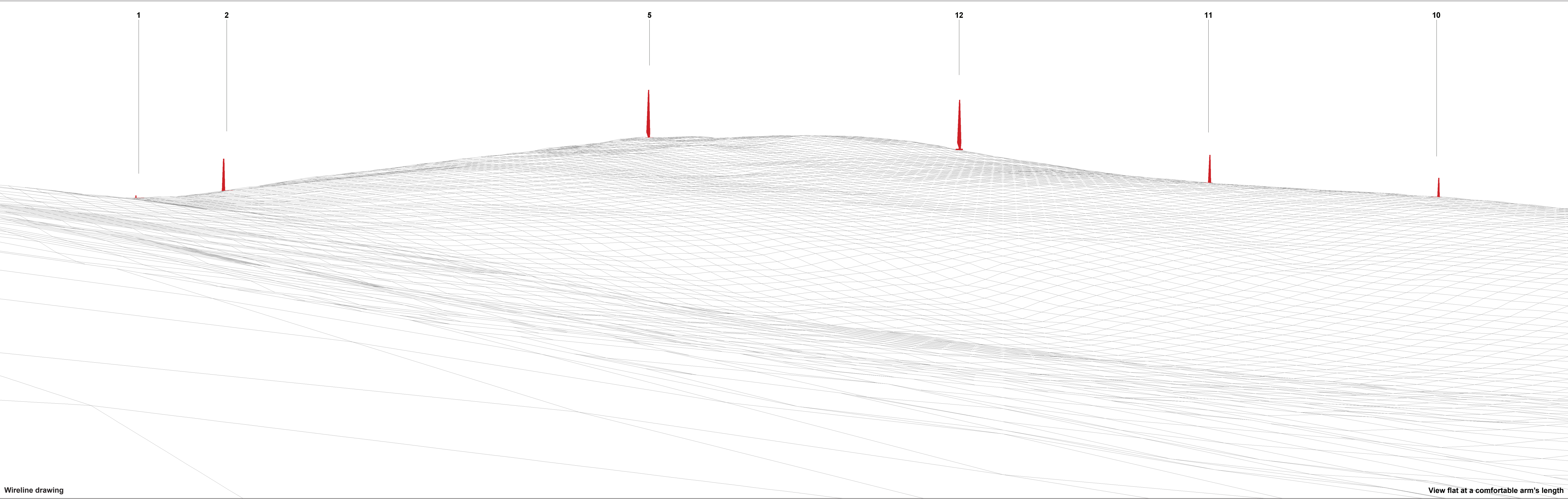
Baseline photograph

This image provides landscape and visual context only



Wireline drawing

OS reference:	241107 E 394617 N	Horizontal field of view:	90° (cylindrical projection)	Camera:	Canon EOS 6D Mark II	Figure 6.26d
Eye level:	243.1 mAOD	Principal distance:	522 mm	Lens:	EF50mm f/1.4 USM	Viewpoint 1: Koram Road, Ligfordrum
Direction of view:	217°	Paper size:	841 x 297 mm (half A1)	Camera height:	1.5 m	Owenreagh/Craignagapple Wind Farm
Nearest turbine:	1.98 km	Correct printed image size:	820 x 130 mm	Date and time:	01/07/2021 16:42	Contains information from the European Union Copernicus Project. ©Copernicus 2023 ©Ordnance Survey Northern Ireland 2023, licensed under the Open Government Licence v3.0.

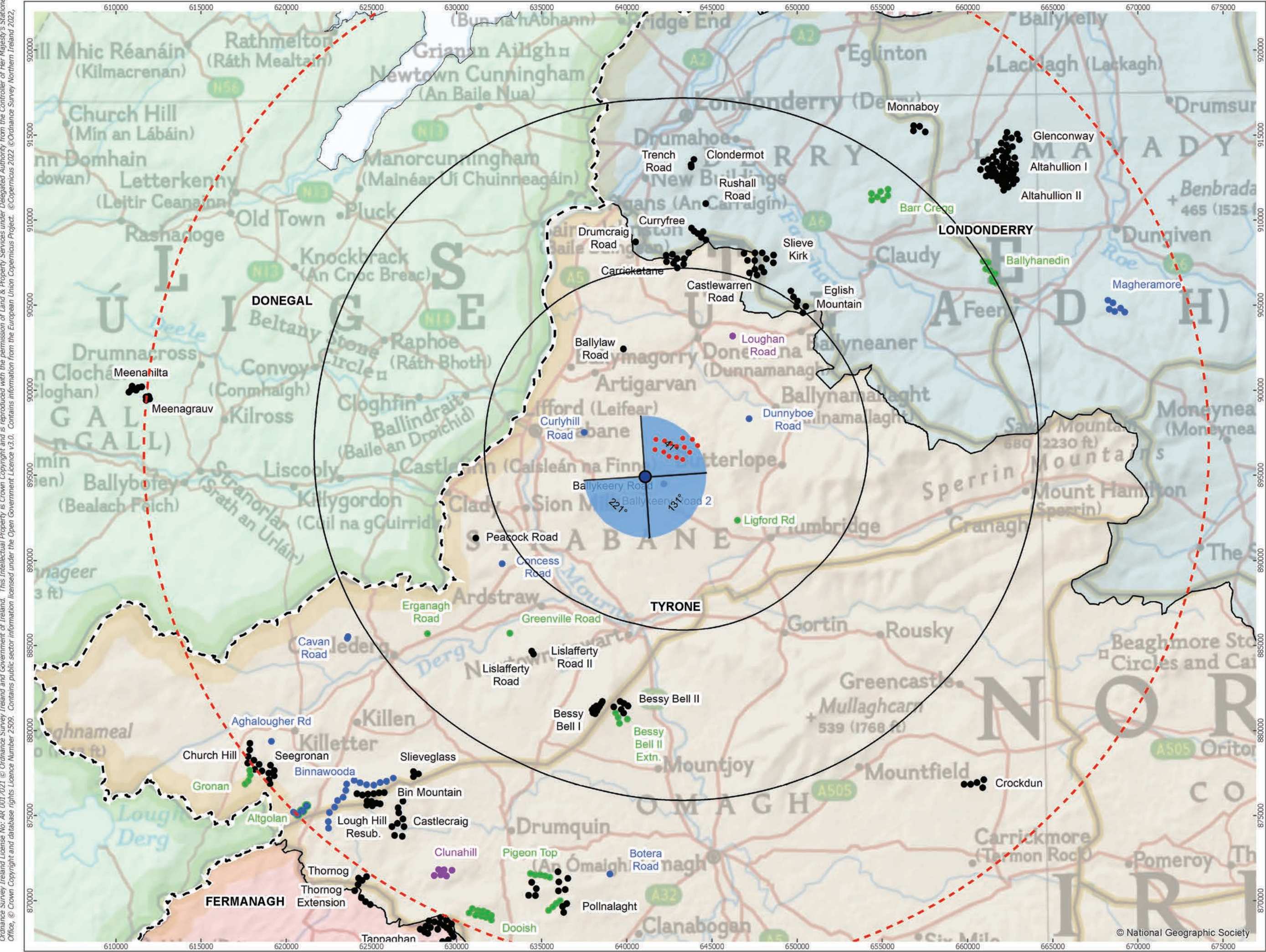




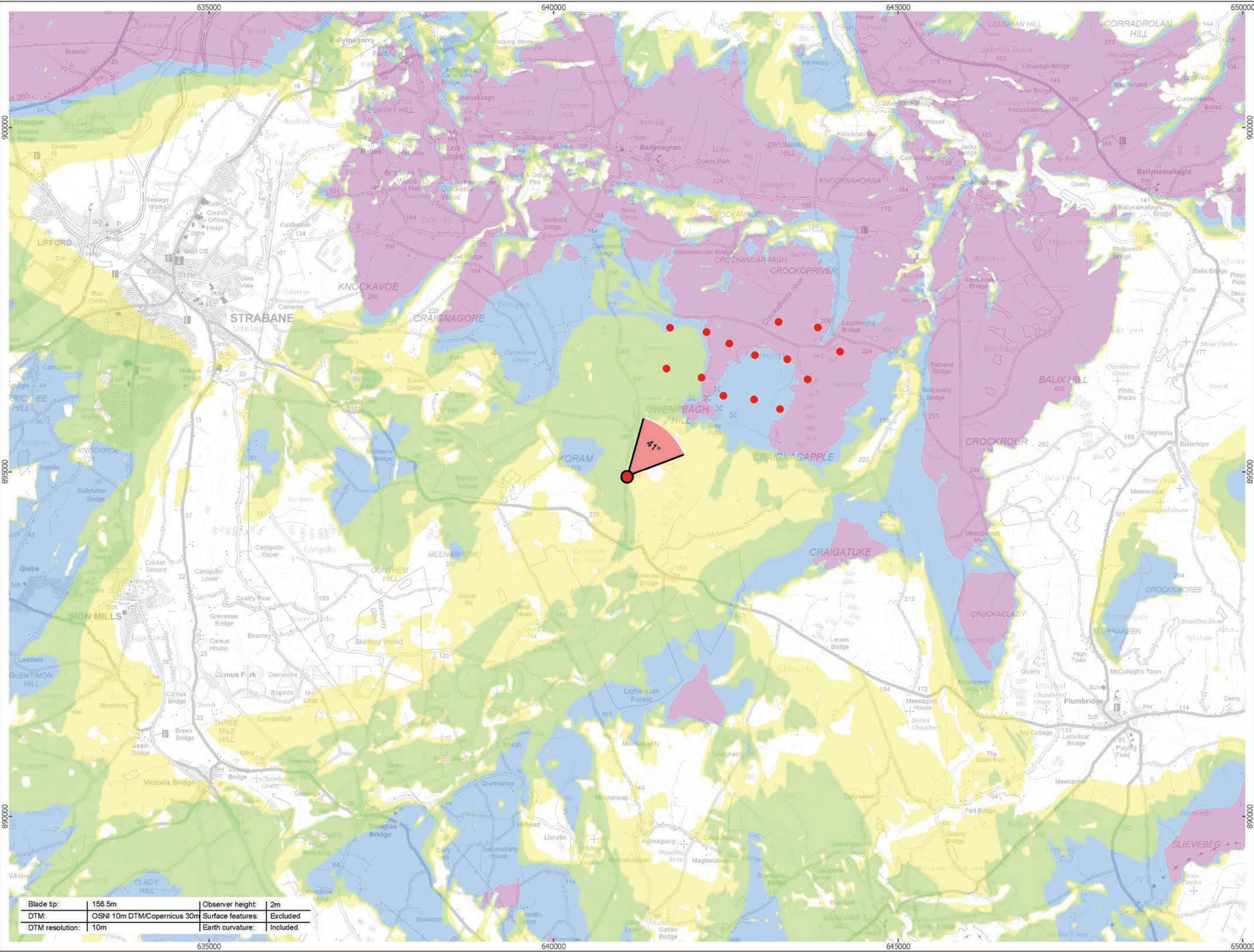
Photomontage: Proposed Development

View flat at a comfortable arm's length

OS reference:	241107 E 394617 N	Horizontal field of view:	53.5° (planar projection)	Camera:	Canon EOS 6D Mark II	Figure 6.26f
Eye level:	243.1 mAOD	Principal distance:	812.5 mm	Lens:	EF50mm f/1.4 USM	Viewpoint 1: Koram Road, Ligfordrum
Direction of view:	37°	Paper size:	841 x 297 mm (half A1)	Camera height:	1.5 m	Owenreagh/Craignagapple Wind Farm
Nearest turbine:	1.98 km	Correct printed image size:	820 x 260 mm	Date and time:	01/07/2021 16:42	Contains information from the European Union Copernicus Project. ©Copernicus 2023 ©Ordnance Survey Northern Ireland 2023, licensed under the Open Government Licence v3.0.



Viewpoint Location Plan Baseline Panorama (90 Degree View)
Scale: 1:200,000



Viewpoint Location Plan (53.5 Degree View)
Scale: 1:50,000

open

optimised environments

PART OF SLR

Orsted

ERM

90 Degree Field of View

53.5 Degree Field of View

No. of Blade Tips Theoretically Visible

1 - 4

5 - 8

9 - 12

13 - 14

Proposed Wind Turbine

10km Radii

30km Study Area

NI/RoI Boundary Line

DONEGAL

FERMANAGH

LONDONDERRY

TYRONE

Cumulative Wind Farm Status:

Operational

Under Construction

Consented

Appeal; Application

1:50,000

Scale @ A3

0 0.5 1 2 Km

NORTH

Produced By: RH

Ref:

Checked By: JP

Date: 22/03/2023

Viewpoint Plan

Figure 6.27a

VP2 - Koram Road, Ligfordrum 2

Owenreagh / Craignagapple

Wind Farm

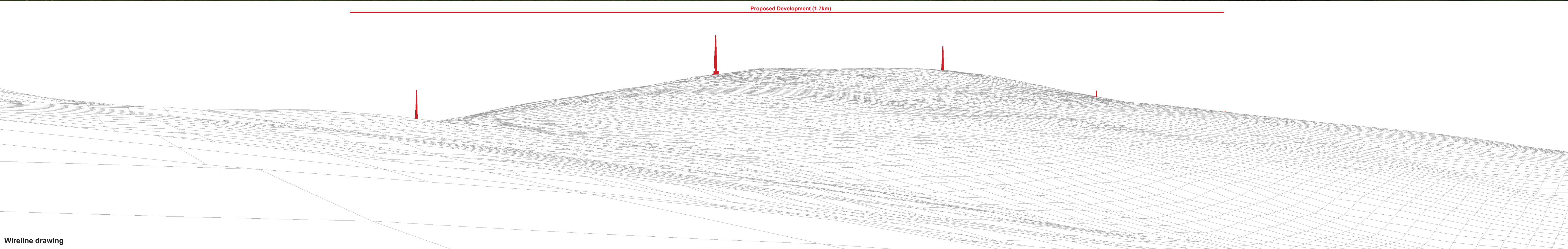
Environmental Statement

P:\2021\211591_OwenVIA\GIS\211591_OWEN\ES\211591_OWEN_ES_Fig6-26_to_Fig6-50_VP_Plans.mxd



Baseline photograph

This image provides landscape and visual context only



Wireline drawing



Baseline photograph

This image provides landscape and visual context only

Ballykeery Road I (1.1km)

Ballykeery Road II (1.2km)

Crockdun (26km)



Wireline drawing

OS reference:	241125 E 394944 N	Horizontal field of view:	90° (cylindrical projection)	Camera:	Canon EOS 6D Mark II
Eye level:	265.3 mAOD	Principal distance:	522 mm	Lens:	EF50mm f/1.4 USM
Direction of view:	131°	Paper size:	841 x 297 mm (half A1)	Camera height:	1.5 m
Nearest turbine:	1.67 km	Correct printed image size:	820 x 130 mm	Date and time:	01/07/2021 13:28

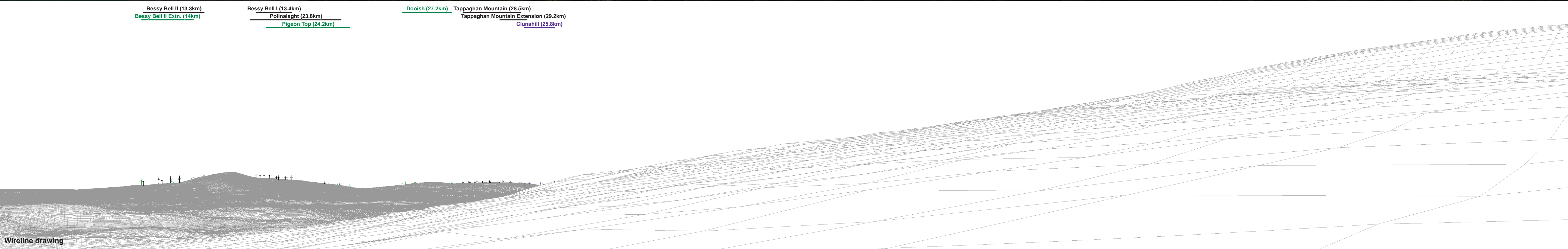
Figure 6.27c
Viewpoint 2: Koram Road, Ligfordrum 2

Owenreagh/Craignagapple Wind Farm



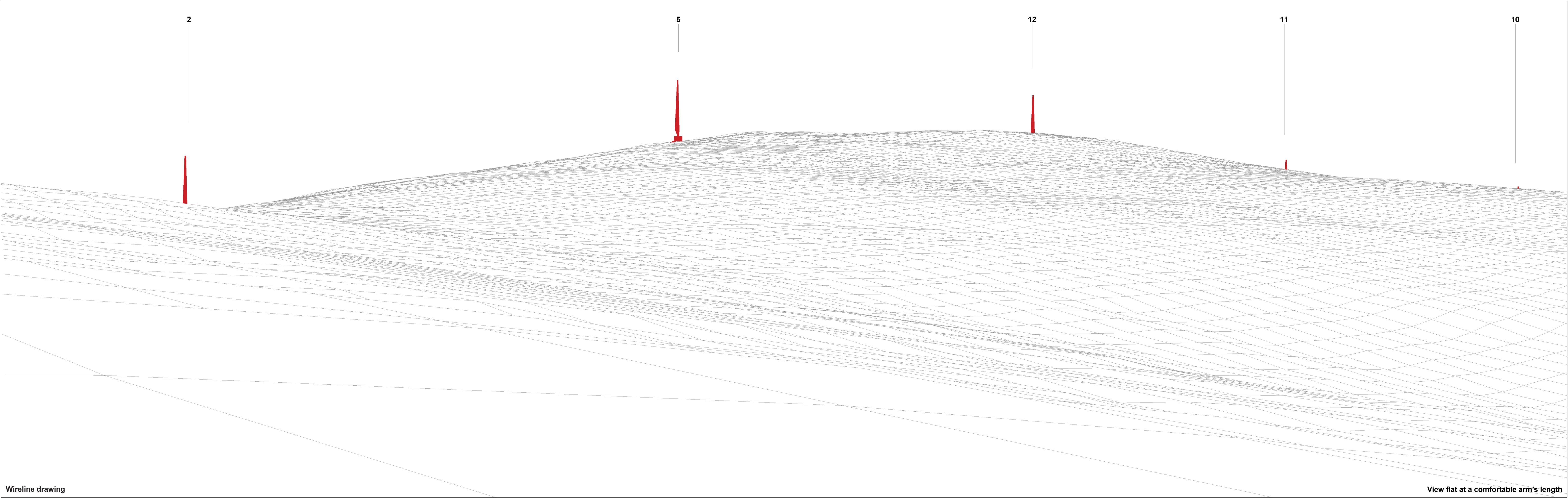
Baseline photograph

This image provides landscape and visual context only



Wireline drawing

OS reference:	241125 E 394944 N	Horizontal field of view:	90° (cylindrical projection)	Camera:	Canon EOS 6D Mark II	Figure 6.27d
Eye level:	265.3 mAOD	Principal distance:	522 mm	Lens:	EF50mm f/1.4 USM	Viewpoint 2: Koram Road, Ligfordrum 2
Direction of view:	221°	Paper size:	841 x 297 mm (half A1)	Camera height:	1.5 m	Owenreagh/Craignagapple Wind Farm
Nearest turbine:	1.67 km	Correct printed image size:	820 x 130 mm	Date and time:	01/07/2021 13:28	Contains information from the European Union Copernicus Project. ©Copernicus 2023 ©Ordnance Survey Northern Ireland 2023, licensed under the Open Government Licence v3.0.



Wireline drawing

View flat at a comfortable arm's length

OS reference:	241125 E 394944 N	Horizontal field of view:	53.5° (planar projection)	Camera:	Canon EOS 6D Mark II
Eye level:	265.3 mAOD	Principal distance:	812.5 mm	Lens:	EF50mm f/1.4 USM
Direction of view:	41°	Paper size:	841 x 297 mm (half A1)	Camera height:	1.5 m
Nearest turbine:	1.67 km	Correct printed image size:	820 x 260 mm	Date and time:	01/07/2021 13:28

Figure 6.27e
Viewpoint 2: Koram Road, Ligfordrum 2

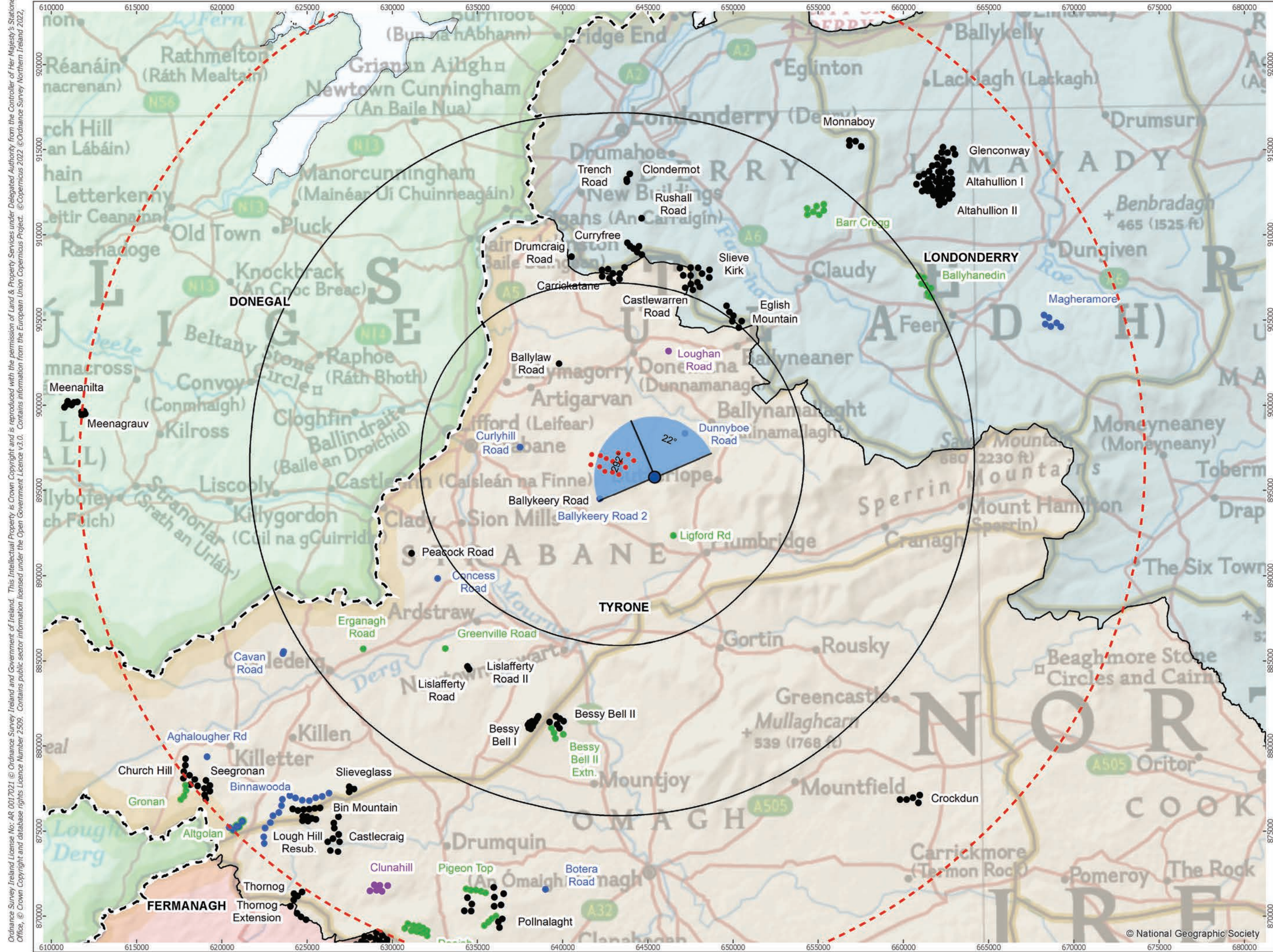
Owenreagh/Craignagapple Wind Farm



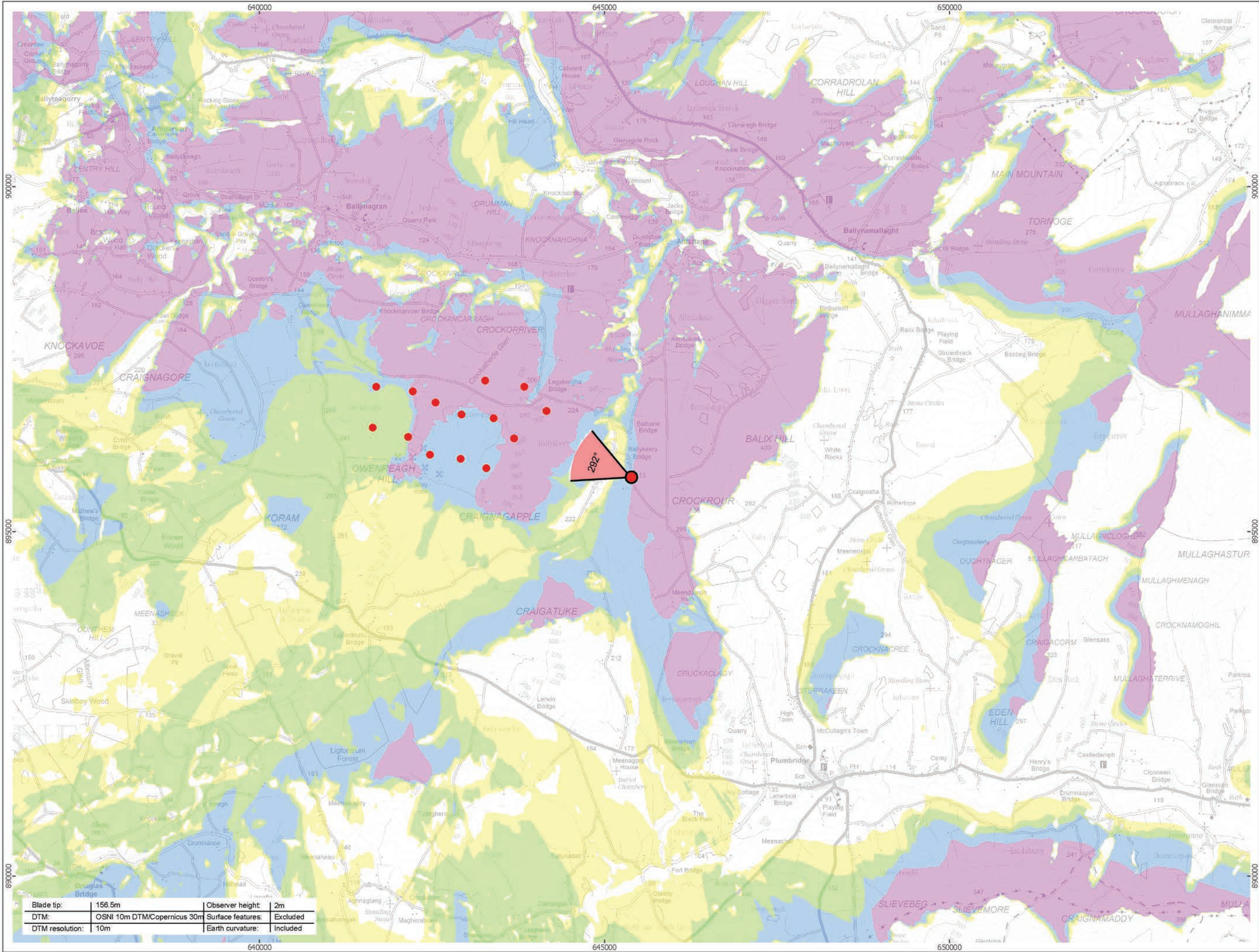
Photomontage: Proposed Development

View flat at a comfortable arm's length

OS reference:	241125 E 394944 N	Horizontal field of view:	53.5° (planar projection)	Camera:	Canon EOS 6D Mark II	Figure 6.27f
Eye level:	265.3 mAOD	Principal distance:	812.5 mm	Lens:	EF50mm f/1.4 USM	Viewpoint 2: Koram Road, Ligfordrum 2
Direction of view:	41°	Paper size:	841 x 297 mm (half A1)	Camera height:	1.5 m	Owenreagh/Craignagapple Wind Farm
Nearest turbine:	1.67 km	Correct printed image size:	820 x 260 mm	Date and time:	01/07/2021 13:28	Contains information from the European Union Copernicus Project. ©Copernicus 2023 ©Ordnance Survey Northern Ireland 2023, licensed under the Open Government Licence v3.0.



Viewpoint Location Plan Baseline Panorama (90 Degree View)
Scale: 1:200,000



Viewpoint Location Plan (53.5 Degree View)
Scale: 1:50,000

P:\2021\211591_Owen\IA\GIS\211591_OWEN\ES\211591_OWEN_ES_Fig6-26_to_Fig6-50_VP_Plans.mxd

optimised environments
PART OF SLR

ERM

90 Degree Field of View

53.5 Degree Field of View

No. of Blade Tips Theoretically Visible

1 - 4

5 - 8

9 - 12

13 - 14

Proposed Wind Turbine

10km Radii

30km Study Area

NI/RoI Boundary Line

DONEGAL

FERMANAGH

LONDONDERRY

TYRONE

Cumulative Wind Farm Status:

Operational

Under Construction

Consented

Appeal; Application

1:50,000 Scale @ A3

0 0.5 1 2 Km

Produced By: RH

Ref:

Checked By: JP

Date: 22/03/2023

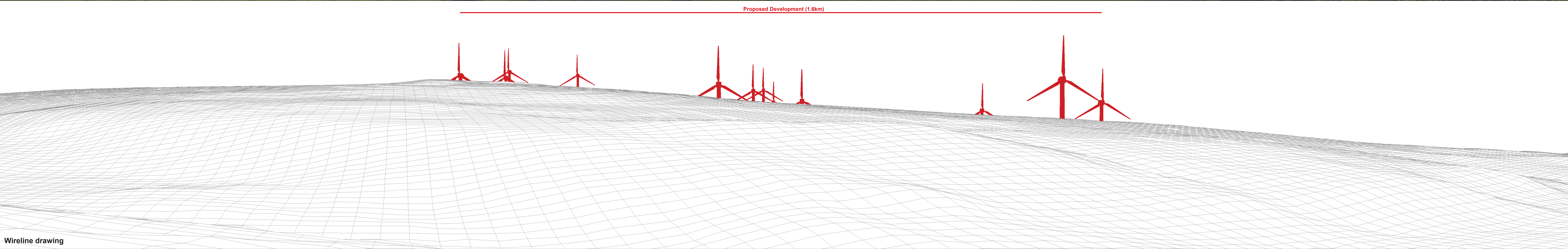
Viewpoint Plan
Figure 6.28a
VP3 - Napple Road, Ballykeery Bridge

Owenreagh / Craignagapple
Wind Farm
Environmental Statement



Baseline photograph

This image provides landscape and visual context only



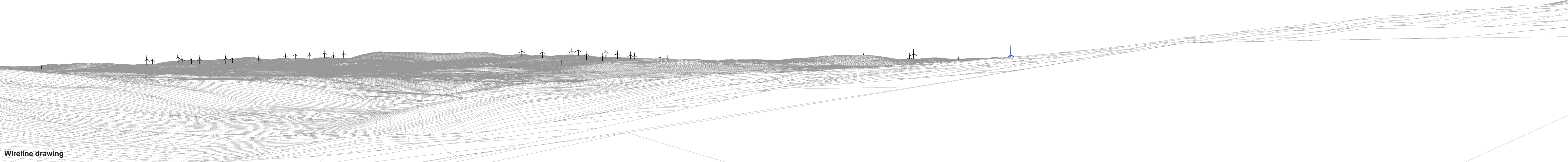
Wireline drawing



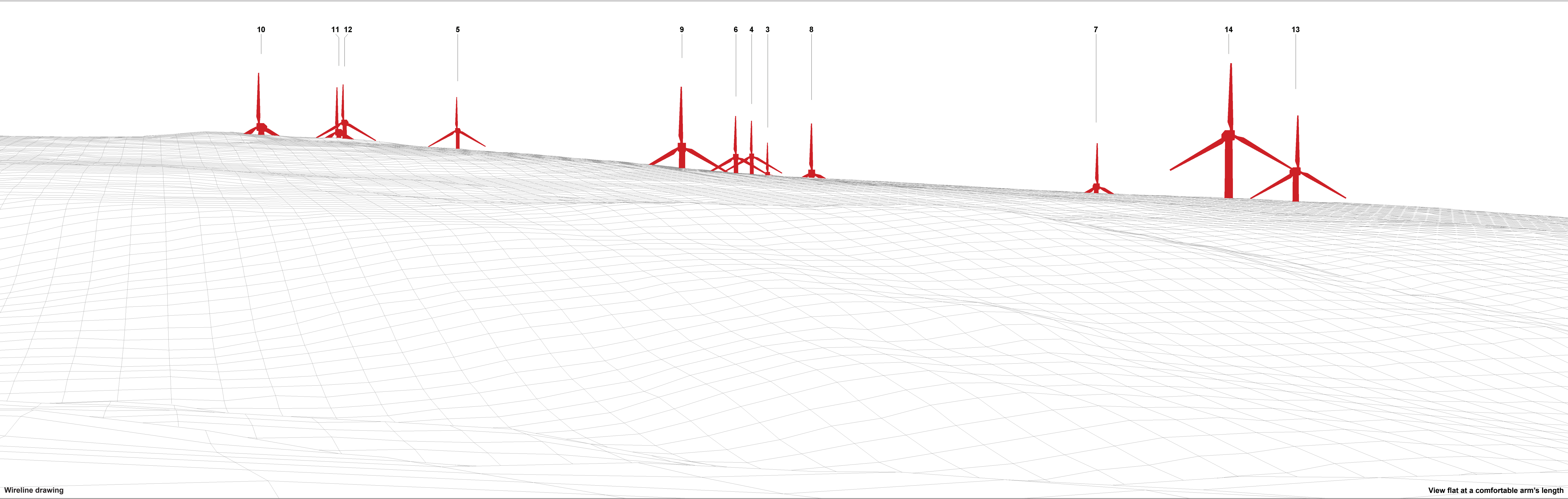
Baseline photograph

This image provides landscape and visual context only

Drumcraig Road (19) (13.8km) Carrickatane (11.7km) Curryfree (13.1km) Slieve Kirk (11.2km) Castlewarren Road (11.3km) Eglish Mountain (10.1km) Monnaboy (22.6km) Barr Cregg (17.8km) Dunnyboe Road (3.1km)



Wireline drawing



Wireline drawing

View flat at a comfortable arm's length

OS reference:	245447 E 395797 N	Horizontal field of view:	53.5° (planar projection)	Camera:	Canon EOS 6D Mark II
Eye level:	214.2 mAOD	Principal distance:	812.5 mm	Lens:	EF50mm f/1.4 USM
Direction of view:	292°	Paper size:	841 x 297 mm (half A1)	Camera height:	1.5 m
Nearest turbine:	1.56 km	Correct printed image size:	820 x 260 mm	Date and time:	01/07/2021 15:40

Figure 6.28d
Viewpoint 3: Napple Road, Ballykeery Bridge

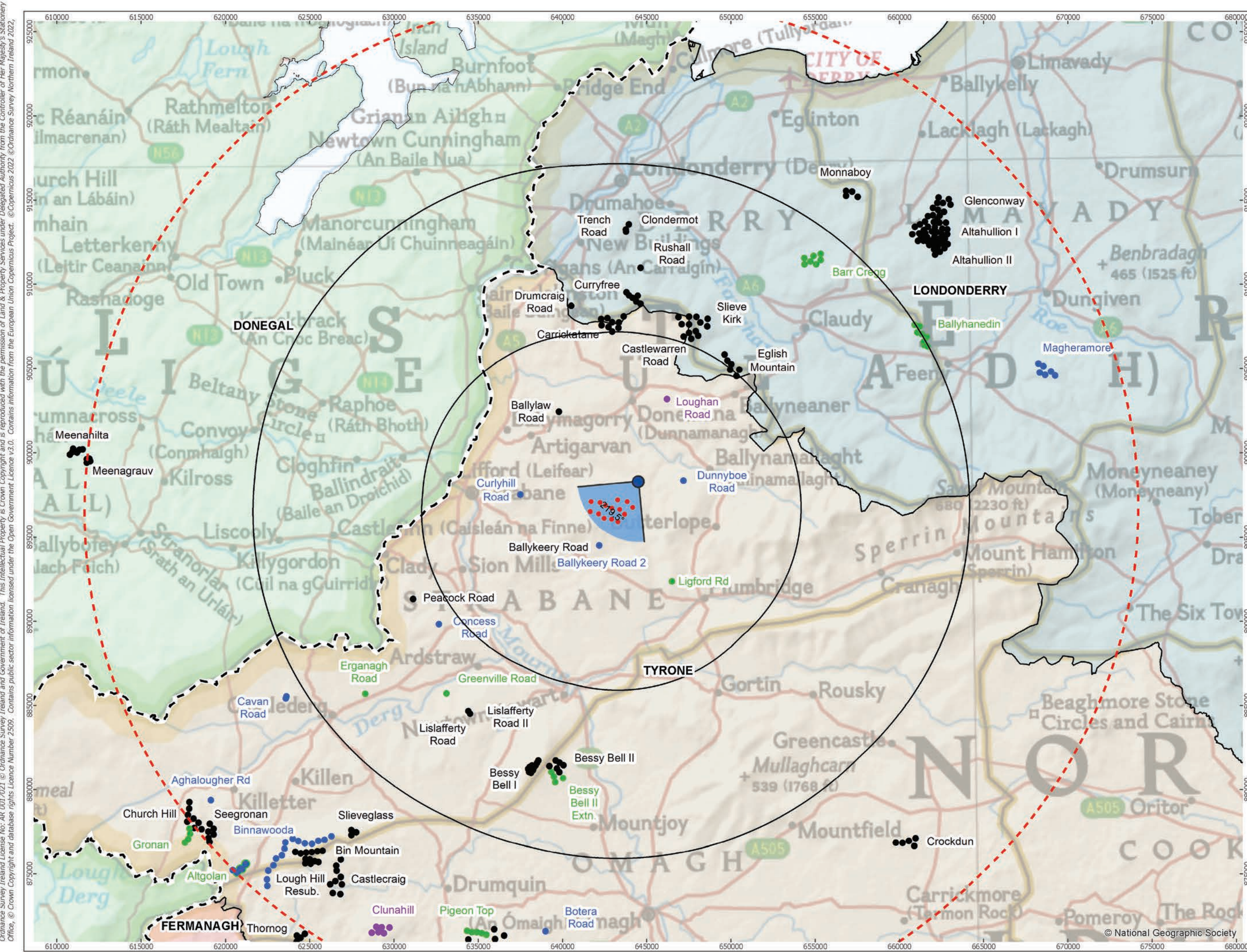
Owenreagh/Craignagapple Wind Farm



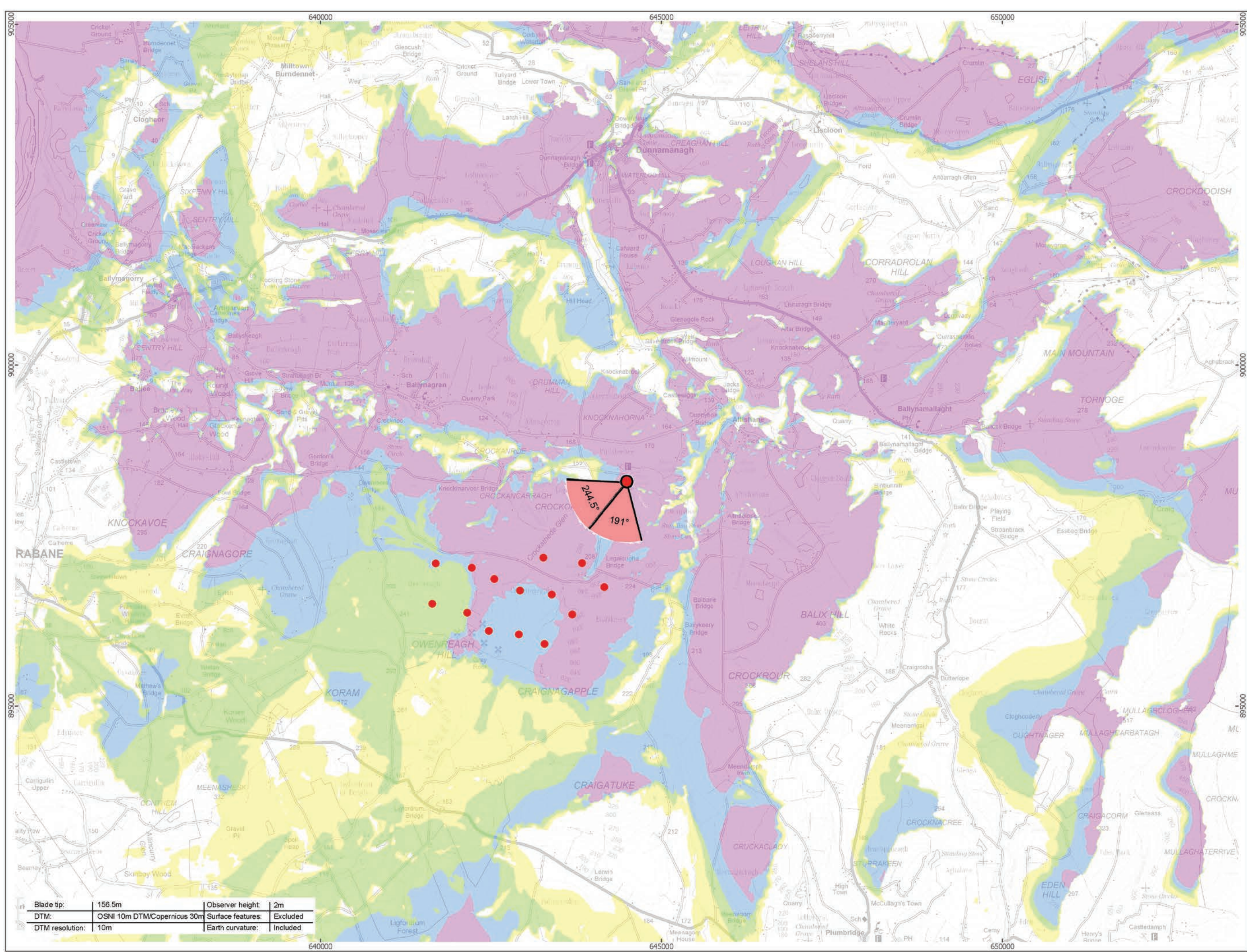
Photomontage: Proposed Development

View flat at a comfortable arm's length

OS reference:	245447 E 395797 N	Horizontal field of view:	53.5° (planar projection)	Camera:	Canon EOS 6D Mark II	Figure 6.28e
Eye level:	214.2 mAOD	Principal distance:	812.5 mm	Lens:	EF50mm f/1.4 USM	Viewpoint 3: Napple Road, Ballykeery Bridge
Direction of view:	292°	Paper size:	841 x 297 mm (half A1)	Camera height:	1.5 m	Owenreagh/Craignagapple Wind Farm
Nearest turbine:	1.56 km	Correct printed image size:	820 x 260 mm	Date and time:	01/07/2021 15:40	



Viewpoint Location Plan Baseline Panorama (90 Degree View)
Scale: 1:200,000



Viewpoint Location Plan (53.5 Degree View)
Scale: 1:50,000

open

optimised environments

PART OF SLR

Orsted

ERM

90 Degree Field of View

53.5 Degree Field of View

No. of Blade Tips Theoretically Visible

1 - 4

5 - 8

9 - 12

13 - 14

Proposed Wind Turbine

10km Radii

30km Study Area

NI/RoI Boundary Line

DONEGAL

FERMANAGH

LONDONDERRY

TYRONE

Cumulative Wind Farm Status:

Operational

Under Construction

Consented

Appeal; Application

1:50,000

Scale @ A3

0 0.5 1 2 Km

NORTH

Produced By: RH

Ref:

Checked By: JP

Date: 22/03/2023

Viewpoint Plan

Figure 6.29a

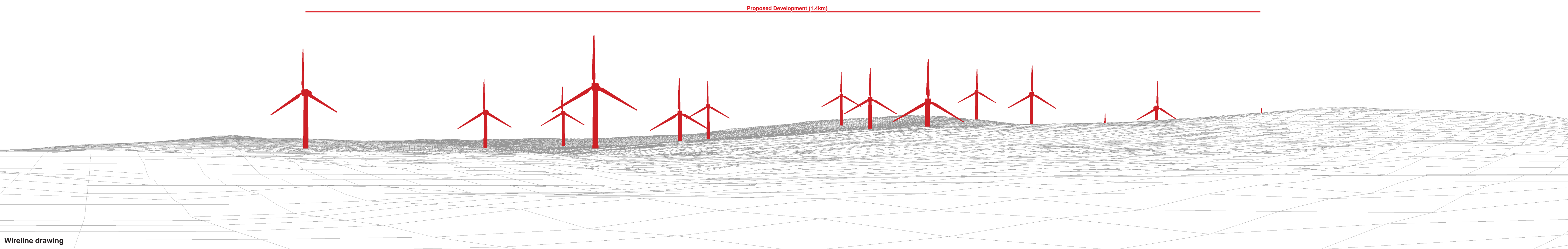
VP4 - Moor Lough Picnic Area

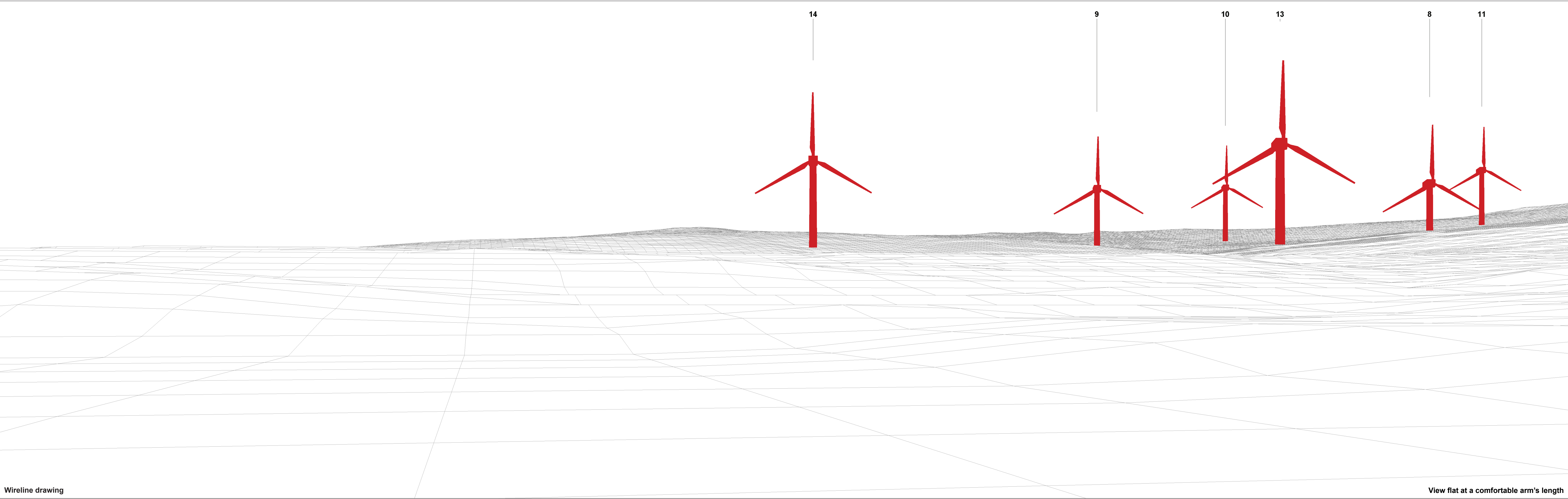
Owenreagh / Craignagapple

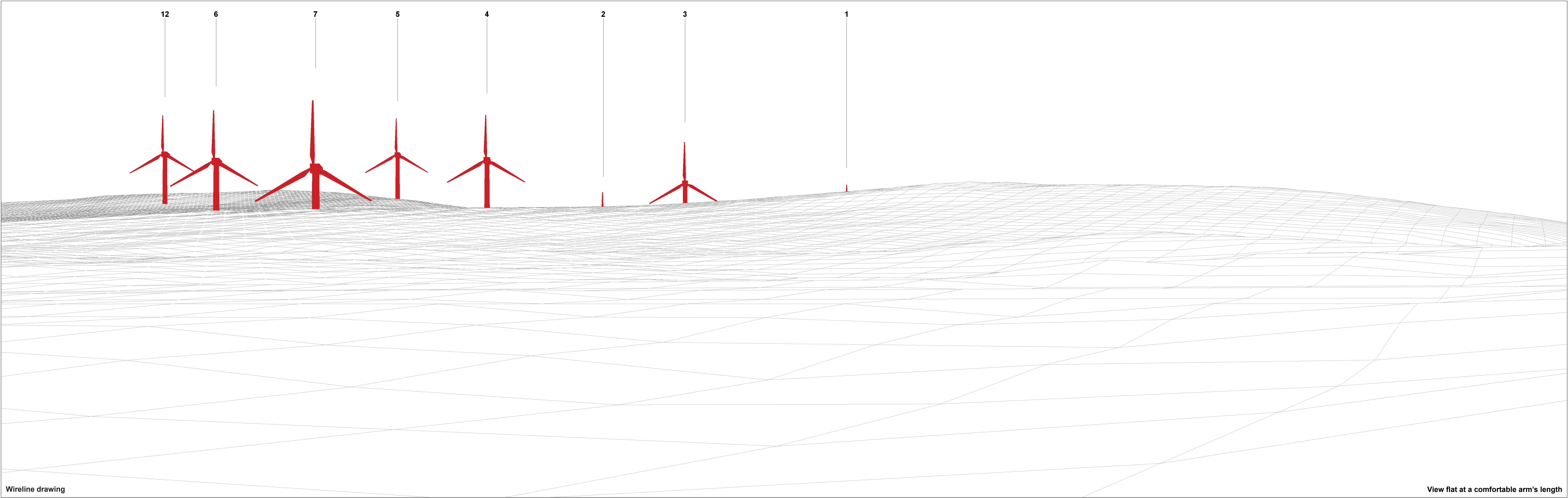
Wind Farm

Environmental Statement

P:\2021\211591_Owen\Map\GIS\211591_OWEN\ES\211591_OWEN_ES_Fig6-26_to_Fig6-50_VP_Plans.mxd







Wireline drawing

View flat at a comfortable arm's length



Photomontage: Proposed Development

View flat at a comfortable arm's length

OS reference:	244549 E 398304 N	Horizontal field of view:	53.5° (planar projection)	Camera:	Canon EOS 6D Mark II
Eye level:	176.8 mAOD	Principal distance:	812.5 mm	Lens:	EF50mm f/1.4 USM
Direction of view:	244.5°	Paper size:	841 x 297 mm (half A1)	Camera height:	1.5 m
Nearest turbine:	1.36 km	Correct printed image size:	820 x 260 mm	Date and time:	01/07/2021 14:53

Figure 6.29f
Viewpoint 4: Moor Lough Picnic Area
Owenreagh/Craignagapple Wind Farm



Photomontage: Proposed Development Lighting Assesment : 200cd lighting intensity

View flat at a comfortable arm's length

OS reference:	244549 E 398304 N	Horizontal field of view:	53.5° (planar projection)	Camera:	Canon EOS 6D Mark II	Figure 6.29f
Eye level:	176.8 mAOD	Principal distance:	812.5 mm	Lens:	EF50mm f/1.4 USM	Viewpoint 4: Moor Lough Picnic Area
Direction of view:	191°	Paper size:	841 x 297 mm (half A1)	Camera height:	1.5 m	Owenreagh/Craignagapple Wind Farm
Nearest turbine:	1.36 km	Correct printed image size:	820 x 260 mm	Date and time:	01/07/2021 14:53	Contains information from the European Union Copernicus Project. ©Copernicus 2023 ©Ordnance Survey Northern Ireland 2023, licensed under the Open Government Licence v3.0.



Photomontage: Proposed Development Lighting Assesment : 200cd lighting intensity

View flat at a comfortable arm's length

OS reference:	244549 E 398304 N	Horizontal field of view:	53.5° (planar projection)	Camera:	Canon EOS 6D Mark II	Figure 6.29g
Eye level:	176.8 mAOD	Principal distance:	812.5 mm	Lens:	EF50mm f/1.4 USM	Viewpoint 4: Moor Lough Picnic Area
Direction of view:	244.5°	Paper size:	841 x 297 mm (half A1)	Camera height:	1.5 m	Owenreagh/Craignagapple Wind Farm
Nearest turbine:	1.36 km	Correct printed image size:	820 x 260 mm	Date and time:	01/07/2021 14:53	Contains information from the European Union Copernicus Project. ©Copernicus 2023 ©Ordnance Survey Northern Ireland 2023, licensed under the Open Government Licence v3.0.



Photomontage: Proposed Development Lighting Assesment : 2000cd lighting intensity

View flat at a comfortable arm's length

OS reference:	244549 E 398304 N	Horizontal field of view:	53.5° (planar projection)	Camera:	Canon EOS 6D Mark II	Figure 6.29h
Eye level:	176.8 mAOD	Principal distance:	812.5 mm	Lens:	EF50mm f/1.4 USM	Viewpoint 4: Moor Lough Picnic Area
Direction of view:	191°	Paper size:	841 x 297 mm (half A1)	Camera height:	1.5 m	Owenreagh/Craignagapple Wind Farm
Nearest turbine:	1.36 km	Correct printed image size:	820 x 260 mm	Date and time:	01/07/2021 14:53	Contains information from the European Union Copernicus Project. ©Copernicus 2023 ©Ordnance Survey Northern Ireland 2023, licensed under the Open Government Licence v3.0.



Photomontage: Proposed Development Lighting Assesment : 2000cd lighting intensity

View flat at a comfortable arm's length

OS reference:	244549 E 398304 N	Horizontal field of view:	53.5° (planar projection)	Camera:	Canon EOS 6D Mark II	Figure 6.29i
Eye level:	176.8 mAOD	Principal distance:	812.5 mm	Lens:	EF50mm f/1.4 USM	Viewpoint 4: Moor Lough Picnic Area
Direction of view:	244.5°	Paper size:	841 x 297 mm (half A1)	Camera height:	1.5 m	Owenreagh/Craignagapple Wind Farm
Nearest turbine:	1.36 km	Correct printed image size:	820 x 260 mm	Date and time:	01/07/2021 14:53	Contains information from the European Union Copernicus Project. ©Copernicus 2023 ©Ordnance Survey Northern Ireland 2023, licensed under the Open Government Licence v3.0.