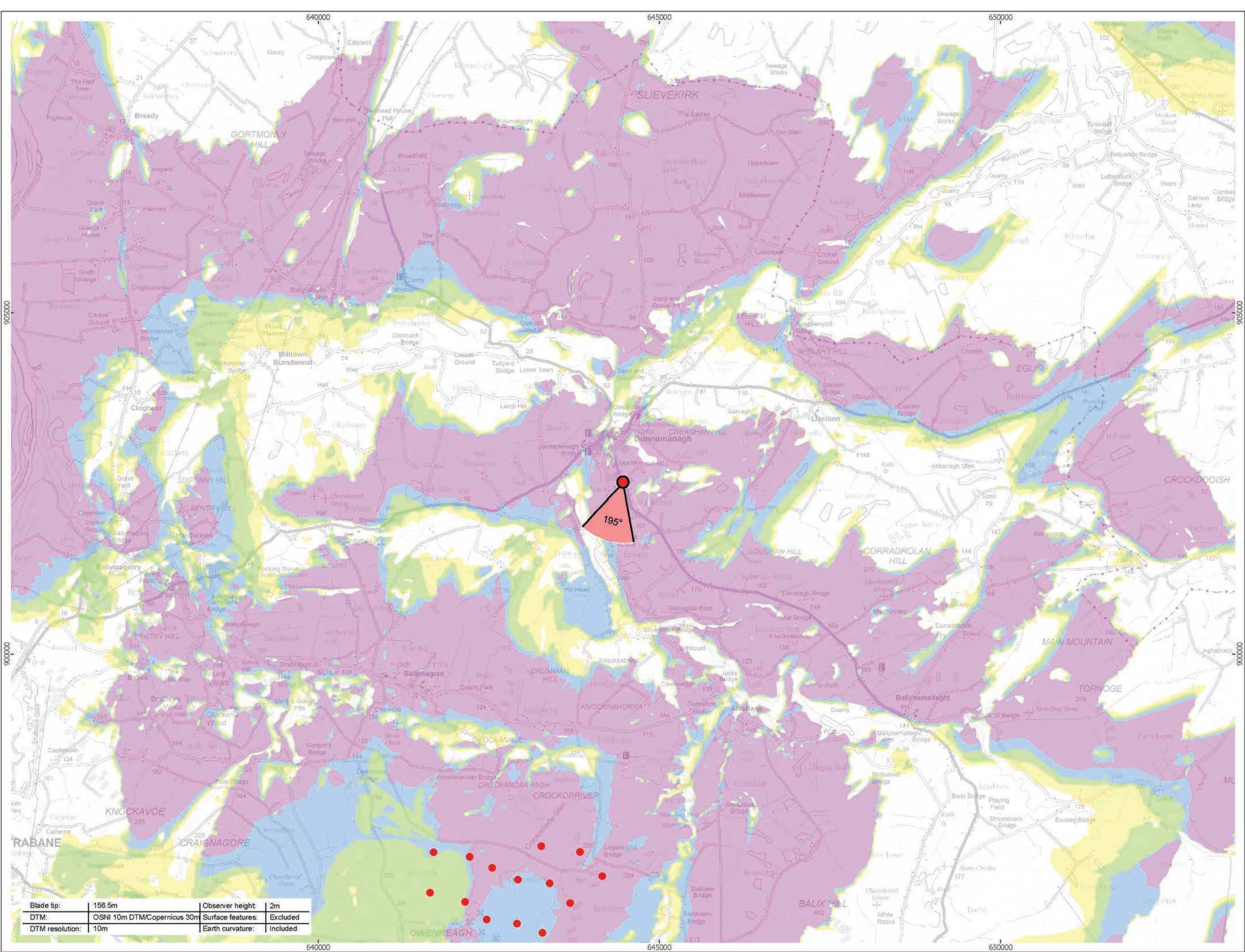


Viewpoint Location Plan Baseline Panorama (90 Degree View)
Scale: 1:200,000



Viewpoint Location Plan (53.5 Degree View)
Scale: 1:50,000

P:\2021\211591_Owen\LIA\GIS\211591_OWEN\ES\211591_OWEN_ES_Fig6-26_to_Fig6-50_VP_Plans.mxd

optimised environments
PART OF SLR

ERM

90 Degree Field of View

53.5 Degree Field of View

No. of Blade Tips Theoretically Visible

1 - 4

5 - 8

9 - 12

13 - 14

Proposed Wind Turbine

10km Radii

30km Study Area

NI/RoI Boundary Line

DONEGAL

LONDONDERRY

TYRONE

Cumulative Wind Farm Status:

Operational

Under Construction

Consented

Appeal; Application

1:50,000 Scale @ A3

0 0.5 1 2 Km

Produced By: RH Ref:

Checked By: JP Date: 22/03/2023

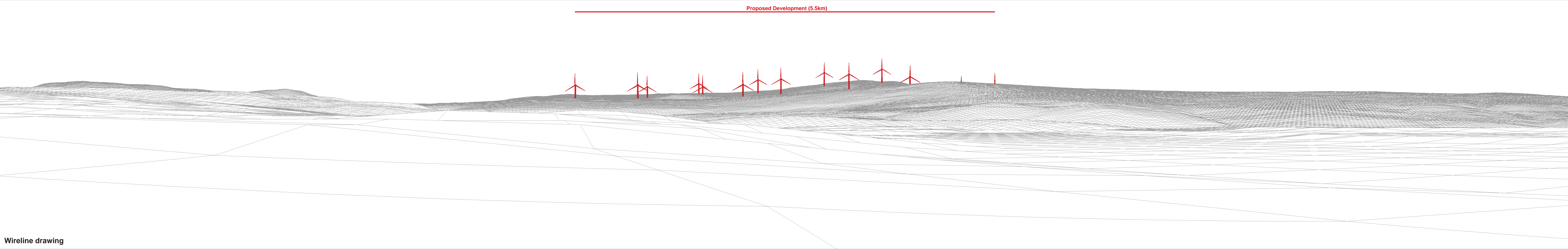
Viewpoint Plan
Figure 6.37a
VP12 - B48 Dunnamanagh

Owenreagh / Craignagapple
Wind Farm
Environmental Statement



Baseline photograph

This image provides landscape and visual context only



Wireline drawing

OS reference:	244523 E 402532 N	Horizontal field of view:	90° (cylindrical projection)	Camera:	Canon EOS 5D Mark II	Figure 6.37b
Eye level:	96.2 mAOD	Principal distance:	522 mm	Lens:	EF50mm f/1.4 USM	Viewpoint 12: B48 Dunnamanagh
Direction of view:	195°	Paper size:	841 x 297 mm (half A1)	Camera height:	1.5 m	Owenreagh/Craignagapple Wind Farm
Nearest turbine:	5.46 km	Correct printed image size:	820 x 130 mm	Date and time:	10/08/2022 09:14	<small>Contains information from the European Union Copernicus Project. ©Copernicus 2023 ©Ordnance Survey Northern Ireland 2023, licensed under the Open Government Licence v3.0.</small>

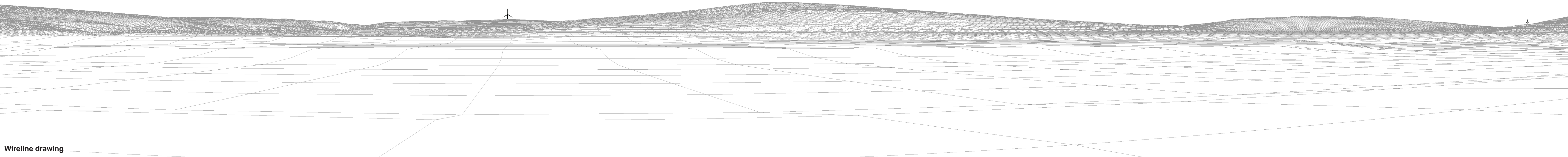


Baseline photograph

This image provides landscape and visual context only

Ballylaw Road (4.7km)

Drumcraig Road (19) (7.4km)



Wireline drawing

Figure 6.37c

Viewpoint 12: B48 Dunnamanagh

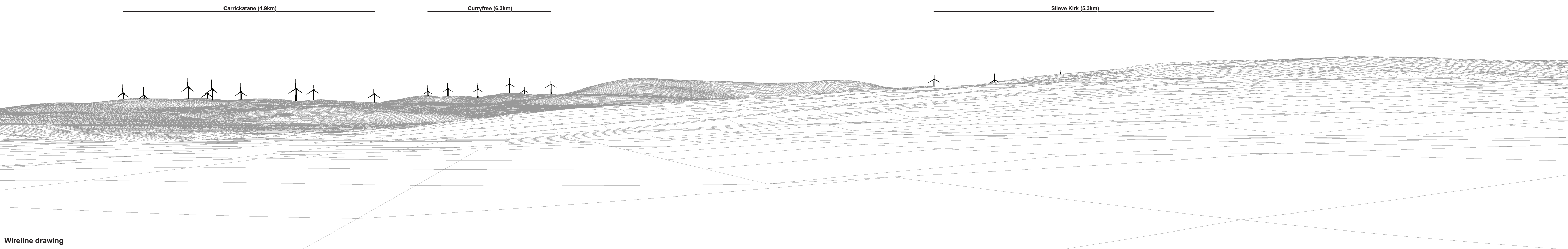
Owenreagh/Craignagapple Wind Farm

Contains information from the European Union Copernicus Project. ©Copernicus 2023 ©Ordnance Survey Northern Ireland 2023, licensed under the Open Government Licence v3.0.



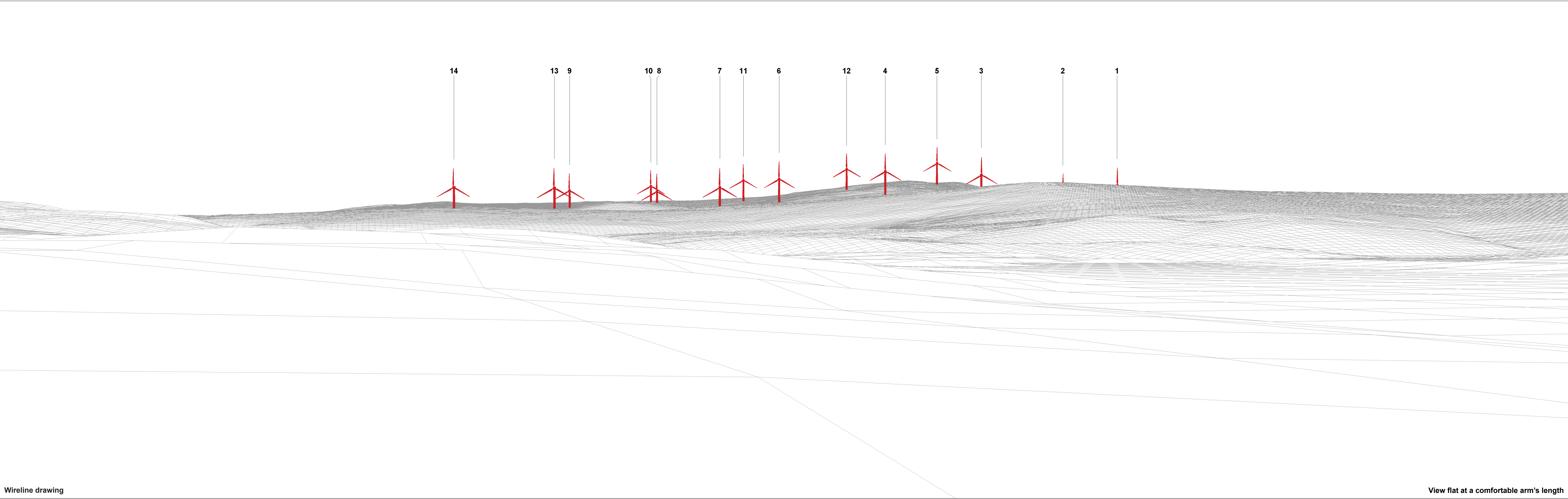
Baseline photograph

This image provides landscape and visual context only



Wireline drawing

OS reference:	244523 E 402532 N	Horizontal field of view:	90° (cylindrical projection)	Camera:	Canon EOS 5D Mark II	Figure 6.37d
Eye level:	96.2 mAOD	Principal distance:	522 mm	Lens:	EF50mm f/1.4 USM	Viewpoint 12: B48 Dunnamanagh
Direction of view:	15°	Paper size:	841 x 297 mm (half A1)	Camera height:	1.5 m	Owenreagh/Craignagapple Wind Farm
Nearest turbine:	5.46 km	Correct printed image size:	820 x 130 mm	Date and time:	10/08/2022 09:14	<small>Contains information from the European Union Copernicus Project. ©Copernicus 2023 ©Ordnance Survey Northern Ireland 2023, licensed under the Open Government Licence v3.0.</small>



Wireline drawing

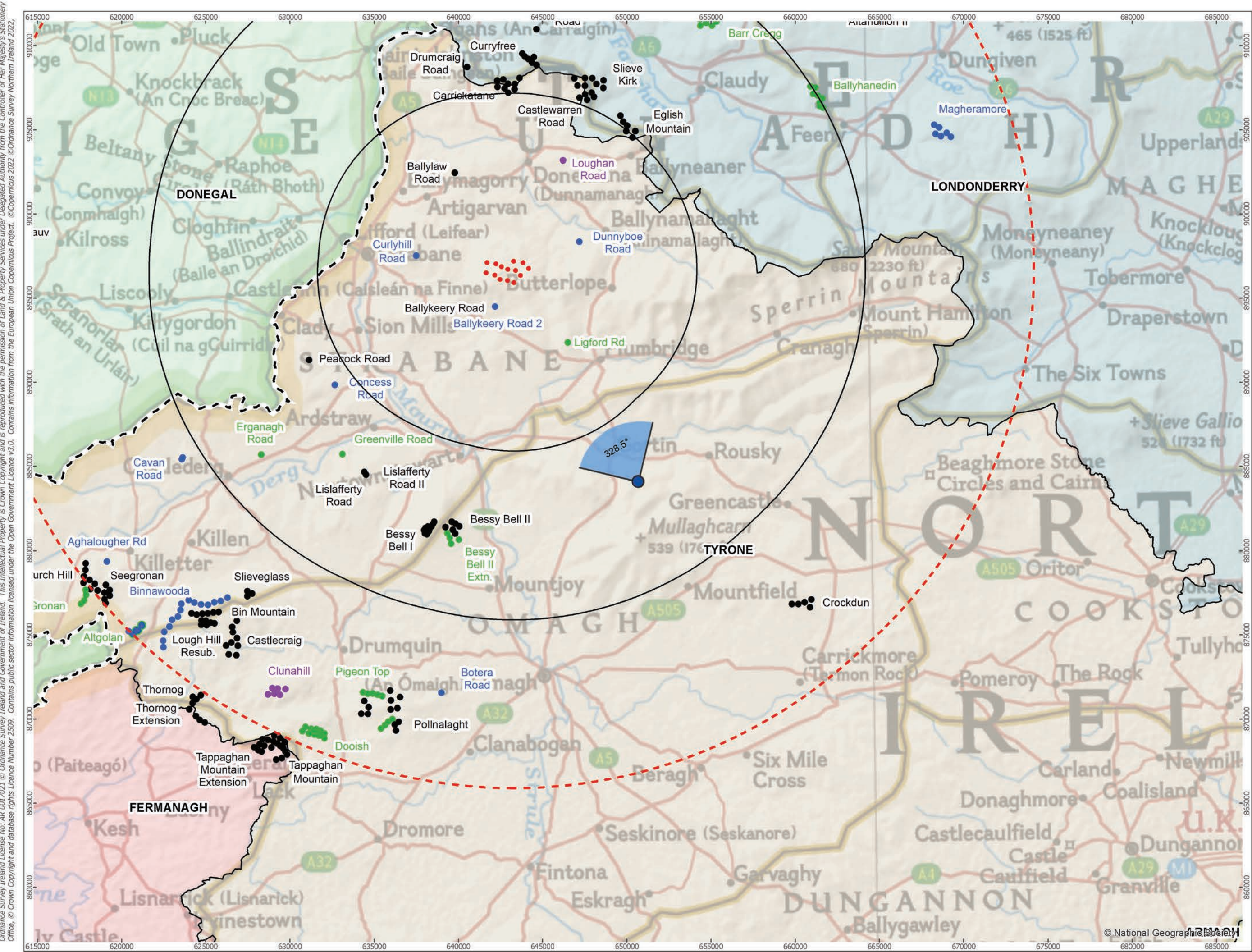
View flat at a comfortable arm's length



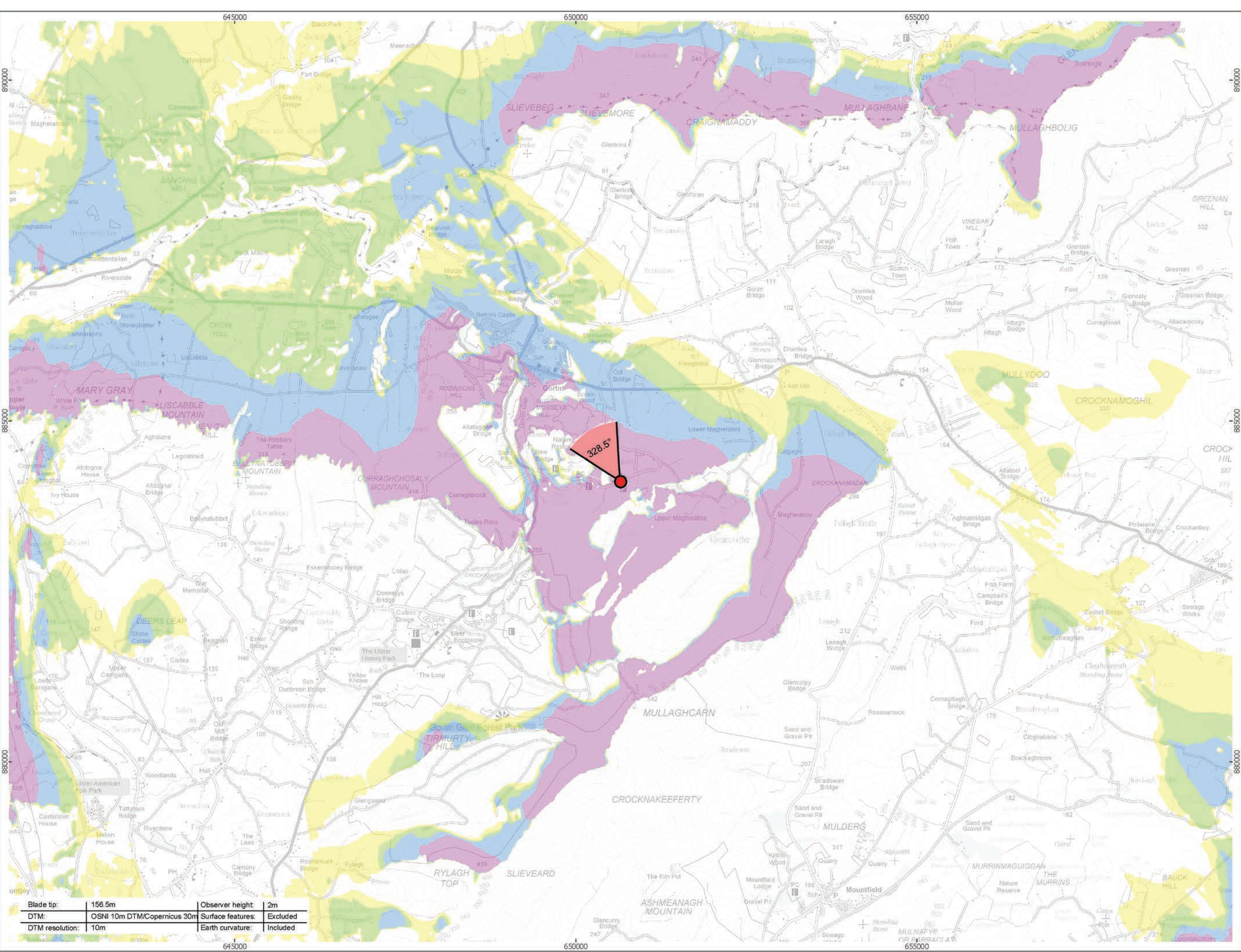
Photomontage: Proposed Development

View flat at a comfortable arm's length

OS reference:	244523 E 402532 N	Horizontal field of view:	53.5° (planar projection)	Camera:	Canon EOS 5D Mark II	Figure 6.37f
Eye level:	96.2 mAOD	Principal distance:	812.5 mm	Lens:	EF50mm f/1.4 USM	Viewpoint 12: B48 Dunnamanagh
Direction of view:	195°	Paper size:	841 x 297 mm (half A1)	Camera height:	1.5 m	Owenreagh/Craignagapple Wind Farm
Nearest turbine:	5.46 km	Correct printed image size:	820 x 260 mm	Date and time:	10/08/2022 09:14	Contains information from the European Union Copernicus Project. ©Copernicus 2023 ©Ordnance Survey Northern Ireland 2023, licensed under the Open Government Licence v3.0.



Viewpoint Location Plan Baseline Panorama (90 Degree View)
Scale: 1:200,000



Viewpoint Location Plan (53.5 Degree View)
Scale: 1:50,000

open

optimised environments

PART OF SLR

Orsted

ERM

90 Degree Field of View

53.5 Degree Field of View

No. of Blade Tips Theoretically Visible

1 - 4

5 - 8

9 - 12

13 - 14

Proposed Wind Turbine

10km Radii

30km Study Area

NI/RoI Boundary Line

DONEGAL

ARMAGH

FERMANAGH

LONDONDERRY

TYRONE

Cumulative Wind Farm Status:

Operational

Under Construction

Consented

Appeal; Application

1:50,000

Scale @ A3

0

0.5

1

2 Km

NORTH

Produced By: RH

Ref:

Checked By: JP

Date: 22/03/2023

Viewpoint Plan

Figure 6.38a

VP13 - Lenamore Picnic Area, Gortin

Owenreagh / Craignagapple

Wind Farm

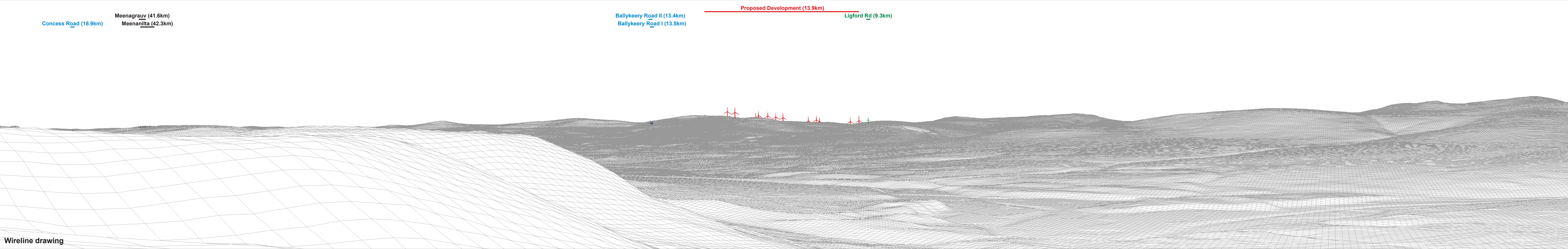
Environmental Statement

P:\2021\211591_Owenreagh\GIS\211591_OWEN\ES\211591_OWEN_ES_Fig6-26_to_Fig6-50_VP_Plans.mxd

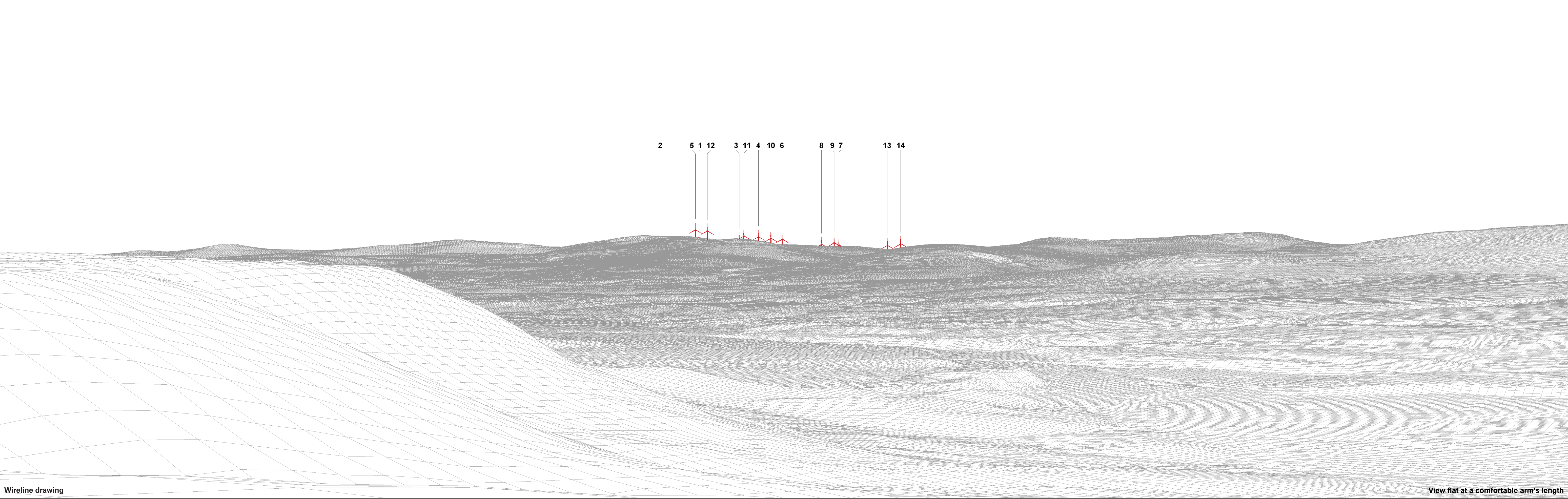


Baseline photograph

This image provides landscape and visual context only



Wireline drawing



Wireline drawing

View flat at a comfortable arm's length

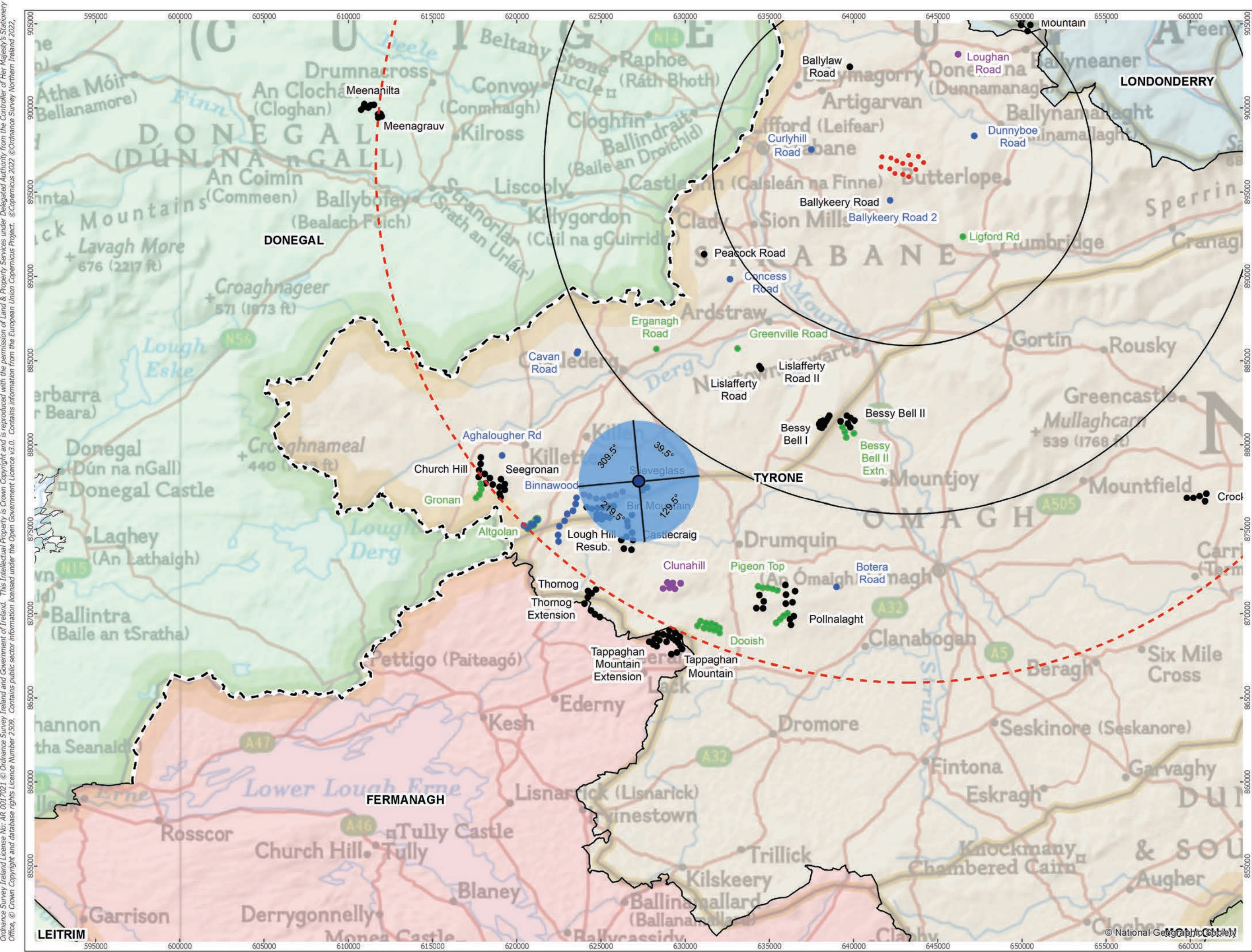
OS reference: Eye level: Direction of view: Nearest turbine:	250717 E 384119 N 255.1 mAOD 328.5° 13.92 km	Horizontal field of view: Principal distance: Paper size: Correct printed image size:	53.5° (planar projection) 812.5 mm 841 x 297 mm (half A1) 820 x 260 mm	Camera: Lens: Camera height: Date and time:	Canon EOS 5D Mark II EF50mm f/1.4 USM 1.5 m 10/08/2022 10:48	Figure 6.38c Viewpoint 13: Lenamore Picnic Area, Gortin Owenreagh/Craignagapple Wind Farm



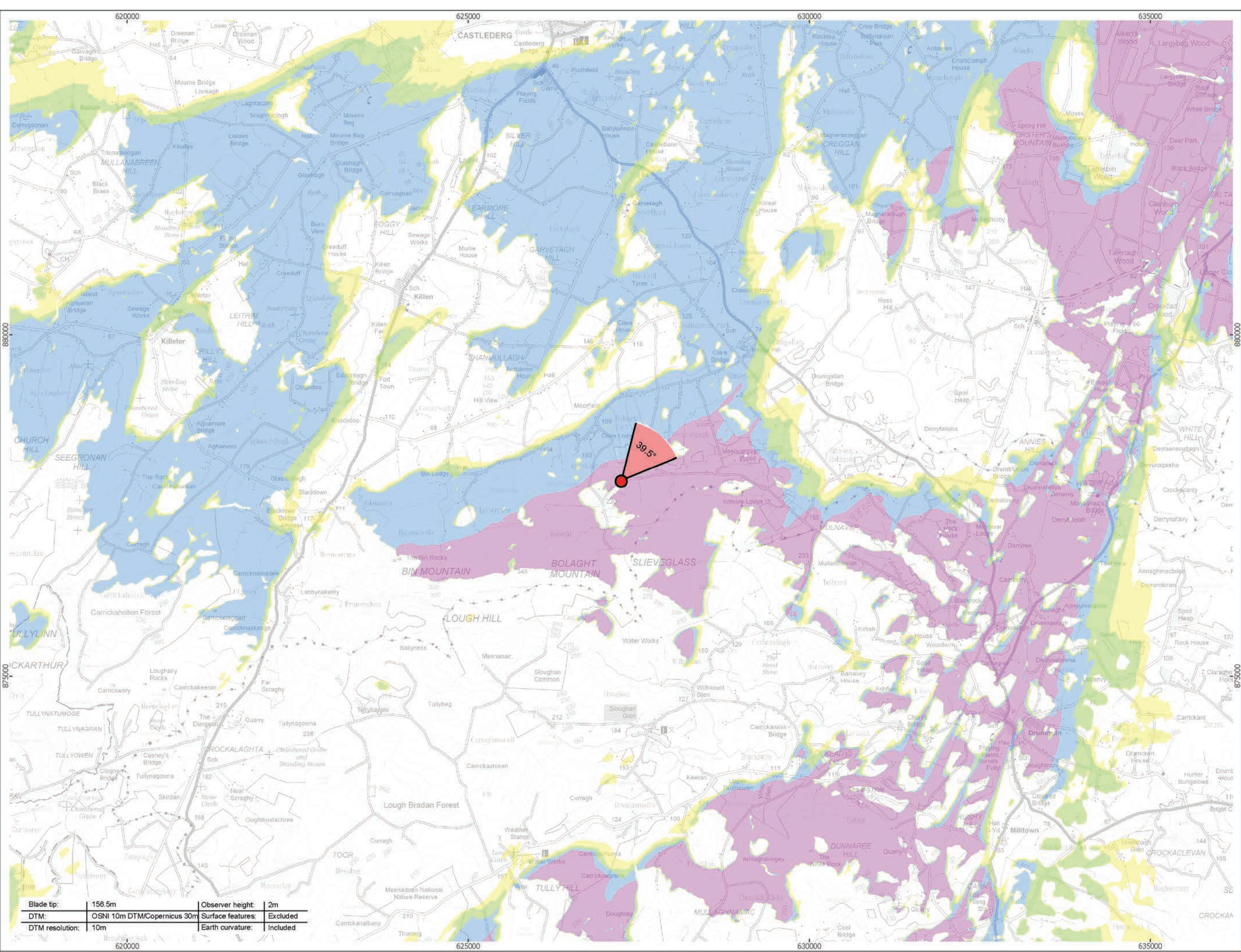
Photomontage: Proposed Development

View flat at a comfortable arm's length

OS reference:	250717 E 384119 N	Horizontal field of view:	53.5° (planar projection)	Camera:	Canon EOS 5D Mark II	Figure 6.38d
Eye level:	255.1 mAOD	Principal distance:	812.5 mm	Lens:	EF50mm f/1.4 USM	Viewpoint 13: Lenamore Picnic Area, Gortin
Direction of view:	328.5°	Paper size:	841 x 297 mm (half A1)	Camera height:	1.5 m	Owenreagh/Craignagapple Wind Farm
Nearest turbine:	13.92 km	Correct printed image size:	820 x 260 mm	Date and time:	10/08/2022 10:48	



Viewpoint Location Plan Baseline Panorama (90 Degree View)
Scale: 1:200,000



Viewpoint Location Plan (53.5 Degree View)
Scale: 1:50,000

open

optimised environments

PART OF SLR

Orsted

ERM

90 Degree Field of View

53.5 Degree Field of View

No. of Blade Tips Theoretically Visible

1 - 4

5 - 8

9 - 12

13 - 14

Proposed Wind Turbine

10km Radii

30km Study Area

NI/RoI Boundary Line

DONEGAL

LEITRIM

MONAGHAN

FERMANAGH

LONDONDERRY

TYRONE

Cumulative Wind Farm Status:

Operational

Under Construction

Consented

Appeal; Application

1:50,000

Scale @ A3

0 0.5 1 2 Km

NORTH

Produced By: RH

Ref:

Checked By: JP

Date: 25/04/2023

Viewpoint Plan

Figure 6.39a

VP14 - Ulster Way at Bolaght Mountain

Owenreagh / Craignagapple

Wind Farm

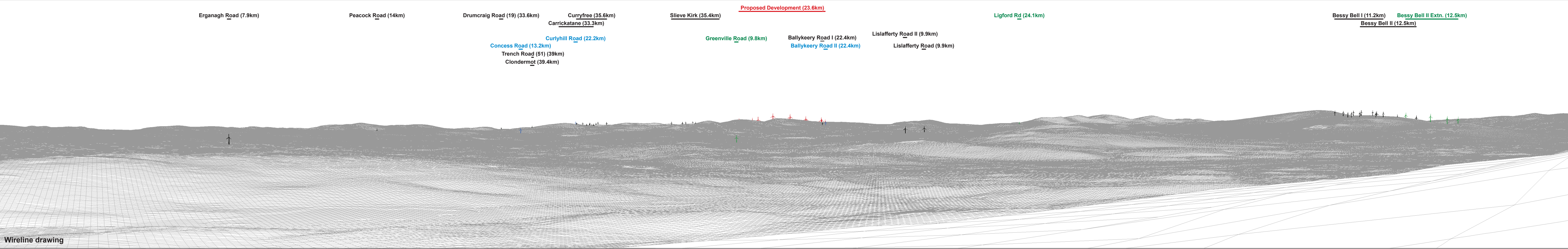
Environmental Statement

P:\2021\211591_Owenreagh\GIS\211591_OWEN\ES\211591_OWEN_ES_Fig6-50_VP_Plans.mxd

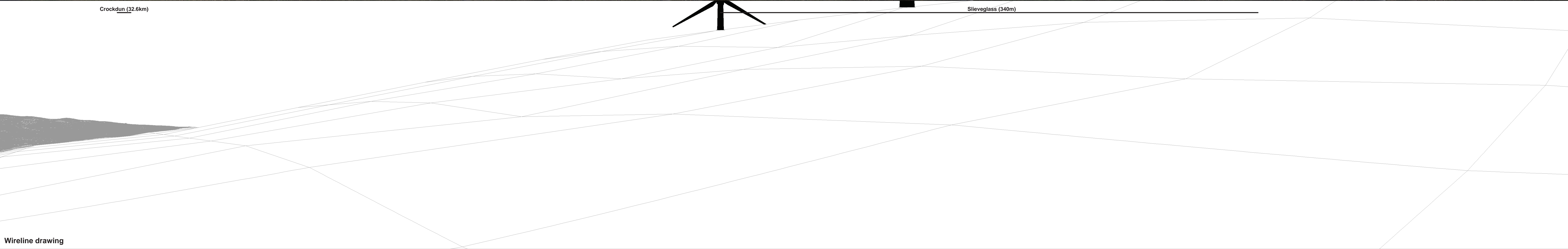


Baseline photograph

This image provides landscape and visual context only



Wireline drawing

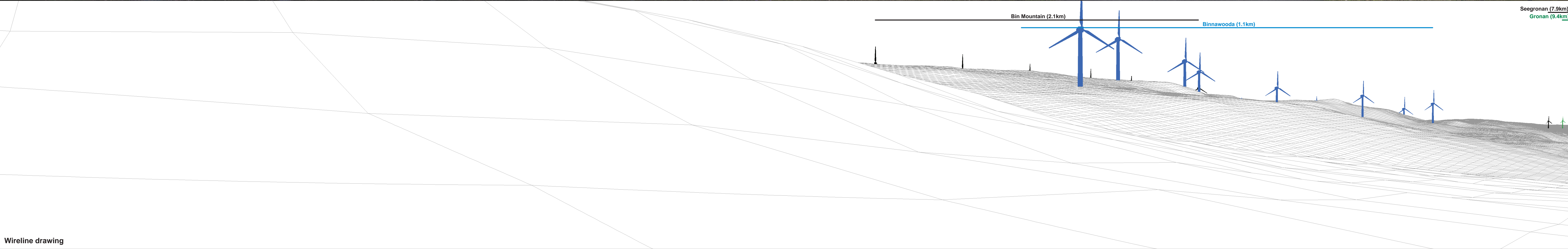


OS reference:	227297 E 377865 N	Horizontal field of view:	90° (cylindrical projection)	Camera:	Canon EOS 6D	Figure 6.39c
Eye level:	234.9 mAO	Principal distance:	522 mm	Lens:	EF50mm f/1.4 USM	Viewpoint 14: Ulster Way at Bolaght Mountain
Direction of view:	129.5°	Paper size:	841 x 297 mm (half A1)	Camera height:	3 m	Owenreagh/Craignagapple Wind Farm
Nearest turbine:	23.56 km	Correct printed image size:	820 x 130 mm	Date and time:	30/08/2022 15:31	



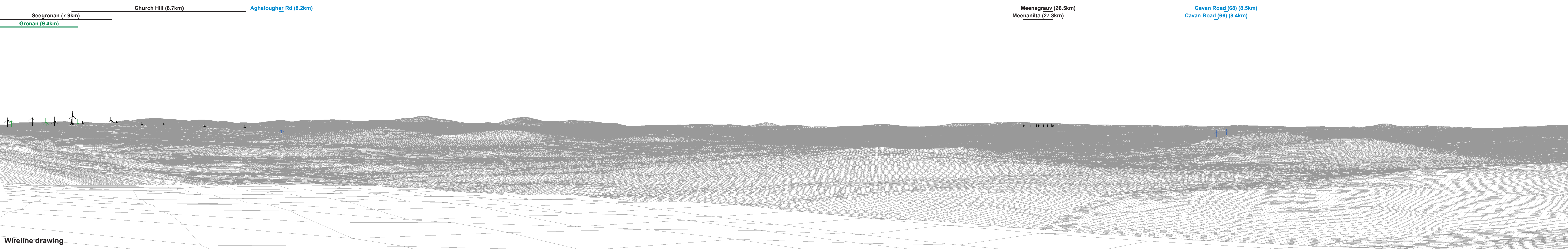
Baseline photograph

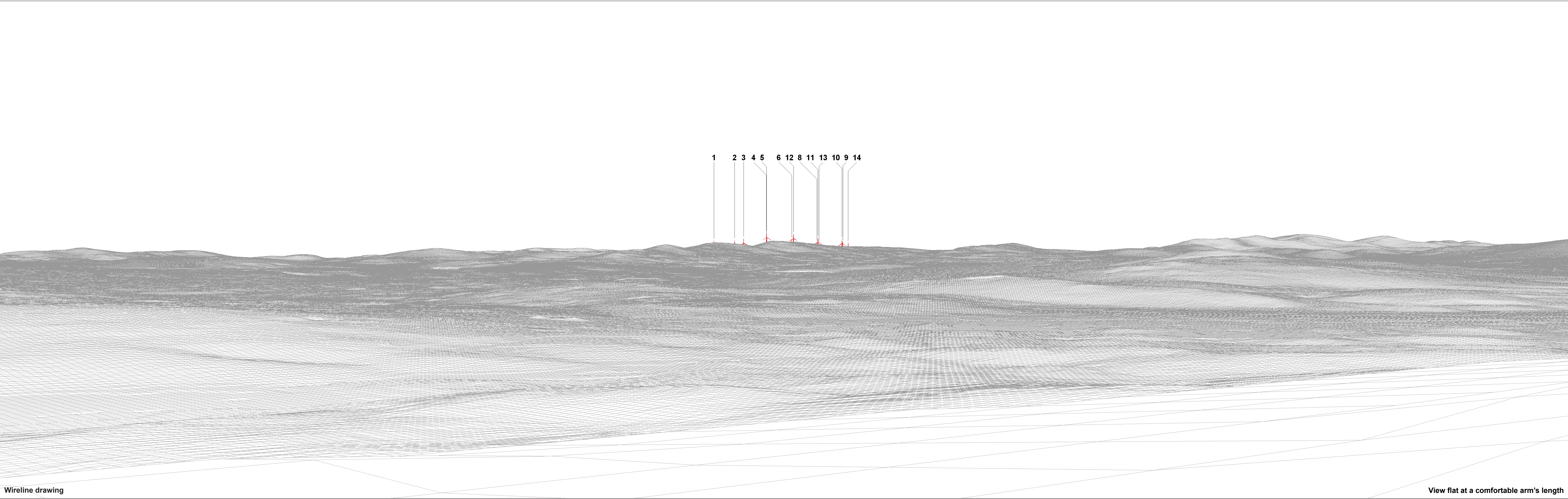
This image provides landscape and visual context only



Wireline drawing

OS reference:	227297 E 377865 N	Horizontal field of view:	90° (cylindrical projection)	Camera:	Canon EOS 6D	Figure 6.39d
Eye level:	234.9 mAOB	Principal distance:	522 mm	Lens:	EF50mm f/1.4 USM	Viewpoint 14: Ulster Way at Bolaght Mountain
Direction of view:	219.5°	Paper size:	841 x 297 mm (half A1)	Camera height:	3 m	Owenreagh/Craignagapple Wind Farm
Nearest turbine:	23.56 km	Correct printed image size:	820 x 130 mm	Date and time:	30/08/2022 15:31	



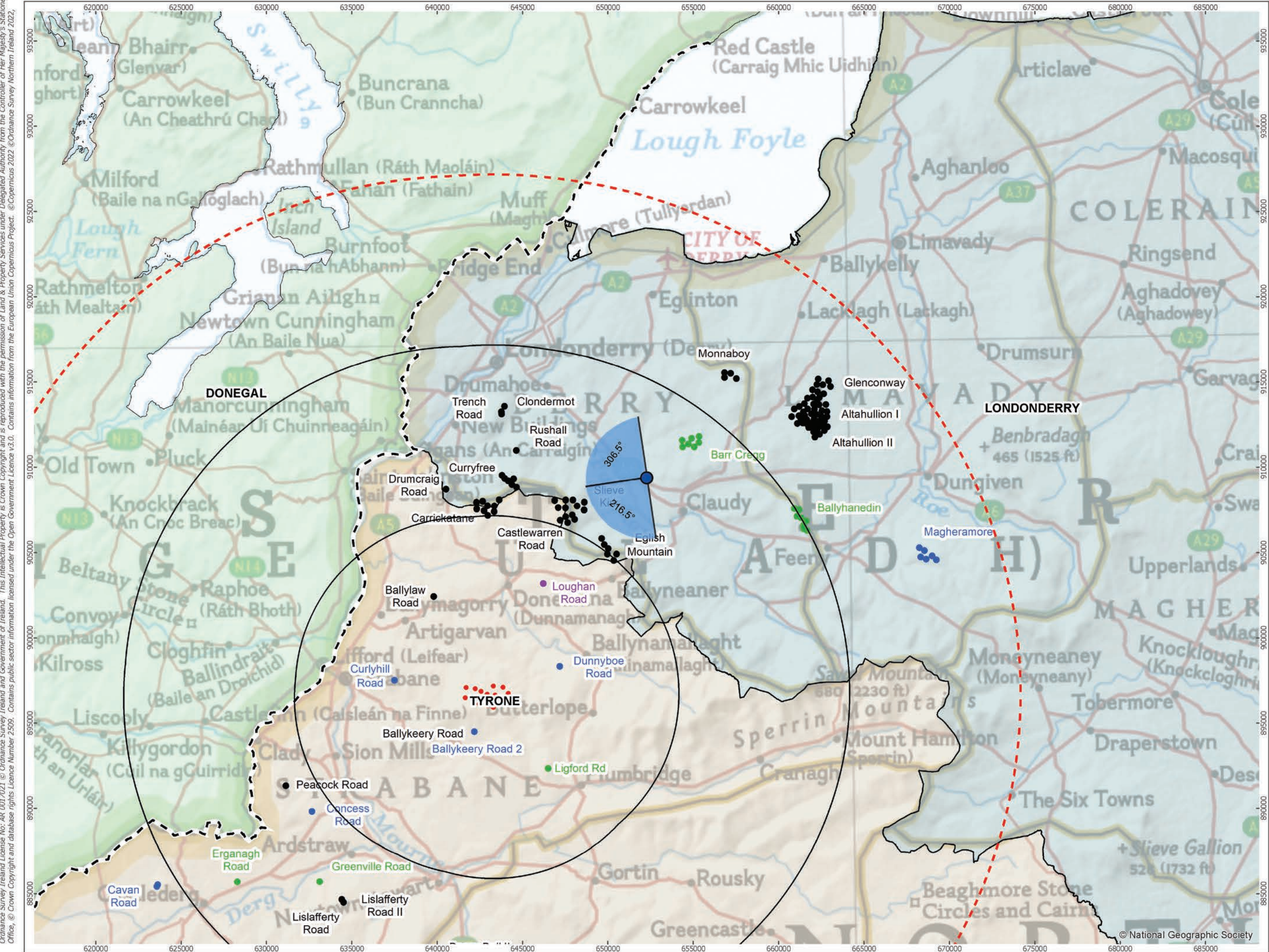




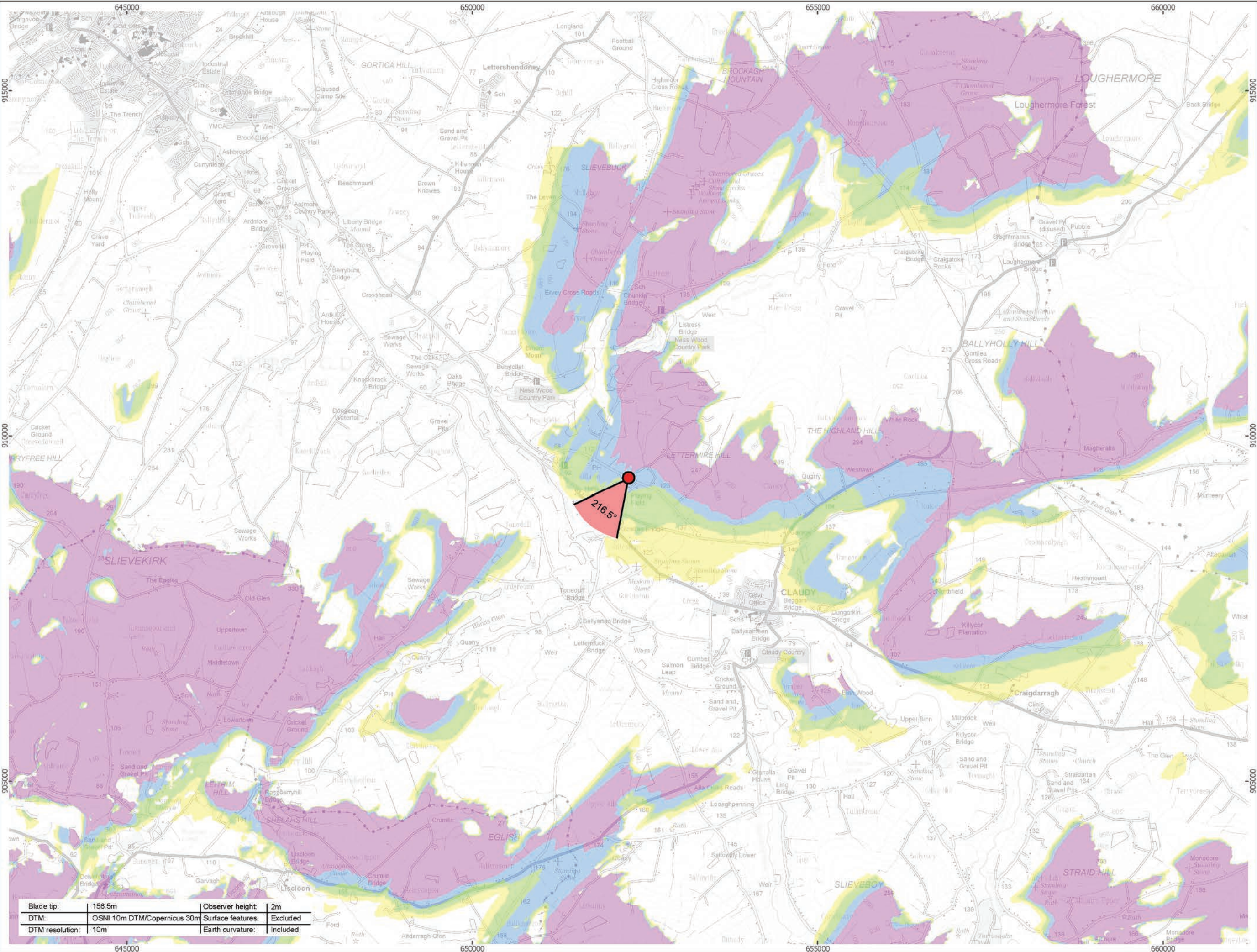
Photomontage: Proposed Development

View flat at a comfortable arm's length

OS reference:	227297 E 377865 N	Horizontal field of view:	53.5° (planar projection)	Camera:	Canon EOS 6D	Figure 6.39g
Eye level:	234.9 mAOD	Principal distance:	812.5 mm	Lens:	EF50mm f/1.4 USM	Viewpoint 14: Ulster Way at Bolaght Mountain
Direction of view:	39.5°	Paper size:	841 x 297 mm (half A1)	Camera height:	3 m	Owenreagh/Craignagapple Wind Farm
Nearest turbine:	23.56 km	Correct printed image size:	820 x 260 mm	Date and time:	30/08/2022 15:31	Contains information from the European Union Copernicus Project. ©Copernicus 2023 ©Ordnance Survey Northern Ireland 2023, licensed under the Open Government Licence v3.0.



Viewpoint Location Plan Baseline Panorama (90 Degree View)
Scale: 1:200,000



Viewpoint Location Plan (53.5 Degree View)
Scale: 1:50,000

open

optimised environments

PART OF SLR

Orsted

ERM

90 Degree Field of View

53.5 Degree Field of View

No. of Blade Tips Theoretically Visible

1 - 4

5 - 8

9 - 12

13 - 14

Proposed Wind Turbine

10km Radii

30km Study Area

NI/RoI Boundary Line

DONEGAL

LONDONDERRY

TYRONE

Cumulative Wind Farm Status:

Operational

Under Construction

Consented

Appeal; Application

1:50,000

Scale @ A3

0

0.5

1

2 Km

NORTH

Produced By: RH

Ref:

Checked By: JP

Date: 22/03/2023

Viewpoint Plan

Figure 6.40a

VP15 - Foreglen Road, Killaloo

Owenreagh / Craignagapple

Wind Farm

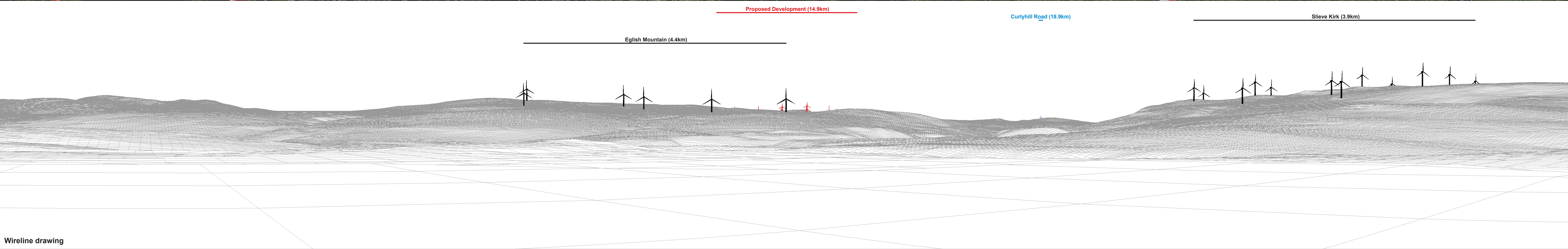
Environmental Statement

P:\2021\211591_Owenreagh\GIS\211591_OWEN\ES\211591_OWEN_ES_Fig6-26_to_Fig6-50_VP_Plans.mxd

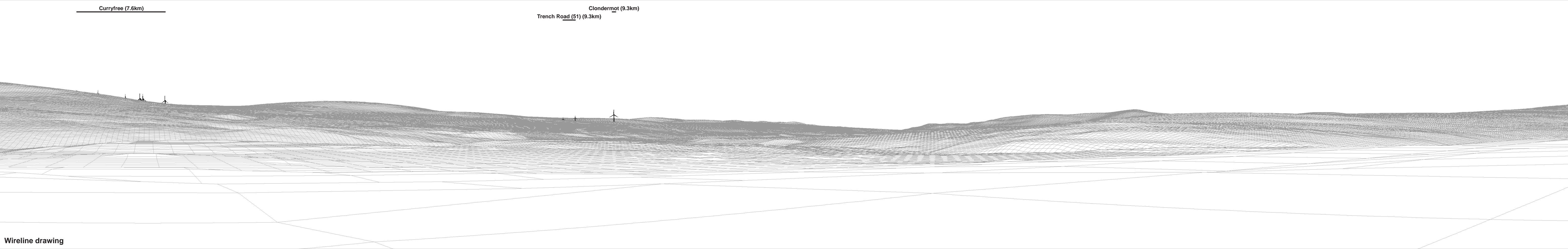


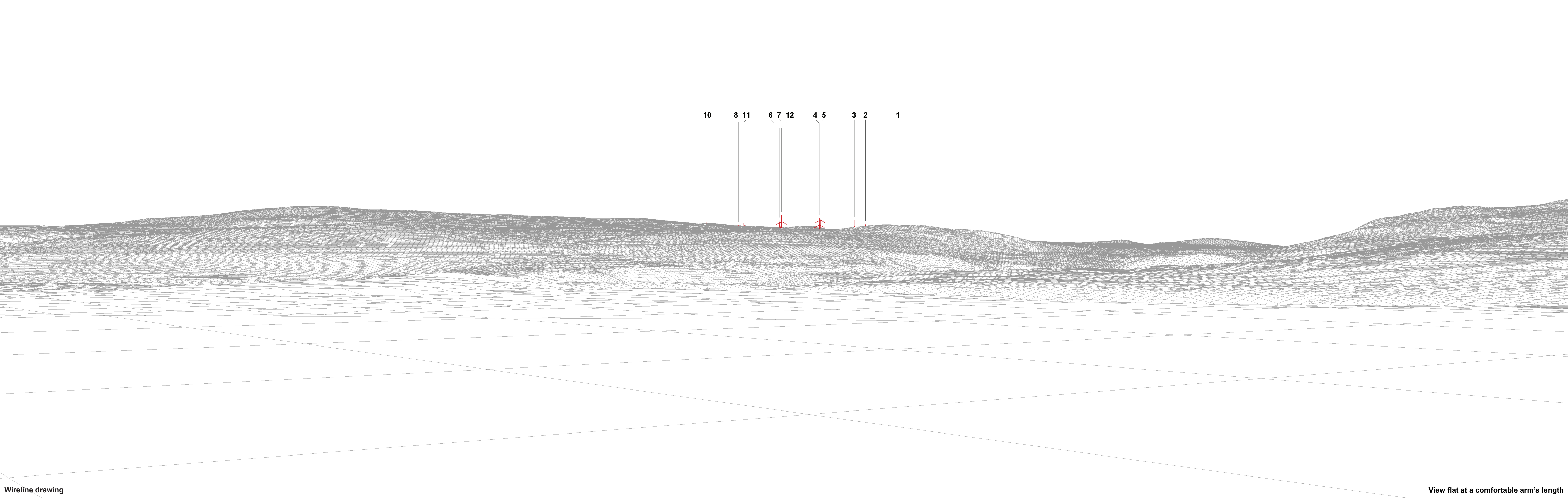
Baseline photograph

This image provides landscape and visual context only



Wireline drawing





Wireline drawing

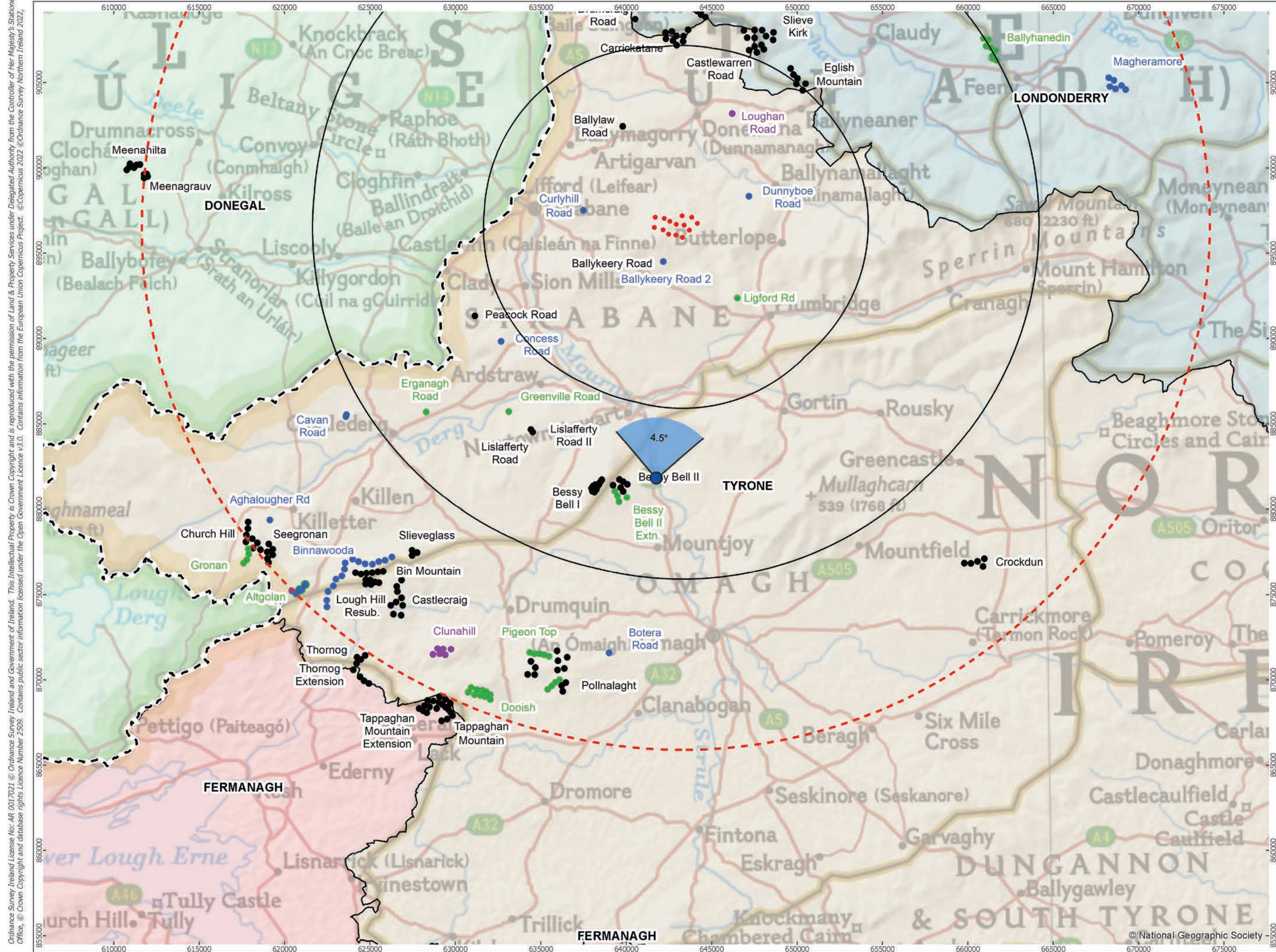
View flat at a comfortable arm's length



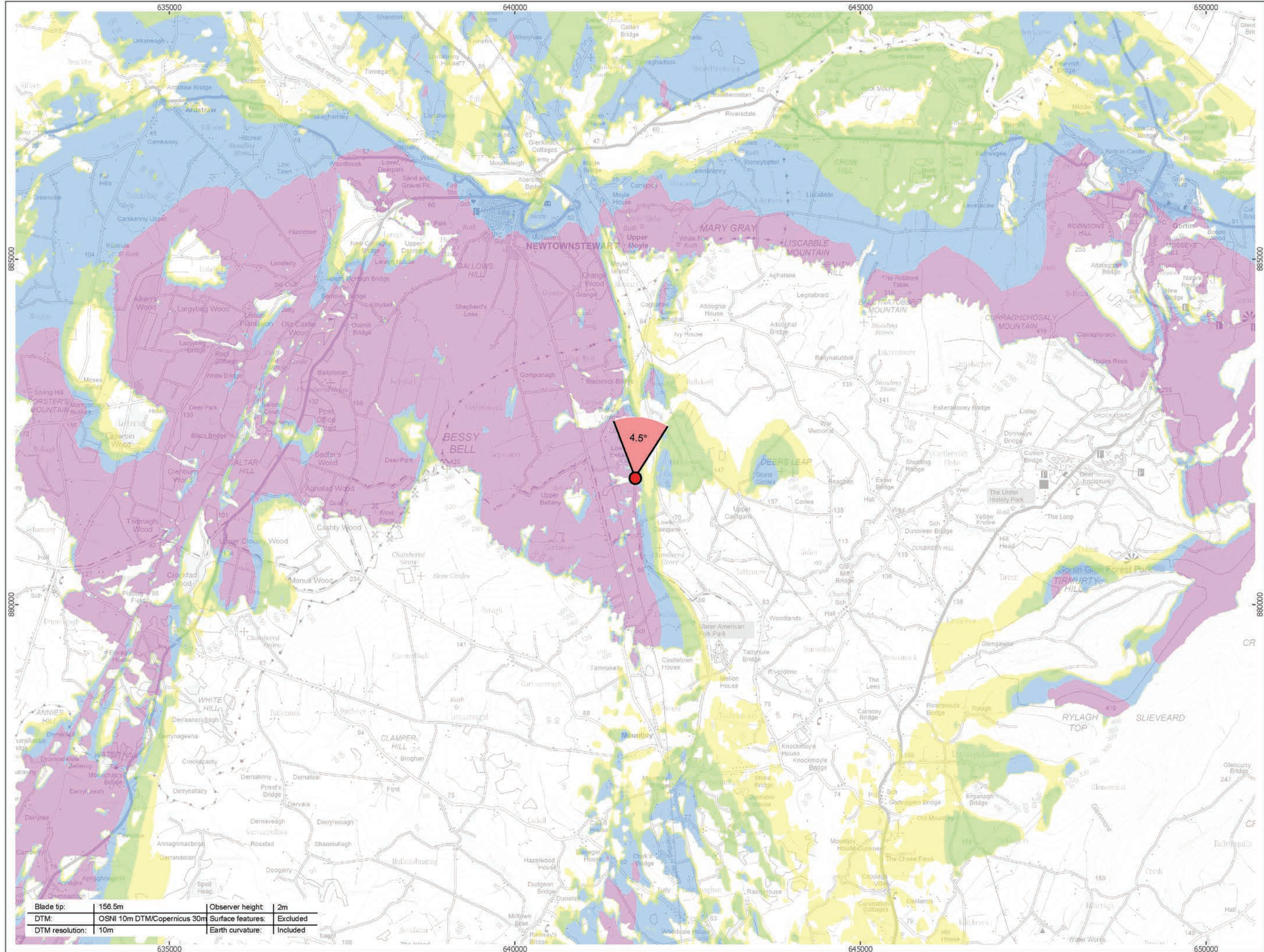
Photomontage: Proposed Development

View flat at a comfortable arm's length

OS reference:	252323 E 409407 N	Horizontal field of view:	53.5° (planar projection)	Camera:	Canon EOS 5D Mark II	Figure 6.40e
Eye level:	127.3 mAOD	Principal distance:	812.5 mm	Lens:	EF50mm f/1.4 USM	Viewpoint 15: Foreglen Road, Killaloo
Direction of view:	216.5°	Paper size:	841 x 297 mm (half A1)	Camera height:	1.5 m	Owenreagh/Craignagapple Wind Farm
Nearest turbine:	14.91 km	Correct printed image size:	820 x 260 mm	Date and time:	10/08/2022 08:37	Contains information from the European Union Copernicus Project. ©Copernicus 2023 ©Ordnance Survey Northern Ireland 2023, licensed under the Open Government Licence v3.0.



Viewpoint Location Plan Baseline Panorama (90 Degree View)
Scale: 1:200,000



Viewpoint Location Plan (53.5 Degree View)
Scale: 1:50,000

open

optimised environments

PART OF SLR

Orsted

ERM

90 Degree Field of View

53.5 Degree Field of View

No. of Blade Tips Theoretically Visible

1 - 4

5 - 8

9 - 12

13 - 14

Proposed Wind Turbine

10km Radii

30km Study Area

NI/RoI Boundary Line

DONEGAL

FERMANAGH

LONDONDERRY

TYRONE

Cumulative Wind Farm Status:

Operational

Under Construction

Consented

Appeal; Application

1:50,000

Scale @ A3

0 0.5 1 2 Km

NORTH

Produced By: RH

Ref:

Checked By: JP

Date: 22/03/2023

Viewpoint Plan

Figure 6.41a

VP16 - A5 Strule River Valley

Owenreagh / Craignagapple

Wind Farm

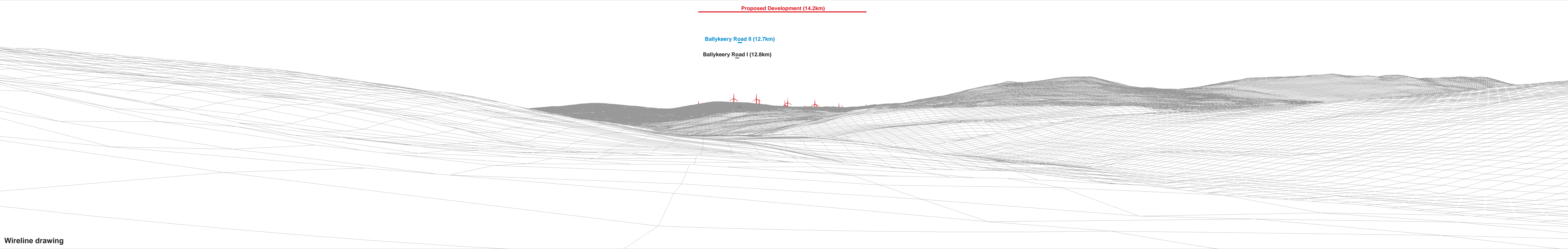
Environmental Statement

P:\2021\211591_OwenVIA\GIS\211591_OWEN\ES\211591_OWEN_ES_Fig6-26_to_Fig6-50_VP_Plans.mxd

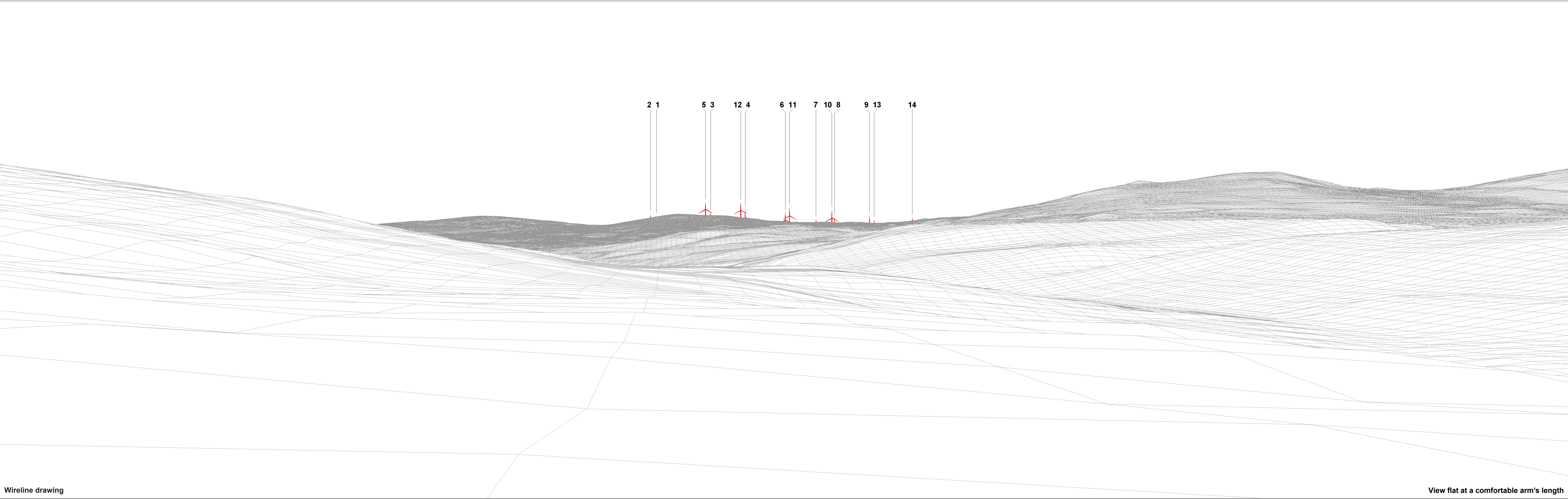


Baseline photograph

This image provides landscape and visual context only



Wireline drawing



Wireline drawing

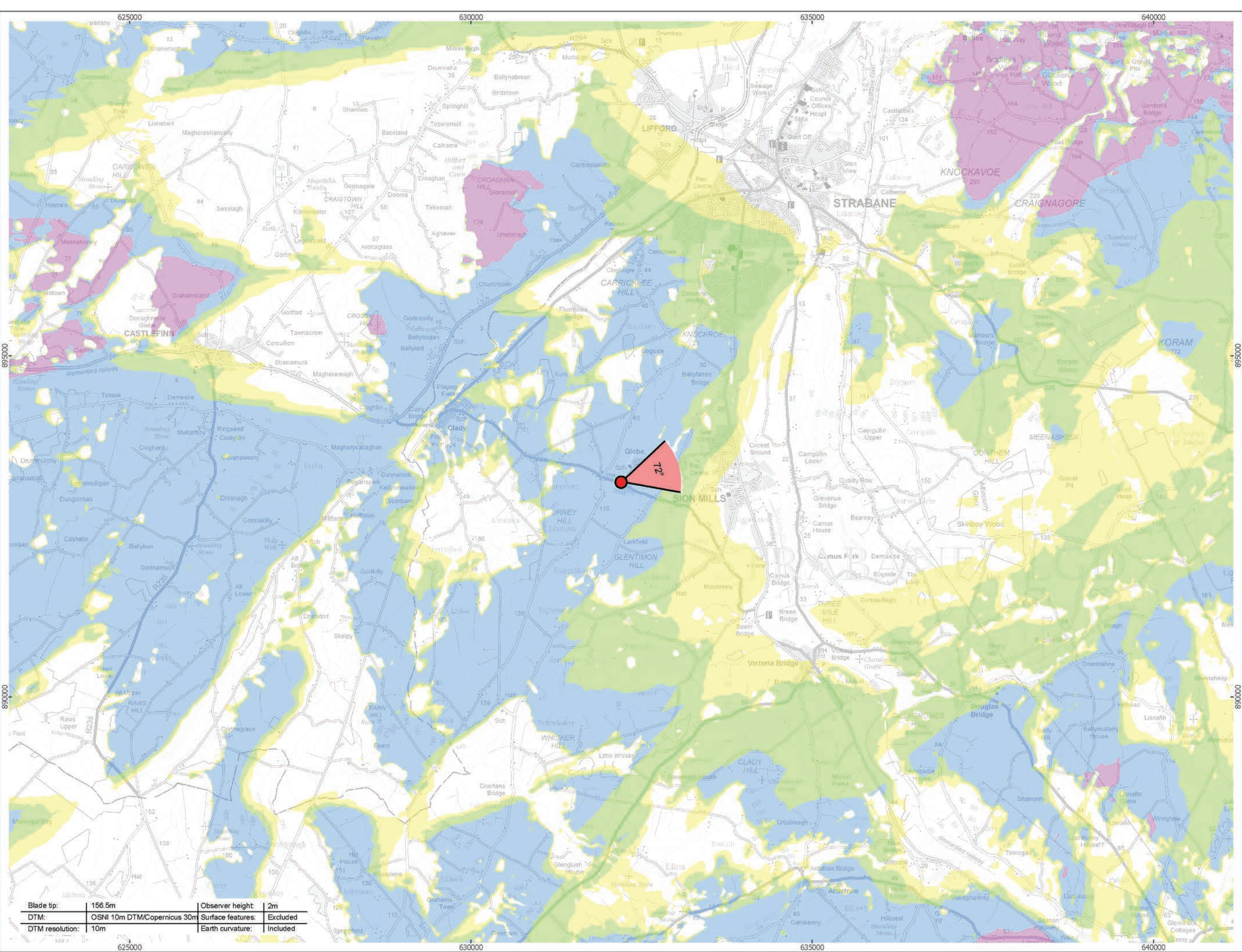
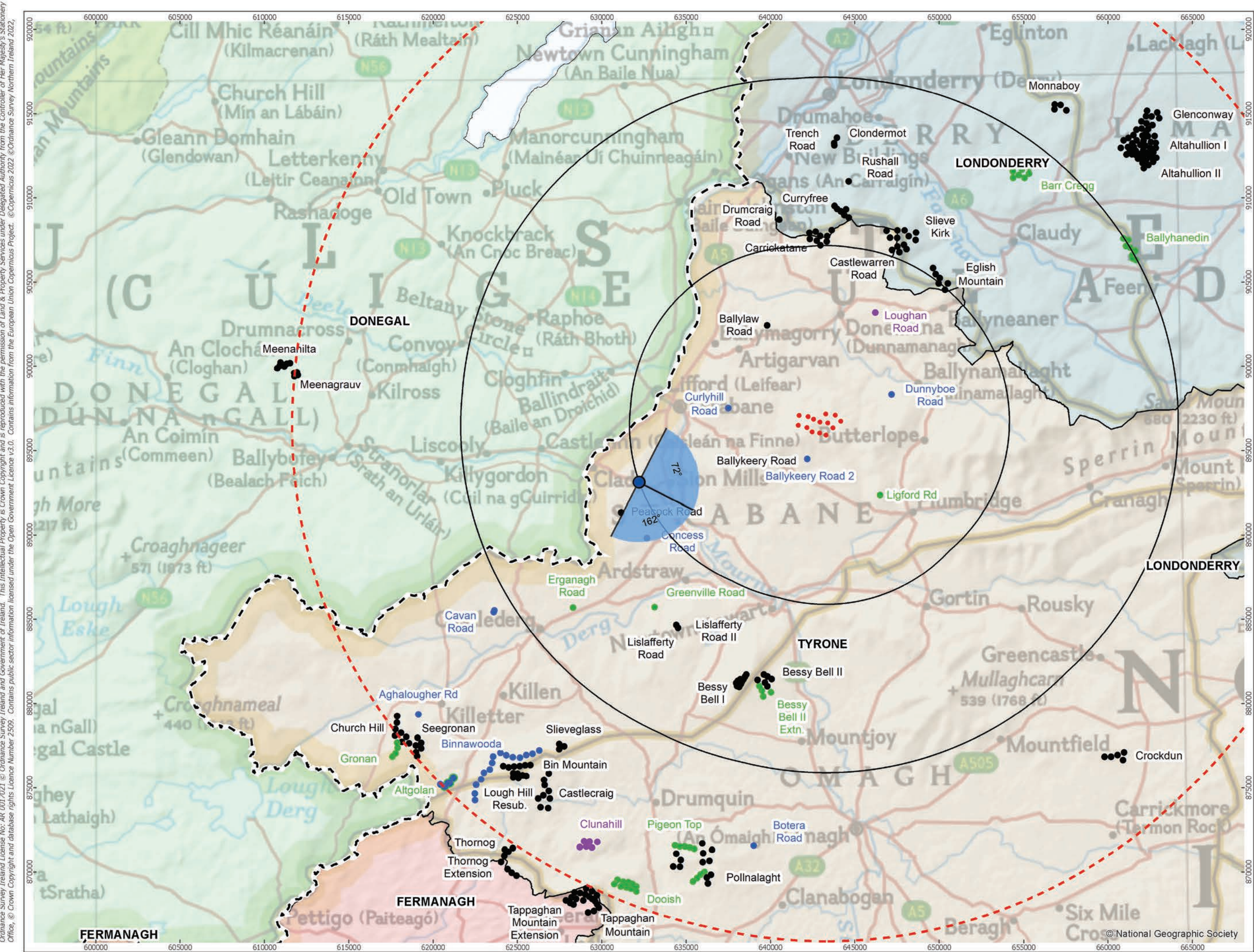
View flat at a comfortable arm's length



Photomontage: Proposed Development

View flat at a comfortable arm's length

OS reference:	241801 E 381839 N	Horizontal field of view:	53.5° (planar projection)	Camera:	Canon EOS 5D Mark II	Figure 6.41d
Eye level:	69.4 mAOD	Principal distance:	812.5 mm	Lens:	EF50mm f/1.4 USM	Viewpoint 16: A5 Strule River Valley
Direction of view:	4.5°	Paper size:	841 x 297 mm (half A1)	Camera height:	1.5 m	Owenreagh/Craignagapple Wind Farm
Nearest turbine:	14.17 km	Correct printed image size:	820 x 260 mm	Date and time:	10/08/2022 11:25	<small>Contains information from the European Union Copernicus Project. ©Copernicus 2023 ©Ordnance Survey Northern Ireland 2023, licensed under the Open Government Licence v3.0.</small>



open
optimised environments
PART OF SLR

Orsted

ERM

Viewpoint Plan
Figure 6.42a
VP17 - Bells Park Road, Glebe

Owenreagh / Craignagapple Wind Farm Environmental Statement

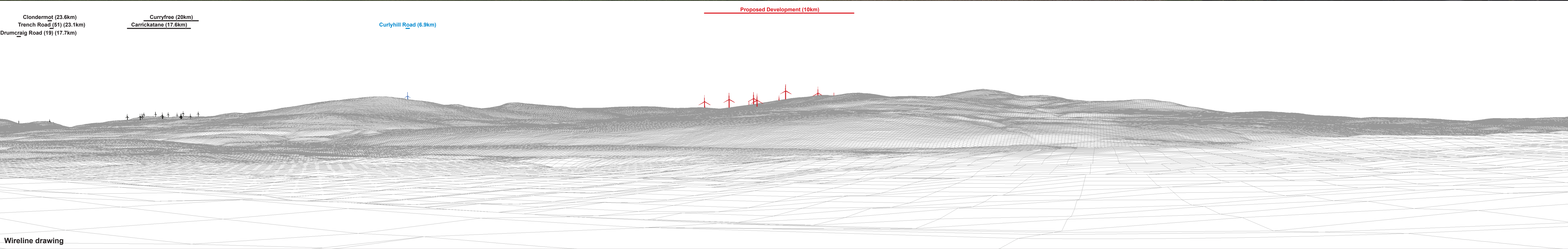
1:50,000 Scale @ A3
0 0.5 1 2 Km

Produced By: RH Ref:
Checked By: JP Date: 22/03/2023



Baseline photograph

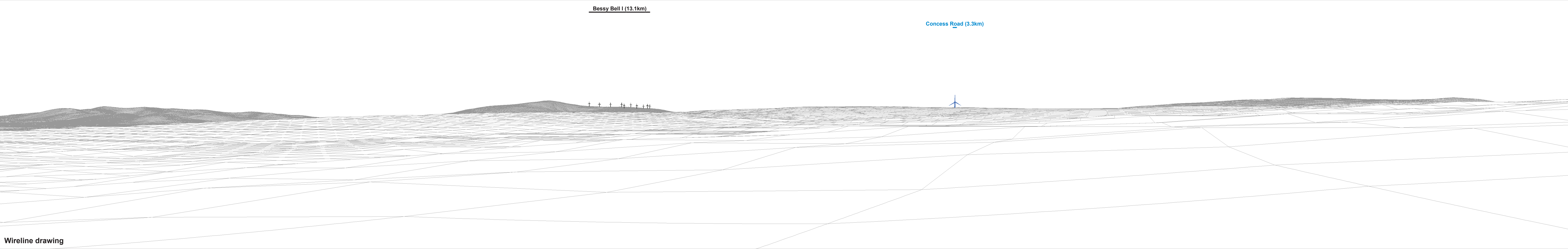
This image provides landscape and visual context only



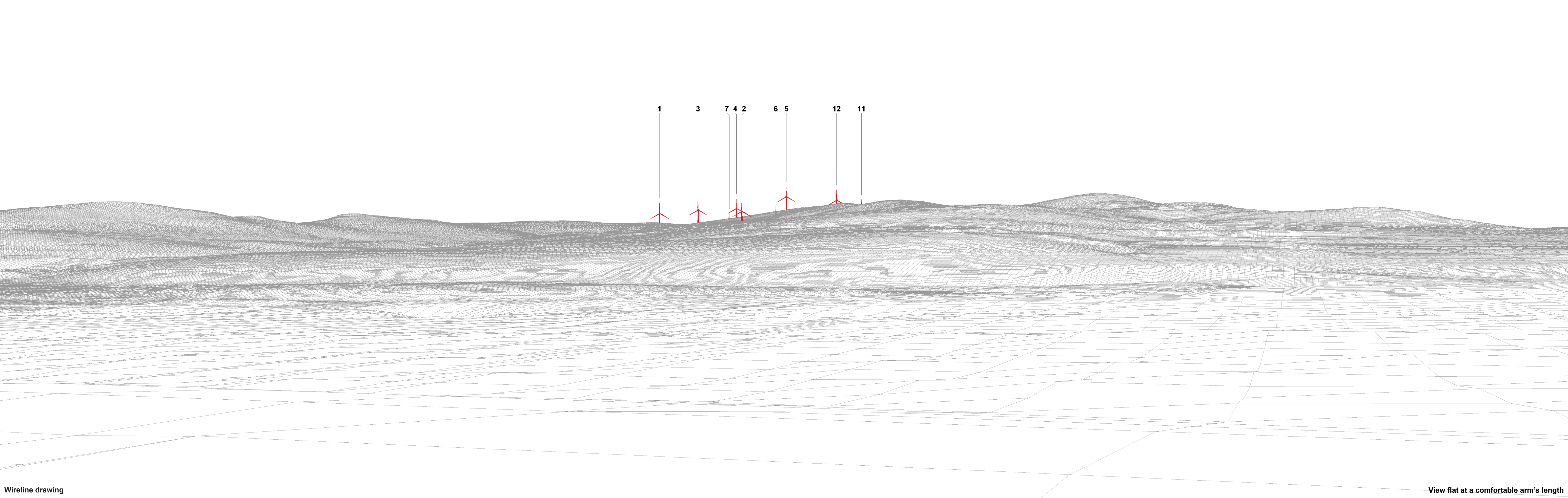


Baseline photograph

This image provides landscape and visual context only



Wireline drawing



Wireline drawing

View flat at a comfortable arm's length

OS reference:	232255 E 393158 N	Horizontal field of view:	53.5° (planar projection)	Camera:	Canon EOS 5D Mark II	Figure 6.42d
Eye level:	98.2 mAOD	Principal distance:	812.5 mm	Lens:	EF50mm f/1.4 USM	Viewpoint 17: Bells Park Road, Glebe
Direction of view:	72°	Paper size:	841 x 297 mm (half A1)	Camera height:	1.5 m	Owenreagh/Craignagapple Wind Farm
Nearest turbine:	10.02 km	Correct printed image size:	820 x 260 mm	Date and time:	10/08/2022 12:27	Contains information from the European Union Copernicus Project. ©Copernicus 2023 ©Ordnance Survey Northern Ireland 2023, licensed under the Open Government Licence v3.0.



Photomontage: Proposed Development

View flat at a comfortable arm's length

OS reference:	232255 E 393158 N	Horizontal field of view:	53.5° (planar projection)	Camera:	Canon EOS 5D Mark II	Figure 6.42e
Eye level:	98.2 mAOD	Principal distance:	812.5 mm	Lens:	EF50mm f/1.4 USM	Viewpoint 17: Bells Park Road, Glebe
Direction of view:	72°	Paper size:	841 x 297 mm (half A1)	Camera height:	1.5 m	Owenreagh/Craignagapple Wind Farm
Nearest turbine:	10.02 km	Correct printed image size:	820 x 260 mm	Date and time:	10/08/2022 12:27	Contains information from the European Union Copernicus Project. ©Copernicus 2023 ©Ordnance Survey Northern Ireland 2023, licensed under the Open Government Licence v3.0.