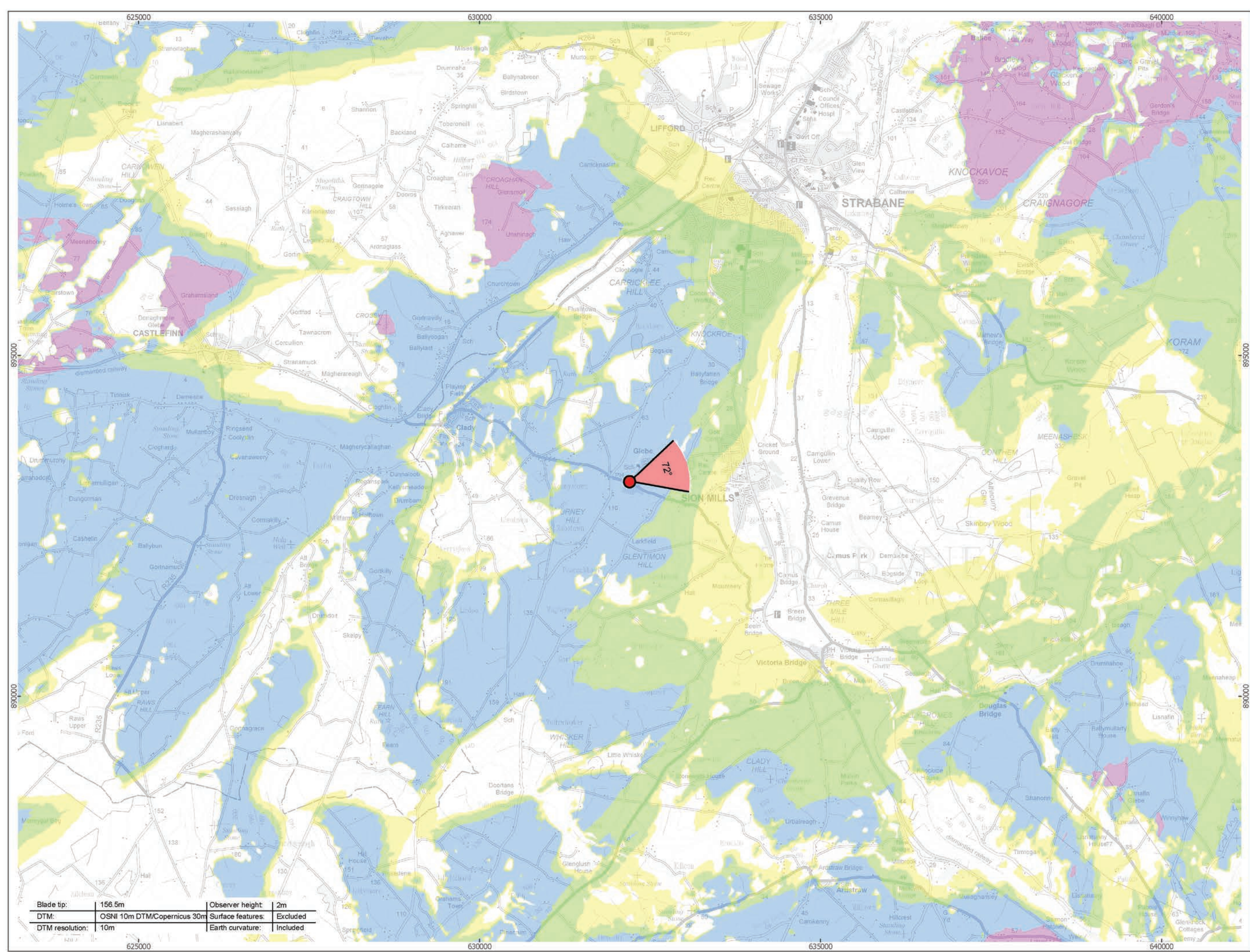


Viewpoint Location Plan Baseline Panorama (90 Degree View)  
Scale: 1:200,000



Viewpoint Location Plan (53.5 Degree View)  
Scale: 1:50,000

open

optimised environments

PART OF SLR

Orsted

ERM

90 Degree Field of View

53.5 Degree Field of View

No. of Blade Tips Theoretically Visible

1 - 4

5 - 8

9 - 12

13 - 14

Proposed Wind Turbine

10km Radii

30km Study Area

NI/RoI Boundary Line

DONEGAL

FERMANAGH

LONDONDERRY

TYRONE

Cumulative Wind Farm Status:

Operational

Under Construction

Consented

Appeal; Application

1:50,000

Scale @ A3

0

0.5

1

2 Km

NORTH

Produced By: RH

Ref:

Checked By: JP

Date: 22/03/2023

Viewpoint Plan

Figure 6.42a

VP17 - Bells Park Road, Glebe

Owenreagh / Craignagapple

Wind Farm

Environmental Statement

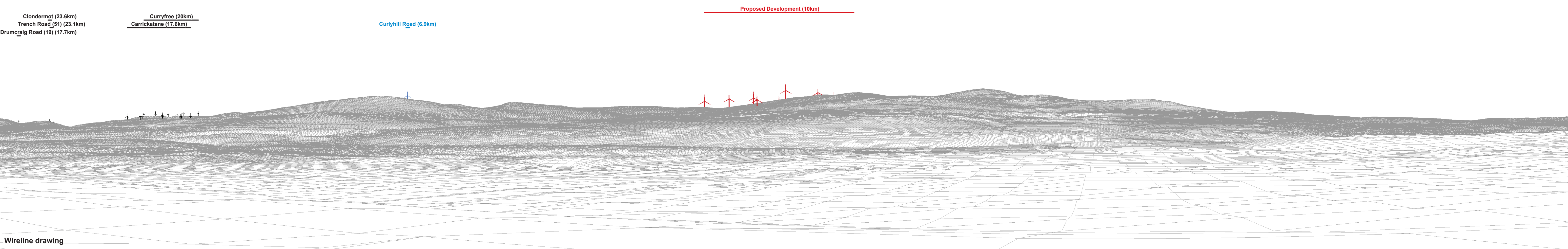
P:\2021\211591\_OwenVIA\GIS\211591\_OWEN\ES\211591\_OWEN\_ES\_Fig6-26\_to\_Fig6-50\_VP\_Plans.mxd



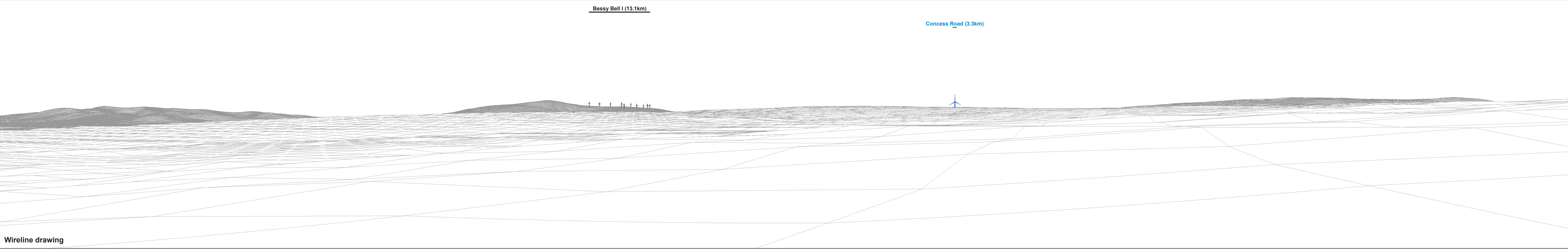


Baseline photograph

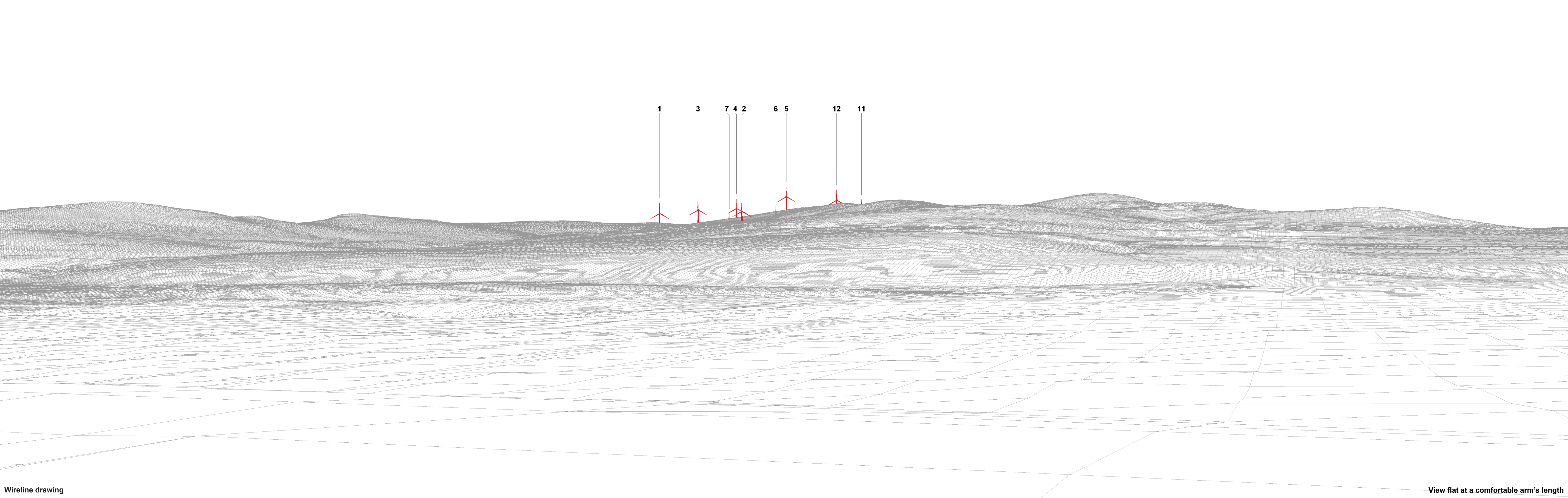
This image provides landscape and visual context only











Wireline drawing

View flat at a comfortable arm's length

OS reference:	232255 E 393158 N	Horizontal field of view:	53.5° (planar projection)	Camera:	Canon EOS 5D Mark II	Figure 6.42d
Eye level:	98.2 mAOD	Principal distance:	812.5 mm	Lens:	EF50mm f/1.4 USM	Viewpoint 17: Bells Park Road, Glebe
Direction of view:	72°	Paper size:	841 x 297 mm (half A1)	Camera height:	1.5 m	Owenreagh/Craignagapple Wind Farm
Nearest turbine:	10.02 km	Correct printed image size:	820 x 260 mm	Date and time:	10/08/2022 12:27	Contains information from the European Union Copernicus Project. ©Copernicus 2023 ©Ordnance Survey Northern Ireland 2023, licensed under the Open Government Licence v3.0.



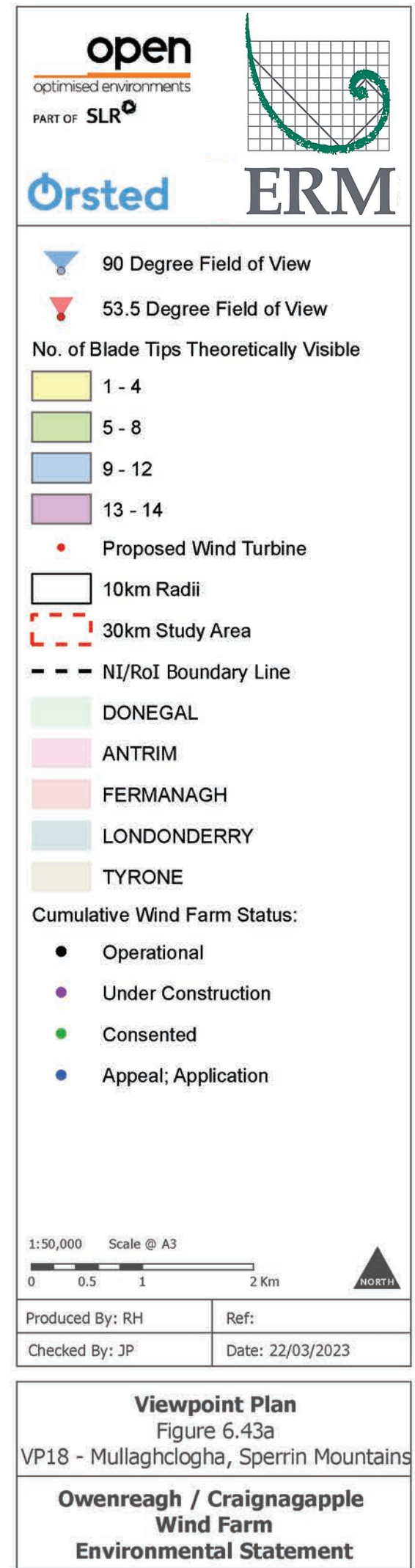
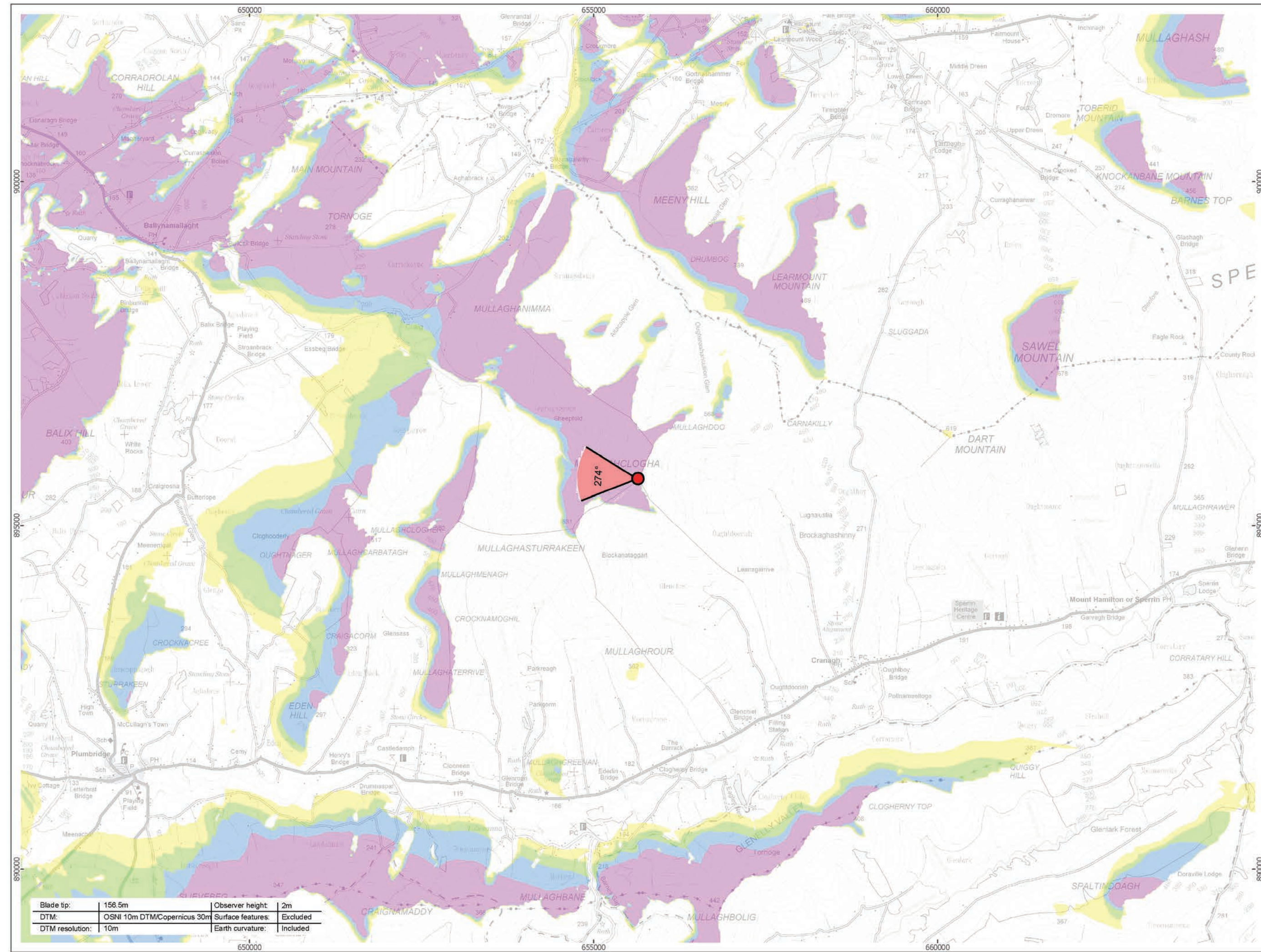
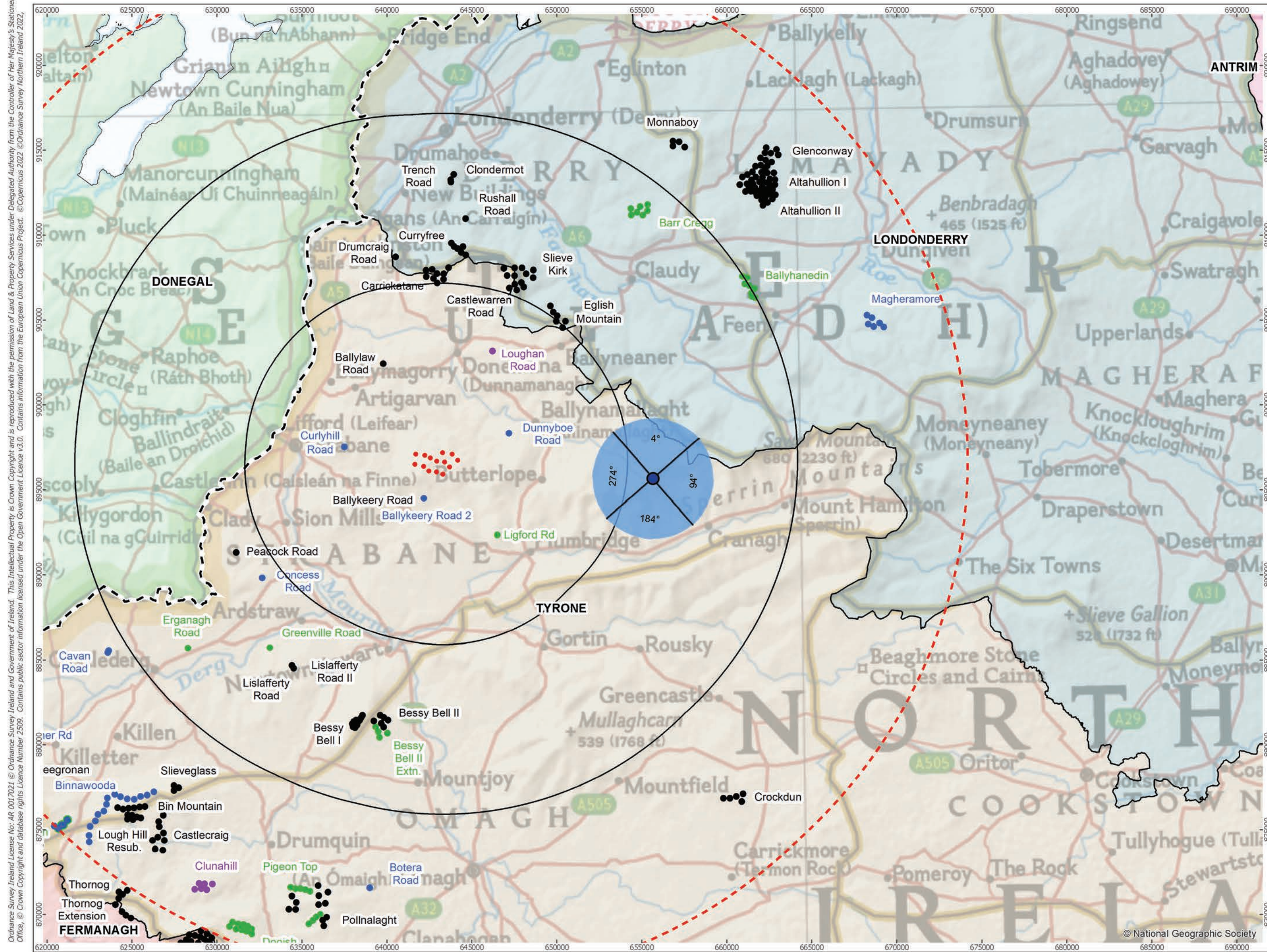


Photomontage: Proposed Development

View flat at a comfortable arm's length

OS reference:	232255 E 393158 N	Horizontal field of view:	53.5° (planar projection)	Camera:	Canon EOS 5D Mark II
Eye level:	98.2 mAOD	Principal distance:	812.5 mm	Lens:	EF50mm f/1.4 USM
Direction of view:	72°	Paper size:	841 x 297 mm (half A1)	Camera height:	1.5 m
Nearest turbine:	10.02 km	Correct printed image size:	820 x 260 mm	Date and time:	10/08/2022 12:27





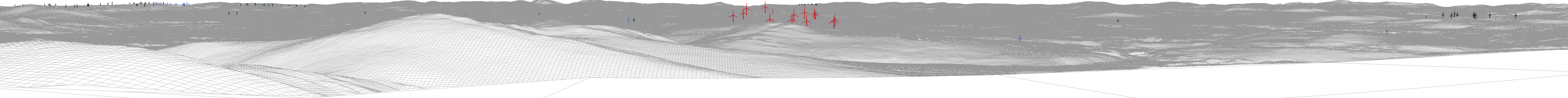




Baseline photograph

This image provides landscape and visual context only

Bessy Bell II (21.1km)	Slieveglass (33.3km)	Lislaftery Road (23.9km)	Erganagh Road (29.1km)	Concess Road (23.7km)	Peacock Road (24.9km)	Ballykeery Road II (13.5km)	Proposed Development (11.5km)	Dunnyboe Road (8.9km)	Ballylaw Road (17.2km)	Drumcraig Road (19) (20km)	Carrickatane (17km)
Thornog Extension (40.2km)	Lough Hill Resubmission (36.1km)	Seegronan (40.6km)	Ligford Rd (9.7km)			Ballykeery Road I (13.5km)	Meenagrauv (43.8km)				
Bessy Bell I (22km)	Binnawooda (34.7km)	Lislaftery Road II (23.9km)	Cavan Road (68) (33.6km)				Meenanilta (44.4km)				
Thornog (39.3km)		Greenville Road (24.6km)	Cavan Road (66) (33.7km)				Curlyhill Road (18.2km)				
Castlecraig (35km)	Altgolan (39.9km)	Gronan (41.8km)									
		Church Hill (41.2km)									



Wireline drawing

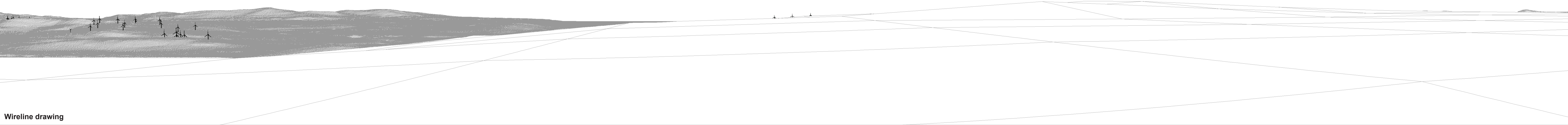




Baseline photograph

This image provides landscape and visual context only

Curryfree (17.2km) Eglish Mountain (10.3km) Monnaboy (19.6km)  
Castlewarren Road (14.1km) Slieve Kirk (13.6km) Clondermot (21.4km)



Wireline drawing

OS reference:	255704 E 395693 N	Horizontal field of view:	90° (cylindrical projection)	Camera:	Canon EOS 6D
Eye level:	633.6 mAOD	Principal distance:	522 mm	Lens:	EF50mm f/1.4 USM
Direction of view:	4°	Paper size:	841 x 297 mm (half A1)	Camera height:	1.5 m
Nearest turbine:	11.53 km	Correct printed image size:	820 x 130 mm	Date and time:	30/08/2022 13:17

Figure 6.43c  
Viewpoint 18: Mullaghclogha, Sperrin Mountains  
Owenreagh/Craignagapple Wind Farm

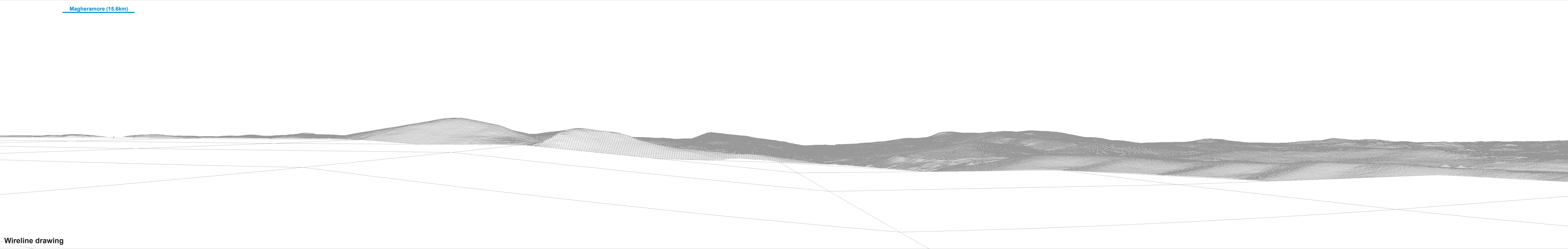




Baseline photograph

This image provides landscape and visual context only

[Magheramore \(15.6km\)](#)



Wireline drawing

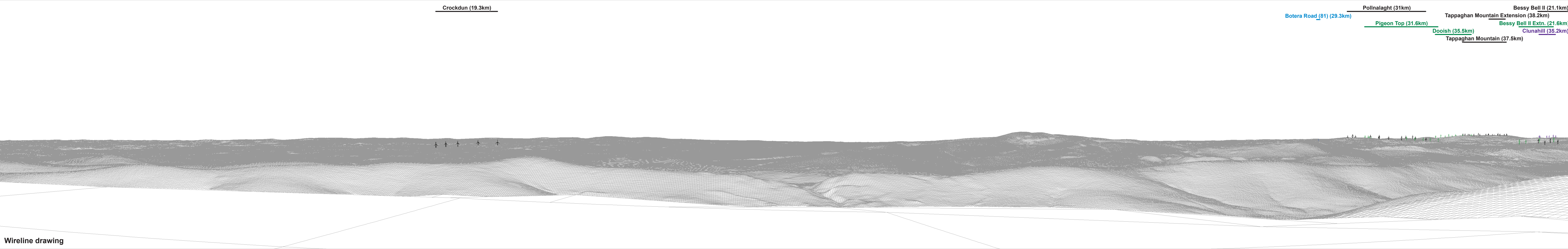
<b>OS reference:</b>	255704 E 395693 N	<b>Horizontal field of view:</b>	90° (cylindrical projection)	<b>Camera:</b>	Canon EOS 6D	<b>Figure 6.43d</b>
<b>Eye level:</b>	633.6 mAOD	<b>Principal distance:</b>	522 mm	<b>Lens:</b>	EF50mm f/1.4 USM	<b>Viewpoint 18: Mullaghclogha, Sperrin Mountains</b>
<b>Direction of view:</b>	94°	<b>Paper size:</b>	841 x 297 mm (half A1)	<b>Camera height:</b>	1.5 m	<b>Owenreagh/Craignagapple Wind Farm</b>
<b>Nearest turbine:</b>	11.53 km	<b>Correct printed image size:</b>	820 x 130 mm	<b>Date and time:</b>	30/08/2022 13:17	





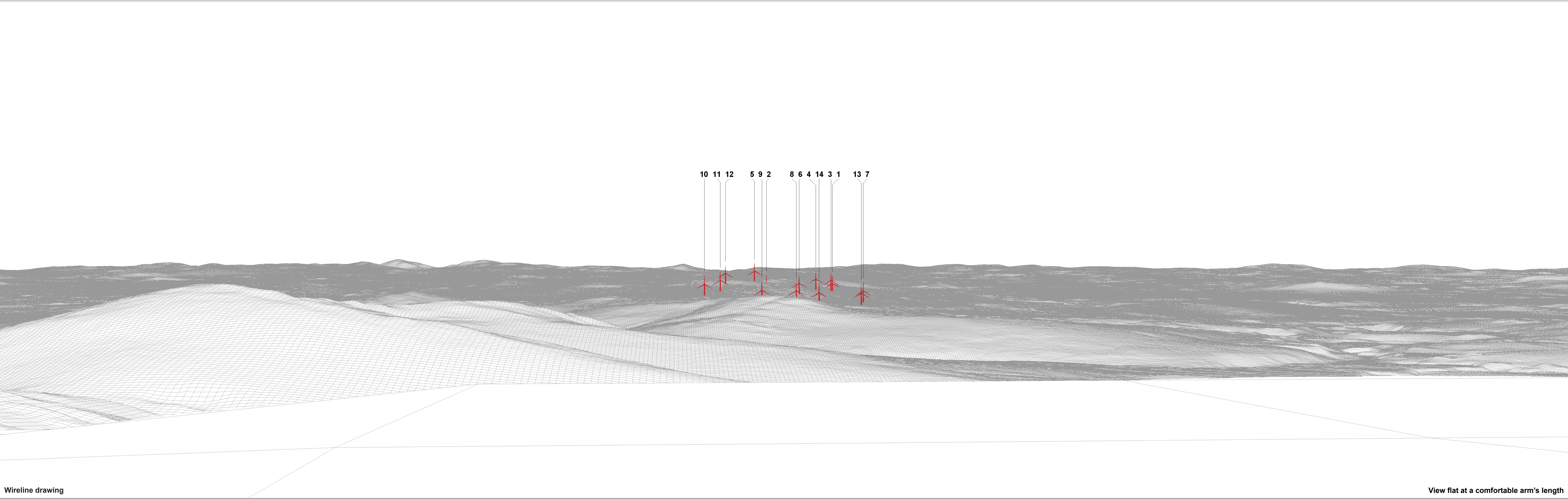
Baseline photograph

This image provides landscape and visual context only



OS reference:	255704 E 395693 N	Horizontal field of view:	90° (cylindrical projection)	Camera:	Canon EOS 6D	Figure 6.43e
Eye level:	633.6 mAOD	Principal distance:	522 mm	Lens:	EF50mm f/1.4 USM	Viewpoint 18: Mullaghclogha, Sperrin Mountains
Direction of view:	184°	Paper size:	841 x 297 mm (half A1)	Camera height:	1.5 m	Owenreagh/Craignagapple Wind Farm
Nearest turbine:	11.53 km	Correct printed image size:	820 x 130 mm	Date and time:	30/08/2022 13:17	







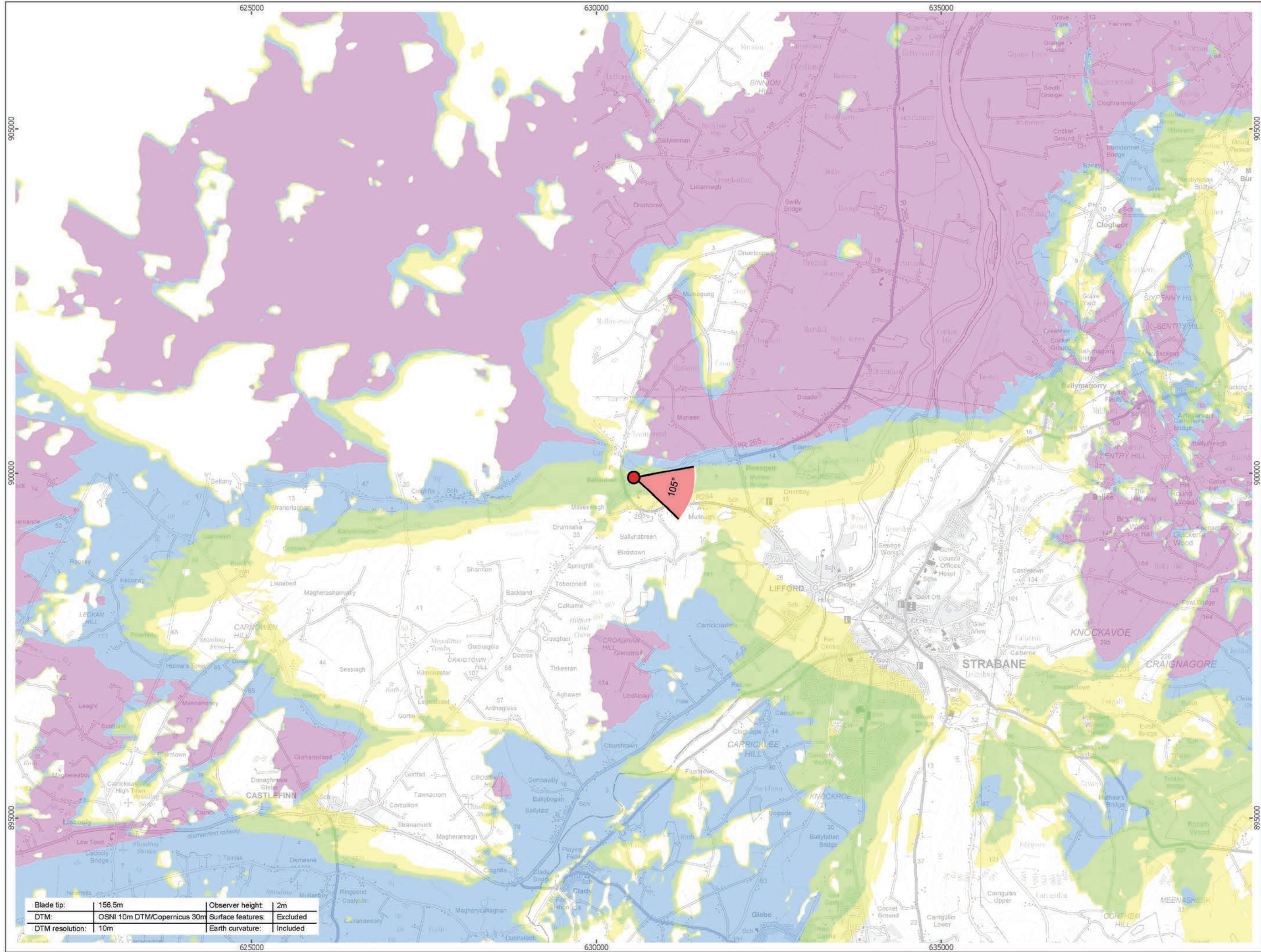
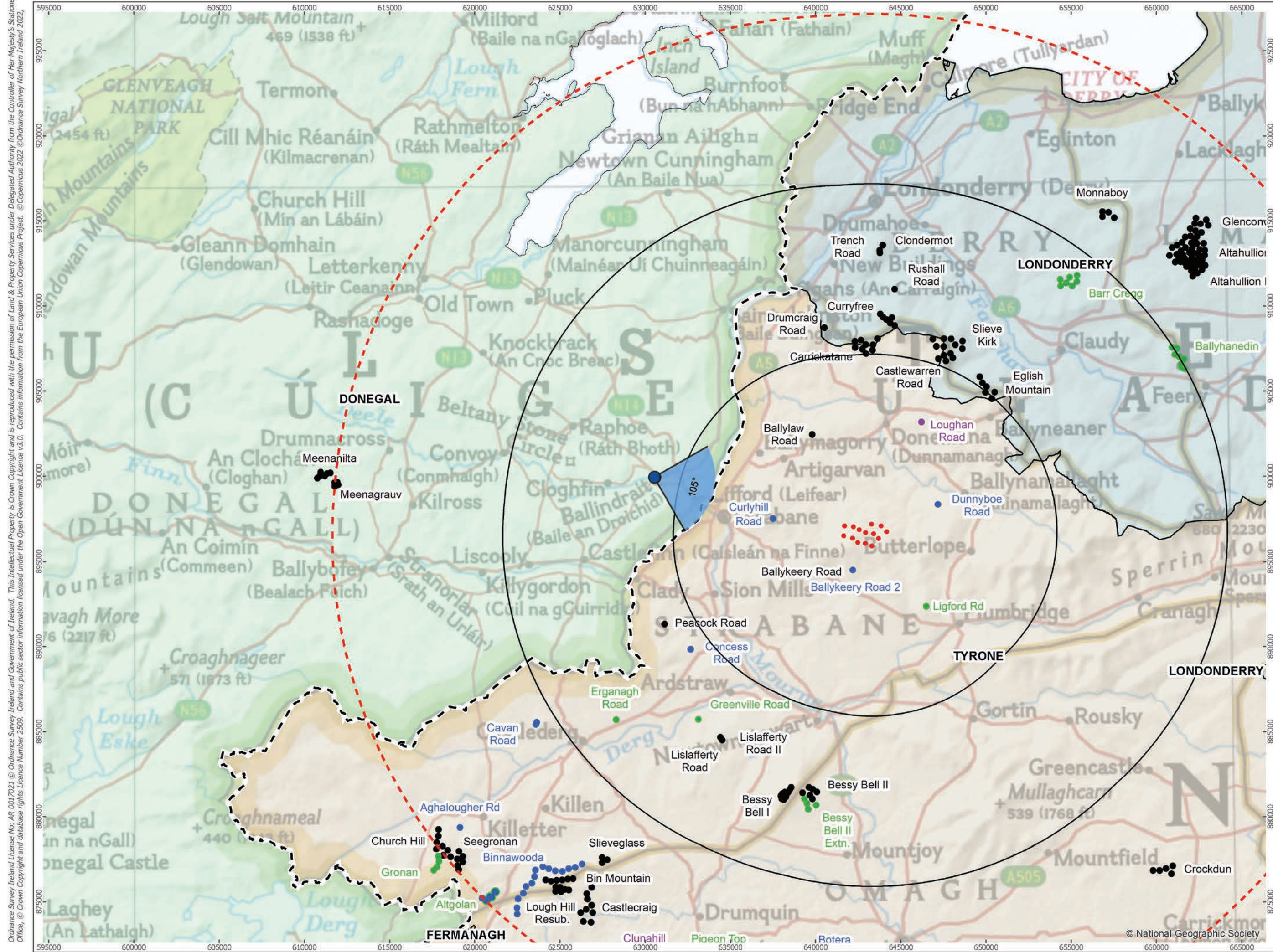


Photomontage: Proposed Development

View flat at a comfortable arm's length

<b>OS reference:</b>	255704 E 395693 N	<b>Horizontal field of view:</b>	53.5° (planar projection)	<b>Camera:</b>	Canon EOS 6D	<b>Figure 6.43g</b>
<b>Eye level:</b>	633.6 mAOD	<b>Principal distance:</b>	812.5 mm	<b>Lens:</b>	EF50mm f/1.4 USM	<b>Viewpoint 18: Mullaghclogha, Sperrin Mountains</b>
<b>Direction of view:</b>	274°	<b>Paper size:</b>	841 x 297 mm (half A1)	<b>Camera height:</b>	1.5 m	<b>Owenreagh/Craignagapple Wind Farm</b>
<b>Nearest turbine:</b>	11.53 km	<b>Correct printed image size:</b>	820 x 260 mm	<b>Date and time:</b>	30/08/2022 13:17	<small>Contains information from the European Union Copernicus Project. ©Copernicus 2023 ©Ordnance Survey Northern Ireland 2023, licensed under the Open Government Licence v3.0.</small>





open  
optimised environments  
PART OF SLR

Orsted  
ERM

90 Degree Field of View  
53.5 Degree Field of View

No. of Blade Tips Theoretically Visible

1 - 4
5 - 8
9 - 12
13 - 14

Proposed Wind Turbine

10km Radii  
30km Study Area

NI/RoI Boundary Line

DONEGAL  
FERMANAGH  
LONDONDERRY  
TYRONE

Cumulative Wind Farm Status:

- Operational
- Under Construction
- Consented
- Appeal; Application

1:50,000 Scale @ A3  
0 0.5 1 2 Km

Produced By: RH Ref:  
Checked By: JP Date: 22/03/2023

Viewpoint Plan  
Figure 6.44a  
VP19 - Ballindrait

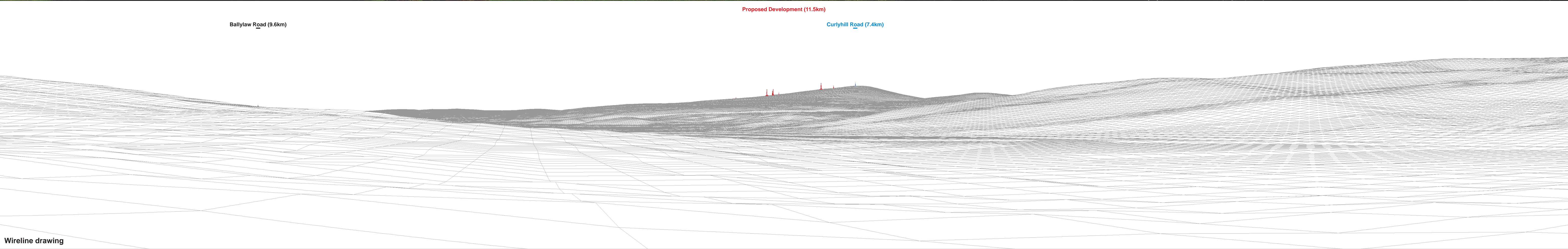
Owenreagh / Craignagapple  
Wind Farm  
Environmental Statement





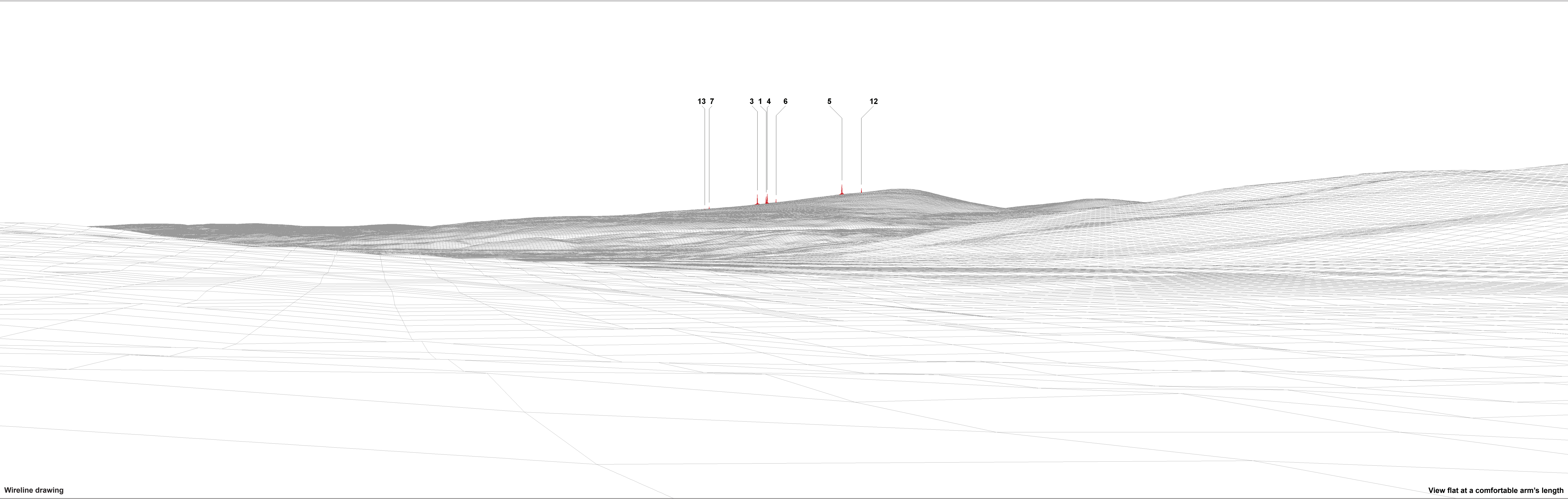
Baseline photograph

This image provides landscape and visual context only



Wireline drawing





Wireline drawing

View flat at a comfortable arm's length



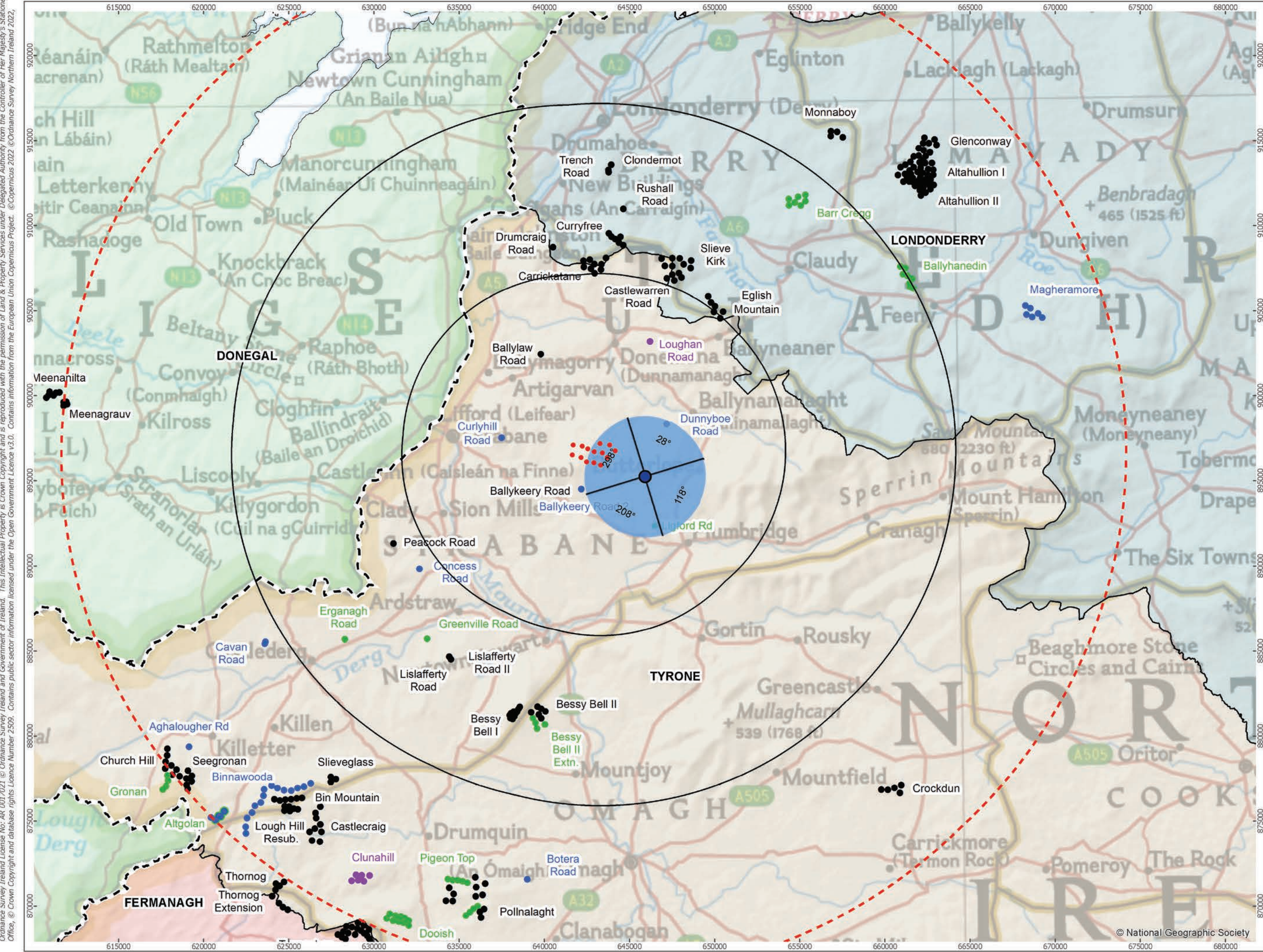


Photomontage: Proposed Development

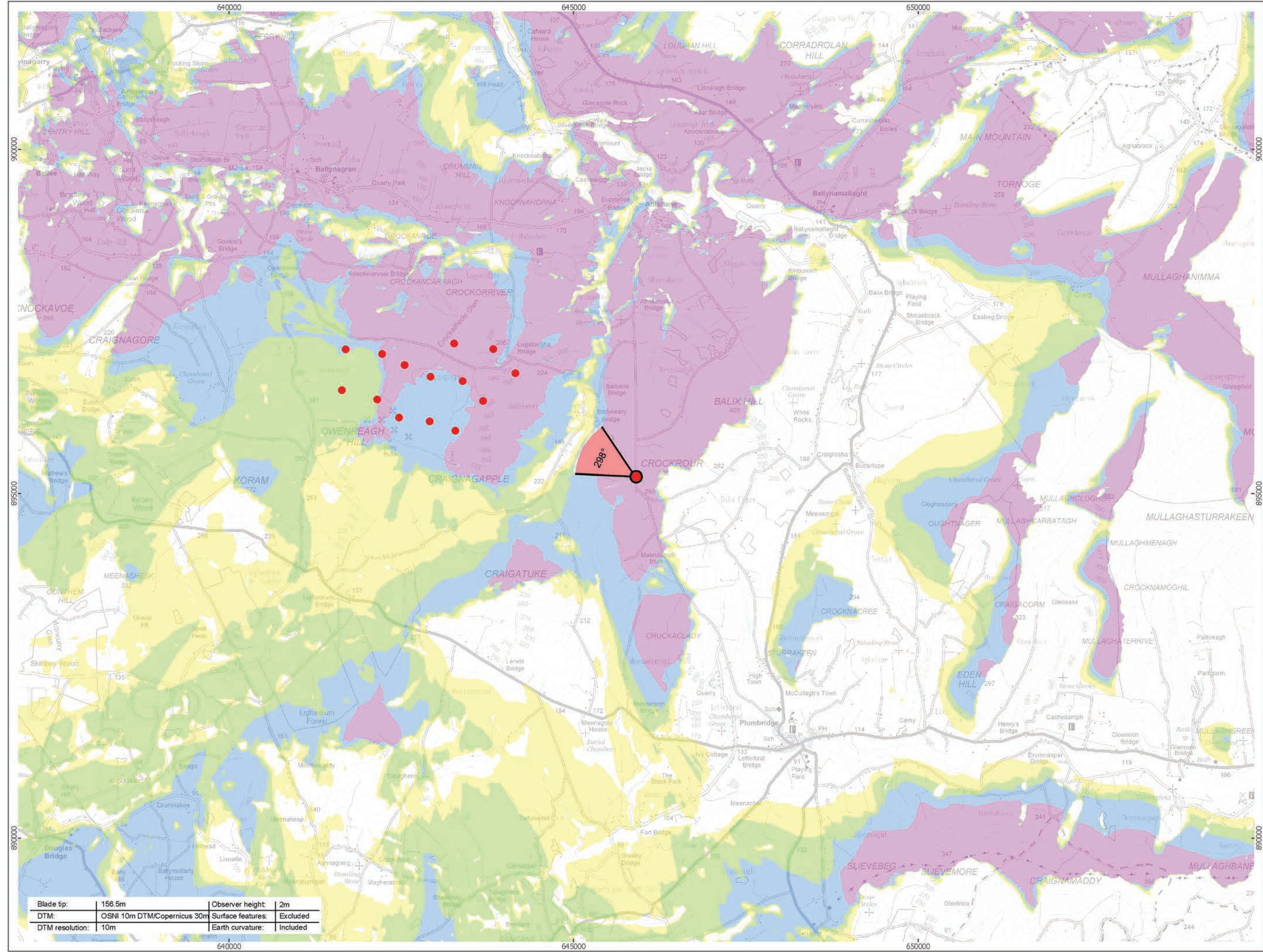
View flat at a comfortable arm's length

OS reference:	230599 E 399953 N	Horizontal field of view:	53.5° (planar projection)	Camera:	Canon EOS 5D Mark II	Figure 6.44d
Eye level:	11.2 mAOD	Principal distance:	812.5 mm	Lens:	EF50mm f/1.4 USM	Viewpoint 19: Ballindrait
Direction of view:	105°	Paper size:	841 x 297 mm (half A1)	Camera height:	1.5 m	Owenreagh/Craignagapple Wind Farm
Nearest turbine:	11.51 km	Correct printed image size:	820 x 260 mm	Date and time:	10/08/2022 14:09	Contains information from the European Union Copernicus Project. ©Copernicus 2023 ©Ordnance Survey Northern Ireland 2023, licensed under the Open Government Licence v3.0.





Viewpoint Location Plan Baseline Panorama (90 Degree View)  
Scale: 1:200,000



Viewpoint Location Plan (53.5 Degree View)  
Scale: 1:50,000

open

optimised environments

PART OF SLR

Orsted

ERM

90 Degree Field of View

53.5 Degree Field of View

No. of Blade Tips Theoretically Visible

1 - 4

5 - 8

9 - 12

13 - 14

Proposed Wind Turbine

10km Radii

30km Study Area

NI/RoI Boundary Line

DONEGAL

FERMANAGH

LONDONDERRY

TYRONE

Cumulative Wind Farm Status:

Operational

Under Construction

Consented

Appeal; Application

1:50,000

Scale @ A3

0 0.5 1 2 Km

NORTH

Produced By: RH

Ref:

Checked By: JP

Date: 22/03/2023

Viewpoint Plan

Figure 6.45a

VP20 - Meendamph Road, Crockrour

Owenreagh / Craignagapple

Wind Farm

Environmental Statement

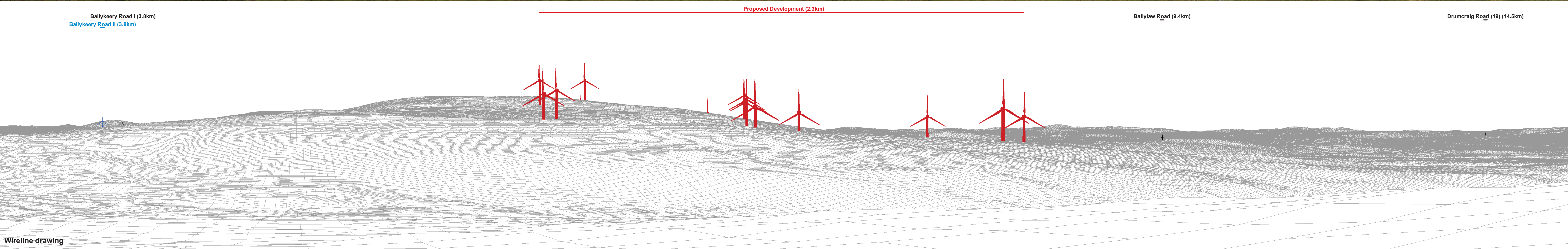
P:\2021\211591\_OwenVIA\GIS\211591\_OWEN\ES\211591\_OWEN\_ES\_Fig6-26\_to\_Fig6-50\_VP\_Plans.mxd





Baseline photograph

This image provides landscape and visual context only



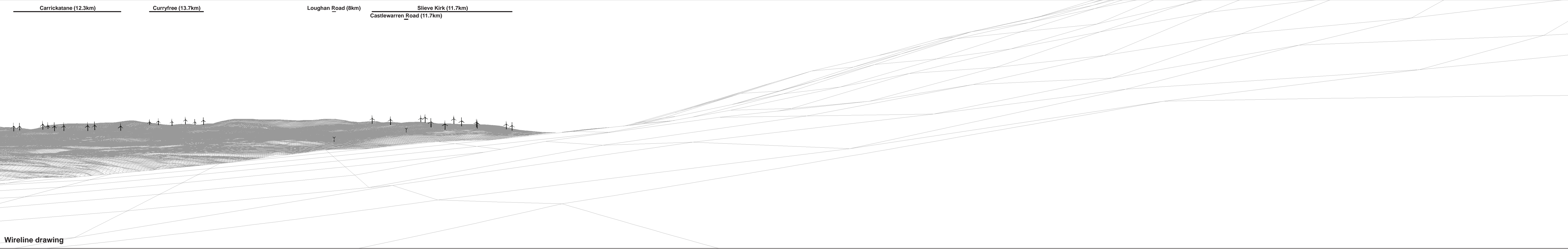
Wireline drawing





Baseline photograph

This image provides landscape and visual context only



Wireline drawing

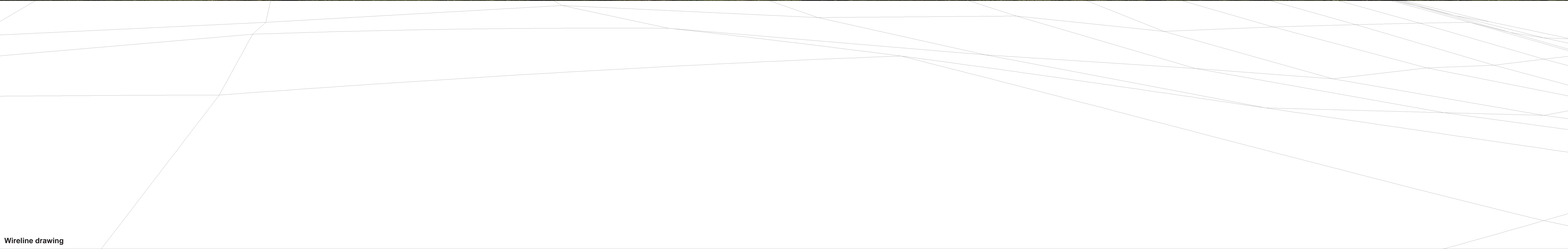
OS reference:	245967 E 395259 N	Horizontal field of view:	90° (cylindrical projection)	Camera:	Canon EOS 5D Mark II	Figure 6.45c
Eye level:	287.3 mAOD	Principal distance:	522 mm	Lens:	EF50mm f/1.4 USM	Viewpoint 20: Meendamp Road, Crockrour
Direction of view:	28°	Paper size:	841 x 297 mm (half A1)	Camera height:	1.5 m	Owenreagh/Craignagapple Wind Farm
Nearest turbine:	2.30 km	Correct printed image size:	820 x 130 mm	Date and time:	10/08/2022 10:19	





Baseline photograph

This image provides landscape and visual context only



Wireline drawing

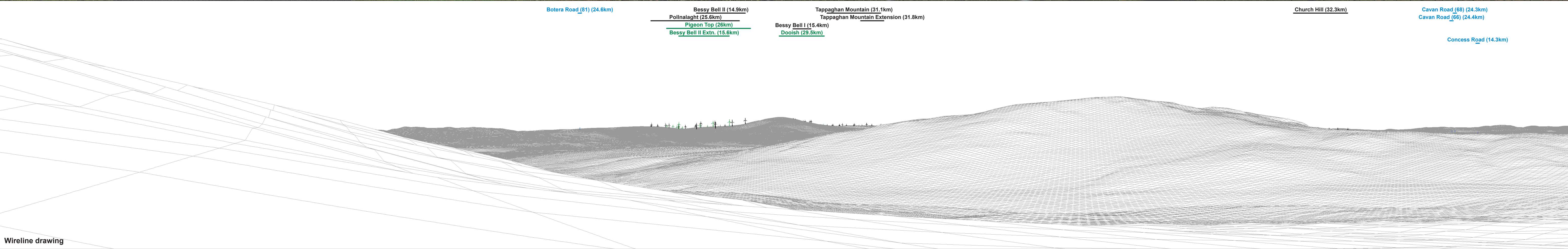
<b>OS reference:</b>	245967 E 395259 N	<b>Horizontal field of view:</b>	90° (cylindrical projection)	<b>Camera:</b>	Canon EOS 5D Mark II	<b>Figure 6.45d</b>
<b>Eye level:</b>	287.3 mAOD	<b>Principal distance:</b>	522 mm	<b>Lens:</b>	EF50mm f/1.4 USM	<b>Viewpoint 20: Meendamp Road, Crockrour</b>
<b>Direction of view:</b>	118°	<b>Paper size:</b>	841 x 297 mm (half A1)	<b>Camera height:</b>	1.5 m	<b>Owenreagh/Craignagapple Wind Farm</b>
<b>Nearest turbine:</b>	2.30 km	<b>Correct printed image size:</b>	820 x 130 mm	<b>Date and time:</b>	10/08/2022 10:19	





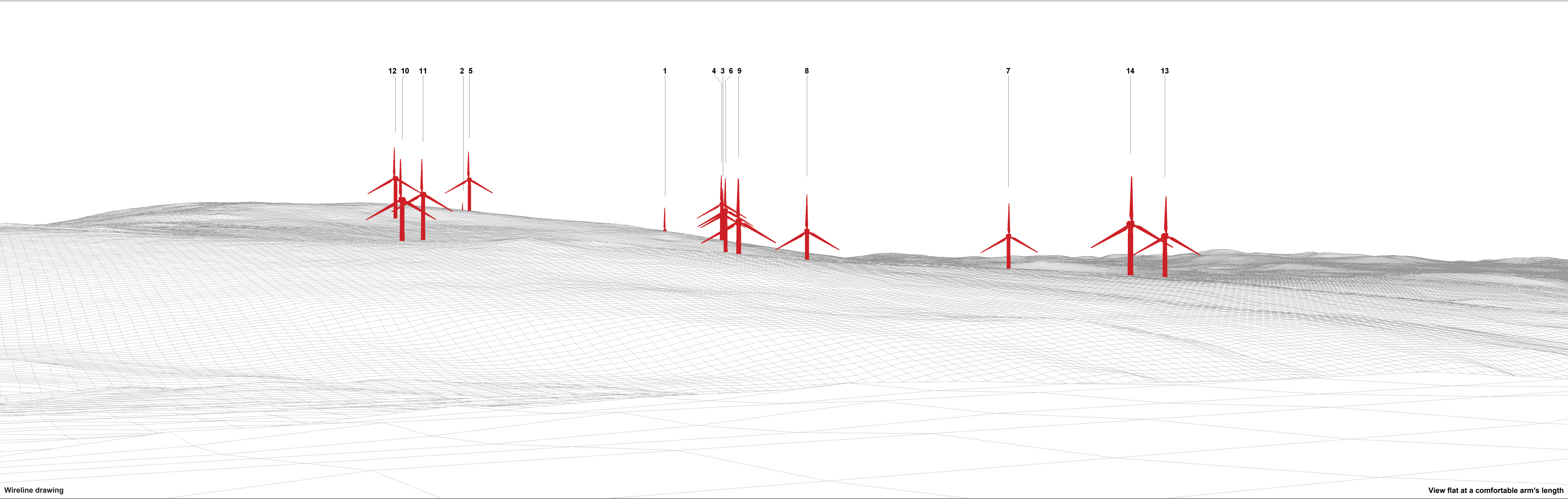
Baseline photograph

This image provides landscape and visual context only



Wireline drawing





Wireline drawing

View flat at a comfortable arm's length

OS reference:	245967 E 395259 N	Horizontal field of view:	53.5° (planar projection)	Camera:	Canon EOS 5D Mark II
Eye level:	287.3 mAOD	Principal distance:	812.5 mm	Lens:	EF50mm f/1.4 USM
Direction of view:	298°	Paper size:	841 x 297 mm (half A1)	Camera height:	1.5 m
Nearest turbine:	2.30 km	Correct printed image size:	820 x 260 mm	Date and time:	10/08/2022 10:19

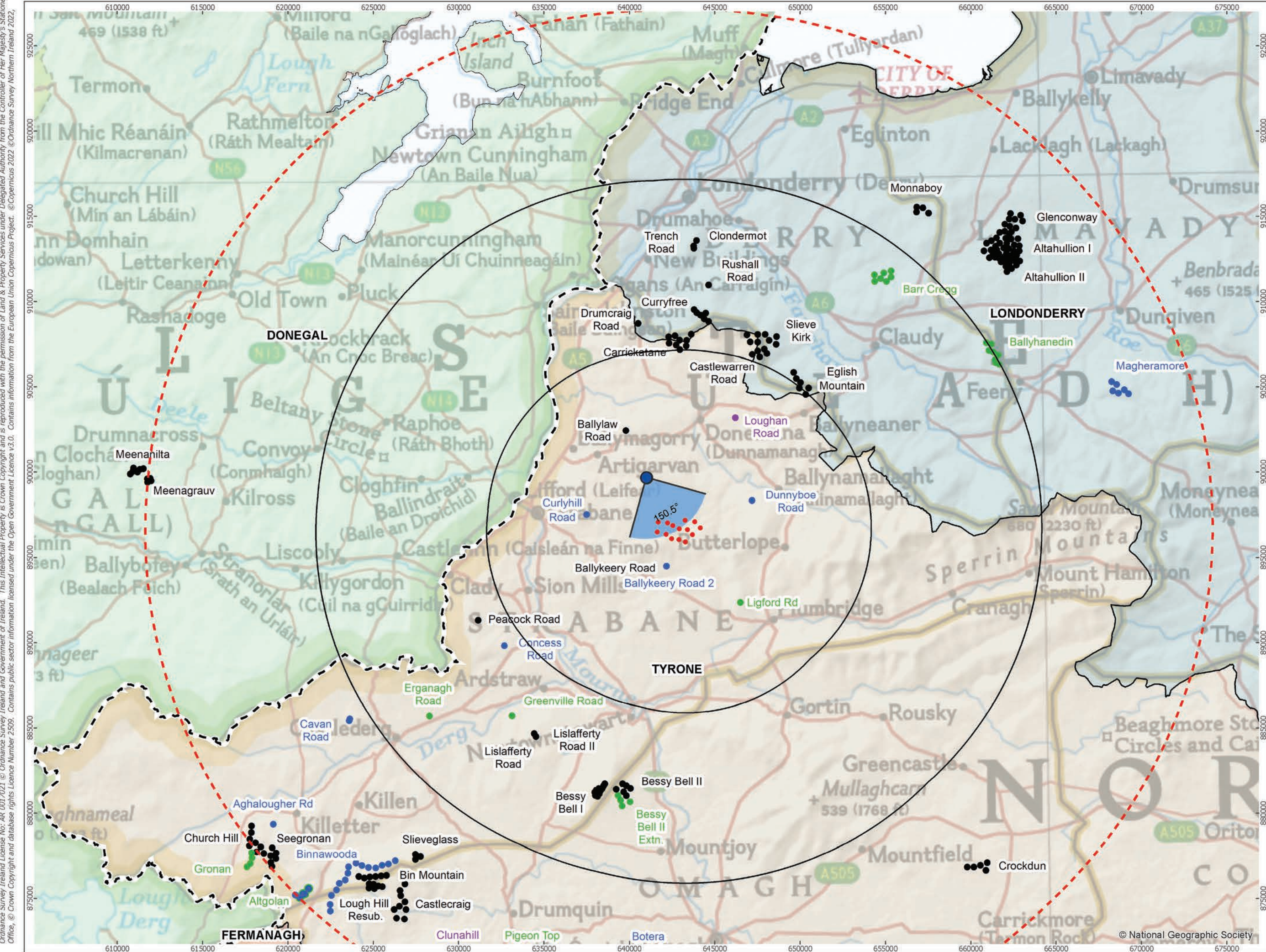
Figure 6.45f  
Viewpoint 20: Meendamp Road, Crockrour

Owenreagh/Craignagapple Wind Farm

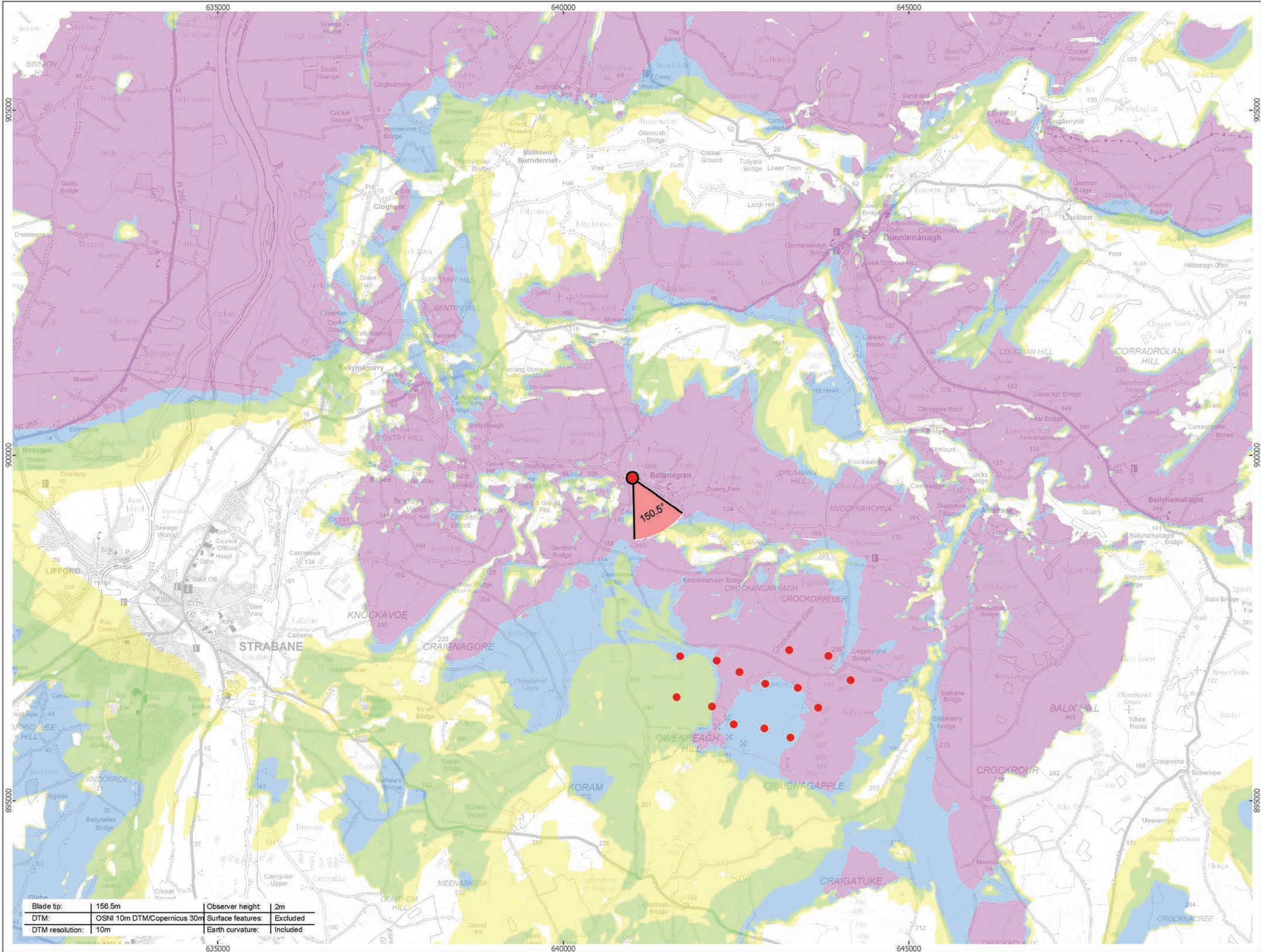








Viewpoint Location Plan Baseline Panorama (90 Degree View)  
Scale: 1:200,000



Viewpoint Location Plan (53.5 Degree View)  
Scale: 1:50,000

P:\2021\211591\_OwenVIA\GIS\211591\_OWEN\ES\211591\_OWEN\_ES\_Fig6-26\_to\_Fig6-50\_VP\_Plans.mxd

optimised environments  
PART OF SLR

ERM

90 Degree Field of View

53.5 Degree Field of View

No. of Blade Tips Theoretically Visible

- 1 - 4
- 5 - 8
- 9 - 12
- 13 - 14

Proposed Wind Turbine

10km Radii

30km Study Area

NI/RoI Boundary Line

DONEGAL

FERMANAGH

LONDONDERRY

TYRONE

Cumulative Wind Farm Status:

- Operational
- Under Construction
- Consented
- Appeal; Application

1:50,000 Scale @ A3

0 0.5 1 2 Km

Produced By: RH Ref:

Checked By: JP Date: 22/03/2023

Viewpoint Plan  
Figure 6.46a  
VP21 - Glenmoran

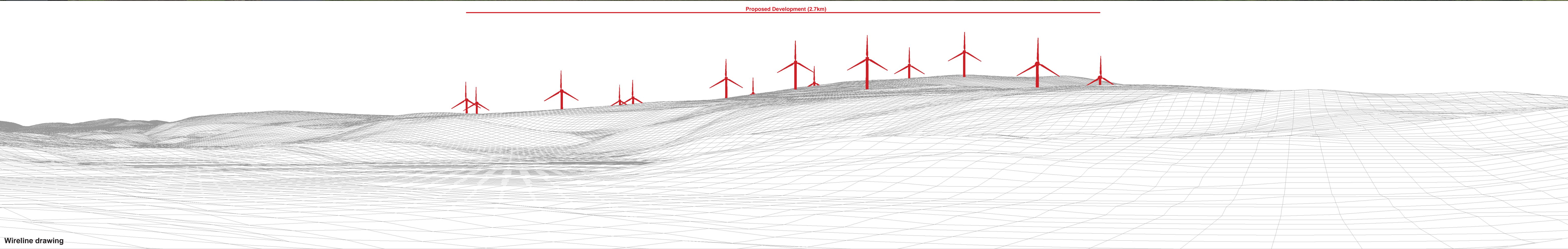
Owenreagh / Craignagapple  
Wind Farm  
Environmental Statement





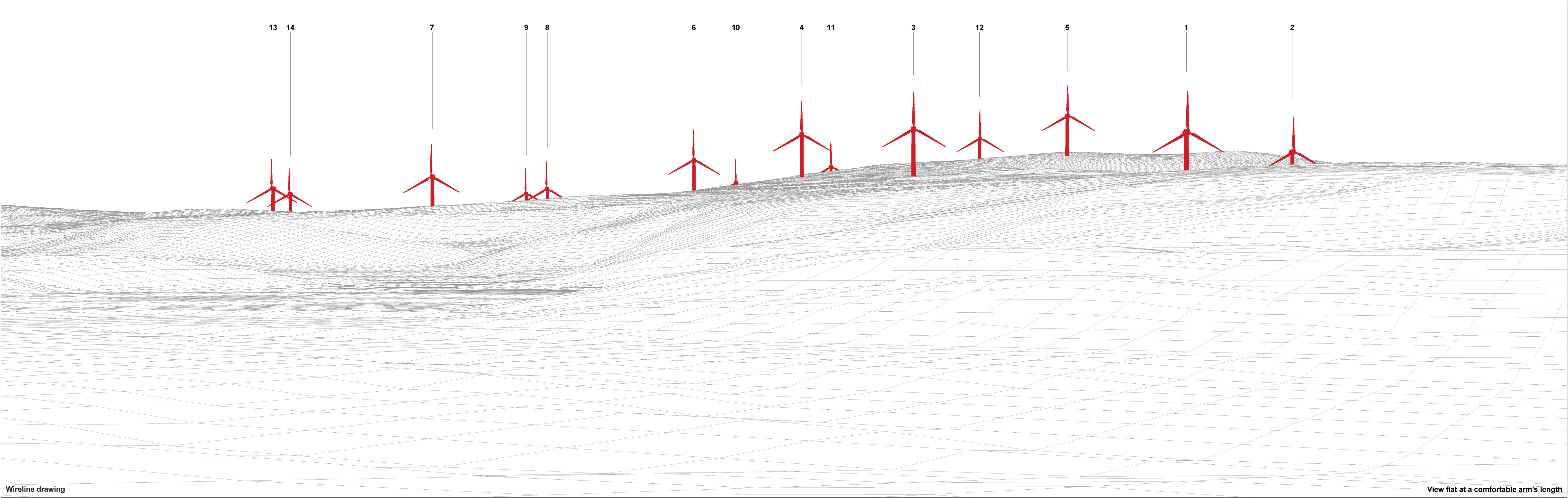
Baseline photograph

This image provides landscape and visual context only



Wireline drawing









Photomontage: Proposed Development

View flat at a comfortable arm's length

OS reference:	241057 E 399689 N	Horizontal field of view:	53.5° (planar projection)	Camera:	Canon EOS 6D Mark II
Eye level:	100.5 mAOD	Principal distance:	812.5 mm	Lens:	EF50mm f/1.4 USM
Direction of view:	150.5°	Paper size:	841 x 297 mm (half A1)	Camera height:	1.5 m
Nearest turbine:	2.68 km	Correct printed image size:	820 x 260 mm	Date and time:	01/07/2021 14:28