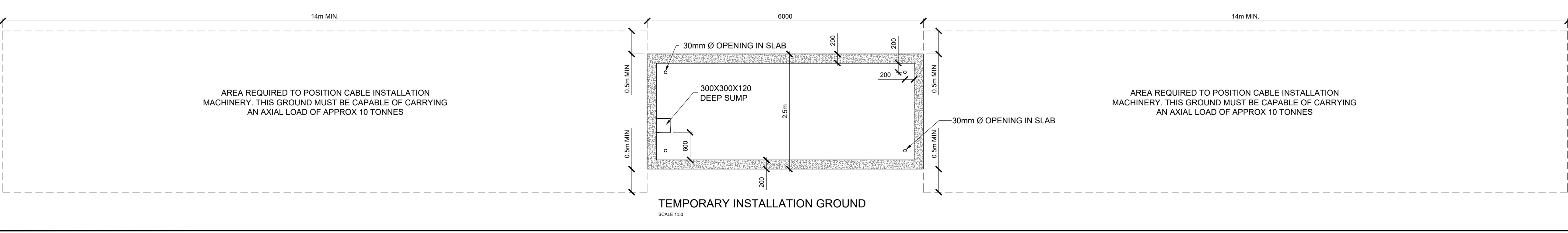
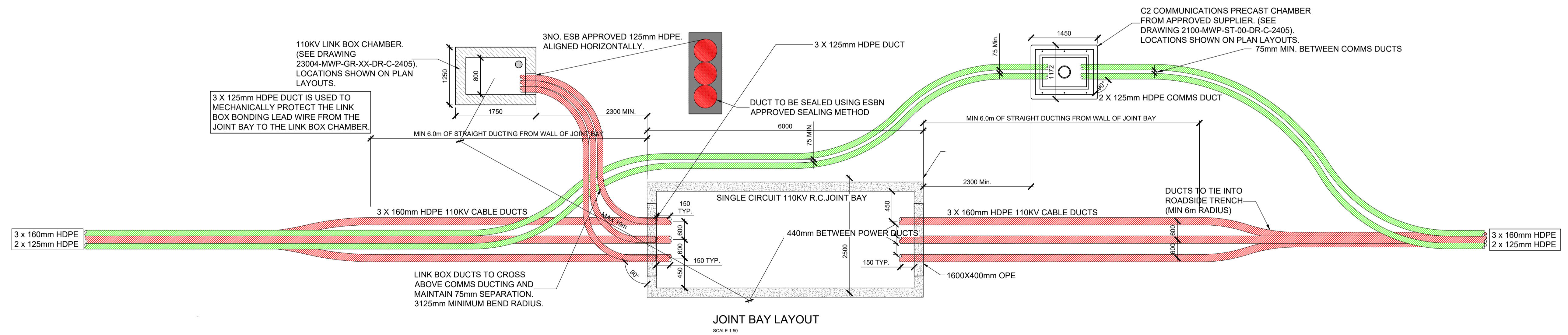
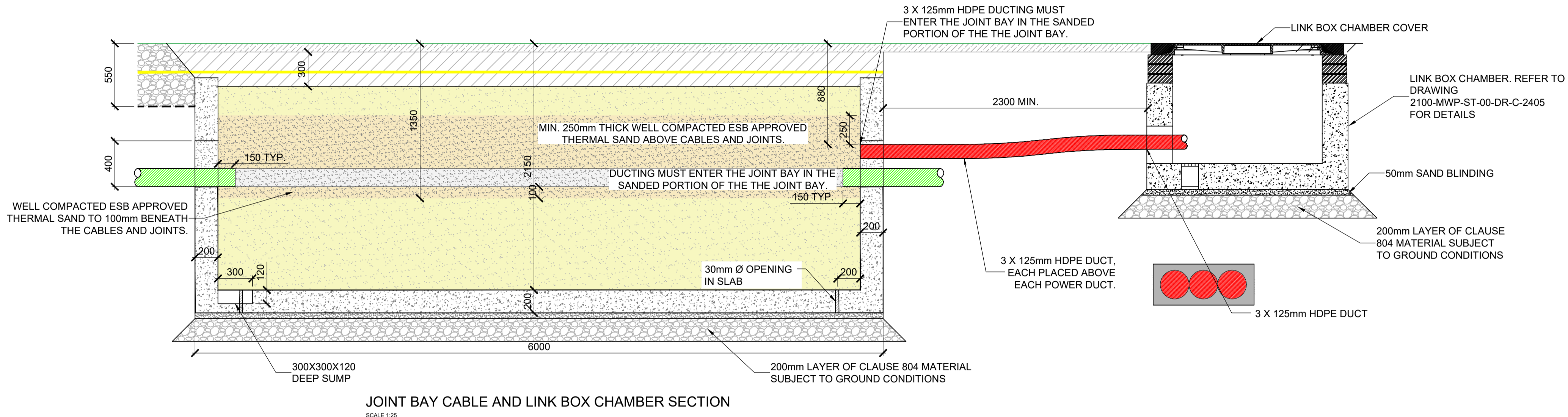
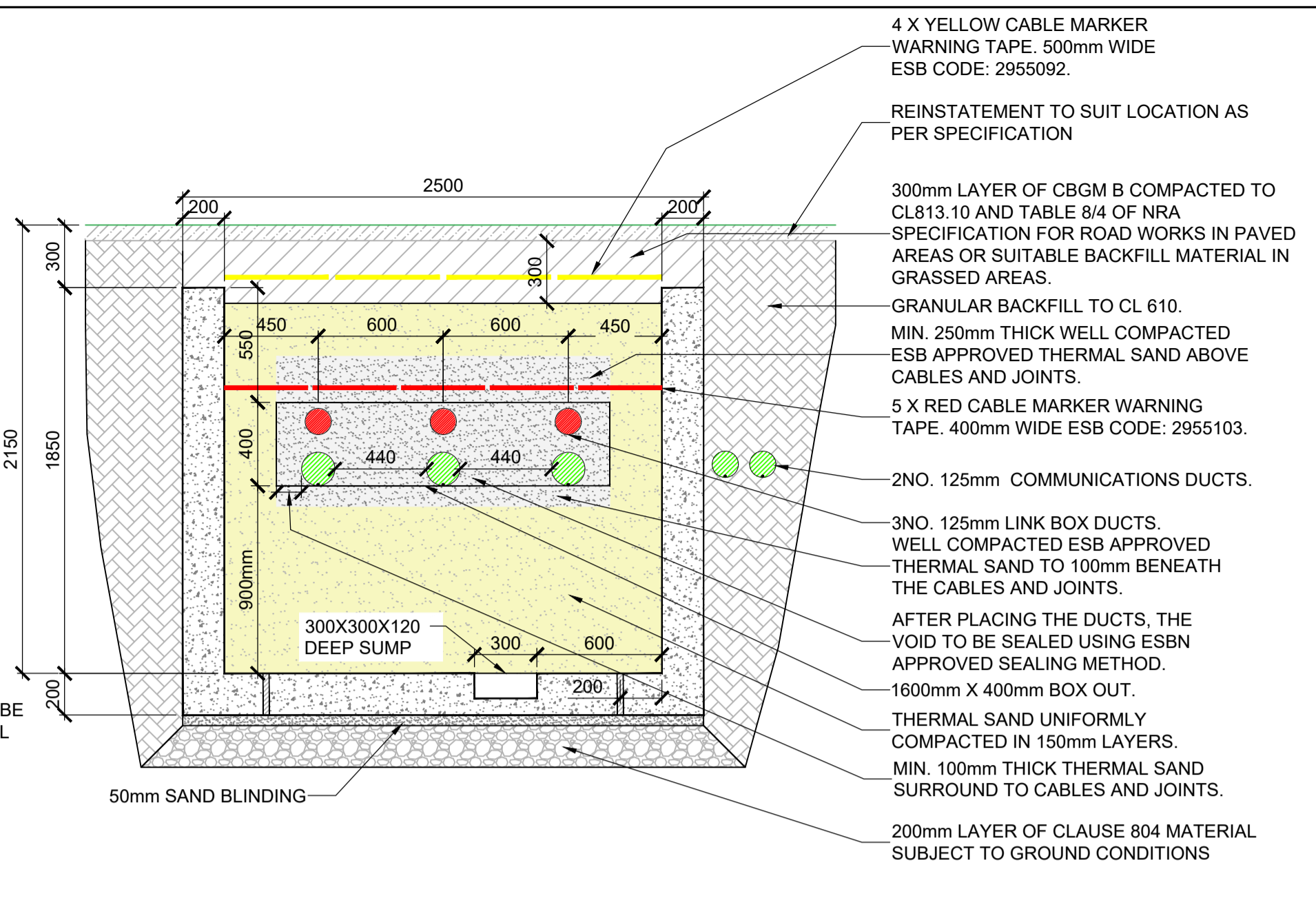
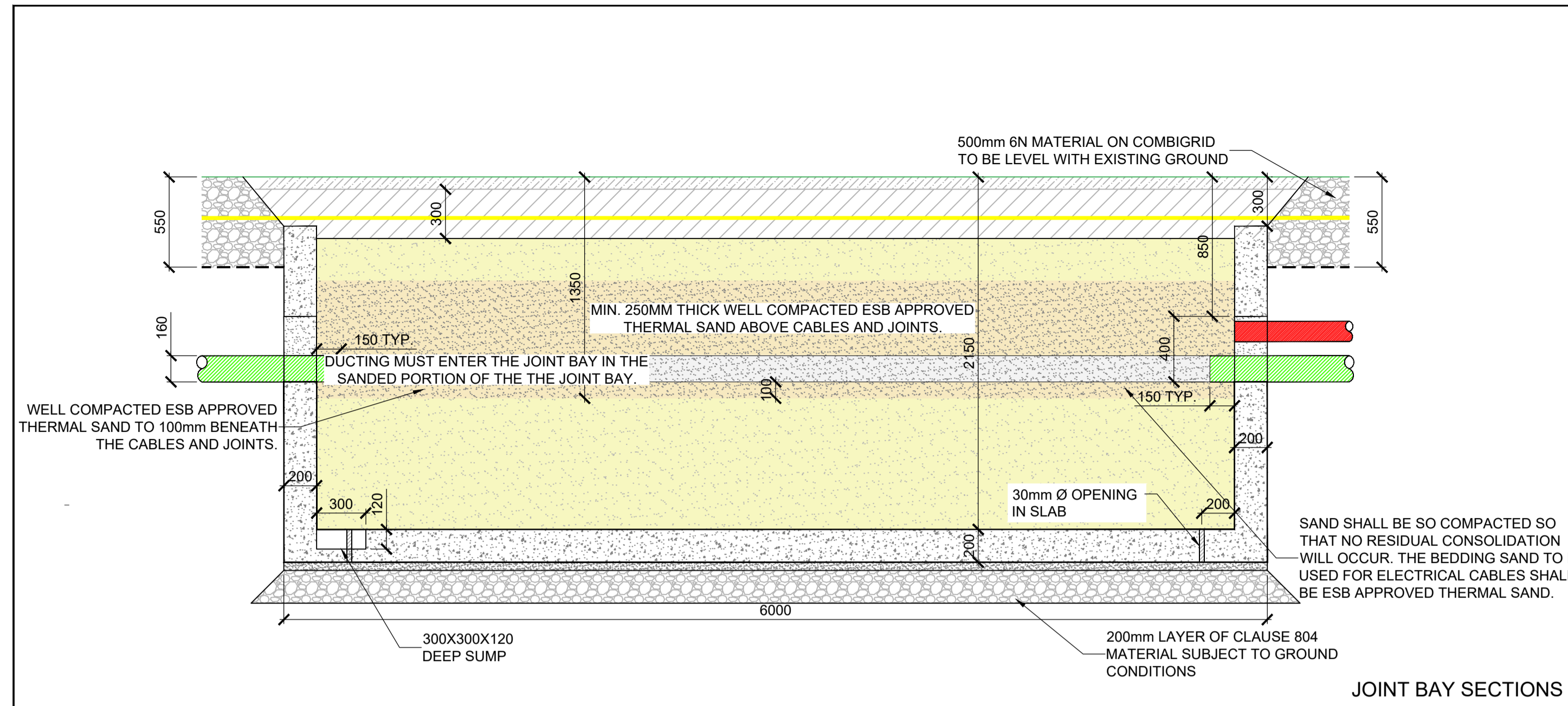



DO NOT SCALE FROM THIS DRAWING. USE FIGURED DIMENSIONS IN ALL CASES. VERIFY DIMENSIONS ON SITE AND REPORT ANY DISCREPANCIES TO THE DESIGNERS IMMEDIATELY.  
 THIS DRAWING IS TO BE READ IN CONJUNCTION WITH THE DESIGNERS SPECIFICATION.  
 © THIS DRAWING IS COPYRIGHT AND MAY ONLY BE REPRODUCED WITH THE DESIGNERS PERMISSION.

- NOTES:**
- ALL DRAWINGS ARE TO BE READ IN CONJUNCTION WITH ALL RELEVANT SPECIFICATIONS, BILLS OF QUANTITIES, ARCHITECTURAL, SERVICES AND ENGINEERING DRAWINGS.
  - ALL LEVELS ARE IN METRES RELATED TO ORDNANCE DATUM MALIN HEAD.
  - ANY DISCREPANCIES BETWEEN THESE DOCUMENTS SHALL BE BROUGHT TO THE ATTENTION OF THE ENGINEER.
  - DRAWINGS ARE NOT TO BE SCALED.
  - ALL DIMENSIONS ARE IN MILLIMETRES, UNLESS NOTED OTHERWISE.
  - THE CONTRACTOR SHALL CHECK ALL DIMENSIONS PRIOR TO CONSTRUCTION. ANY DISCREPANCIES TO BE NOTIFIED TO THIS OFFICE IN WRITING IMMEDIATELY. ANY DISCREPANCIES BETWEEN THESE DOCUMENTS SHALL BE BROUGHT TO THE ATTENTION OF THE ENGINEER.
  - SAND SHALL BE NATURAL UNWASHED SAND IN ACCORDANCE WITH BS 882:1992 (BS EN 12620) COMPLYING WITH GRADING LIMIT C IN TABLE 4 WITH A MAXIMUM THERMAL RESISTIVITY OF 1.0 K.m/WATT AT 0% MOISTURE CONTENT.
  - ALL MATERIALS AND WORKMANSHIP TO BE IN ACCORDANCE WITH THE NRA SPECIFICATION FOR ROADWORKS.
  - TEMPORARY WORKS DESIGN CERTIFICATE REQUIREMENTS FOR CABLE ROUTE. ALL TEMPORARY WORKS ARE THE RESPONSIBILITY OF THE CONTRACTOR. HE SHALL PROCURE A TWDC AS REQUIRED BASED ON HIS PROPOSED WORKS METHODOLOGY. ON THE ASSUMPTION THAT BATTERING OF EXCAVATIONS WILL NOT OCCUR THEN A TWDC WILL BE REQUIRED FOR ALL TRENCH EXCAVATIONS. TWDCS WILL ALSO BE REQUIRED FOR THE USE OF TRENCH BOXES.
  - CONCRETE REQUIREMENTS JOINT BAYS  
 EXPOSURE CLASS XC2  
 MINIMUM CEMENT CONTENT 280 kg/m<sup>3</sup>.  
 WATER/CEMENT RATIO 0.60  
 CEMENT TYPE TO IS EN 197-1:  
 ONLY CEMENTS AND CEMENT COMBINATIONS IN THIS SPECIFICATION MAY BE USED.  
 MINIMUM AIR CONTENT N/A  
 CHLORIDE CONTENT CLASS:  
 C40  
 MAX AGGREGATE (mm): 20  
 COVER (mm) 40  
 COMPRESSIVE STRENGTH CLASS C30/37
  - PRECAST JOINT BAYS TO BE USED



P01	15.11.24	Issued For Planning	JK	PC
REV	DATE	DESCRIPTION	BY	APP
PROJECT:				
Brittas Wind Farm				
TITLE:				
110kV Joint Bay General Arrangement and Details				
CLIENT:				
Brittas Wind Farm Ltd.				
 <b>MWP</b> ENGINEERING AND ENVIRONMENTAL CONSULTANTS CORK   TRALEE   LONDON   LIMERICK mwp.ie				
DRAWN:	JK	CHECKED:	CMcL	APPROVED:
PROJECT NUMBER:	23318	DATE:	June 2024	SCALE @ A1:
STATUS DESCRIPTION:	FOR INFORMATION			STATUS:
DRAWING NUMBER:	23318 - MWP - 00 - 00 - DR - C - 5428			REV:
				P01