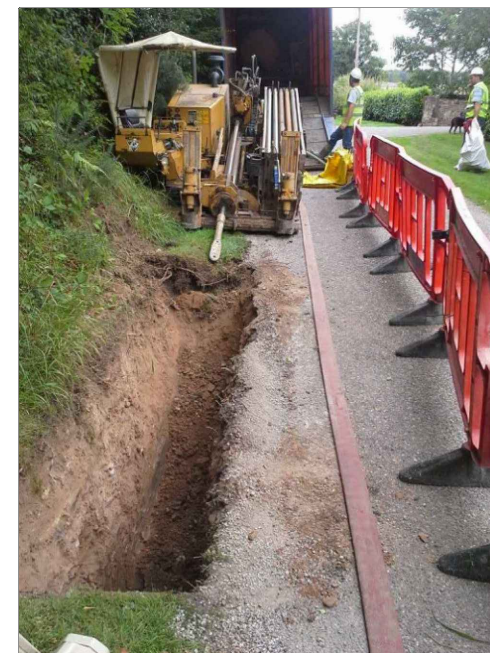
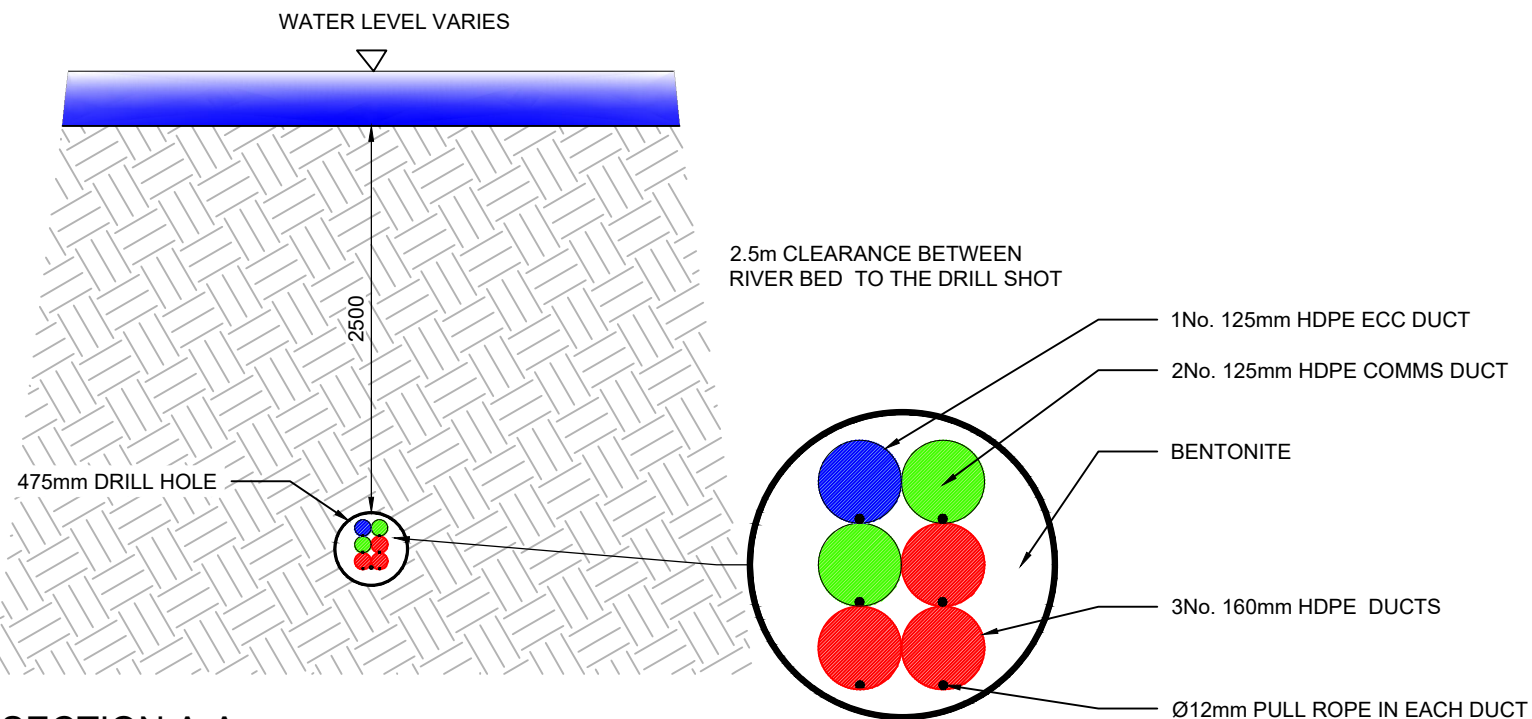


**DIRECTIONAL DRILL UNDER BRIDGE / CULVERT CROSSING**  
SCALE 1:100

Final design of cable will be up to 110kV specification.  
Final specification to be confirmed at construction stage.



**DRILLING RIG/LAUNCH PIT**



**DIRECTIONAL DRILLING RIG**

**SECTION A-A**  
SCALE 1:50

P01	15.11.24	Issued For Planning	JK	PC	
REV	DATE	DESCRIPTION	BY	APP	
Brittas Wind Farm Ltd.					

**MWP**  
ENGINEERING AND ENVIRONMENTAL CONSULTANTS  
CORK | TRALEE | LONDON | LIMERICK  
mwp.ie

PROJECT:	Brittas Wind Farm
	110kV Cable Trench Watercourse Crossing Details Directional Drill Under Existing Bridge

DRAWN:	CHECKED:	APPROVED:
JK	CMcL	PC
PROJECT NUMBER:	DATE:	SCALE @ A3:
23318	June 2024	As Shown
STATUS DESCRIPTION		STATUS:
FOR INFORMATION		S2
DRAWING NUMBER:		REV:
23318 - MWP - 00 - 00 - DR - C - 5429		P01