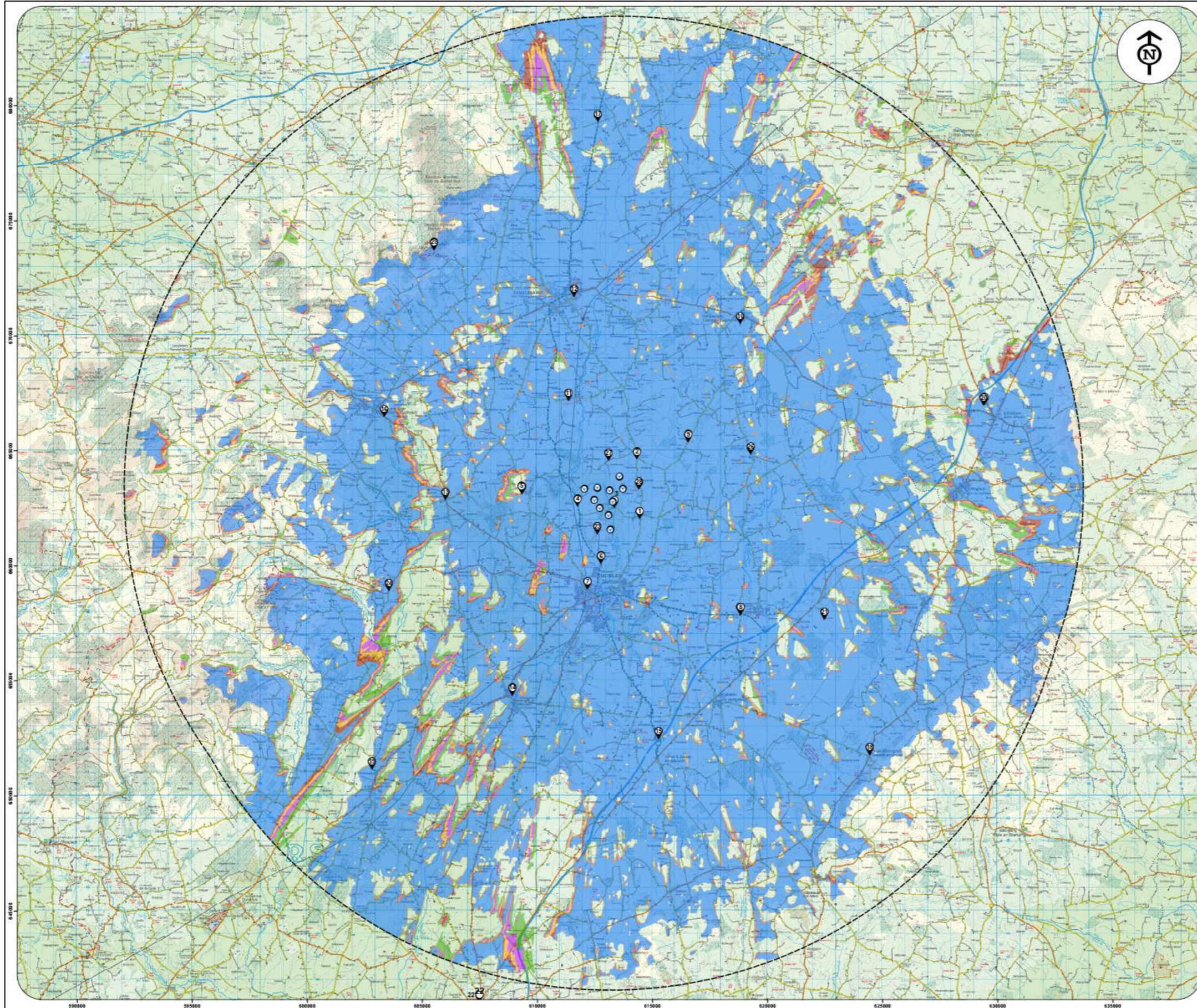


Appendix 15A
**MAP OF ZONE OF THEORETICAL VISIBILITY TO HUB
HEIGHT**



Zone of Theoretical Visibility (ZTV) Map indicating areas with a theoretical view of the proposed Brittas turbines

Calculated to Hub Height (105m)

Proposed Brittas Turbines



No. Brittas Turbines Visible

- 1 - 2
- 3 - 4
- 5 - 6
- 7 - 8
- 9 - 10

Photomontage Locations



Brittas Turbines 20km Extent



FINAL

Date: 5th May 2024

Scale when printed at A1 Size = 1:75,000

1 centimeter = 750 meters

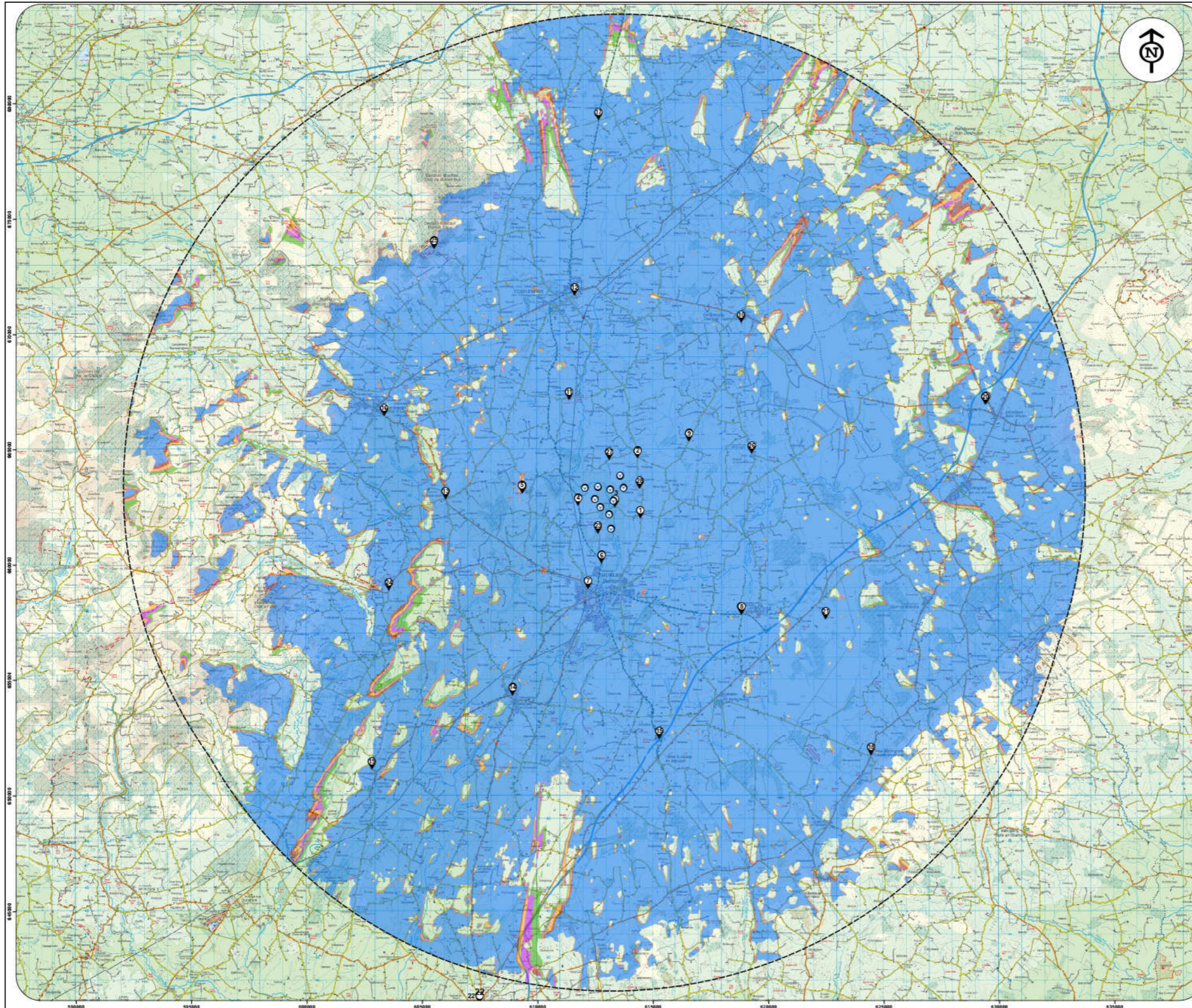
Notes:

- Theoretical visibility is based on an observer being able to see at least a full turbine blade.
- Theoretical visibility is based on an observer eye level of 2m above ground level.
- Calculation does not account for screening due to vegetation, forestry, buildings or any other similar forms of screening.
- Calculation has been run using Ordnance Survey 10m DTM height data.
- Earth curvature and light refraction has been included in this calculation.



Appendix 15B

MAP OF ZONE OF THEORETICAL VISIBILITY TO TIP HEIGHT



Zone of Theoretical Visibility (ZTV) Map indicating areas with a theoretical view of the proposed Brittas turbines

Calculated to Blade Tip Height (180m)

Proposed Brittas Turbines



No. Brittas Turbines Visible

1 - 2

3 - 4

5 - 6

7 - 8

9 - 10

Photomontage Locations



Brittas Turbines 20km Extent



FINAL

Date: 5th May 2024

Scale when printed at A1 Size = 1:75,000

1 centimeter = 750 meters

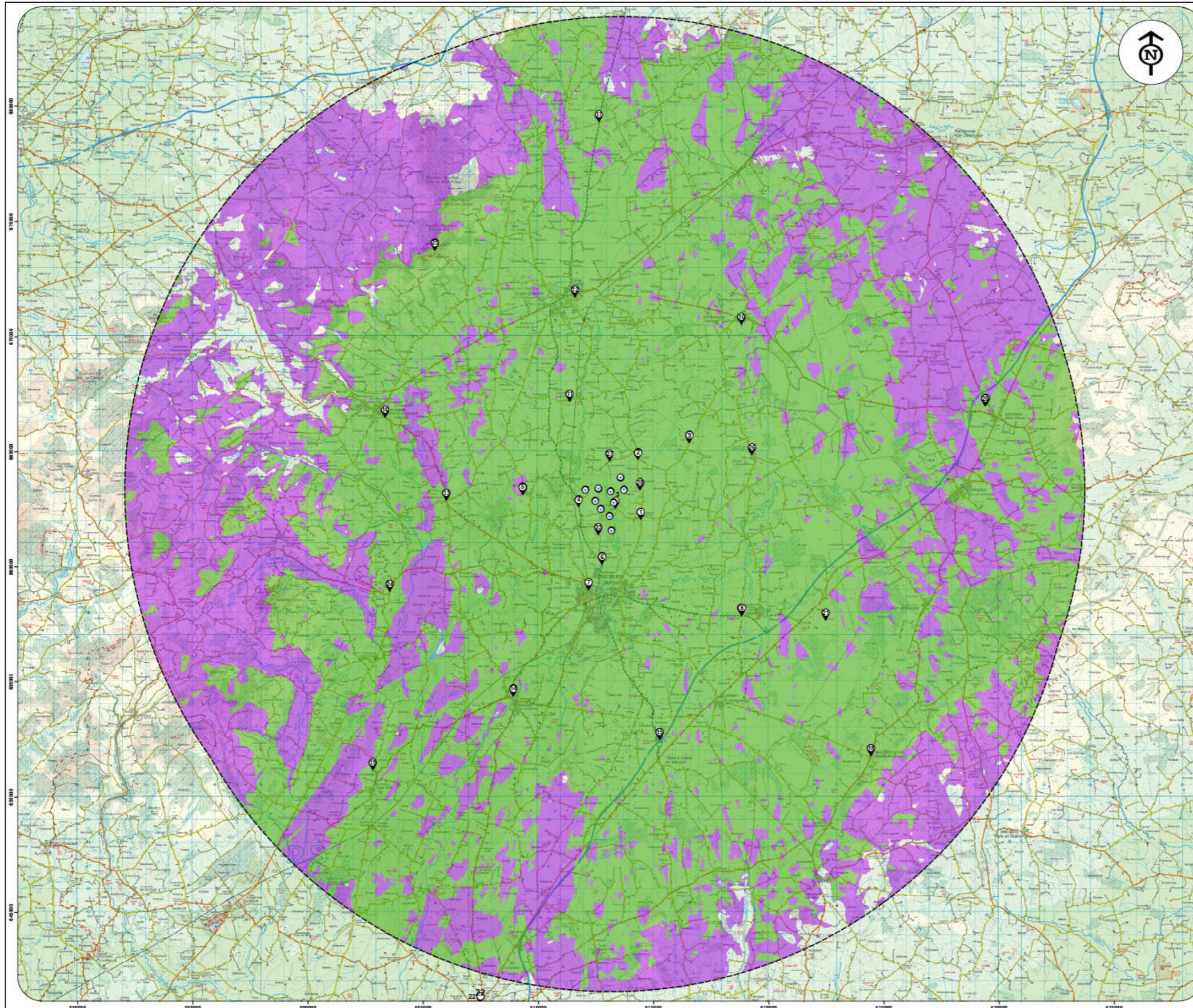
Notes:

- Theoretical visibility is based on an observer being able to see at least a turbine blade tip.
- Theoretical visibility is based on an observer eye level of 2m above ground level.
- Calculation does not account for screening due to vegetation, forestry, buildings or any other similar forms of screening.
- Calculation has been run using Ordnance Survey 10m DTM height data.
- Earth curvature and light refraction has been included in this calculation.



Appendix 15C

MAP OF CUMULATIVE HUB HEIGHT ZONE OF THEORETICAL VISIBILITY



Zone of Theoretical Visibility (ZTV) Map indicating areas with a theoretical view of the proposed Brittas turbines in addition to all other permitted, in planning and operational wind farms within the study area

Calculated to Hub Height

- Proposed Brittas Turbines
- Wind Farms Visible
 - Brittas Only
 - Cumulative Only
 - Brittas & Cumulative
- Photomontage Locations
- Brittas Turbines 20km Extent

FINAL
Date: 5th May 2024
Scale when printed at A1 Size = 1:75,000
1 centimeter = 750 meters

- Notes:
- Theoretical visibility is based on an observer being able to see at least a full turbine blade.
 - Theoretical visibility is based on an observer eye level of 2m above ground level.
 - Calculation does not account for screening due to vegetation, forestry, buildings or any other similar forms of screening.
 - Calculation has been run using Ordnance Survey 10m DTM height data.
 - Earth curvature and light refraction has been included in this calculation.

