

Moor Vannin
Offshore Wind Farm

Community Consultation Have Your Say

Co-choyrle Heayagh
Caa dy chur y barel ayds



Orsted

Welcome to the Community Consultation for the Moor Vannin Offshore Wind Farm

Thank you for joining us today to learn more about our project proposals.

We have a series of information boards for you to read as well as project team members for you to ask any questions of and share your feedback.

We welcome everyone's views to help us shape the Moor Vannin Offshore Wind Farm. You can provide feedback in the following ways:



Visit our Consultation portal:
moirvannin.commonplace.is



Complete a feedback form and post it in the box at the entrance to this venue.



Send an email to
moirvannin@orsted.com



Write a letter to Ørsted, The Old Courthouse,
Athol Street, Douglas, Isle of Man, IM1 1LD.

An Introduction to Ørsted

Ørsted is a renewable energy company that takes tangible action to create a world that runs entirely on green energy.

Over the past 30 years, we have established our company as the global leader in offshore wind. Since pioneering the world's first offshore wind farm in 1991, we've built more wind farms at sea than any other company. In the UK and Ireland region we have our largest footprint, with eight offshore wind farms in the Irish Sea alone. In the North Sea, our projects include the world's largest offshore wind farm, Hornsea 2. We have installed 8.9 GW of offshore wind farms globally, enough to power approximately 9 million homes.

We have achieved all this in collaboration with local communities, sharing with them the benefits of this green energy transition. Building on over 30 years of experience, our ambition is to have installed 20-22 GW of offshore wind power worldwide by 2030.



Introducing the Moor Vannin Project

We're working with the Isle of Man Government to develop the Island's first wind farm offshore and usher in the long-term benefits of the green energy transition.

The name Moor Vannin comes from the Manx language term for the Irish Sea – and literally translates as the 'sea of the Isle of Man'. This is fitting as we bring forward these plans for the first large scale development in the Isle of Man's territorial waters, off the coast of Maughold Head.

Name: Moor Vannin Offshore Wind Farm

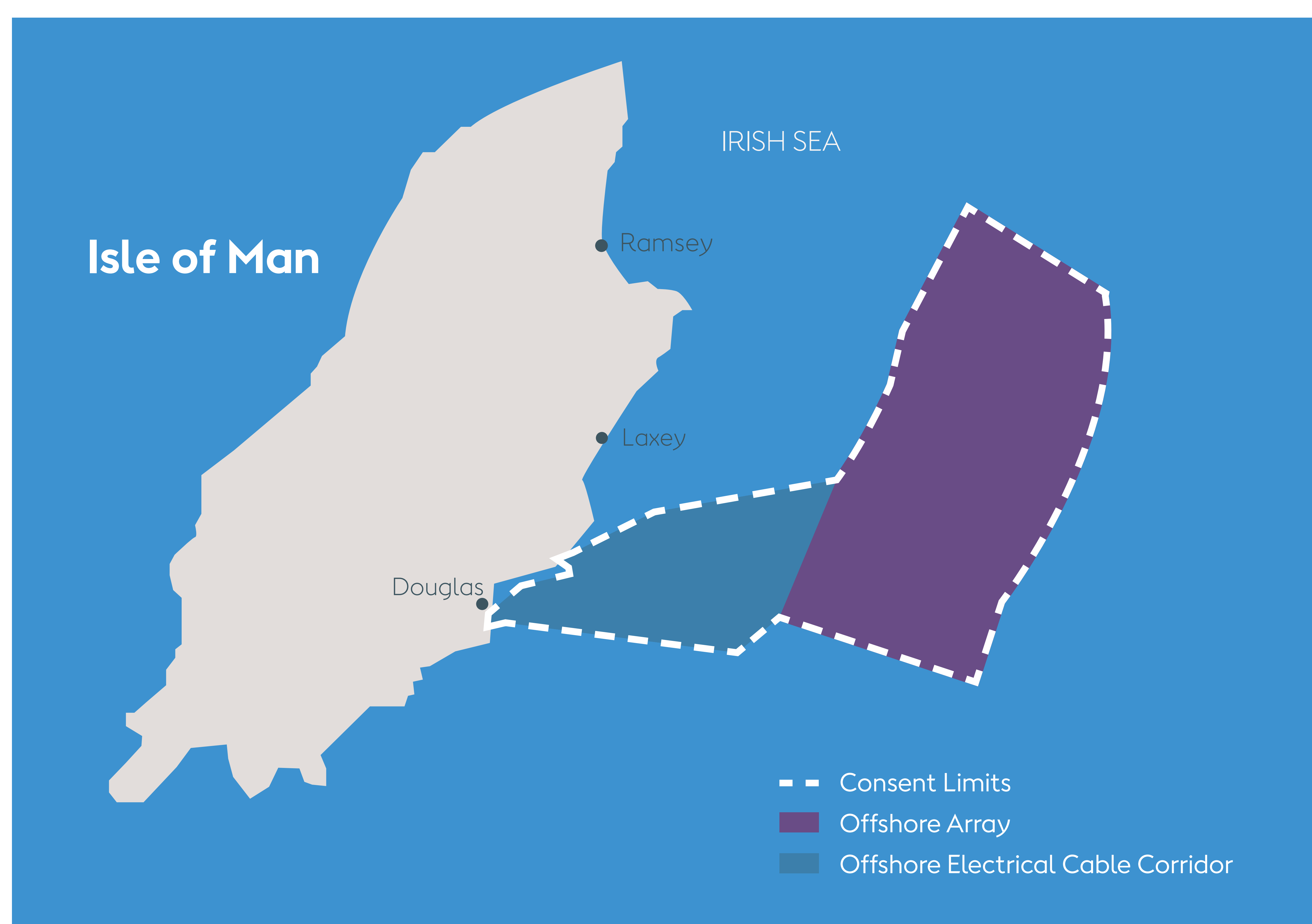
Location: The wind farm will be located in the Irish Sea, within the Isle of Man's territorial waters, approximately 6-12 nautical miles off the east coast of the Island.

Capacity: In the region of 1.4 GW

Number of turbines: Up to 100

Target to submit planning application: Spring 2025

Anticipated operational start date: 2030-2032



Moor Vannin

Offshore Wind Farm

Scotland

England

Northern Ireland

Isle of Man

Moor Vannin

Walney 3 and 4

Walney 2

Ormonde

Walney 1

Morgan

Barrow

West of
Duddon Sands

IRISH SEA

Morecambe

Mona

- Ørsted operational offshore wind farms
- Ørsted offshore wind farms in development
- Other operational offshore wind farms
- Other offshore wind farms in development

Burbo
Bank
Extension

Burbo
Bank

Awel y Môr

Gwynt y Môr

North Hoyle

Rhyl Flats

Wales



Powering the Isle of Man's Energy Transition

We're working with stakeholders across the Isle of Man to support the renewable energy ambitions and net-zero emission targets set out in the Isle of Man Government's Energy Strategy.

The Isle of Man Government's energy policy principles include working to deliver offshore wind. The Energy Strategy sets out the Government's priority to work with Ørsted to deliver offshore wind and maximise the benefits of the existing Agreement for Lease.

Our ambition for the Moor Vannin Offshore Wind Farm is to deliver more than just green energy. Our aim is for economic investment, skills training, and long-term job opportunities to be the lasting legacy of the Isle of Man's transition to renewable energy.

An Operations and Maintenance (O&M) base in the Isle of Man would create new skilled jobs and facilitate new investment. This will be subject to a separate consent once the location and function of the facility has been agreed with the Department of Infrastructure.

“ Our vision for the Island's energy future is one in which our net zero ambition supports the economic strategy, taking advantage of the latest low carbon technologies, and optimising our own abundant natural resources, making us more independent and prosperous. ”

Isle of Man Government
Energy Strategy 2023

Economic Benefits



Government Revenue

The Moor Vannin Offshore Wind Farm is funded entirely by Ørsted. There will be no direct investment or subsidy required from the Isle of Man Government for this project. Revenue from the wind farm will go directly to the Isle of Man Government through rental payments, taxation, and royalties.



Energy Security and Independence

The Moor Vannin Offshore Wind Farm - being located entirely in Manx territorial waters – would provide a secure renewable energy supply for the Isle of Man. A direct link from the wind farm to the Island would enhance the level of energy independence, through both the security of supply and cost control.



Attracting New Business

The offshore wind farm will provide new streams of revenue for businesses in the Isle of Man, both as suppliers for the construction and during operation of the project. The wind farm will also make the Island more attractive for companies seeking to deliver on their own Environmental Social and Governance ('ESG') objectives right here in the Island.



Did you know?
The Moor Vannin Offshore Wind Farm will require no direct investment or subsidy from the Isle of Man Government.

Local Jobs and Skills

We are committed to developing new long-term jobs and enhancing STEM skills on the Island.

Offshore wind provides new jobs for skilled employees in technical, commercial and project management disciplines. The Moor Vannin Offshore Wind Farm would create more than 30 full time, skilled, career opportunities offering competitive pay in the Isle of Man. These positions would include a range of technical, commercial and operational specialists on and offshore. As our project advances, we anticipate providing further information regarding the specifics of these roles.

We look forward to working closely with the Isle of Man Government and local education and skills providers, to develop an approach to jobs and skills that is tailored to meet the Island Plan. This will include working with education and training providers to raise awareness of the different opportunities and set up skills initiatives and programmes similar to those established in the UK.

We are sponsoring STEM Fest 2024 (a festival of Science, Technology, Engineering and Maths) in the Isle of Man and look forward to continuing our engagement on jobs and skills as our plans on the Moor Vannin Offshore Wind Farm evolve.



Did you know?
Our turbine technician apprenticeship scheme has supported over 70 people since 2017.

Community Investment Fund

We are committed to making a positive impact in all the communities where we build and operate our offshore wind farms.

We are announcing our commitment to launch and operate a Community Investment Fund for the Isle of Man. This fund will provide £1.5 million every year for the first 15 years of operation of the Moor Vannin Offshore Wind Farm. The Community Investment Fund for the Isle of Man will deliver direct funding each year for projects, community causes and infrastructure on the Island for the benefit of everyone.

Ørsted will provide all the financial support for the Community Investment Fund for the Isle of Man, including the appropriate governance framework for its operation here in the Island. The fund will start supporting projects and causes as soon as the Moor Vannin Offshore Wind Farm is operational in 2030-32.

Our experience of delivering community funds in collaboration with the communities in which we build and operate has provided tangible positive impacts. Over the time these funds have been in operation we have now contributed over £9.5million to more than 680 local social and environmental projects.

Walney Extension Community Fund

The Walney Extension Community Fund has £600,000 of funding available annually. A total of £100,000 of this is ring fenced for a Skills Fund. To date around 250 local groups and projects have received support. In addition, in collaboration with commercial fisheries Ørsted were founding members of the West of Morecambe Fisheries Ltd which provided funding to support commercial fisheries activities.

Burbo Bank Extension Community Fund

Burbo Bank Extension Offshore Wind Farm is located in Liverpool Bay. The community fund associated with this project is worth almost £250,000 each year. and has so far awarded 187 grants across Merseyside and North Wales.

Ørsted in the Community

Our approach is to engage with everyone in the communities where we develop, build and operate. As well as our information events in November 2023 and our community consultation in 2024, we have been delighted to support and sponsor a variety of local community events.

Sponsorship of Gaia Earth art installation

In April 2024 alongside Net Zero Isle of Man, Arts Council and the UNESCO Biosphere, Ørsted sponsored the installation of Gaia Earth by UK artist Luke Jerram. The event hosted at St Thomas' Church in Douglas for 3 weeks was visited by more than 15,000 people.



Bushy's TT Village Sponsorship in 2024

It was a privilege for Ørsted to take on headline sponsorship of the 2024 Bushy's TT Village in the Villa Marina Gardens for the second year running. At the heart



of the Douglas Promenade, record numbers of locals and visitors came together to enjoy live music from local bands across the Island on the Ørsted stage and sample home grown food and drink for 10 days.

Support for RNLI 200th Anniversary

Ørsted supported the Royal National Lifeboat Institution's start to its 200th anniversary year by sponsoring their gala dinner in November 2023. Ørsted first



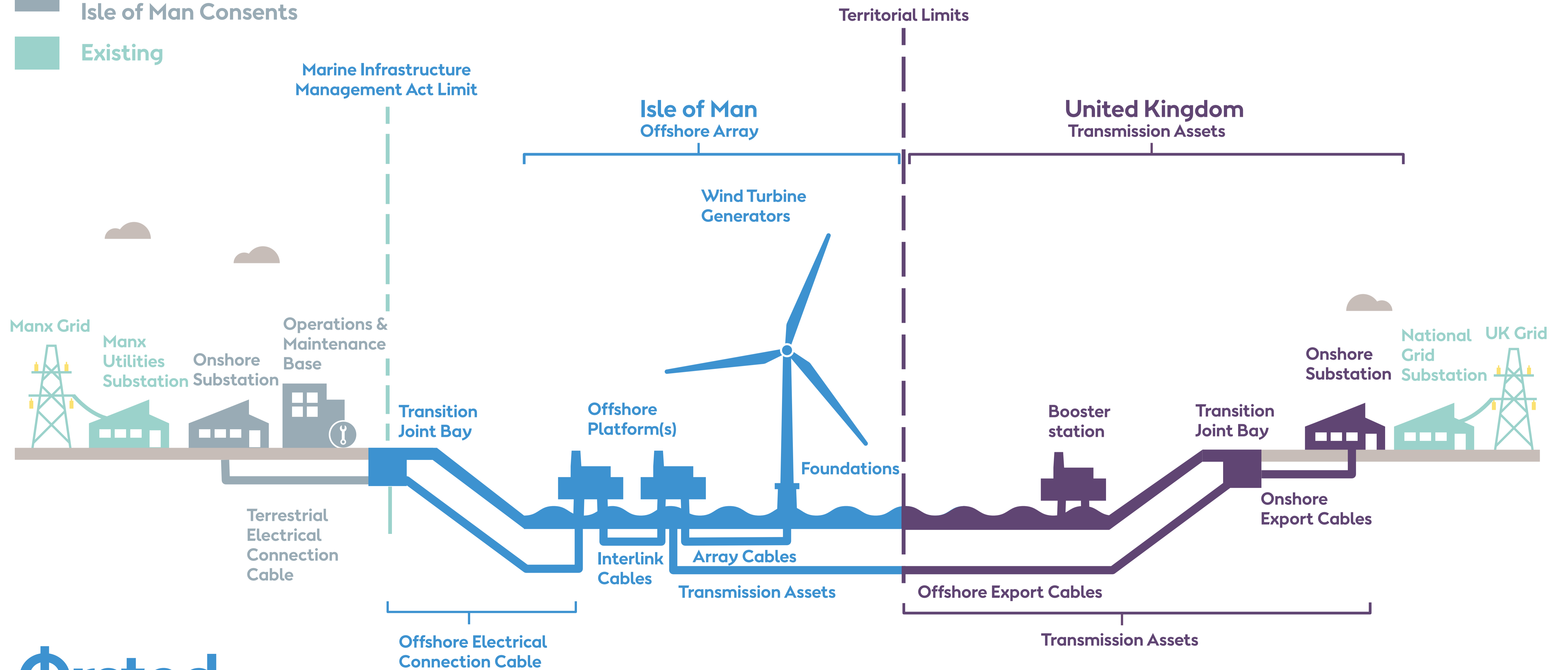
partnered with the RNLI in 2015 and our support focuses on supporting the running costs at seven lifeboat stations, all of which are near our offshore wind farm sites. The partnership has so far helped to fund nearly 600 launches and aid more than 580 people at sea. We are extremely proud to continue our partnership with the RNLI and help this amazing charity save lives at sea.

Moor Vannin

Offshore Wind Farm

The Moor Vannin Project

- Proposed Development under Consultation
- Subject to additional Consents (outside the Isle of Man)
- Subject to additional Isle of Man Consents
- Existing

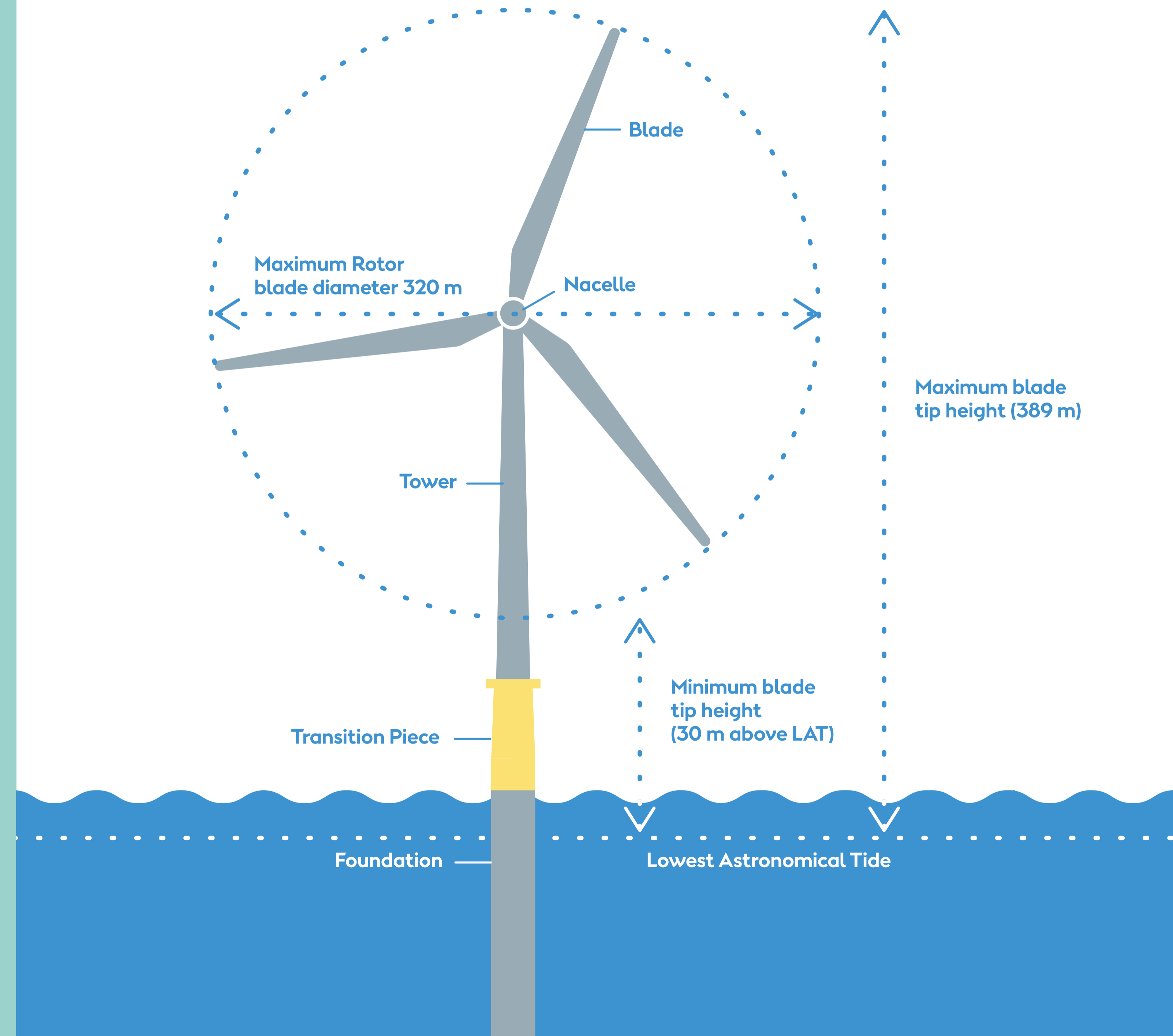


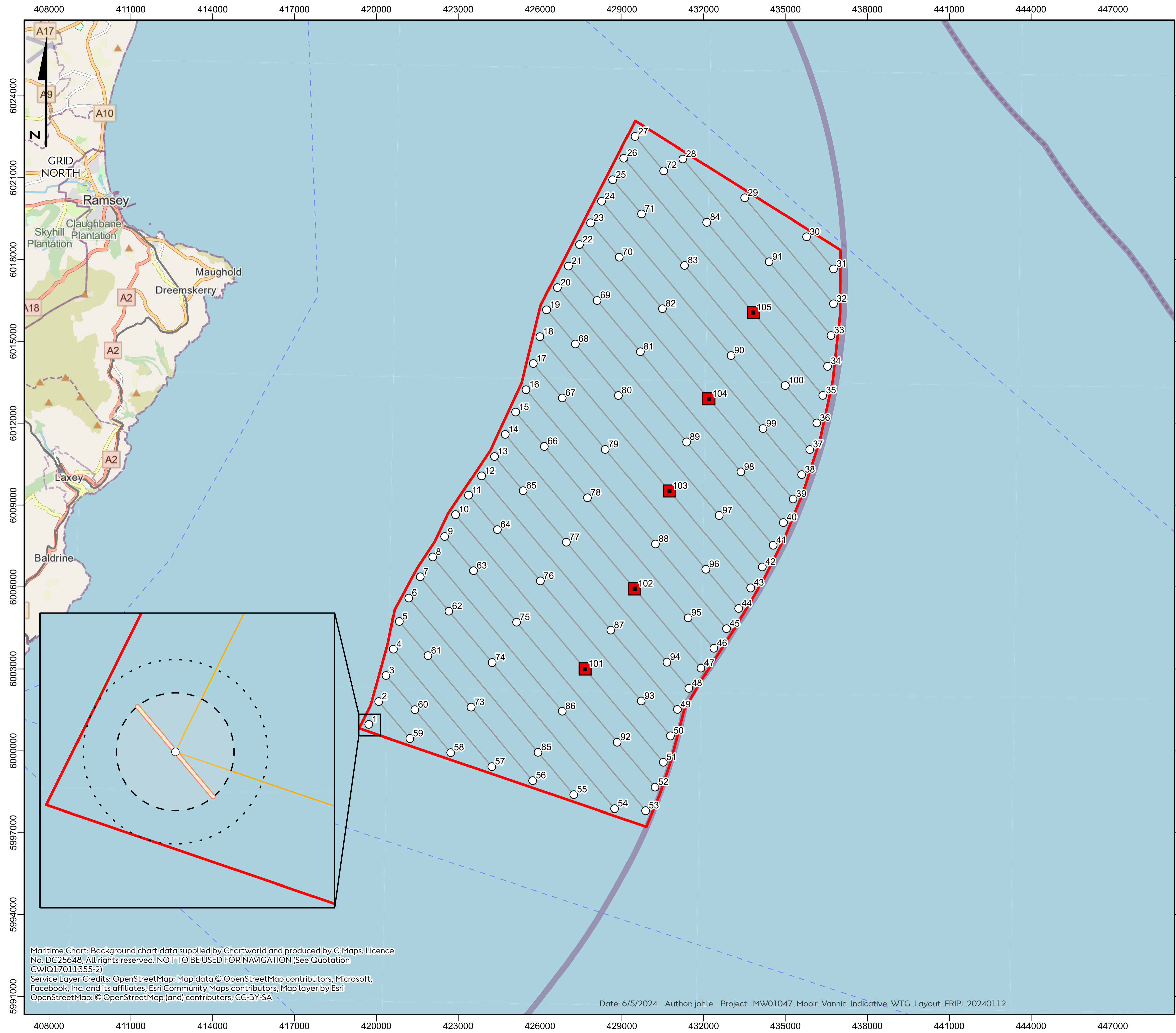
Indicative design

The Environmental Impact Assessment and application for consent will present the Maximum Design Scenario (MDS) for the project. The MDS considers the maximum possible design for all of the project infrastructure. The final design will be refined within this maximum but using the MDS ensures we have assessed and mitigated the greatest possible impacts.

Within the offshore wind farm Area for Lease, the Developable Area Approach (DAA) is a process of active and early engagement aimed to refine the site. This is intended to provide stakeholders with as much opportunity as possible to have their say and influence the final shape and size of the project.

The indicative layout of the offshore wind farm, with up to 100 turbines, up to 5 offshore platforms (substations and accommodation platforms) and a single line of orientation (diagonal lines through the site) will be subject to final refinement prior to the application for planning permission to the Isle of Man Government in Spring 2025.





Moor Vannin

Indicative WTG Layout

Legend

- Indicative WTG Layout (L02)
- WTG Positions
 - Platform Positions
 - Lines of Orientation (820m Spacing)
 - ▭ Moir Vannin Offshore Wind Farm
 - Maximum Rotor Diameter (320m)
 - ⊘ Rotor Area
 - ⊘ Jackup Vessel Area (250m)



Coordinate System: ETRS 1989 UTM Zone 30N
 Scale@A3: 1:135,000

0 1250 2500 5000 Metres

0 5,000 10,000 20,000 Feet

REV	REMARK	DATE
1	First issue	18/01/2024

Maritime Chart: Background chart data supplied by Chartworld and produced by C-Maps. Licence No. DC25648, All rights reserved. NOT TO BE USED FOR NAVIGATION (See Quotation CWI017011355-2)
 Service Layer Credits: OpenStreetMap: Map data © OpenStreetMap contributors, Microsoft, Facebook, Inc. and its affiliates, Esri Community Maps contributors, Map layer by Esri
 OpenStreetMap: © OpenStreetMap (and) contributors, CC-BY-SA

Date: 6/5/2024 Author: johle Project: IMW01047_Moor_Vannin_Indicative_WTG_Layout_FRIP1_20240112

Indicative WTG Layout
 Document no: IMW01047
 Created by: JOHLE
 Checked by: RICYO
 Approved by: FRIP1



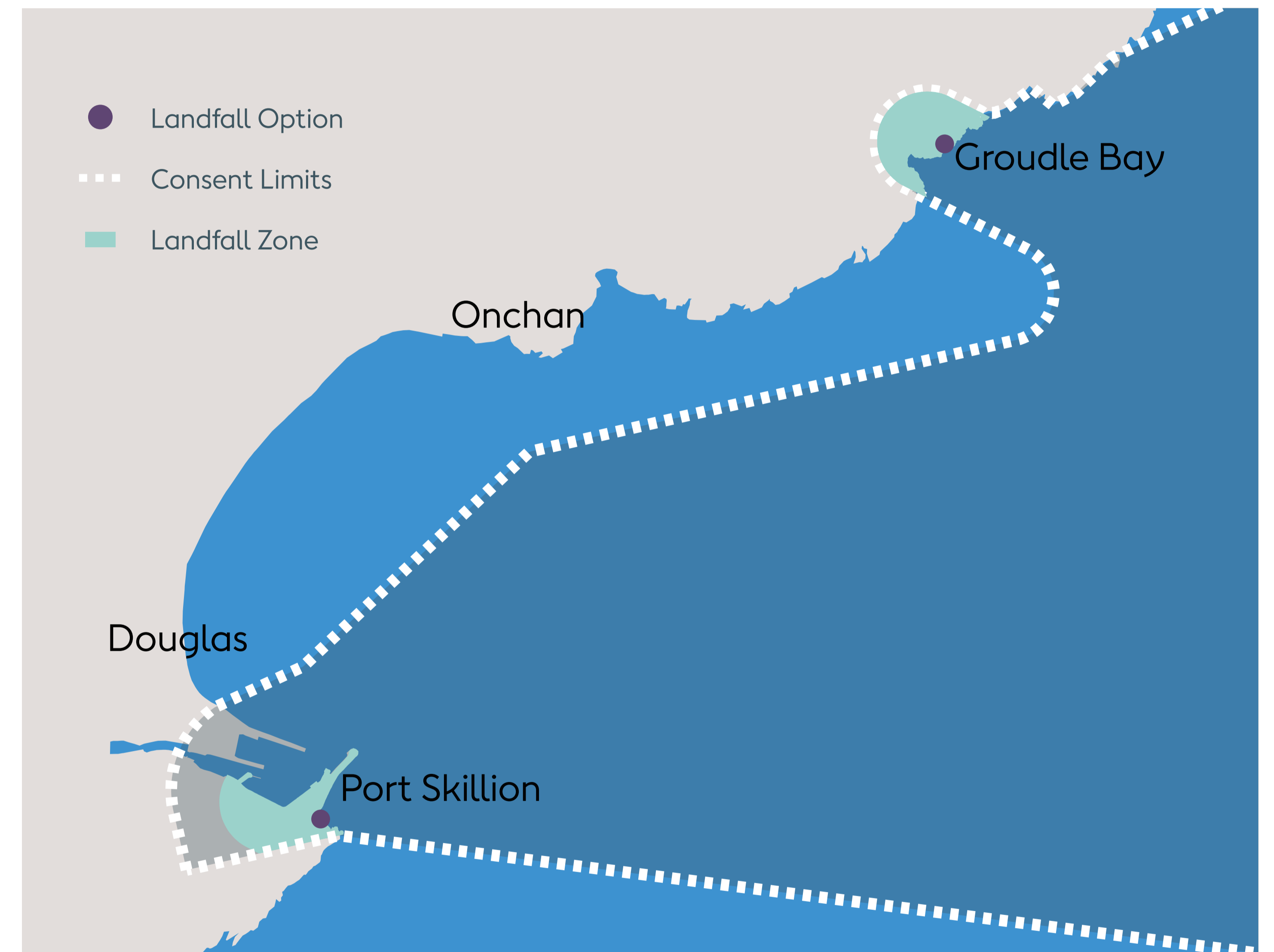
Bringing offshore wind power to the Island

Ørsted is working closely with Manx Utilities on the feasibility and options available for electricity generated by the offshore wind farm to come to the Island.

Our proposal is that we could provide up to 100 MW of offshore wind power to the Island which could be utilised by Manx Utilities to help meet the Island's developing energy needs into the decades to come.

The point of connection to the Manx Grid is yet to be determined but we know that it is likely to be in the Douglas area following discussions with Manx Utilities. Therefore the cable landfall and transition bay options at Groudle Bay and Port Skillion will both be included as part of our planning application under the Marine Infrastructure Management Act.

We have demonstrated our commitment to this Island link by conducting marine geophysical surveys of potential cable routes to the landfall locations in and around Douglas Bay during Spring 2024.



How we are working with Manx Utilities

We are in agreement with Manx Utilities that the Moor Vannin Offshore Wind Farm should explore a direct connection to the Isle of Man post-2030.

Orsted and Manx Utilities see the Moor Vannin Offshore Wind Farm as complimentary to the existing Isle of Man Government Energy Strategy 2023.

Manx Utilities are in the process of undertaking a feasibility study on a proposed connection for the Moor Vannin Offshore Wind Farm. This will help to define the connection point and capacity for the Island link.

Ørsted and Manx Utilities are continuing to have ongoing engagement regarding the Moor Vannin Offshore Wind Farm and the technical, commercial and consenting aspects of the Island link. It will be agreed between the parties who will consent, construct and operate the onshore elements.

“Offshore wind has the potential to provide a transformative new revenue stream for the Island that can support both our net zero ambitions and wider societal spending priorities”

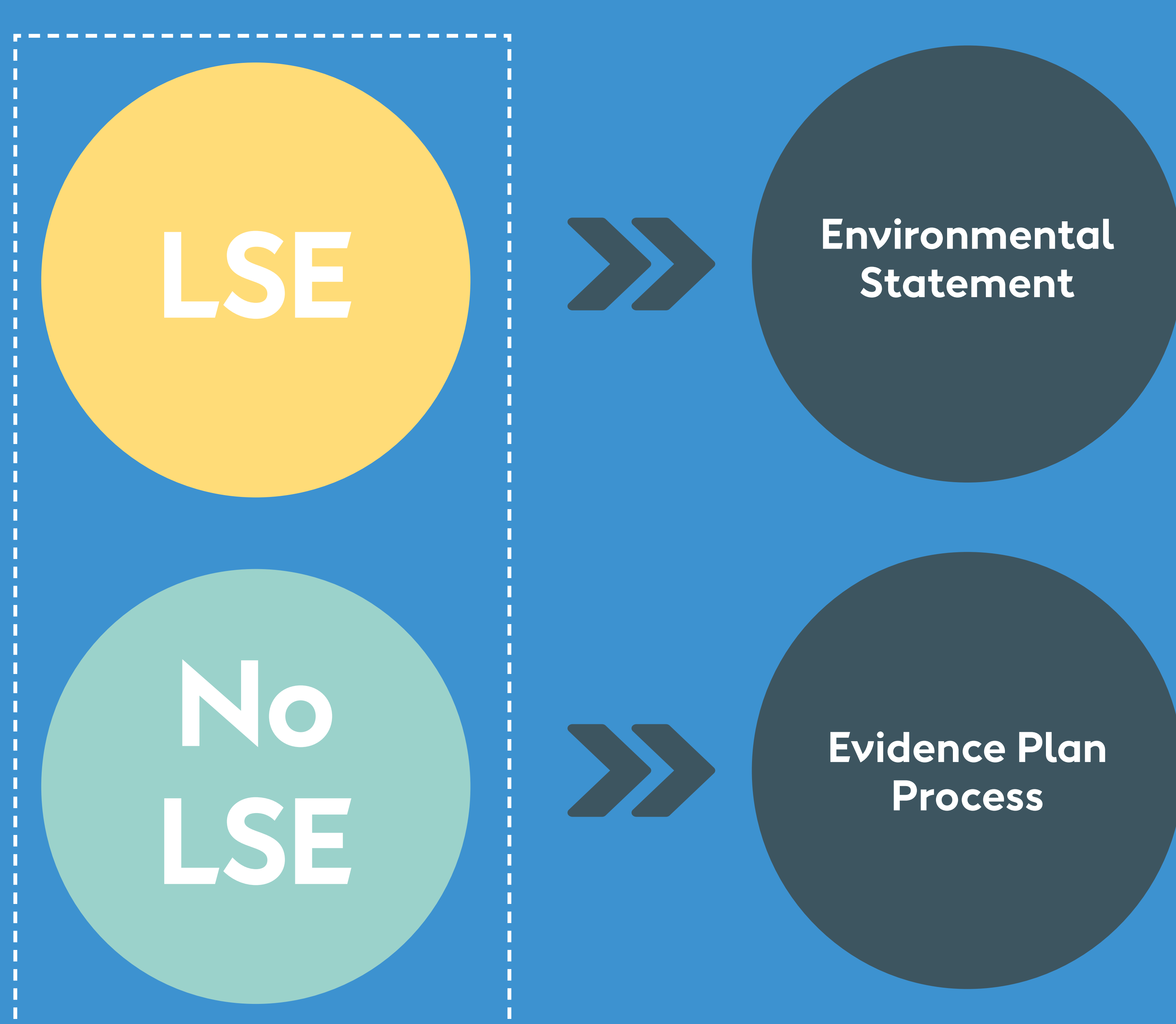
Isle of Man Government
Energy Strategy 2023



Environmental Impact Assessment

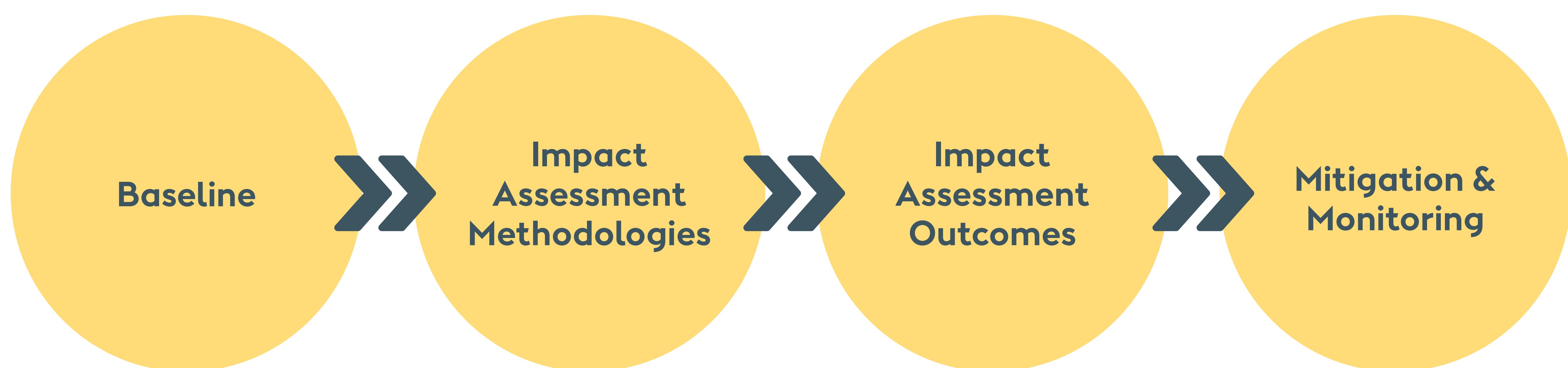
A process overview

The purpose of EIA is to identify the Likely Significant Effects (LSE) on the environment from the construction, operation and decommissioning of the Moor Vannin Offshore Wind Farm. Where significant effects are identified, measures are proposed to eliminate or reduce these to environmentally acceptable levels. This information is then presented in the final Environmental Statement, which is currently anticipated to be submitted to the Isle of Man Government in early 2025. This will assist regulators in making their decision about whether to grant Marine Infrastructure Consent (MIC) for the development.



How have the environmental impacts been identified and assessed?

Moor Vannin has taken a proportionate approach to the EIA, which began with submission of an EIA Scoping Report to the Department of Infrastructure in October 2023. The Scoping Opinion forms the basis of the EIA by identifying and confirming which topics require assessment. Consultation with statutory and non-statutory bodies has taken place throughout this process on baseline, impact assessment methodologies and outcomes and any proposed monitoring and mitigation.



Our Commitments

We will take a proactive approach to avoiding or minimising environmental impacts through the use of commitments. Commitments are mitigation measures during the construction, operation and decommissioning of the Moor Vannin Offshore Wind Farm. Anyone can propose a commitment for consideration by the Moor Vannin team. Here are some examples of commitments we have already made:

Our Commitments	Why
We will apply to DEFA for a Protected Species Licence for any works that could affect protected species (under the Wildlife Act 1990).	To ensure that appropriate action can be taken to mitigate impact on protected species.
We will establish offshore construction safety zones of up to 500 m around infrastructure during construction and major maintenance.	Minimise risk to navigation and interaction with fishing gear.
We will develop a Moor Vannin Skills and Employment Plan.	To identify opportunities for socio-economic benefit to the community.
We will develop a Supply Chain Strategy.	To identify opportunities for local companies.
Cable burial will be our preferred method of cable protection.	To protect infrastructure and to limit the effects of Electro-Magnetic Fields on sensitive ecological receptors.
We will develop and adhere to a Marine Pollution Contingency Plan for dealing with any offshore spills and/or pollution events.	To minimise the potential for pollution inputs into the marine environment.

Your feedback will also help us to identify a number of key commitments that we will pledge to deliver as part of this development. All Island residents are invited to offer their suggestions for actions we could undertake to minimise impacts.

Community Information Events

In November 2023, we held five Community Information Events in the Isle of Man. The events introduced our proposals to residents on the Island, established lines of communication and gathered initial project feedback which has been used to inform the design.

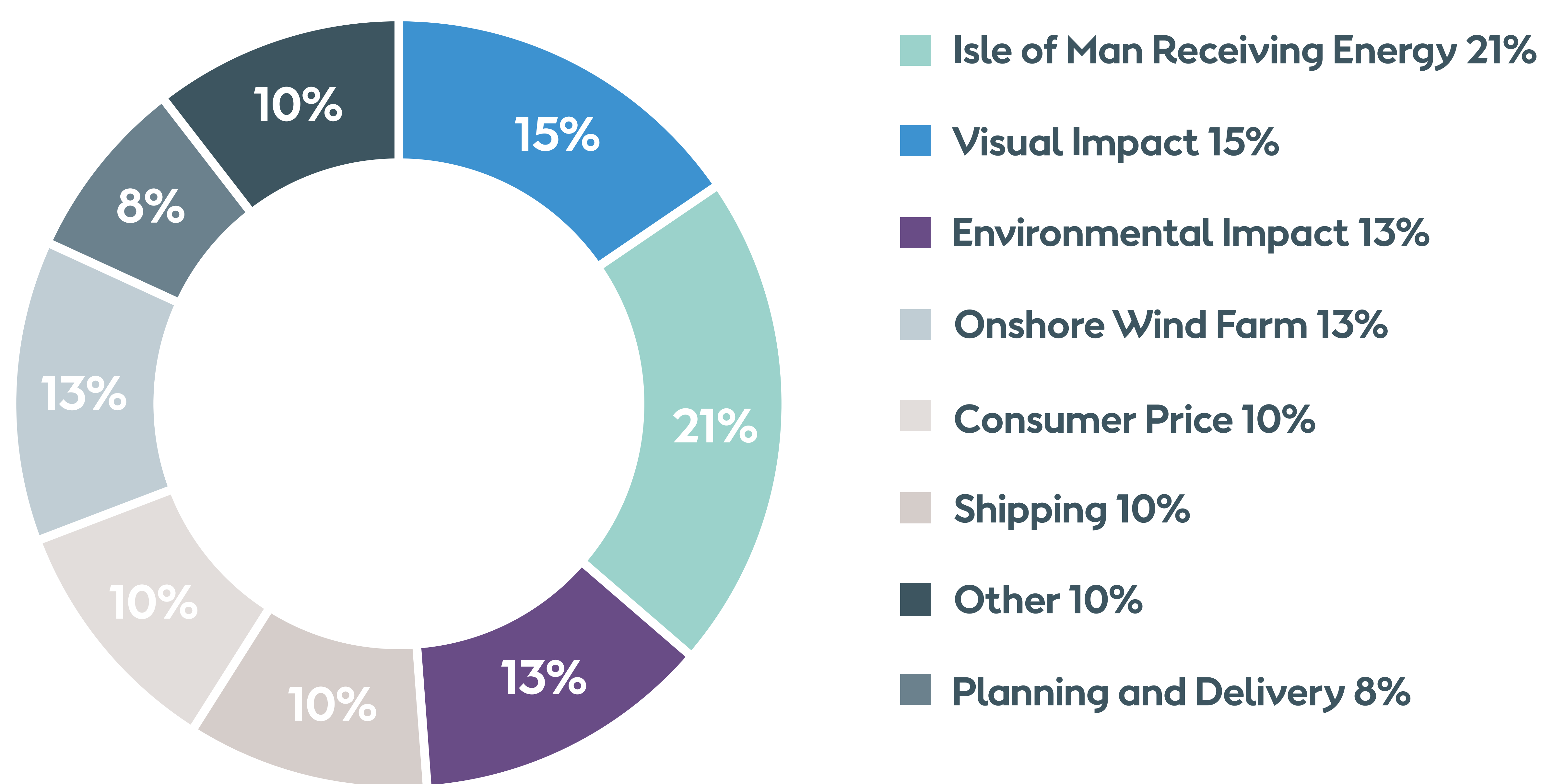
There was significant support for the project across all five venues. The main reasons voiced were:

- To mitigate impacts from climate change
- The need to be part of the green energy transition
- To support economic growth on the Island
- The financial benefits to the Island
- The opportunity for cheaper energy bills
- As an alternative to onshore renewables

Key concerns were expressed from residents around the following themes:

- Securing a link to receive power from the offshore wind farm
- Visual impact
- Impact to local ecology
- Shipping and navigation impact
- The practicalities of grid connection and the timeline

Theme of comments



Aerial Surveys

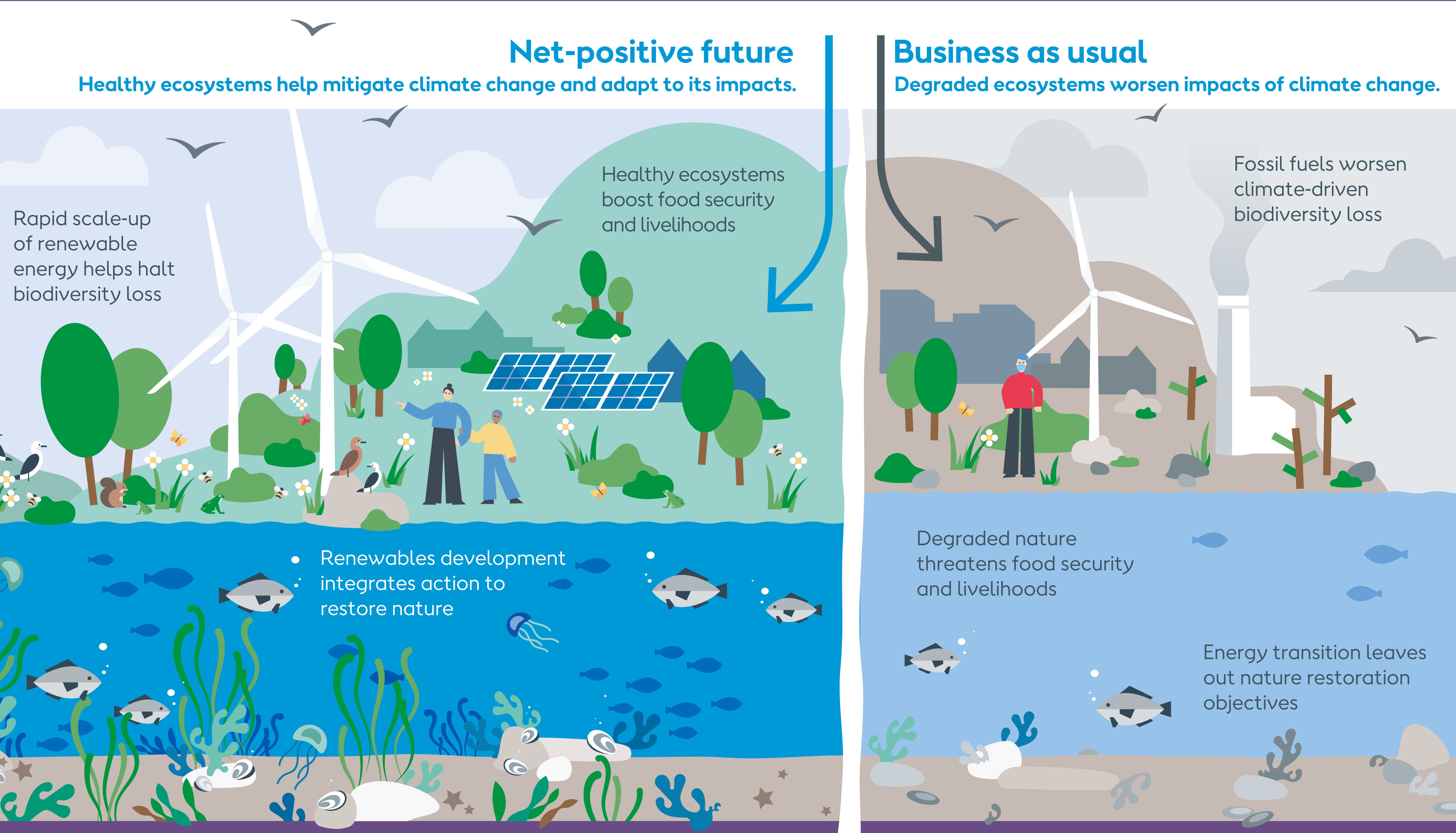
Moor Vannin Offshore Wind Farm completed two years of surveys looking at the birds and marine mammals that can be found in and around the area where the wind turbines will go (the offshore array). These surveys used small aeroplanes with multiple cameras mounted to the undersides to fly back and forth over the array area and capture images of the animals. These images were then analysed by specialists to identify the animals and species seen.

When combined with data that is available from scientific organisations, and the Isle of Man and UK Governments, we get a clear picture of the animals that live in, and travel through, the offshore array area. The data allows us to model any of the potential mitigation measures that we think could support nature and biodiversity gain but also plan for future monitoring during the lifetime of the project.

Protecting and Enhancing Biodiversity

The Moor Vannin Offshore Wind Farm aims to deliver a net-positive biodiversity impact, in line with Ørsted's global ambition for all projects from 2030.

This means we will leave the natural environment in a measurably better condition than it was before we built our project. We have been working closely with the Department for Environment, Food & Agriculture and environmental groups on the Island including Manx Wildlife Trust (MWT), Manx BirdLife and Manx Whale and Dolphin Watch to understand the potential impacts, and opportunities, of the offshore wind farm on and for natural habitats.



Through our Biodiversity Strategy we will work together to identify the best opportunities for us to enhance biodiversity on the Island. We have shared a copy of our strategy with these groups and hope to have agreed the key steps, projects and initiatives for Moor Vannin to deliver net positive biodiversity impact when we make our application in Spring 2025.

?

Did you know?
In 2024 we were ranked as the number one most sustainable energy developer in the world by the Corporate Knight Global 100 index.

What will the Offshore Wind Farm look like?

Visualisation images have been produced by Environmental Impact Assessment (EIA) specialists as part of the Seascape and Landscape Visual Impact Assessments (SLVIA) of the Moor Vannin Offshore Wind Farm. Please note that these are not an artist's impression, they are a tool that specialists have used to assess the visual impact from different viewpoints agreed with the Isle of Man Government and their advisors as being sensitive and representative locations for assessment. These images should be viewed flat at a comfortable arm's length to give the most realistic impression.

In order to assess the impact, we have followed best practice guidance and based the assessment on a 'Maximum Design Scenario' of the largest number and greatest size of the turbines, across the widest spread and closest edge to the shore. In this way the assessment is based on a scenario with a maximum degree of potential visual impact.

Try our Virtual Reality Experience

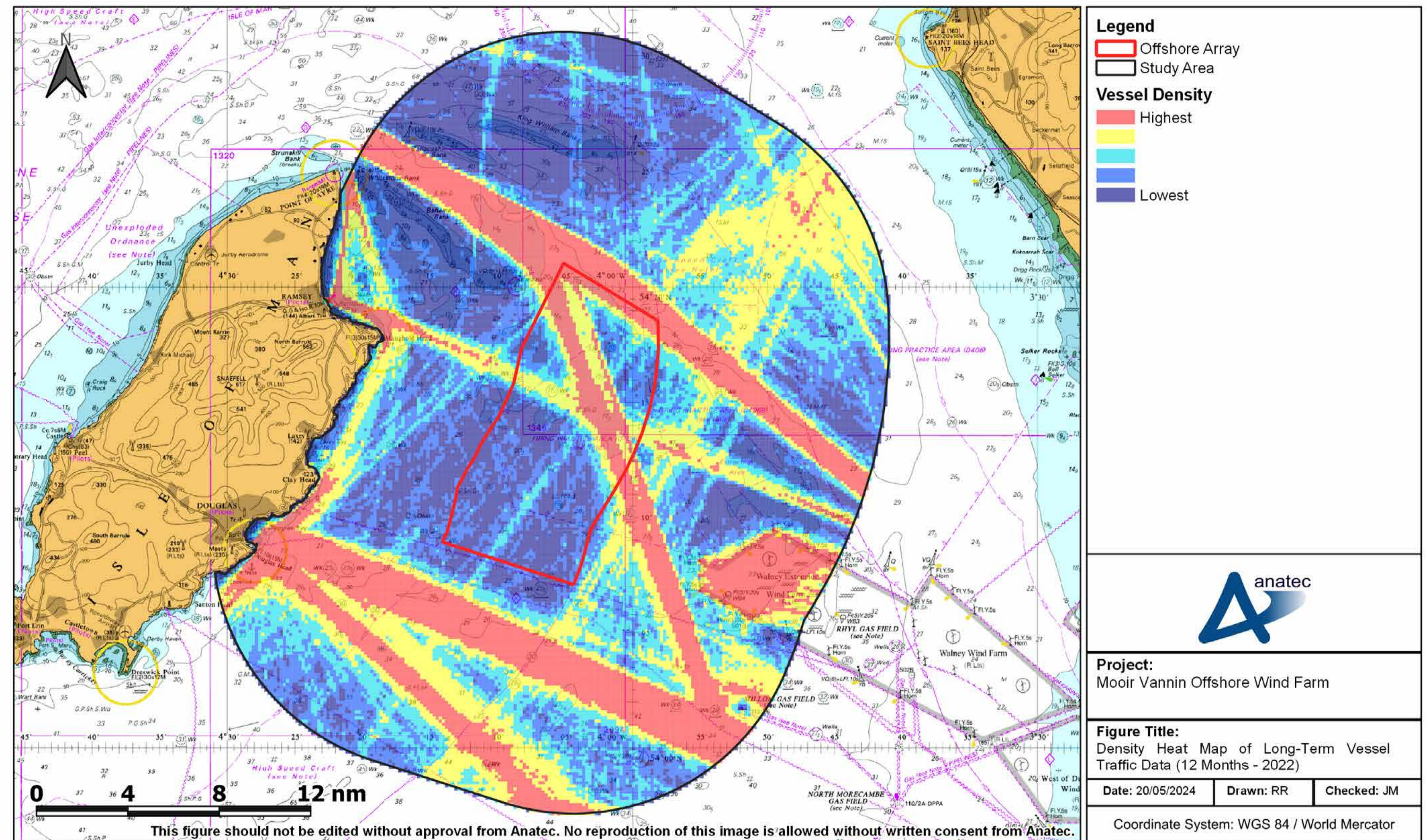
For a more immersive experience, four locations are available to view on Virtual Reality headsets (Ramsey, Maughold Head, Laxey and Douglas). Please speak to a member of our team who can help to get you started.



Please be aware that all photomontages, visualisations and our Virtual Reality Experience are for interpretative purposes only and may not be fully representative of the project which is ultimately built. How the wind farm will finally look will depend on multiple factors including the final design, planning permission, weather, time of day, tides and position of the viewer.

Shipping and Navigation

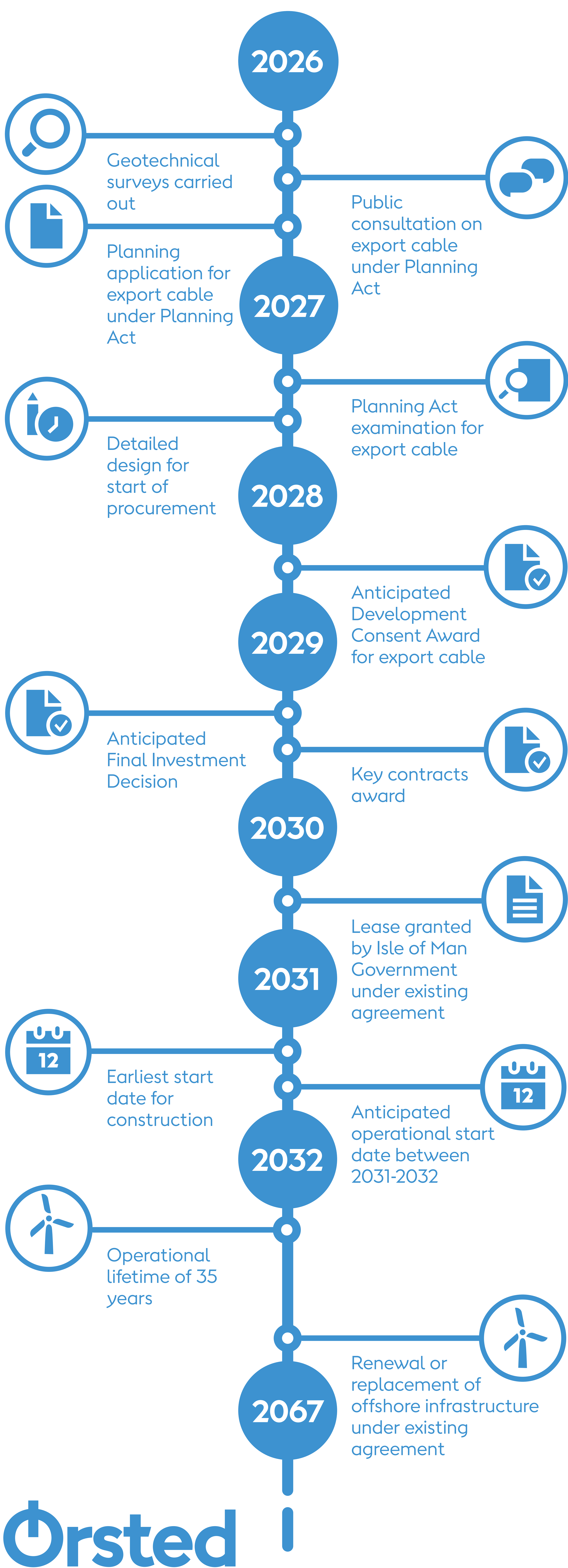
We have been working with marine users to assess potential impacts on them and to ensure appropriate mitigation is in place to prevent disruption to shipping, navigation and the lifeline services. In order to have a clear understanding of the vessels operating in the area, and who we need to engage with, we have combined the results of our winter and summer vessel traffic surveys with available ship tracking data. Our engagement with shipping stakeholders is ongoing through the Evidence Plan Process, which aims to agree the impacts of the wind farm and any mitigation measures ahead of our planning application to the Isle of Man Government in 2025. As part of this process we will also assess the potential for cumulative impacts with other projects and work with stakeholders to mitigate as far as possible.



Consultation timeline



Continuing timeline



Share your views

We welcome your feedback throughout our consultation period which runs from Monday 15 July until Wednesday 11 September.

Have Your Say

There are 4 ways to provide your feedback:



Scan the QR code to visit our Consultation Portal.
moirvannin.commonplace.is



The portal will give you a map of our plans and take you through a series of questions. The site is both mobile and laptop friendly, as well as offering a range of accessibility features including screen reader and voice recognition compatibility.



Complete a feedback form and post it in the box at the entrance to this venue.



Send us an email:
moirvannin@orsted.com



Send us a letter:
Ørsted, The Old Courthouse, Athol Street,
Douglas, Isle of Man, IM1 1LD.

We are committed to making sure all members of the community are able to respond to this consultation. Should you require any of our consultation materials in large print, audio or braille then ask a member of our team.

All responses to this consultation will be carefully recorded and considered by our team. Your feedback will be responded to in our Consultation Report which will accompany our application for planning permission. This report will demonstrate how we have considered all feedback to refine the design of the wind farm.

If we have been unable to take into account suggested changes to our design we will clearly state why. The Report will be published in our document library at **orsted.im/moirvannin**.