

Revised Larbrax Wind Farm

Pre-Application Consultation (PAC) Report



Revised Larbrax Wind Farm
Pre-Application Consultation (PAC) Report

Prepared by LUC
on behalf of
Orsted Onshore UK Limited

December 2024



Preface

This Pre-Application Consultation (PAC) Report has been prepared to support a planning application by Orsted Onshore UK Limited ('the Applicant') to Dumfries and Galloway Council (DGC) under the Town and Country Planning (Scotland) Act 1997 as amended ('the Act') to construct and operate the Revised Larbrax Wind Farm ('the Proposed Development'). The Proposed Development is located approximately 9 kilometres (km) west of Stranraer within the DGC administrative area. The Proposed Development will comprise up to four wind turbines with battery storage and other ancillary infrastructure.

An Environmental Impact Assessment (EIA) Report has also been prepared to accompany the application and presents the likely significant environmental effects of the Proposed Development. The EIA Report comprises the following volumes:

- Volume 1: Non-Technical Summary;;
- Volume 2: Main Report;
- Volume 3a: Figures;
- Volume 3b: Landscape and Visual Impact Assessment Visualisations (Part 1);
- Volume 3c: Landscape and Visual Impact Assessment Visualisations (Part 2) and Cultural Heritage Visualisations;
- Volume 4: Technical Appendices; and
- Volume 5: Confidential Documents.

In addition to the above, the application is also supported by a Planning Statement and a Design and Access Statement (DAS).

A hard copy of the EIA Report and supporting documents will be available for public viewing during the application consultation period at the following address:

Dumfries and Galloway Council
Planning and Development
Economy and Infrastructure
Militia House
English Street
Dumfries
DG1 2HS

A hard copy of the EIA Report and supporting documents is available for £500 and can be requested via the following email address: larbrax@orsted.com. An electronic version of the EIA Report and supporting documents will be available to download from the project website at www.larbraxwindfarm.co.uk and the DGC planning portal: <https://eaccess.dumgal.gov.uk/online-applications/>.

Any public representations to the application may be submitted via the DGC planning portal at <https://eaccess.dumgal.gov.uk/online-applications/> or by email to planningrepresentations@dumgal.gov.uk, identifying the proposal and specifying the grounds for representation. DGC will advertise the submission of the EIA Report in local and national press and the DGC planning portal. The advert will state the deadline for submitting representations to the DGC in relation to the planning application.

Contents

1 Introduction

- 1.1 Context to community report
- 1.2 Background to revised Larbrax Wind Farm community engagement

2 Consultation activities

- 2.1 Timeline of community engagement
- 2.2 Introduction of the project to local community
 - 2.2.1 Introduction of the project to local stakeholders
- 2.3 First round of Community Engagement Events
 - 2.3.1 Logistics
 - 2.3.2 Promotion
 - 2.3.3 Attendance
 - 2.3.4 Consultation topics
 - 2.3.5 Feedback
- 2.4 Second round of Community Engagement Events
 - 2.4.1 Logistics
 - 2.4.2 Promotion
 - 2.4.3 Attendance
 - 2.4.4 Consultation topics
 - 2.4.5 Feedback
- 2.5 Common themes / community benefit
- 2.6 Dedicated contact details
- 2.7 Project website
- 2.8 Engagement with locally elected representatives
- 2.9 Follow up activity

3 Impact of community engagement on proposed development

4 Conclusion

Appendices

Appendix A - Site Location Map

Appendix B - Introductory email to local stakeholders

Appendix C - Autumn 2023 newsletter (on community noticeboard at Leswalt Memorial Hall)

Appendix D - Digital advertising campaign

Appendix E - Round one exhibition print advert (Galloway Gazette, Stranraer & Wigtownshire Free Press, Galloway News, Dumfries & Galloway Standard)

Appendix F - Larbrax project website

Appendix G - Round one exhibition boards

Appendix H - Feedback form for first round of consultation events

Appendix I - Spring / summer 2024 newsletter

Appendix J - Newspaper adverts for second round of consultation events - Stranraer & Wigtownshire Free Press

Appendix K - Round 2 event poster

Appendix L - Email highlighting second round of exhibitions

Appendix M - Exhibition boards for second round of consultation events

Appendix N - Feedback form for second round of consultation events

Appendix O - Post- round two exhibition email to those who registered for updates

1. Introduction

1.1 Context to community report

The revised Larbrax Wind Farm project, on the North Rhins Peninsula in Wigtownshire, Dumfries and Galloway, is being proposed by Orsted, a global leader in wind energy which operates across the United Kingdom. The proposed development is on privately-owned farmland to the west of the village of Leswalt (**see Appendix A**).

Between 2013 and 2016, a proposal for Larbrax Wind Farm was consulted on and submitted to Dumfries and Galloway Council. This was ultimately consented at appeal by the Scottish Government in 2016, allowing for the construction of eight turbines, each up to 100 metres in height. The turbine capacity proposed was up to 2.5 MW.

From 2016 until 2024, work took place to make the project both technically and commercially viable, including discussions with turbine suppliers about the procurement of the consented turbines and Scottish Power Transmissions on the proposed grid connections.

The culmination of this work is the revised proposal for Larbrax Wind Farm. This addresses technical and commercial barriers identified in the previously consented development.

The headline change to the plans consulted upon was the proposed reduction from eight turbines to five (during the first round of public exhibitions) then to four (during round two). The total height of the turbines proposed has increased from that previously consented - up to 149.9 metres. The turbine capacity will be approximately 5MW - meaning the same total capacity (circa 20MW) can be achieved from half the number of turbines first consented, albeit they are taller.

1.2 Background to revised Larbrax Wind Farm community engagement

The project was initially introduced to locally elected representatives and other stakeholders by email, sent by our team at Message Matters, on Orsted's behalf, as part of our community engagement work, in October 2023. This gave a broad outline of the work that we were proposing to do.

From the outset of these proposals, Orsted has endeavoured to engage closely and inclusively with the communities close to the site so that it can listen and respond to feedback. It has made significant efforts to provide opportunities for the community to view, discuss and comment on all elements of the proposal in both an in-person setting, and via online means, in order to allow for maximum community participation.

All of the public engagement has been undertaken with the intention of maximising communication with, and feedback from, the community, with opportunities to view, discuss in detail and comment on the proposals. Orsted, through its mailings and in-person events, has offered direct developer communication.



This community report has been prepared in accordance with Regulation 7B of the Town and Country Planning (Development Management Procedure) (Scotland) Regulations 2013 (as amended) and Circular 3 (2022): Development Management Procedures. This has been done on behalf of Orsted by Message Matters, the strategic communications agency that has assisted with the consultation and community engagement for the revised proposal for Larbrax Wind Farm, to accompany the application.

2. Consultation activities

2.1 Timeline of community engagement

The following is a summary of the timeline of community engagement activities that were carried out by Orsted and Message Matters on its behalf in relation to the project. These are then outlined further in this community report.

| Date | Community Engagement Activity |
|--------------|--|
| October 2023 | Email advising of Proposal of Application Notice (PoAN) - in accordance with Regulation 7 - shared with local elected representatives. |
| October 2023 | <p>Email communication introducing the project to:</p> <p>Local MP Constituency MSP All Stranraer and the Rhins councillors Local Community Councils (Stranraer, Ochtrelure and Belmont, Portpatrick, Stoneykirk, Lochan)</p> <p>(This email can be found at Appendix B)</p> |
| October 2023 | <p>Pre-round one exhibition newsletter delivered to all properties within 5km of the proposed wind farm site, which included all properties in Leswalt, Stranraer and Portpatrick.</p> <p>Total: 7,016 households</p> <p>(See Appendix C)</p> |
| October 2023 | <p>Pre-round one exhibition print newspaper advertising via:</p> <p>Stranraer & Wigtownshire Free Press Galloway Gazette Galloway News Dumfries & Galloway Standard</p> <p>Digital advertising campaign delivered via Reach news websites in Dumfries and Galloway (See Appendix D and E)</p> |
| October 2023 | Update to the website www.larbraxwindfarm.co.uk (see Appendix F) |

- November 2023 First round of community engagement exhibitions held at Leswalt Memorial Hall, Stranraer Millennium Centre and Portpatrick Village Hall.
(See Appendix G and H)
- June 2024 Pre-round two exhibition newsletter (highlighting changes made since round one) delivered to all properties within 5km of the proposed wind farm site, which included all properties in Leswalt, Stranraer and Portpatrick.

Total: 7,016 households
(See Appendix I)
- June 2024 Updated plans outlined on www.larbraxwindfarm.co.uk
- June 2024 Pre-round two print newspaper advertising via:

Stranraer & Wigtonshire Free Press
Galloway Gazette
(See Appendix J)
- June 2024 Project update / round two exhibition invite emailed to:

Local MP
Constituency MSP
All Stranraer and the Rhins councillors
Local community councils Local Community Councils (Stranraer, Ochtrelure and Belmont, Stoneykirk, Lochan. Portpatrick disbanded.)
Those who had registered for updates during the first round of exhibitions

An event poster was shared with everyone contacted to help promote the upcoming events. **(See appendix K and L)**
- June 2024 Second round of community engagement exhibitions held at Stranraer Millennium Centre, Leswalt Memorial Hall and Portpatrick Village Hall.
(See appendix M)
- July 2024 Email contact with all of those who registered for project updates, giving them online access to the boards displayed at the second round of exhibitions. **(See appendix O)**

2.2 Introduction of project to local community

Described below are the ways in which the various stakeholders were introduced to the revised proposals.

2.2.1 Introduction of the project to local stakeholders

Following submission of the Proposal of Application Notice (PoAN), Orsted wrote directly to local stakeholders (including the area's elected representatives). This advised them not only of the first round of community engagement exhibitions, but the background to the previously consented project and how the revised proposals differed. This also encouraged them to share news of the upcoming events, either by word-of-mouth, or on social media or by posters, using materials shared with them.

At all times, Orsted has highlighted its ongoing commitment to meet with interested parties to discuss any views or answer any questions they may have.

The host community council area for the project is Leswalt. Given that this community council has not been in operation during the consultation process, Orsted has been keen to keep other elected representatives covering that area updated on the proposals. Should a local community council come into being during the lifetime of any new consented development, Orsted would seek to establish contact and to build a relationship with them. Representatives of other village organisations attended the public exhibitions.

During the consultation phase, Portpatrick Community Council also disbanded. As in Leswalt, the consultation process brought forward a number of other organisations active in the village to engage with the proposals, ensuring a broad cross-section of the community had the opportunity to discuss what is proposed.

Indeed, across the piece, the flow of communications and engagement opportunities which followed them led to conversations with a number of organisations from across Stranraer and The Rhins as regards the proposals. Many of them shared their views on the revised wind farm plan.

2.3 First round of Community Engagement Events

2.3.1 Logistics

The first three community engagement exhibitions for the revised proposal for Larbrax Wind Farm were held on November 6 and 7 2023 at Leswalt Memorial Hall, Stranraer Millennium Centre and Portpatrick Village Hall respectively.

2.3.2 Promotion

The events - coupled with general awareness raising about the revised proposals - were promoted via a newsletter delivered to all properties within 5km of the wind farm site, which included all properties in Leswalt, Stranraer and Portpatrick. Print advertisements in the Stranraer and Wigtownshire Free Press, Galloway Gazette, Galloway News, and Dumfries and Galloway Standard, and a digital campaign delivered across Reach news websites in the local area. This is over and above the stakeholder contact detailed above.

2.3.3 Attendance

18 local residents attended the Leswalt Memorial Hall engagement event, 15 visited Stranraer Millennium Centre and 20 attended the exhibition in Portpatrick. 15 feedback forms were completed at Leswalt, seven at Stranraer and 13 at Portpatrick (some couples responded on one form). Attendees were asked why they had come along to the event. All indicated that they had come along in their capacity as a local resident; a further 10 attendees indicated that they also attended due their interest in renewable energy.

All bar two attendees said they found the information useful. Of those two, one did not answer the question, the other said they “did not know”.



2.3.4 Consultation topics

The information provided on the display panels and the specific topics on which feedback was sought was informed by the nature of the proposals. Specifically, a number of them drew attention to the differences between the scheme consented and the revised proposals. These included those demonstrating efficiency and the potential visual impact.

2.3.5 Feedback

A copy of the feedback form can be found in **Appendix H**. Attendees were invited to complete these at the event, but a number took them away to complete at home.

Almost 70% of attendees at the three events supported the revised proposals for Larbrax Wind Farm. The split between yes/no/don't know/no answer was largely consistent across the three locations in which the exhibitions were held.



Some of those saying they did not support the proposal gave the reason that the height of the turbines had been increased, which they did not approve of. There were concerns noted about the impact of noise, shadow flicker, and visual amenity from certain viewpoints - views from Killantringan were noted by one attendee as being a particular concern.

Some of those saying they did support the proposal explained that they liked it has fewer turbines but with a higher yield.

Of those supporting the proposal, a significant number noted that their support was driven by a recognition of the need to address climate change, scale back use of fossil fuels and help the environment. The community benefit opportunities were also noted as a reason to support the project.

Quotes included:

- *"I think it will be a good project locally and help local funds"*
- *"I think wind power is needed, it is clean and efficient"*
- *"[I support the proposal] providing environmental concerns and residents' concerns are managed properly"*
- *"Strobing of the blades on sun sets, noise, affecting our wildlife environment"*
- *"Some yes and some no. Is there any plan for site refurbishment at end of its commercial life? If so where are the funds to be held?"*

The Chair of Leswalt Community Association noted in their response that they: *"Overheard local residents complaining of the noise from turbines - more reassurance [is needed] on this"*

2.4 Second round of Community Engagement Events

2.4.1 Logistics

The second three community engagement events for the revised proposal for Larbrax Wind Farm were held on June 25 and 26 2024 at Stranraer Millennium Centre, Leswalt Memorial Hall and Portpatrick Village Hall respectively. These venues had worked well for the first round and so were used again.

2.4.2 Promotion



As per the first round, the events were subject of a newsletter maildrop, again delivered to the same 7,016 households in the Leswalt, Portpatrick and Stranraer areas. Details of the dates were also shared with attendees from the first round of events, as well as with local elected representatives, including community councils in operation. Posters were also placed at each of the exhibition locations in advance of the events.

2.4.3 Attendance

Four individuals attended the Stranraer Millennium Centre engagement event, eight attended Leswalt and nine attended at Portpatrick Village Hall. Three feedback forms were completed at Stranraer, five at Leswalt and five at Portpatrick. This gave a total of 18 completed forms (compared to 35 during the first round).

As per the first round of events, attendees were asked their reason for attending. Again, all were local residents. Four also indicated an interest in renewable energy.



The attendees were asked how they had found out about the event. 53.3% had received a newsletter through their door; 6.7% had seen an advert in the local newspaper; 6.7% indicated via the project website; 13.3% had received an email; 20% had heard via other means. Those attending were a mixture of “new faces” as well as those who had visited the first round of exhibitions and were keen to understand how the proposals had developed.

2.4.4 Consultation topics

The critical element of consultation during this round of events was to highlight a significant change in design - with up to four turbines being proposed as opposed to up to five during the first

round of engagement exhibitions during November 2023. The impact on the overall development was displayed, both in terms of anticipated output, but also on visual amenity, and logistics.

In tandem with the reduction in turbines, updates were also presented on changes in the design to cater for the:

- Removal of the permanent mast.
- Maximised use of existing roads (upgraded as needed).
- Reduction in the amount of new access track, from 4.2km to 2.5km.
- Reduction in the amount of permanent hardstanding needed – along with the restoration of land following construction.
- Reduction in the size of the borrow pit and substation compound to reduce impact.
- Reduction in the size of the temporary construction compound.
- Realignment of the entrance track – where possible – to reduce any impact on peatland.

A copy of the display panels can be found in **Appendix M**.

As at the first round, attendees were welcome to ask any questions of the project team and invited to give any other comments or questions.

2.4.5 Feedback

During this round, 100% of people who completed feedback forms said they found the information presented to be useful. Likewise, every attendee said they were, in general, supportive of proposals for the revised Larbrax Wind Farm.

Support was qualified with comments including:

- *“We will need renewable energy. Still suspicious of wind power as we have no control over when the wind blows. Could do with more battery capacity.”*
- *“As long as it stays within indicated limits and doesn't cost me money.”*
- *“As long as the local community benefits and hopefully ‘only’ four turbines.”*
- *“I think fewer turbines probably means less impact on the area, despite the turbines being taller than the original proposal.”*



Asked about the proposed layout and design, respondents commented:

- *“It appears to be less impact with higher output than previous.”*
- *“I think the revised layout is more favourable for the surrounding area.”*
- *“Understand the planned routes for during the build and implementation stages.”*
- *“Generally seems well thought out.”*
- *“Layout and visuals look good.”*
- *“I am curious how such large structures will make it to the site on such rural roads, but I suspect you are used to this problem.”*

Across the course of the two rounds of exhibitions, 96% of those who completed feedback forms said they found the information shared to be useful.

2.5 Common themes / community benefit

During all six community engagement events, consent of the previous proposals was clearly a factor in what felt to the project team like a general acceptance of the principle of development on the Larbrax Wind Farm site, albeit with people for and against that.

Common themes discussed across all of the exhibitions included those about visual impact, the logistics about getting the turbines to site and the number of cumulative wind turbines across wider Wigtownshire.

By far and away, however, the most frequently asked questions of the project team were around community benefit and how local organisations may be able to benefit should the revised proposals receive planning consent and be constructed.

While the project team were unable to enter into detailed discussion about this ahead of any planning decision being made, visitors were keen to make suggestions as to how the project's community benefit fund could be used. Organisations / events / scopes of work which people raised included:

- Leswalt Community Hall
- Digital connectivity upgrades
- Rhins coastal path (and general path upgrades)
- Aldouran Glen Wetland Gardens in Leswalt
- Portpatrick Community Development Trust
- Skiffeworlds Championship 2025
- Stranraer Watersports Association
- Stranraer Oyster Festival
- Portpatrick Harbour Trust
- Projects involving local schools and college students

Comments in this regard included:

- *"[The community benefit pot should be put forward to address impacts] that the wind farm may have affected? E.g. enhance other nature habitats"*
- *"Restoration of dilapidated buildings"*
- *"Make existing electricity supply more robust"*
- *"This is divisive in Kirkcolm. Be careful as it stokes division."*
- *"Yes - a number but equitable distribution needs to be established and not through community councils"*
- *"Feel that the community benefit is an essential feature. Local resources for local benefit - financial but also support of community groups."*

- *"Local community groups across SWSA, Wigtownshire. Not administered through just one community council area."*
- *"It was noted that if the community benefit fund were to be put towards energy bill discounts, that all households should benefit."*
- *"I want to see direct benefits for the near neighbours!"*

Particularly during the first round of exhibitions - in the middle of winter - a number of people commented that they would like to see a reduction in their own energy bills as a benefit from having the Larbrax Wind Farm close to them.

While none of these comments are a material factor in determining the current planning application, the level of comment on this during the exhibition left us of the view that these should be acknowledged as part of this report.

2.6 Dedicated contact details

Since the project was first introduced to the community, Orsted has provided dedicated contact details for the proposed project, including a direct phone number and email address. All enquiries fielded through these contact streams have been addressed by a member of the project team.

2.7 Project website

A dedicated project website has been updated throughout the process at www.larbraxwindfarm.co.uk.

The website is an additional communications channel to inform members of the public about the proposed development. The website has also hosted copies of the display panels from both rounds of community engagement exhibitions and the newsletters which have promoted them.

2.8 Engagement with locally elected representatives

We have kept local elected representatives informed about the progress of the proposals in emails as described above.

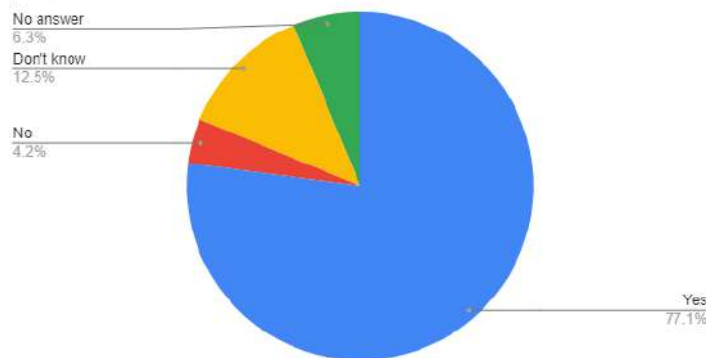
2.9 Follow-up activity

Following the conclusion of the events, we emailed all who have shared their contact details with us - either at events or via the website - to ensure they have sight of the latest boards exhibited during community consultation.

3. Impact of community engagement on proposed development

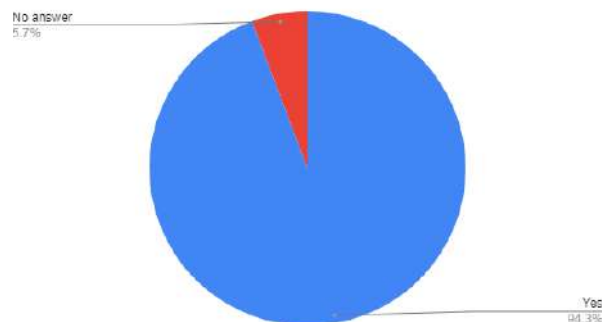
Across the six community exhibition events held there was a relatively high level of support for the project. 77% of attendees in total expressed general support for the proposals (note that some individuals attended both sets of events). A total of 4% said they were unsupportive. Others were either undecided or did not respond to the question.

In general, do you support the revised Larbrax Wind Farm proposal?



Furthermore, there was a clear local understanding among attendees from across the local community about the need for more renewable energy developments generally if Scotland is to meet its ambitions to reach net zero. 95% of those who completed feedback forms said they were supportive of renewable energy.

Do you support renewable energy?



This level of support has greatly encouraged the project team and confirmed that the scheme is one that people living nearby accept can have an important part to play in providing sustainable, reliable green energy.

The conversations during the consultation were incredibly important in confirming Orsted was developing a proposal which a majority of those who engaged with the team found to be acceptable, from their personal perspectives. The local knowledge shared has been important in sense-checking the plans as the proposals evolved between the exhibitions as a result of direct landowner dialogue and other third-party discussions. Design changes during this process have been influenced by a variety of reasons, including the feedback received from local residents.

Crucially, following a number of years of inactivity following approval of the previously consented project, this allowed Orsted to reestablish contacts within the communities closest to the proposed revised Larbrax Wind Farm and to hear their views.

Orsted is committed to ongoing engagement with community groups so that views can be taken on-board. The firm wants to be a positive partner in the community.

4. Conclusion

This community report has provided an account of the pre-planning consultation undertaken by Orsted for the revised Larbrax Wind Farm proposal.

The consultation process has been an extremely valuable exercise and has provided important intelligence surrounding issues, concerns and questions amongst the local community. Critically, it has given the development team a chance to respond directly to many of them, hopefully allaying reservations among at least some of the exhibition attendees.

From the outset of the previously consented wind farm, Orsted has committed to active engagement, consultation and dialogue with the local community and is committed to continuing to do so throughout the planning, construction and operational process for the proposed development.

Annex

Appendix A - Site Location Map

Appendix B - Introductory email to local stakeholders

Appendix C - Autumn 2023 newsletter (on community noticeboard at Leswalt Memorial Hall)

Appendix D - Digital advertising campaign

Appendix E - Round one exhibition print advert (Galloway Gazette)

Appendix F - Larbrax project website

Appendix G - Round one exhibition boards

Appendix H - Spring / summer 2024 newsletter

Appendix I - Newspaper adverts for second round of consultation events - Stranraer & Wigtownshire Free Press

Appendix J - Round 2 event poster

Appendix K - Email highlighting second round of exhibitions

Appendix L - Feedback form for first round of consultation events

Appendix M - Exhibition boards for second round of consultation events

Appendix N - Feedback form for second round of exhibitions

Appendix O - Post-round two exhibition email to those who registered for updates

Appendix A - Site Location Map



Appendix B - Introductory email to local stakeholders

BY EMAIL ONLY

26 October 2023

Notification of Public Exhibitions – Revised Larbrax Wind Farm Proposal

Further to my letter earlier this month regarding the submission of the Proposal of Application Notice (PoAN) for the revised Larbrax Wind Farm proposal to Dumfries and Galloway Council, I write to advise that we will shortly hold public exhibitions to display our proposal to the community, and to seek their feedback.

The public exhibitions will take place as follows:

Monday 6 November

3pm-7pm - Leswalt Memorial Hall

Tuesday 7 November

10am-1pm - Stranraer Millennium Centre

3pm - 7pm - Portpatrick Village Hall

If you or a colleague are able to attend I hope we might see you at the events to discuss our proposal and any questions that you may have.

To ensure that the community are well-informed of our plans and the exhibition events, we have this week written to residents inviting them to attend the exhibitions via the attached newsletter. We have also advertised the exhibitions in the following publications:

- Galloway News
- Dumfries and Galloway Standard
- Stranraer and Wigtownshire Gazette
- Galloway Gazette.

I attach a poster containing details of the events which can be shared on social media, or printed out and displayed locally, should you be able to do so.

To provide some background on the proposal, between 2013-2016, a proposal for Larbrax Wind Farm was consulted on and submitted to Dumfries and Galloway Council, which was ultimately consented at appeal by the Scottish Government in 2016.

From 2016-2023, work has been underway to make the project both technically and commercially viable, including discussions with turbine suppliers about the procurement of the consented turbines, and Scottish Power Transmission on the proposed grid connection. The culmination of this work is the revised proposal for Larbrax Wind Farm.

Ørsted is now progressing the revised proposal for Larbrax Wind Farm which addresses technical and commercial barriers and, if approved, would make a valuable contribution to Scotland's renewable energy and climate change goals, while returning community and economic benefits to the local area.

The revised proposal consists of:

- Up to five wind turbines
- Each up to 149.9m in height
- Generating over 20MW of clean, green energy
- Delivering £5,000 per MW of installed wind energy capacity, equating to ~£120,000 in annual community benefit for the local area.

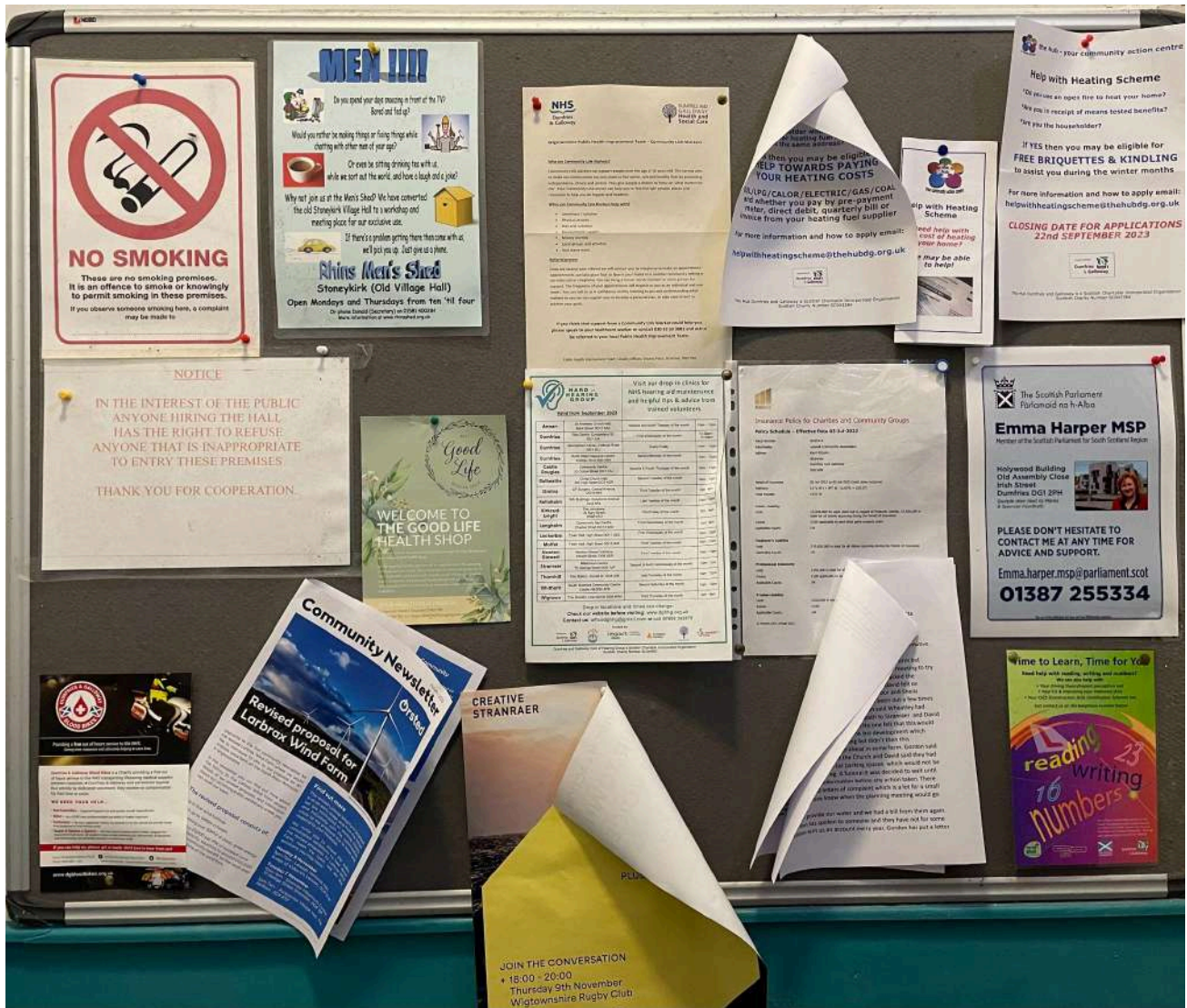
We are committed to engaging closely and inclusively with the communities close to the proposed site to listen and respond to feedback on the proposal and the associated community benefit opportunities. We hope you will be able to attend the upcoming exhibitions, but should you have any questions or wish to discuss the proposals in the meantime, please do not hesitate to contact me on the email addresses undernoted.

Yours sincerely

Dominic Rams
Project Developer
Ørsted Onshore UK Limited

Email: domra@orsted.com, larbax@orsted.com

**Appendix C - Autumn 2023 newsletter
 (on community noticeboard at Leswalt Memorial Hall)**



Appendix D - Digital advertising campaign

Revised Larbrax Wind Farm Proposal Public Exhibitions

GeoFlex Advert by MESSAGE MATTERS LTD



Ørsted is developing a revised proposal for Larbrax Wind Farm, located on the North Rhins Peninsula in Wigtownshire. Monday 6th 3pm-7pm. Tuesday 7th 10am-1pm & 3pm-7pm

[Find Out More](#)

Appendix E - Round one exhibition print adverts

Galloway Gazette

22 DNG MEDIA

www.dng24.co.uk

Friday, October 27, 2023

Market Place

BLINDS

CB BLINDS LOCKERBIE
07941 255326

FREE NO OBLIGATION APPOINTMENTS
FAST LOCAL SERVICE
ALL AREAS COVERED
BLINDS FOR ALL BUDGETS
CONSERVATORY SPECIALISTS
ALL WORK FULLY GUARANTEED
ALL TYPES OF BLINDS MADE AND FITTED TO MEET YOUR REQUIREMENTS
WE ARE ACTIVE MEMBERS OF THE FRAME IS SAFE CAMERON
ENGLAND BLINDS GUILD WORLDWIDE
WWW.CBBLINDS.CO.UK

DATS BLINDS
3 Blinds for £120
(70 x 50)

Your local Manufacturer of top quality Blinds
FAST efficient Service
Special offers on : Perfect fit blinds ideal
Conservatory blinds : for tilt & turn windows
Vertical, Venetian, Roller, Roman, Blackout,
Wooden Venetians, Pleated, Velux, Fly Screens
For a free, no obligation survey and
to view our extensive range call
01461 20 48 42 or
01461 20 61 48
Or text your name and contact number to
077 382 192 88
www.datsblinds.co.uk

Visit our website
www.dng24.co.uk

Public Notices



**REVISED LARBRAX WIND FARM PROPOSAL
Public Exhibitions**

Orsted is developing a revised proposal for Larbrax Wind Farm, located on the North Rhine Peninsula in Wigtownshire.

The revised proposals address technical and commercial barriers to delivering a previous, consented proposal for Larbrax Wind Farm which was consulted upon between 2013-2016, and consist of:

- ➔ Up to five wind turbines
- ➔ Each up to 149.0m in height
- ➔ Generating over 20MW of clean, green energy
- ➔ Delivering £5,000 per MW of installed wind energy capacity, equating to ~£120,000 in annual community benefit for the local area.

We invite you to attend the public consultation exhibitions to hear about the revised proposals for Larbrax Wind Farm, meet the team and ask questions.

Monday 6 November

3pm-7pm
Lizewalt Memorial Hall,
Bridges of Aldoumen,
Lizewalt, DG5 6LW

Tuesday 7 November

10am-1pm
Stranraer Millennium Centre,
78 George Street,
Stranraer, DG5 6DX
3pm-7pm
Portpatrick Village Hall,
The Harbour, DG5 6TZ

Get in touch

If you would like to comment, email larbrax@orsted.com or telephone 0131 243 9100.
For further information visit www.larbraxwindfarm.co.uk.

Please note that comments made to Orsted are not representative to the planning authority. Responsibilities for the planning authority need to be made once the planning application has been submitted to Dumfries & Galloway Council.

PLANNING

The applications, associated plans and documents can be viewed on-line by following the ePlanning link on the Council's website at www.dumgal.gov.uk/planning. Written comments may be made to Head of Economy and Development by email to Planning@dumgal.gov.uk or via the Council's website, as noted above, by 10.11.2023 (Type A)
Town and Country Planning (Scotland) Act 1997 as amended
Town and Country Planning (Development Management Procedure) (Scotland) Regulations 2013, Reg 20(1) (A)
Ref No/Type Address/Proposal
231846/FUL(A) Site adjacent to Corslie Road, Newton Stewart - Erection of 75 dwellings with roof mounted solar panels, formation of new access, internal road and footpath layout, 154 car parking spaces, outpound, service infrastructure and landscaping
232007/APP(A) Land to South East Of Carsluith Bridge, Carsluith, Newton Stewart - Proposed residential development (4 dwellings/202)

www.dumgal.gov.uk Dumfries & Galloway

CASHMAKERS

- | HOUSEHOLD | HOUSEHOLD |
|---|--|
| 1 PAIR OF LAITIA A SHLEY CURTAIN each curtain 104" w. x 80" Long, cream and blue colour, thick blackout lining £26 Tel: 01887 29587 | 2 MATCHING BEDSIDE LAMPS (brass) £8 Tel: 07961221558 |
| SMALL METAL SHELF UNIT shaped like a boat VGC £15 Tel: 01887 29587 | SHOE RACK (metal) £8 Tel: 07961221558 |
| COFFEE MACHINE Delonghi Nespresso, Dale Gusto, java, red, hot or cold, excellent condition £15 Tel: 07961221558 | SMALL OAK umbrella/walking stick stand + alm bedside lamp/telephone table £9 Tel: 07961221558 |
| CLOTHES M & S PER UNA COAT, PURPLE COLOUR, NEVER WORN, SIZE 14 £10 TEL: 07961468670 | MISC LARGE BRASS BELL 55 years old, ideal for a door/conservatory, when doors open it rings. Mechanical £55 TEL: 07961468670 |

TO ADVERTISE
in our
BUY AND SELL SECTION
Contact our Sales Team
Call: 01461 202078
E-mail: sales@dngonline.co.uk
Dngmedia

Recruitment

Currently Recruiting

Purchase Ledger Clerk *£Negotiable*
We are looking for a Purchase Ledger Clerk to join our small, friendly team. You'll work accurately, have a close attention to detail, be a good communicator with intermediate Microsoft Office skills and an understanding of Purchase Ledger. The successful candidate will ideally also have experience in company payroll processing. Other areas on which you will be concentrating include bank and cash accounts, company vehicle and finance administration.

Trainee Contracts Engineer *£Negotiable*
Reporting to, and working under the guidance of the Contracts Team Manager, you'll assist in project managing the company's boiler and related projects. The successful candidate will play a pivotal role in seeking contracts through to completion to specification, within budget and on time - while maintaining margins and further build customer satisfaction. The aim is to develop the candidate into a good team player gaining commercial awareness, knowledge of HSE and CDM regulations and excellent communication skills. Driving licence required.

Employee Benefits: 17 days holiday (including 8 Bank Holidays) (2) 25 days' Annual leave plus 8 Bank Holidays (3) Pension scheme with a generous 7% employer contribution (after a 3-year period) (4) Personal development opportunities (5) Access to an Occupational Health Advice

Email your CV and covering letter to hr@cochrn.co.uk
www.cochrn.co.uk Applications close Friday 10 November 2023. Strictly NO Agencies please.

COCHRAN

Sir Robert McALPINE

MOTORWAY MAINTENANCE OPERATIVE

Sir Robert McAlpine Ltd are the routine operations and maintenance contractor for the section of the A74(M) / M74 between the Border and Junction 12 and are seeking Motorway Maintenance Operatives for both our Depots at Eaglesfield, DG11 3LE and Crawford, ML12 6TW to carry out various duties relevant to Motorway Maintenance.

DESCRIPTION
The successful candidate must have an LGV2 Driving Licence minimum - with Driver CPC.
Experience of traffic management/safety fence and winter road maintenance an advantage.
Must be able to attend any incident within one hour of a call.
Preferably hold a CPC/SCS Card.

MAIN TASKS
Attending road accidents. Litterpicking. Repair safety fence. Cycle Maintenance. TM for various site operations.

WINTER MAINTENANCE
24 hours Standby Rota. Winter maintenance on a shift basis. Salting. Ploughing.
Overtime may be required to carry out all the above duties and Operatives must be willing to work in all weathers.

Sir Robert McAlpine Ltd is an equal opportunities employer and positively encourages applications from suitably qualified and eligible candidates regardless of sex, race, disability, age, sexual orientation, gender reassignment, religion or belief, marital status, or pregnancy and maternity.

If you wish to apply please call 01576 205200 - Sir Robert McAlpine, M6 Project Office, Nethercleuch, Lockerbie, DG11 2SQ for an Application Form.

Stranraer & Wigtownshire Free Press

news@stranraer-freepress.co.uk

October 26, 2023 5



Above: waves crash over the harbour wall and on to Cailness Road Drummore

STORM BABET SKIRTS SOUTH WEST

"THANKFULLY the devastation wreaked by Storm Babet on some parts of Scotland didn't happen here.

But strong winds associated with the storm battered Wigtownshire last Friday with the coastline affected by high waves.

Protective barriers were flattened at the road works currently underway on Charlotte Street in Stranraer.

The A716 road to Drummore was closed but not due to the weather, but because of a serious road traffic collision.

A spokesperson from

Dumfries and Galloway Council said: "The A716 was not closed for flooding last Friday 20 October as there were no Flood Alerts for West Luce Bay.

"However, Dumfries and Galloway Council at the request of Police Scotland closed the A716 due to a road traffic collision on the route. The Council received request to close the road at 21:00 on Friday 20 October. The road was closed between the C37n at Sandhead and the C5n at Ardwell.

"The closure was removed at 15:00 on Saturday."



Above: Luce Bay looking east towards Port William from Ardwell Slip

Homes here £31,000 cheaper than rest of Scotland

By David Dubas-Fisher and Marc McLean
Local Democracy Reporters

HOUSE prices in Dumfries and Galloway are on average £31,000 cheaper than elsewhere in Scotland.

The average home in Dumfries and Galloway cost £183,039 in the 12 months to August, according to new data from the Land Registry.

That's up one per cent from July, however it's a 2.3 per cent drop from the same period last year.

Meanwhile, the average home in Scotland cost £194,156 in the 12 months to August - £31,117 more than the average property here.

Now sitting 24th out of the 32 council areas for house price valuations, Dumfries and Galloway is one of the least expensive places to buy a home in Scotland.

The only cheaper places to buy a house in Scotland, on average, are: Renfrewshire (£155,628), Dundee (£151,945), City of Aberdeen (£141,119), North Lanarkshire (£139,569), West Dunbartonshire (£134,682), Inverclyde (£129,373), North Ayrshire (£126,663), East Ayrshire (£123,571).

Meanwhile, the top five regions for most expensive house prices are: East Lothian (£336,885), Edinburgh (£335,615), East Renfrewshire (£286,227), East Dunbartonshire (£287,046), and Stirling (£246,817).

Average UK house prices increased by 0.2% in the 12 months to August 2023.

East Lothian has seen the largest year-on-year rise of any local authority in the UK.

The average home there sold for 15.4 per cent more in the 12 months to August compared to the previous year.



Above: works barriers blown over in Charlotte Street

Winter heating consultation launched

SOUTH Scotland SNP MSP Emma Harper has urged residents of Dumfries and Galloway to take part in the Scottish Government's consultation on the introduction of the new Pension Age Winter Heating Payment.

From winter 2024, the Pension Age Winter Heating Payment, which will be an annual payment, will replace the UK government's Winter Fuel Payment in Scotland. Ms Harper has said that it is crucial that rural voices across Dum-

fries and Galloway are heard in shaping how this payment will be delivered.

The Scottish Government's consultation seeks to understand who should be eligible for this payment, when and how it should be delivered, and what measures can be put in place to support those living off the gas grid. The consultation closes on January 15, 2024.

Emma Harper said: "The new Pension Age Winter Heating Payment delivered by the SNP Government will help over one million

pensioners in Scotland with their heating costs, including thousands of people here in Dumfries and Galloway. It is therefore crucial that we ensure rural voices across Dumfries and Galloway are heard in shaping how this payment will be delivered and who it will be delivered to."

Consultation can be completed here: Pension Age Winter Heating Payment - Scottish Government consultations - Citizen Space

orsted

REVISED LARBRAX WIND FARM PROPOSAL

Public Exhibitions

Monday 6 November
3pm-7pm
Liquist Memorial Hall,
Bridge of Alderson,
Larbrax DD9 6JW

Tuesday 7 November
10am-1pm
Stranraer Millennium Centre,
73 George Street,
Stranraer DD9 3JX

3pm-7pm
Portpatrick Village Hall,
The Harbour, DD9 8TZ

Get in touch
If you would like to comment, email larbrax@orsted.com or tele phone 0131 343 0100.
For further information visit www.larbraxwindfarm.com

Please note that consultation will be closed once representatives to the planning authority on the wind farm development application have been indicated to Scottish & Galloway Council.



Galloway News

www.gallowaynews.co.uk

InYourArea.co.uk

26.10.2023 7

Fatal crash

STEPHEN TEMLETT

A 35-year-old woman died following a crash in the west of the region on Friday night.

Police are appealing for information following the incident which happened at around 8.30pm on the A716 Cornerhouse to Drummore road, near Ardwell.

Emergency services attended the scene but the woman, who has not yet been named by police, was pronounced dead.

The road was closed for several hours while investigations were carried out into the crash.

The woman was driving a white Mini Cooper and officers are appealing for anyone with dash-cam footage from the area at the time to contact them.

Sergeant David Kerr said: "Our thoughts are with the family of the woman who died and our enquiries are ongoing to establish the full circumstances.

"Anyone who saw what happened or who has dash-cam footage that could help with our investigation is asked to get in touch.

"In particular we are keen to speak to anyone who may have been travelling on the A716 at the time leading up to the crash happening. Please contact us if you have footage or any other information."



Nine stone pumpkin Izabella with the massive specimen which was auctioned to raise £40 for Sands



Pumpkin festival fun

A pumpkin festival took place at Kirkcudbright Scout Hall on Sunday.

The Scouts and Girl Guides, as well as groups that use the hall, organised the event, raising more than £450 for the upkeep of the building.

There were a variety of categories for all ages and abilities. And a massive nine stone pumpkin was auctioned off afterwards, raising £40 for the Sands charity.



Welcome Volunteers at the entrance

Value in local house prices

DAVID DUBAS-FISHER AND MARC MCLEAN

House prices in Dumfries and Galloway are on average £31,000 cheaper than elsewhere in Scotland.

The average home in Dumfries and Galloway cost £163,039 in the 12 months to August, according to new data from the Land Registry.

That's up one per cent from July, however, it's a 2.3 per cent drop from the same period last year.

Meanwhile, the average home in Scotland cost £194,166 in the 12 months to August - £31,117 more than the average property in the region.

Now sitting 24th out of the 32 council areas for house price valuations, Dumfries and Galloway is one of the least expensive places to buy a home in Scotland.

The only cheaper places to buy a house in the country, on

average, are: Renfrewshire (£155,828), Dundee (£151,946), City of Aberdeen (£141,119), North Lanarkshire (£139,569), West Dunbartonshire (£134,682), Inverclyde (£129,373), North Ayrshire (£126,663) and East Ayrshire (£123,571).

Meanwhile, the top five regions for most expensive house prices are: East Lothian (£336,885), Edinburgh (£335,815), East Renfrewshire (£286,227), East Dunbartonshire (£267,045) and Stirling (£245,817).

Average UK house prices increased by 0.2 per cent in the 12 months to August 2023.

East Lothian has seen the largest year-on-year rise

of any local authority in the UK.

The average home there sold for 15.4 per cent more in the 12 months to August compared to the previous year.

In Rutland, houses sold for 13.3 per cent more, while in Harborough they cost 12.2 per cent more, in Nairn-Eileanan Siar 11.8 per cent more and in Newcastle upon Tyne 8.2 per cent more.

Hastings and the London borough of Kensington and Chelsea saw the largest price drops, with homes in both local authorities falling by 10.4 per cent in the 12 months to August, according to the Land Registry data.

In the Shetland Islands prices fell by 7.6 per cent and in the Orkney Islands by 7.3 per cent.



Orsted

REVISED LARBRAX WIND FARM PROPOSAL

Public Exhibitions

Orsted is developing a revised proposal for Larbrax Wind Farm, located on the North Rhins Peninsula in Wigtownshire.

The revised proposals address technical and commercial barriers to delivering a previous, consented proposal for Larbrax Wind Farm which was consulted upon between 2013-2015, and consist of:

- ➔ Up to five wind turbines
- ➔ Each up to 149m in height
- ➔ Generating over 20MW of clean, green energy
- ➔ Delivering £5,000 per MW of installed wind energy capacity, equating to ~£120,000 in annual community benefit for the local area.

We invite you to attend the public consultation exhibitions to hear about the revised proposals for Larbrax Wind Farm, meet the team and ask questions:

Monday 6 November

3pm-7pm

Leswalt Memorial Hall, Bridge of Aldouran, Leswalt, DG9 0LW

Tuesday 7 November

10am-1pm

Stranraer Millennium Centre, 75 George Street, Stranraer, DG9 8DX

3pm-7pm

Portpatrick Village Hall, The Harbour, DG9 8TZ

Get in touch

If you would like to comment, email larbrax@orsted.com or telephone 031 243 9100. For further information visit www.wlarbraxwindfarm.co.uk

Remember that comments made to Orsted are confidential to the planning process. For representation to the planning authority on Larbrax you will need to submit an application to Dumfries & Galloway Council.

Dumfries & Galloway Standard

www.dumfriesandgallowaystandard.co.uk

InYourArea.co.uk

27.10.2023 7



Fundraising drive Provost Maureen Johnstone and members of the Dumfries and Maxwelltown British Legion Scotland branch, volunteers and civic dignitaries launched the annual Scottish Poppy Appeal for the region on Friday. Inset, the new look poppy. Main picture courtesy of Rommie Galloway.

British Legion launch annual poppy appeal

Fundraising in Dumfries and Galloway for the annual Scottish Poppy Appeal was officially launched in the foyer of the Loreburne Centre on Friday.

Members of the Dumfries and Maxwelltown British Legion Scotland branch, volunteers and civic dignitaries, including Provost Maureen Johnstone, were at the launch.

Branch members and volunteer supporters will be manning the stall in the centre, near Marks and Spencer every day except Sundays until November 11, to allow people to buy purchase poppies and assorted decorative metal badges.

Money raised from the appeal helps thousands of Armed Forces personnel, veterans and their families every year on issues including homelessness, financial support and mental health.

The region usually raises between £18,000 to £20,000 for the appeal with poppies in shops, schools and other outlets.



The iconic pin on poppy used for remembrance has been given a make-over this year by Poppy Scotland and the new version is completely plastic-free and able to be recycled.

It is made from paper and will no longer have a single-use plastic stem or centre, after three years of work to make it economical, sustainable, and less impactful on the environment.

The plastic-free poppy will be available alongside remaining stocks of the old one to reduce any waste.



Industrial unrest Workers at the DuPont site in Dumfries are taking strike action today.

Staff walk out over pay row

JACKIE GRANT

Workers at a Dumfries factory are resuming strike action today as a row over pay rumbles on.

Unite the union has announced that 100 members of staff at DuPont Teijin Films (DTF) will walk out from today until November 5.

As well as the six rounds of stoppages, a continuous overtime ban has also been in place since July.

Unite has accused DuPont management of by-passing the agreed collective bargaining procedures, and the workforce's trade union representatives, to impose a 3.3 per cent wage offer in April.

And it is warning that unless they get back round the negotiating table with a "serious offer", disruption at the plant could last for months.

Unite general secretary Sharon Graham, said: "DTF has millions in the bank yet it is trying to impose a paltry 3.3 per cent offer backdated to April when inflation was three times that figure."

"More strikes at the plant are inevitable unless the company gets back round the table with a serious offer to resolve this dispute."

"We will fully support our DTF members in the fight for better jobs, pay and conditions."

The new wave of strike action follows the stoppages taking place on September



More strikes warning Unite general secretary Sharon Graham

20, 22, 24, 26 and 28.

DTF announced its annual accounts on October 16 indicating that profit after taxation climbed to £5.8m, up from £2.8m in 2021. The company's European manufacturing sites are based in Dumfries and Luxembourg, with its Global

Innovation Centre located in Teesside.

Andy Macfarlane, Unite Industrial officer, added: "DTF more than doubled their profits over the last year to £6.8m. Instead of rewarding the workforce, the company is imposing a real terms wage cut."

"There has been little movement by DTF in addressing issues over different rates of pay, shift allowances and holiday entitlements among workers."

"Talks are scheduled with DTF and there is one last opportunity for management to resolve these outstanding issues."

"If not, strike action could last for months, causing massive disruption to the plant."



REVISED LARBRAX WIND FARM PROPOSAL

Public Exhibitions

Orsted is developing a revised proposal for Larbrax Wind Farm, located on the North Rhins Peninsula in Wigtownshire.

The revised proposals address technical and commercial barriers to delivering a previous, consented proposal for Larbrax Wind Farm which was consulted upon between 2013-2015, and consist of:

- ➔ Up to five wind turbines
- ➔ Each up to 149m in height
- ➔ Generating over 20MW of clean, green energy
- ➔ Delivering £5,000 per MW of installed wind energy capacity, equating to ~£120,000 in annual community benefit for the local area.

We invite you to attend the public consultation exhibitions to hear about the revised proposals for Larbrax Wind Farm, meet the team and ask questions:

Monday 6 November

3pm-7pm

Leswalt Memorial Hall, Bridge of Aldouran, Leswalt, DG9 0LW

Tuesday 7 November

10am-1pm

Stranraer Millennium Centre, 75 George Street, Stranraer, DG9 8DX

3pm-7pm

Portpatrick Village Hall, The Harbour, DG9 8TZ

Get in touch

If you would like to comment, email larbrax@orsted.com or telephone 031 243 9100.

For further information visit www.larbraxwindfarm.co.uk

Removal of consent under the Electricity Act 1989 does not constitute a guarantee or representation by the planning authority or licensee over the planning application has been submitted to Dumfries & Galloway Council.

More strikes are inevitable unless the company gets back round the table

Appendix F - Larbrax project website



About the Project

The Revised Larbrax Wind Farm is a revision of the consented Larbrax Wind Farm, an onshore wind farm on the North Rhins Peninsula in Wigtownshire.

Between 2013-2016, a proposal for Larbrax Wind Farm was consulted on and submitted to Dumfries and Galloway Council, which was ultimately consented at appeal by the Scottish Government in 2016.

This revised proposal for Larbrax Wind Farm addresses the technical and commercial barriers which prohibited delivery of the original proposal.

The revised proposal consists of:

- Up to 4 wind turbines
- Each up to 149.9m in height
- Generating 20MW of clean, green energy
- Delivering £5,000 per MW of installed wind energy capacity, equating to £100,000 in annual community benefit for the local area



www.larbraxwindfarm.co.uk

Appendix G - Round one exhibition boards

1. Introduction

Welcome and thank you for visiting this public exhibition for the revised Larbrax Wind Farm. Through this exhibition you can learn about Ørsted, find out what the revised Larbrax Wind Farm proposals are, the associated community benefit opportunities, and provide your valued feedback.

About the Project

The revised Larbrax Wind Farm is a revision of the consented Larbrax Wind Farm, an onshore wind farm on the Rhins Peninsula.

Between 2013-2016, a proposal for Larbrax Wind Farm was consulted on and a planning application was submitted to Dumfries and Galloway Council. The planning permission was granted on appeal by the Scottish Government in 2016. From 2016-2023, a number of efforts have been made to make the project both technically and commercially viable, including discussions with turbine suppliers and Scottish Power with regards to the procurement of the consented 100m tip turbines and the proposed grid connection. The culmination of this work behind the scenes is the revised proposal for Larbrax Wind Farm, which will significantly improve the efficiency and buildability of the project.

Ørsted is now progressing this revised proposal for Larbrax Wind Farm which addresses technical and commercial barriers and, if approved, would make a valuable contribution to Scotland's renewable energy and climate change goals, while returning community and economic benefits to the local area.

The revised proposal consists of:

- Up to five wind turbines;
- Each up to 149.9m in height;
- Generating over 20MW of clean, green energy;
- Delivering £5,000 per MW of installed wind energy capacity, equating to ~£120,000 in annual community benefit for the local area.

Working with You

This is the first of two rounds of public consultation which we will undertake before preparing the final planning application for the revised Larbrax Wind Farm. Your feedback is vital to our approach to the project, and we would encourage you to fill in the provided questionnaire when you have viewed the exhibition materials. Members of our team are also on-hand to answer any questions you may have.

The information presented in this exhibition can also be found online at: www.larbraxwindfarm.co.uk.

You can contact our team at any time:

E: larbrax@orsted.com

T: 0131 243 9100

P: Ørsted, 2nd Floor, 2 Lochrin Square, 96 Fountainbridge, Edinburgh EH3 9QA

Please note that an application has not yet been submitted, therefore, comments made in response to this consultation are not representations to Dumfries and Galloway Council but to Ørsted as the applicant. Members of the public will have the opportunity to submit comments to the council when the application has been submitted (see Board 14b).



2. About Us

Ørsted is one of the world's most sustainable energy companies and is helping Scotland and the UK deliver on their net-zero ambitions while achieving all the economic, social and environmental benefits that come with that. Headquartered in Denmark, Ørsted is active across Europe, the USA and Asia. Since 2018, Ørsted has expanded significantly and now has a portfolio of 8.2 Gigawatts (GW) of operating and under construction capacity across wind, solar, and energy storage. Our target is to have 17.5 GW of installed onshore wind, solar, and storage capacity across our markets by 2030. In June 2021, Ørsted acquired Brookfield Renewable UK (BRUK), which subsequently was re-branded to Ørsted Onshore UK Ltd.

Already the global leader of offshore wind, we are expanding our onshore wind portfolio

Ørsted has an established track record in Scotland through our existing and consented onshore wind farms:

- Kennowhead Wind Farm Cluster in South Lanarkshire - Phase 1, consisting of 13 turbines (176.5 m in height) with a generating capacity of 62.4 megawatts (MW) is currently operational.
- Phase 2, consisting of 22 turbines (up to 220 m in height) and a generating capacity of up to 112 MW, is consented.

We are developing new energy systems for the future, building skills and creating jobs, all whilst ensuring positive impacts on nature. You can read more about our proposed community benefits on Board 7.

Our footprint in United Kingdom and Ireland

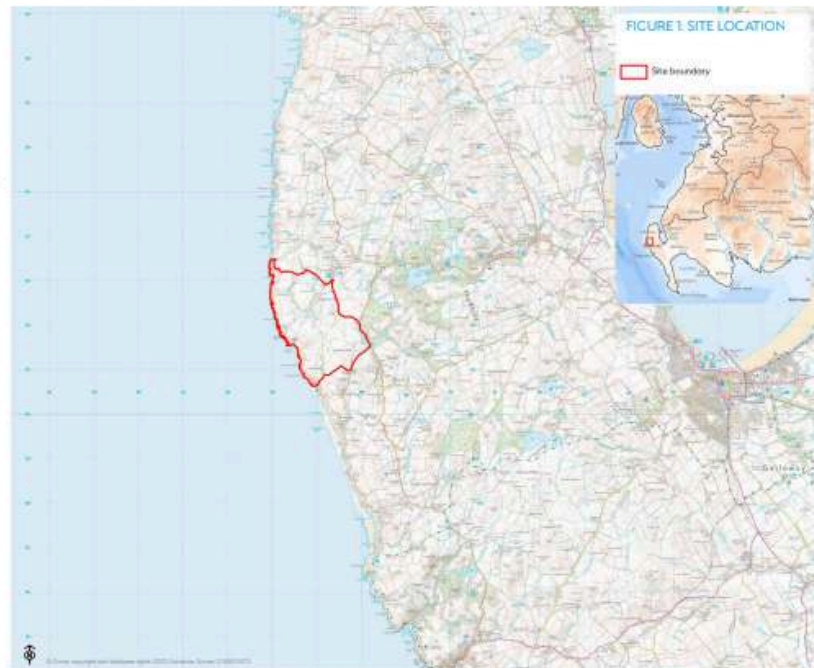


3. Site Context

Site Location

The revised Larbrax Wind Farm is located approximately 9 km west of Stranraer in Dumfries and Galloway, and is a re-design of the consented Larbrax Wind Farm for which planning permission was granted on appeal in 2016. The proposed site lies in a remote area in the western edge of the Rhins Peninsula. The site is relatively low-lying, sloping from east to west towards the coast. The highest point of the site is Hind Hill on Goldenoch Moor at around 82m, as well as an unnamed hill of 83m on Larbrax Moor.

Land within the site is mainly used for grazing livestock with some small woodland plantations being used as shelterbelts. Properties within the surrounding area are mainly single rural dwellings, farmhouses and holiday cottages which are scattered throughout the area.



4. Proposals

Proposals

The current planning permission for Larbrax Wind Farm allows for eight turbines each of up to 100 m in height. However, given advancements in turbine technology the consented wind farm is unlikely to be commercially viable. As the site is very windy it is the perfect spot to install a wind farm, so we are now seeking to revise the Larbrax Wind Farm proposal in order to optimise the potential energy output from the site and retain a commercially viable scheme whilst using fewer and much more efficient, but taller turbines.

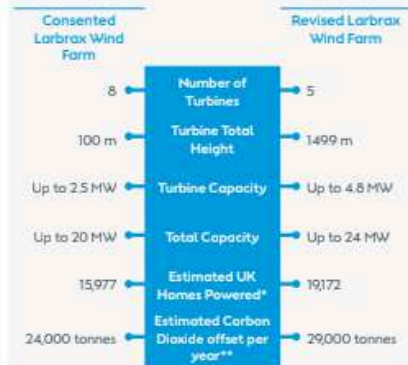
We will be applying to Dumfries and Galloway Council for planning permission to construct and operate the revised Larbrax Wind Farm.

The current proposals comprise:

- Up to five wind turbines, each with a maximum height of up to 149.9 m;
- Foundations supporting each wind turbine;
- Associated crane hardstandings at each turbine location;
- A network of on-site access tracks and associated watercourse crossings;
- A network of underground cables to connect the turbines to the on-site substation;
- A control building and electrical substation;
- An Energy Storage System;
- A permanent anemometer mast for wind monitoring, including associated foundations and hardstandings;
- Temporary construction compound(s); and
- Temporary on-site borrow pits (quarries) for winning stone during construction.

It is Ørsted's intention to use the consented Larbrax Wind Farm infrastructure layout as much as possible. The infrastructure layout will, however, be dictated by the final positions of the turbines, the larger turbine hardstandings as well as environmental and technical constraints.

Comparison of Homes Powered and CO₂ Offset Per Year



*Based on the latest Department for Energy Security and Net Zero (DESNZ) and Digest of UK Energy Statistics (DUKES) figures, which provide an average UK annual household electrical consumption of 3,509 kWh and indicative 'all wind' capacity factor of 32%. In reality the larger turbines will have an increased capacity factor.

**Use: DESNZ 'all fossil fuels' emissions statistic of 446 tonnes of carbon dioxide per GWh of electricity supplied in the Digest of UK Energy Statistics (July 2023) Table 5.14



5. Current Turbine Layout and Consented Layout





6. Access, Programme and Preservation and Enhancement of Nature

Access

The site will be accessed from a new junction with the B738, located on the eastern part of the site. Traffic will then drive west into the site. General construction vehicles will come from the north via the A77 and the east via the A75. Vehicles transporting turbine components are expected to travel south from King George V Docks in Glasgow via the M8, M74, A74(M) and M6 (existing at Junction 42) then back north on M6 (existing at A74(M) junction 22 at Gretna Green). Vehicles will then travel west via the A75 to Stranraer, south along the A77 to Portpatrick then north on the B738 to the site entrance. Construction materials will be sourced from local quarries where this cannot be fully sourced from borrow pits within the site.



A Construction Traffic Management Plan (CTMP), Staff Travel Plan and Abnormal Loads Traffic Management Plan will be agreed and implemented in consultation with the local roads authority to manage traffic movements and minimise effects on local communities during construction.

Revised Larbrax Wind Farm www.larbraxwindfarm.co.uk

Construction

It is estimated that it will take approximately 12 months to construct the revised Larbrax Wind Farm. Construction works will include the following main activities, most of which will be undertaken concurrently to reduce disruption to those living in the local area:

- Working of borrow pits (small quarry);
- Construction of temporary construction compounds;
- Construction/upgrading of site access tracks, site access junction on B738, passing places and any watercourse crossings;
- Construction of culverts under tracks to facilitate drainage and maintain existing hydrology;
- Construction of turbine foundations;
- Construction of onsite control building, substation and energy storage system compound
- Excavation of trenches and cable laying adjacent to site tracks;
- Delivery and erection of wind turbines and energy storage batteries;
- Construction of a network of underground cables to connect turbines to the onsite substation;
- Commissioning of wind farm (assuming grid connection is in place);
- Restoration of temporary construction areas; and
- Implementation of habitat management and enhancement proposals.

Operation

Planning permission will be sought for an operational period of 35 years. During the operational phase it is expected that there will be very little traffic generated by the project, and this will be limited to general maintenance visits. Towards the end of the operational period, a decision will be made as to whether to refurbish, remove, or replace the turbines. If refurbished or replaced, this would be subject to a new planning application.

Nature Preservation and Enhancement

We are investigating opportunities for habitat restoration and enhancements to help compensate for habitat loss as a result of the revised Larbrax Wind Farm. These measures may use areas of the site which are not being developed. The aim will be to achieve a biodiversity net gain within the site (i.e. leave the current nature resource on the site in a better state than it was before the revised Larbrax Wind Farm). Working with our ecology and peatland specialists, we will prepare an Outline Biodiversity Enhancement and Management Plan (OBEMP) for the site and this will accompany the planning application. Measures proposed will be agreed with Dumfries and Galloway Council and NatureScot as statutory consultees before they are implemented should the application be approved.





7. Community Benefits

Ørsted is dedicated to being an active partner in the communities where we develop, build, operate and own green energy assets such as onshore wind farms. In Scotland, we offer a community benefit programme committed to supporting communities close to our wind farm sites. We're keen to support local community projects wherever we can.

Community Benefit

Throughout the operational lifetime of the revised Larbrax Wind Farm, Ørsted will pay £5,000 per installed MW into a community development fund – equating to approximately £10,000 per year or £4.2 million over the anticipated 35-year lifetime of the project.

The final value will be subject to the chosen turbine capacity rating. We currently assume that the total capacity of the turbines will be 24 MW.

We are committed to consulting and engaging with the people who live and work near our projects to ensure that community benefit funds support the projects and initiatives that are of most value to local people, such as:

- Local energy bill discount schemes
- Skills development and training
- Digital connectivity improvements
- Linkages with local schools and colleges on STEM subjects
- Upgrades to local amenities such as community halls and buildings
- Local facilities such as football pitches and sport centres
- Support and sponsorship of local groups and projects
- Accessibility improvements, recreational routes and signposting

Community Ownership

Ørsted also offers local communities surrounding our onshore wind projects the opportunity to own part of the project.

By owning a part of Scotland's green energy supply, local communities have the chance to benefit directly from the long-term economic benefits onshore wind energy brings.

If the community were eager to explore community ownership options, Ørsted would offer the opportunity to purchase a stake in the revised Larbrax Wind Farm.

Education and Skills

Skills and training are a vital part of Scotland's transition to a green economy that is powered by renewable energy, and we are determined to support skills development and local job opportunities as we develop Larbrax Wind Farm.

In 2014, the Larbrax Wind Farm Skills Fund was announced as part of the original Larbrax Wind Farm, which we wish to continue. Ørsted will look to work with with Dumfries and Galloway College to explore additional educational opportunities in the energy sector – helping to reinforce the College's existing offering in Stranraer and bridging local skills gaps.





8. Climate and Nature Emergency

The impacts of climate change are widely recognised as being one of the greatest global economic, environmental and social challenges facing the world today. A major cause of climate change is a rise in the concentration and volume of greenhouse gases in the atmosphere, a significant contributor to which, is the use of fossil fuels to generate electricity, provide heat and to fuel transport.



The Scottish Government has declared a climate emergency and a range of stretching targets, including:

- To achieve net zero emissions by 2045, five years ahead of the UK Government, and an interim 2030 target to reduce greenhouse gas emissions by 75% according to 1990 levels;
- To produce 50% of 'all energy' from renewables by 2030 - in 2021 only 24% of total energy needs were supplied by renewables¹;
- An ambition for a minimum of 20 Gigawatts (GW) of onshore wind capacity to be installed by 2030 - Scotland currently has an installed onshore capacity of 9.3 GW² so meeting the minimum target will require increasing Scotland's installed capacity by more than 100% in only seven years.

Locally, in June 2019, Dumfries and Galloway Council declared the climate emergency to respond urgently to climate change and transition to a carbon neutral region³. Dumfries and Galloway Council has published a 12-point plan outlining actions to achieve net-zero greenhouse gas emission by 2045 and protect the biodiversity in the region⁴.

Onshore wind is now one of the cheapest forms of electricity and will therefore continue to play an important role in realising the Scottish Government's climate change targets. The revised Larbrax Wind Farm will generate electricity from a renewable source of energy, offsetting the need for electricity generation from fossil fuels and helping Scotland move towards a decarbonised energy system. The electricity that will be produced will result in a saving in emissions of carbon dioxide (CO₂) with associated environmental benefit (see Board 4).

Onshore wind also has an important role to play in tackling the biodiversity crisis. The Scottish Government's Onshore Wind Policy Statement and recently-adopted National Planning Framework (NPF4) require developers of onshore wind projects to further contribute to biodiversity restoration and enhancement ambitions, including the target of halting biodiversity loss by 2030 and substantially restoring biodiversity by 2045⁵. **Board 6** sets out our commitment to enhancing nature within the revised Larbrax Wind Farm site.

¹ Greenhouse Gas Emissions Report: 2021-2022, 2023

² Scottish Government, 2023, Onshore Wind: 2023-2024, 2023

³ Dumfries and Galloway Council, 2019, Climate Change: 2019-2024, 2019

⁴ Dumfries and Galloway Council, 2023, Climate Change: 2023-2024, 2023

⁵ Scottish Government, 2023, Biodiversity: 2023-2024, 2023

⁶ Scottish Government, 2023, Biodiversity: 2023-2024, 2023

⁷ Scottish Government, 2023, Biodiversity: 2023-2024, 2023



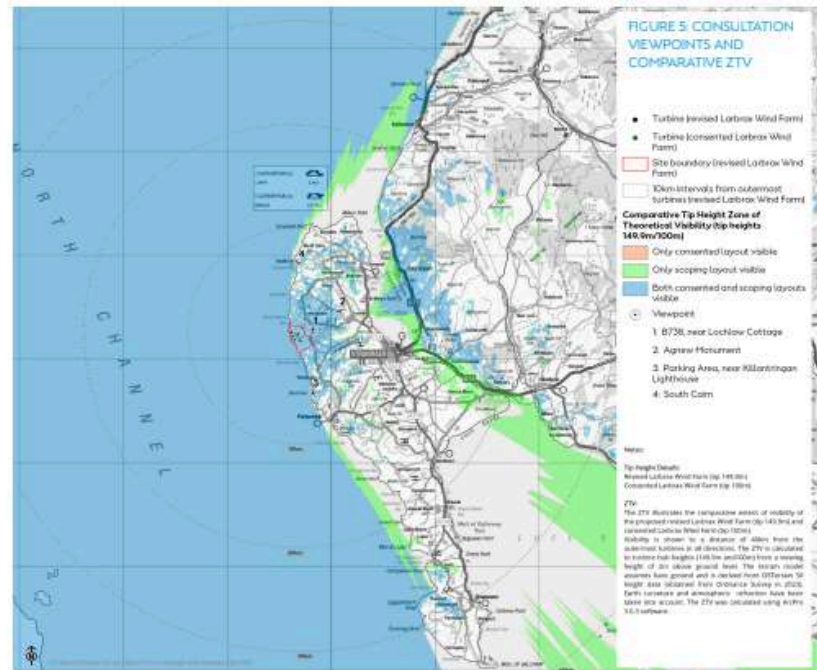
9. What the Project Could Look Like

Landscape Viewpoints

Experienced landscape consultants have been tasked with helping us create a carefully designed wind farm to be compatible with the surrounding landscape. An objective approach, which follows recognised guidance methods, will be used to minimise any potential effects on the surrounding landscape and visual resource, and on the people who experience these views. A key design objective will be to consider the landscape and visual issues associated with the consented Larbrax Wind Farm and, where possible, seek to improve or minimise any changes to these impacts through the revised design.

A comprehensive landscape and visual assessment is being prepared, which includes visualisations (photos with turbines superimposed) from viewpoints around the project. These visualisations will inform the ongoing design of the turbine layout. A selection of visualisations from representative viewpoints are on display as part of this exhibition. We have prepared visualisations from the viewpoints shown on **Figure 5** below.

Figure 5 also shows a comparative Zone of Theoretical Visibility (ZTV) map which illustrates the maximum extent to the difference in visibility between the consented Larbrax Wind Farm and the revised Larbrax Wind Farm (assuming no screening from trees, buildings etc).



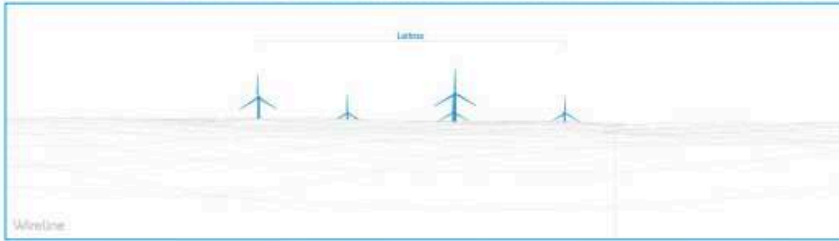


10. Viewpoint 1: B738, near Lochlaw Cottage

Location (OS Grid reference): 198228 E 562800 N
Direction of view: 250°
Horizontal field of view: 90° (cylindrical projection)



Photograph



Wireline



Proposed Turbine Photomontage (Height to Tip 149m)

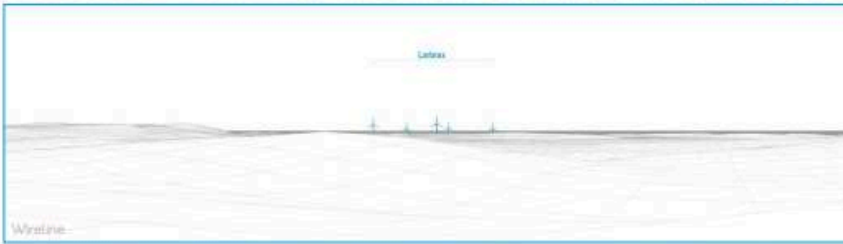


11. Viewpoint 2: Agnew Monument

Location (OS Grid reference): 200834 E 564617 N
Direction of view: 240°
Horizontal field of view: 90° (cylindrical projection)



Photograph



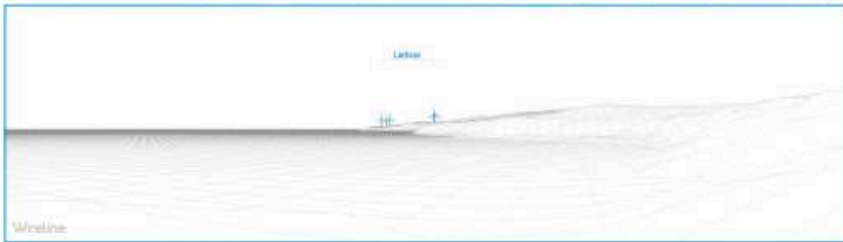
Wintime



Proposed Turbine Photomontage (Height to Tip 149.9m)

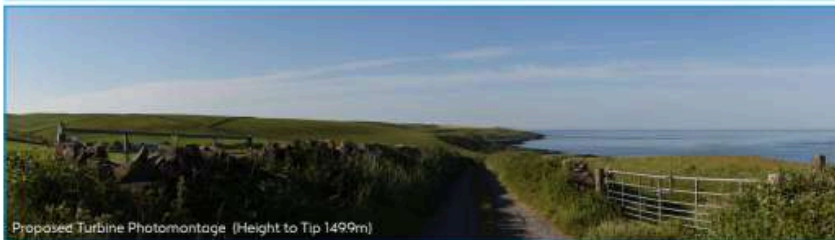
12. Viewpoint 3:
Parking Area, near Killantringan Lighthouse

Location (OS Grid reference): 198242 E 556737 N
Direction of view: 345°
Horizontal field of view: 90° (cylindrical projection)



13. Viewpoint 4: South Cairn

Location (OS Grid reference): 196889 E 569230 N
Direction of view: 185°
Horizontal field of view: 90° (cylindrical projection)





14a. Environmental Impact Assessment

Environmental Impact Assessment

As was done for the consented Larbrax Wind Farm in 2015, an Environmental Impact Assessment Report (EiAR) will be prepared and submitted with the planning application to Dumfries and Galloway Council. We have already prepared an EIA Scoping Report which sets out which effects will be assessed in the EiAR and our proposed approach to doing so for each environmental topic. The EIA Scoping Report can be viewed on the Dumfries and Galloway Council planning portal (reference 23/2032/SCO). The EIA Scoping Report was submitted to Dumfries and Galloway Council in September 2023 with a request for an EIA Scoping Opinion as to which effects should be assessed and how in the EIA. Details are provided below of the environmental topics which are proposed to be assessed in the EiAR.



Revised Larbrax Wind Farm www.larbraxwindfarm.co.uk

Landscape and Visual Amenity

The landscape and visual amenity assessment (LVIA) will assess effects on local landscape and visual amenity (views), including from selected viewpoints, settlements and routes, including cumulatively with other existing or proposed wind farms. The LVIA will also include a Residential Visual Amenity Assessment (RVAA).

Geology, Hydrology, Hydrogeology and Peat

The EIA will assess effects on geology, hydrology, hydrogeology (groundwater) peat, private water supplies (PWS) and groundwater dependent terrestrial ecosystems (GWDTEs). Where the revised Larbrax Wind Farm design will require the removal of peat, then a peat management plan (PMP) will be prepared to identify the quantity to be excavated during construction and how this will be responsibly managed.

Ecology


An ecological impact assessment (EciA) will consider the potential impacts of the revised Larbrax Wind Farm on important ecological features (such as important habitats of conservation value, protected species including bats and designated nature sites) during construction and operation. The Outline Biodiversity Enhancement and Management Plan (OBEMP) will be prepared to support the EciA.

Ornithology

The EIA will include an assessment of effects of the revised Larbrax Wind Farm on bird populations during construction and operation, particularly legally protected species and other notable birds of high nature conservation value which may be breeding or residing nearby.



14b. Environmental Impact Assessment

| Noise | Cultural Heritage | Access, Traffic and Transport | Shadow Flicker | Climate Change |
|---|--|---|--|--|
| <p>The effects of noise associated with construction vehicles, plant and machinery and aerodynamic noise produced by the blades whilst they operate at the nearest residential receptors will be assessed. A cumulative assessment will consider the impact of operational noise from other nearby turbines in addition to the revised Larbrax Wind Farm.</p> | <p>The potential effects on known heritage assets within the site (including unknown buried archaeology should they be found), setting effects on assets within the wider area and cumulative effects on designated and non-designated historic assets of local, regional, national and international importance will be assessed.</p> | <p>Potential traffic related effects, such as delays, impacts on pedestrian journeys and accidents and safety during the construction period will be assessed. Cumulative effects on transport and traffic will be included in this assessment where Larbrax Wind Farm could overlap with other known projects using the same road network. Measures to minimise disturbance from increased HGV traffic, staff traffic and the movement of abnormal loads on local communities and the local road network during construction will be proposed.</p> | <p>Shadow flicker occurs when turbines cause a flickering effect inside a building where sunlight passes through a window or door. Even though shadow flicker should not be an issue due to the distance of the turbines from properties, the assessment will quantify the worst-case level of exposure the nearest residential receptors could experience once the revised Larbrax Wind Farm is operational, and how this would be managed.</p> | <p>A carbon balance assessment will measure the sources of carbon emissions associated with the project during construction as well as carbon savings generated by operating the project. The assessment will also consider resilience of the project to projected climate change effects and how it may affect the ability of receptors to adapt to climate change.</p> |
| <p>The EIA will be available for viewing on the Orsted website as well as the Dumfries and Galloway Council online planning portal. Once the planning application is submitted, Dumfries and Galloway Council will invite comments on the content of the EIA from statutory and non-statutory consultees, including internal council departments, SEPA, NatureScot, Historic Environment Scotland and local community councils before making a decision on the application. Members of the public will be able to make representations to Dumfries and Galloway Council on the proposals. Information on how to make representations will be advertised by Dumfries and Galloway Council in the local and national press.</p> | |  | | |

15a. Our Work to Date

Our Work to Date

We are currently undertaking extensive environmental surveys to optimise the turbine layout and to minimise impacts on the environment and people. We have completed the following surveys to date which will inform the assessments within the EIA.

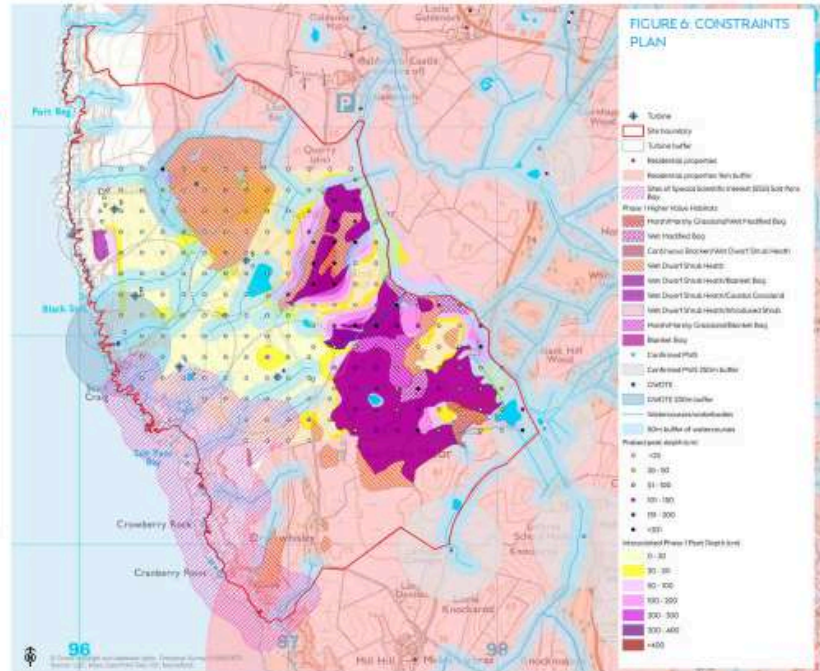
| Peat | Private Water Supply Questionnaires | Traffic and Transport | Noise |
|--|---|--|---|
| <p>Phase 1 peat probing was undertaken in July 2023 and this has supplemented peat depth data collected in 2015 for Larbrax Wind Farm. This has provided a comprehensive overview of the presence of peat within the site. Findings include:</p> <ul style="list-style-type: none"> • 67.5% of peat probes with peat depths of less than 50cm (meaning no peat); • 11.7% of peat probes recorded peat depths between 50cm and 100cm; and • 20.8% of the probed locations showed peat depths greater than 100cm with a maximum depth of 540cm. <p>We will be undertaking further detailed Phase 2 probing as the design progresses and this will be used to optimise the layout, inform the preparation of a PMP and Peat Landslide Hazard Risk Assessment (PLHRA) (if required). A Peatland Condition Assessment will also be undertaken, to inform discussions on potential peatland enhancement or restoration opportunities.</p> | <p>Avoiding impacts to local residents' private water supplies is of utmost importance to Ørsted. As such, our hydrology consultants have issued questionnaires to nearby properties in order to determine whether these properties have their own supply in the vicinity of the site so that we can avoid impacts through design as far as possible.</p> | <p>We have been undertaking traffic surveys and doing research to obtain information on existing traffic flows for roads which are likely to be used by construction traffic. This data will be used to assess the traffic and transport effects in the EIA. We have also been investigating the off-site works which may be required to facilitate the safe transportation of turbine components to the site.</p> | <p>We have undertaken noise monitoring at four residential properties surrounding the site between November 2021 and January 2022, using the most recent and robust survey method available. The noise survey measured background noise in a wide range of wind conditions and are considered to be representative of the baseline noise conditions of the local area. The baseline noise levels will be used to determine operational noise limits for each property included in the operational noise assessment. It is against these limits which the revised Larbrax Wind Farm will be assessed, and it is likely that these will be used to inform a planning noise condition which limits the levels of exposure for local residents. A key design objective will be to ensure that the operational noise limits for each property are not exceeded, including when Larbrax Wind Farm is operating alongside the other turbines nearby.</p> |

15b. Our Work to Date

Ecology and Ornithology

Updated habitat and protected species surveys were completed in summer 2023 to provide validation and to update surveys undertaken in 2013, 2017 and 2021. The latest surveys recorded the presence of badger and some habitats of higher conservation value such as blanket bog, wet modified bog and wet dwarf shrub heath, which is consistent with the results of the previous surveys.

Additional bird surveys were completed for one breeding season between March and August 2021. Flight activity surveys recorded 12 species of high conservation value such as barn owl, peregrine falcon, hen harrier, greylag goose and merlin. No breeding raptors were found within the site, however barn owl and peregrine falcon were known to be breeding outside the site. Breeding wader surveys found species such as curlew, lapwing, oystercatcher and snipe. No evidence of black grouse was found. Breeding locations and key foraging locations of target species will be taken into consideration in the design process to minimise the risk of disturbance, displacement and collision effects.





16. Next Steps and Feedback

Next Steps and Feedback

We place great importance on the impact the project may have on the environment and local community, and are therefore keen to have your feedback to help us develop the project in the best way possible.

We would be grateful if you could spare five minutes to complete our questionnaire. You can also send your comments or feedback to us as follows:

E: larbrax@orsted.com

P: Orsted, 2nd Floor, 2 Lochrin Square, 96 Fountainbridge, Edinburgh EH3 9QA

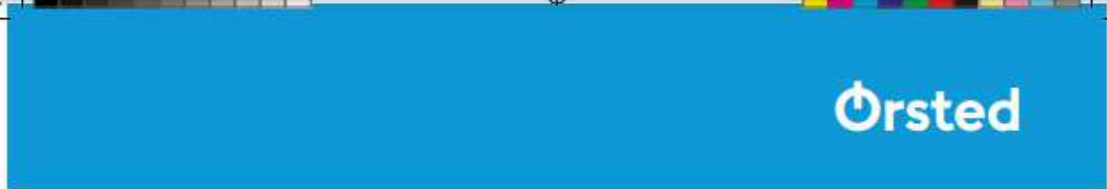
This Round 1 consultation will run until **28th November 2023**. You will still be able to view the information presented in this exhibition on our website (www.larbraxwindfarm.co.uk) after this date.

The timeline adjacent sets out the next steps proposed for the revised Larbrax Wind Farm project and indicative timescales.

Thank you for taking the time to visit this public exhibition and we look forward to hearing from you soon.



Appendix H - Feedback form from first round of consultation events



4. Do you support renewable energy?

Yes No Don't know

Please give details

5. If approved, Larbrax Wind Farm will bring a community benefit fund of around £120,000 for every year that the wind farm is in operation. Are there any local priorities and projects that you would like to see supported?

Please give details

6. Do you have any further comments in relation to the revised proposal for Larbrax Wind Farm?

Yes No

Please give details

7. Do you wish to be kept informed directly of project updates?

Yes No

If yes, please provide your contact details which we will store in full compliance with GDPR.

Name: Email:

Address:

Thank you for taking the time to fill in this feedback form. Please leave your completed form with a member of the project team, or send it back to us via email or post.

If you wish to contact us to discuss the project, please get in touch:

Email: larbrax@orsted.com

Phone: 0131 243 9100

Post: Orsted, 2nd Floor, 2 Lochrin Square, 96 Fountainbridge, Edinburgh EH3 9QA

www.larbraxwindfarm.co.uk



Appendix I - Spring / summer 2024 newsletter

Spring / Summer 2024

Community Newsletter



Kennowhead Wind Farm, South Lanarkshire

In November 2023, we consulted with the community on our proposals for the revised Larbrax Wind Farm, on the North Rhins Peninsula in Wigtownshire. As a result of the feedback we received, our design team has further refined these proposals. We have been working to create a wind farm design that reduces impact on peatland, forestry, transport, landscape and potential visual impact, from previous proposals consulted upon.

The project now consists of:

- Up to four wind turbines (we previously consulted on five)
- Each up to 149.9m in height
- Generating over 20MW of clean, green energy
- Remain committed to delivering £5,000 per MW of installed wind energy capacity, equating to £100,000 in annual community benefit for the local area.

In this newsletter, you can find out more about the history to the Larbrax Wind Farm project, details of our updated revised proposal, and information about our second round of public exhibitions.

Find out more

The revised Larbrax Wind Farm proposal continues to be refined. From the outset, we have engaged closely and inclusively with the communities close to the proposed site, so that we could listen and respond to your feedback. We will continue to do this and invite you to attend our second round of public consultation exhibitions to hear about the updated proposals for Larbrax Wind Farm, meet the team and ask any questions you may have:

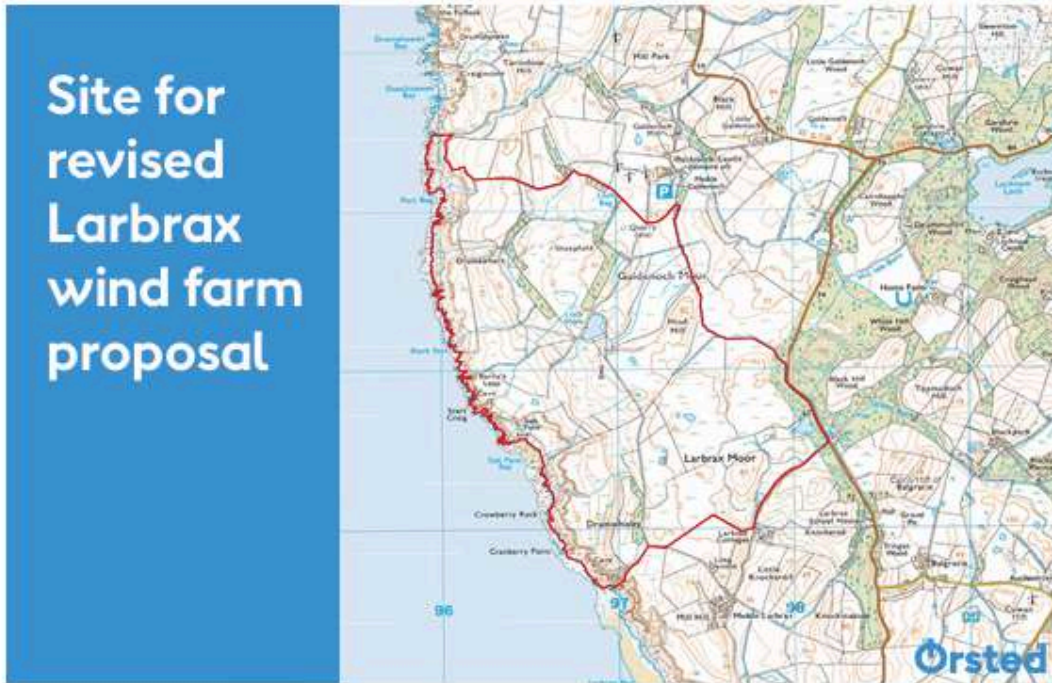
Tuesday 25 June

3pm-7pm - Stranraer Millennium Centre,
75 George Street Stranraer, DG9 7JP

Wednesday 26 June

9.30am-1pm - Leswalt Memorial Hall,
DG9 0LW

3pm-7pm - Portpatrick Village Hall,
The Harbour, DG9 8TZ



Background To The Project

Between 2013 – 2016, a proposal for Larbrax Wind Farm was consulted on and submitted to Dumfries and Galloway Council, which was ultimately consented at appeal by the Scottish Government in 2016.

From 2016 – 2023, work took place to make the project both technically and commercially viable, including discussions with turbine suppliers about the procurement of the consented turbines, and Scottish Power Transmission on the proposed grid connection. The culmination of this work is the revised proposal for Larbrax Wind Farm.

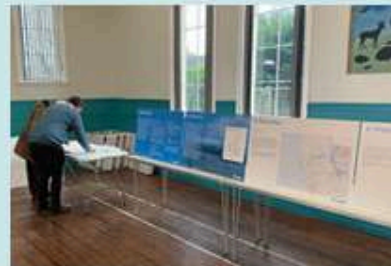
Ørsted is now progressing the revised proposal for Larbrax Wind Farm which addresses technical and commercial barriers and, if approved, would make a valuable contribution to Scotland's renewable energy and climate change goals, while returning community and economic benefits to the local area.

Updated environmental and ecological surveys have already been completed, which have been utilised to create the final wind farm design. They will also be used to complete the Environmental Impact Assessment, as part of the planning application.

Nearly 70% of people who attended our first round of exhibitions indicated that they supported the proposals.

Revised Larbrax Wind Farm - anticipated project timeline

- **Early Summer 2024** Second public consultation events held to display late-stage proposal.
- **Late Summer 2024** Anticipated date of planning submission to Dumfries and Galloway Council.
- **2025** Anticipated date of planning decision.
- **2027** Construction to commence, if approved.





Community

Ørsted is dedicated to being an active partner in the communities where we develop, build, operate and own green energy assets such as onshore wind farms. In Scotland, we offer a community benefit programme to support communities close to our wind farm sites. We're keen to back local community projects wherever we can.

Community benefit fund

Every year over the lifetime of Larbrax Wind Farm, Ørsted will pay £5,000 per megawatt of installed wind energy into a community benefit fund - equating to approximately £3.5 million over the lifetime of the wind farm once operational.

We want to consult the people who live and work near our projects to ensure that community benefit funds support those initiatives that are of most value to local people.

Community ownership

Ørsted also offers local communities surrounding our onshore wind projects the opportunity to own part of the project.

By owning a part of Scotland's green energy supply, local people have the chance to benefit directly over the long-term benefits onshore wind energy brings.

If the community were eager to explore community ownership options, Ørsted would offer the opportunity to purchase a stake in the Larbrax Wind Farm.

Education and skills

Skills and training are a vital part of Scotland's transition to a green economy that is powered by renewable energy. We will support skills development and local job opportunities as we develop Larbrax Wind Farm.

In 2014, the Larbrax Wind Farm Skills Fund was announced as part of the original Larbrax Wind Farm, which we wish to continue. Ørsted will work with Dumfries and Galloway College to explore additional educational opportunities in the energy sector – helping to reinforce the College's existing offering in Stranraer and bridging local skills gaps.



Ørsted Community Newsletter: Spring / Summer 2024

About Ørsted

As a global leader in offshore wind right here in the UK, we're continuing our green transformation journey by expanding our onshore wind portfolio. Ørsted partners with industry leaders to deliver cost-effective and environmentally sound onshore solutions that meet the growing demand for clean, renewable power, using the lowest cost renewable energy, in onshore wind. We currently have 4 GW of onshore wind assets in operation and under construction in the U.S. and Europe, providing green energy to thousands of homes while boosting local economies.

Onshore wind is an unlimited and renewable source of clean energy and will play a vital role in meeting ambitious net-zero targets set out by the UK and Scottish governments while helping to realise the global shift to green energy.



Kennockhead Wind Farm, South Lanarkshire


Contact us

Our project team has extensive experience in the design, construction and operation of wind energy projects and we are committed to delivering Larbrax Wind Farm in a way that benefits both the communities and natural environment surrounding the site.

We hope to see you at our upcoming public exhibition events.

Please contact us if you have any questions about the proposal, or suggestions for the community consultation.

E: larbrax@orsted.com
T: 0131 243 9100
P: Ørsted, 2nd Floor, 2 Lochrin Square,
96 Fountainbridge, Edinburgh EH3 9QA


Scan for
more info



Appendix J - Newspaper adverts for second of consultation events

Stranraer & Wigtownshire Free Press

news@stranraer-freepress.co.uk
June 13, 2024 5



Above: Davy Marshall donated coffee and tea to the centre

Davy's big sleepout helps Masonfield Centre

LAST Christmas, ex-serviceman Davy Marshall from Kirkcowan, slept on the street in Dumfries for a week to both raise funds for military charities and highlight the plight of homeless veterans.

Last week, Davy used some of the £2500 funds raised then to present tea and coffee to the Masonfield Centre in Newton Stewart on behalf of the Newton Stewart Branch of the Royal British Legion Scotland.

Davy told the Free Press: "The centre helps people suffering from drug and alcohol addiction. Being government funded they can't accept donations but they told me they really could use tea and coffee."

"I've already made donations to We Are With You, a charity in Dumfries which also helps with addiction and homelessness and also SSFA, the Soldiers Sailors and Air force Association, which helps veterans in need. I'm getting married to my fiancé Lynne on July 6, and I plan to be back on the streets raising money to help local charities after my wedding and again at Christmas."



REVISED LARBRAX WIND FARM PROPOSAL

Public Exhibitions

Orsted is developing a revised proposal for Larbrax Wind Farm, located on the North Rhins Peninsula in Wigtownshire.

The revised proposals address technical and commercial barriers to delivering a previous consented proposal for Larbrax Wind Farm which was consulted upon between 2013-2017, and consist of:

- ➔ Up to four wind turbines
- ➔ Each up to 149.9m in height
- ➔ Generating 20MW of clean, green energy
- ➔ Delivering £5,000 per MW of installed wind energy capacity, equating to £100,000 in annual community benefit for the local area.

Following initial consultation in November 2023, we invite you to attend the following public consultation exhibitions to see how comments received have informed our revised proposals for Larbrax Wind Farm, meet the team and ask questions:

Tuesday 25 June
3pm-7pm
Stranraer Millennium Centre,
75 George Street, Stranraer, DG9 7JP

Wednesday 26 June
9.30am-1pm
Leswalt Memorial Hall,
Bridge of Aldouran, Leswalt, DG9 0LW

3pm-7pm
Portpatrick Village Hall,
The Harbour, DG9 8TZ

Get in touch
To make a comment please email larbrax@orsted.com or telephone 0131 243 9100
For further information visit www.larbraxwindfarm.co.uk

Please note that comments made to Orsted are not representations to the planning authority. Representations to the planning authority can be made once the planning application has been submitted to Dumfries & Galloway Council.



The Electoral Commission

Register to vote now.
It's quick and easy,
just go to
gov.uk/register-to-vote

Scan to register



Galloway Gazette

Friday, June 14, 2024

www.dng24.co.uk

DNG MEDIA 23

Market Place

BLINDS

CB BLINDS LOCKERBIE
07941 255326

FREE NO OBLIGATION APPOINTMENTS
FAST LOCAL SERVICE
ALL AREAS COVERED
BLINDS FOR ALL BUDGETS
CONSERVATORY SPECIALISTS
ALL WORK FULLY GUARANTEED
ALL TYPES OF BLINDS MADE AND FITTED TO MEET YOUR REQUIREMENTS
WE ARE ACTIVE MEMBERS OF THE MAKE IT SAFE CAMPAIGN
EMAIL: CBBLINDS@STOKENWORLD.COM
WWW.CBBLINDSUK.CO.UK

Classified advertising call:
01461 202078

DATS BLINDS
3 Blinds For £150.00
(70 x 50)

Your local Manufacturer of top quality Blinds
FAST efficient Service

Special offers on : Perfect fit blinds ideal
Conservatory blinds : for tilt & turn windows

Vertical, Venetian, Roller, Roman, Blackout,
Wooden Venetians, Pleated, Velux, Fly Screens

For a free, no obligation survey and
to view our extensive range call

01461 20 48 42 or
01461 20 61 48

Or text your name and contact number to
077 382 192 88
www.datsblinds.co.uk

CASHMAKERS

BEDS

SINGLE MATTRESS
good condition £30 Tel: 01387 720844

HOUSEHOLD

LAURA ASHLEY 2
DRAWER HALF MOON
CHEST - classic style
£100 Ivory colour of
£100 pair Tel: 01387
463108

MISC

BLACK SHOPPING
TROLLEY (tall) used
once, on wheels, £20
Tel: 01387 253524

HOUSEHOLD

FREE used armchair on
wheels, no fire
certificate, photos
available, local delivery
possible. Tel:
0761342621

SPORT

ASSORTED GOLF
CLUBS AND BAGS £10
Tel: 01387 720844

BIKES

KINDS BMX £10 TEL:
01387 720844 TEL: 01387
720844



Is it
someone
special's
birthday?

Why not let
your friends
and
family know
about it by
placing a

Personal
Announcement
in this
newspaper

Contact our
sales team
on
01461
202078

email:
ads@dngonline.
co.uk



Public Notices

Orsted

REVISED LARBRAX WIND FARM PROPOSAL

Public Exhibitions

Orsted is developing a revised proposal for Larbrax Wind Farm, located on the North Rhins Peninsula in Wigtownshire.

The revised proposals address technical and commercial barriers to delivering a previous consented proposal for Larbrax Wind Farm which was consulted upon between 2013-2017, and consist of:

- Up to four wind turbines
- Each up to 149m in height
- Generating 20MW of clean, green energy
- Delivering £5,000 per MW of installed wind energy capacity, equating to £100,000 in annual community benefit for the local area

Following initial consultation in November 2023, we invite you to attend the following public consultation exhibitions to see how comments received have informed our revised proposals for Larbrax Wind Farm, meet the team and ask questions:

Tuesday 25 June

3pm-7pm
Stranraer Millennium Centre,
75 George Street,
Stranraer, DG9 7JF

Wednesday 26 June

9.30am-1pm
Lairwolf Memorial Hall,
Bridge of Aldouran,
Lairwolf, DG9 0JW
3pm-7pm
Portpatrick Village Hall,
The Harbour, DG9 5TZ

Get in touch

To make a comment please email: larbrax@orsted.com or telephone: 0131 243 9100
For further information visit: www.larbraxwindfarm.co.uk

Please note that comments made in relation to our proposals are for information only. Representations to the planning authorities can be made under the planning regulations for Applications & Consultation in Galloway Council.

E Power

SHENNANTON WIND FARM PUBLIC EXHIBITION
E Power Limited is holding a public information session regarding the proposed Shennanton Wind Farm and associated infrastructure (including battery storage) located approximately 3.1km northwest of Kirkcowan, Newton Stewart (Grid Reference 231760E 564795N).

Exhibitions will be held at:

| | |
|---|---|
| Kirkcowan Village Hall Kirkcowan, Newton Stewart DG8 0HF Tuesday 25 June 11.00-2.00pm | McMillan Hall Dashwood Square, Newton Stewart DG8 8EQ Tuesday 25 June 4.00-7.00pm |
|---|---|

This is in accordance with Electricity Act 1989 - sections 36 and 37: applications guidance.

Information about the proposal will be on display and project representatives in attendance to answer any questions. All information available at the event will also be available online at www.shennantoninfo.co.uk

In addition, information already submitted to the Energy Consents Unit can be found on the planning portal using the reference: ECU00005101. Interested parties can also contact the Project Manager at epower@turnkeydev.com.

Preapplication comments and queries can be shared with the project team by way of feedback form on the day of the event or posted to: E Power Ltd, 15 Pitreavie Court, Pitreavie Business Park, Dunfermline, KY11 8UU; or by phone to: 07542754642 (Smithy House Associates). A questionnaire is also available on the website noted above.

Statements made to the project team are not formal planning representations. If a planning application is submitted to the Scottish Government Energy Consents Unit, then there will be an opportunity to make a direct representation to the ECU.

PLANNING

The applications, associated plans and documents can be viewed on-line by following the ePlanning link on the Council's website at www.dumgal.gov.uk/planning. Written comments may be made to Head of Economy and Development by email to Planning@dumgal.gov.uk or via the Council's website, as noted above, by 28/06/2024 (Type A) or 05/07/2024 (Type B).

Types and Country Planning (Scotland) Act 1997 as amended

24/1134/EC (B) Address Proposal
24/1134/EC (B) 73 Victoria Street, Newton Stewart
Late Listed Building Consent for installation of 1 no. Replacement window and 1 no. Door on west elevation

24/1089/UL (A) 73 Victoria Street, Newton Stewart
Installation of 1 no. Replacement window and 1 no. Door on west elevation (Retrospective)

www.dumgal.gov.uk Dumfries & Galloway

TO ADVERTISE

Contact our Sales Team

Call:
01461 202078

E-mail:
sales@dngonline.co.uk

Appendix K - Round 2 event poster



REVISED LARBRAK WIND FARM PROPOSAL

Public Exhibitions

Ørsted is developing a revised proposal for Larbrax Wind Farm, located on the North Rhins Peninsula in Wigtownshire.

The revised proposals address technical and commercial barriers to delivering a previous consented proposal for Larbrax Wind Farm which was consulted upon between 2013-2017, and consist of:

- Up to four wind turbines
- Each up to 149.9m in height
- Generating 20MW of clean, green energy
- Delivering £5,000 per MW of installed wind energy capacity, equating to £100,000 in annual community benefit for the local area.

Following initial consultation in November 2023, we invite you to attend the following public consultation exhibitions to see how comments received have informed our revised proposals for Larbrax Wind Farm, meet the team and ask questions:

Tuesday 25 June **3pm-7pm**

Stranraer Millennium Centre,
75 George Street, Stranraer, DG9 7JP

Wednesday 26 June **9.30am-1pm**

Leswalt Memorial Hall,
Bridge of Aldouran, Leswalt, DG9 0LW

3pm-7pm

Portpatrick Village Hall,
The Harbour, DG9 8TZ

Get in touch

To make a comment please email larbrax@orsted.com or telephone 0131 243 9100.

For further information visit www.larbraxwindfarm.co.uk.

Please note that comments made to Ørsted are not representations to the planning authority. Representations to the planning authority can be made once the planning application has been submitted to Dumfries & Galloway Council.

Appendix L - Email highlighting second round of exhibitions

BY EMAIL ONLY

19 June 2024

Notification of Public Exhibitions – Revised Larbrax Wind Farm Proposal

Further to our email to you last year regarding our proposals for the revised Larbrax Wind Farm, I write to advise that we will shortly hold our second round of public exhibitions to share our latest proposals with the community. This will highlight how the comments from our first round of events in November 2023 have shaped the plans which we intend, subject to further feedback, submitting to Dumfries and Galloway Council this summer.

The public exhibitions will take place as follows:

Tuesday 25 June

- 3pm -7pm - Stranraer Millennium Centre, 75 George Street, Stranraer, DG9 7JP

Wednesday 26 June

- 9.30am -1pm - Leswalt Memorial Hall, Leswalt, DG9 0LW
- 3pm - 7pm - Portpatrick Village Hall, The Harbour, DG9 8TZ

If you or a colleague are able to attend, I hope we might see you at the events to discuss our proposal and any questions that you may have.

To ensure that the community is well-informed of our plans and the exhibition events, we have written to residents inviting them to attend the exhibitions via the attached newsletter. We have also advertised the exhibitions in the Stranraer and Wigtownshire Free Press and in the Galloway Gazette.

I attach a graphic containing details of the events which can be shared on social media, or printed out and displayed locally, should you be able to do so.

To remind you of the background, between 2013-2016, a proposal for Larbrax Wind Farm was consulted on and submitted to Dumfries and Galloway Council, which was ultimately consented at appeal by the Scottish Government in 2016.

From 2016-2023, work has been underway to make the project both technically and commercially viable, including discussions with turbine suppliers about the procurement of the consented turbines, and Scottish Power Transmission on the proposed grid connection. The culmination of this work is the revised proposal for Larbrax Wind Farm.

Ørsted is now progressing the revised proposal for Larbrax Wind Farm which addresses technical and commercial barriers and, if approved, would make a valuable contribution to Scotland's renewable energy and climate change goals, while returning community and economic benefits to the local area.

The revised proposal now consists of:

- Up to four wind turbines
- Each up to 149.9m in height
- Generating 20MW of clean, green energy
- Delivering £5,000 per MW of installed wind energy capacity, equating to £100,000 in annual community benefit for the local area

We are committed to engaging closely and inclusively with the communities close to the proposed site to listen to feedback on the proposal and the associated community benefit opportunities. We hope you will be able to attend the upcoming exhibitions, but should you have any questions or wish to discuss the proposals in the meantime, please do not hesitate to contact me on the email addresses undernoted.

Yours sincerely

Tom Parkyn
Portfolio Development Manager
Ørsted Onshore UK Limited

Email: tompa@orsted.com, larbax@orsted.com

Appendix M - Exhibition boards for second round of consultation events

1. Introduction

Welcome and thank you for visiting this second round public exhibition for the revised Larbrax Wind Farm.

Through this exhibition you can learn about Ørsted, find out what the revised Larbrax Wind Farm proposals are, the progress we have made with the project since the first round of public consultation in November 2023, the associated community benefit opportunities, and provide your valued feedback.

About the Project

The revised Larbrax Wind Farm is a revision of the consented Larbrax Wind Farm, an onshore wind farm approximately 9 km west of Stranraer, on the Rhins peninsula.

Between 2013-2015, a proposal for Larbrax Wind Farm was consulted on and a planning application was submitted to Dumfries and Galloway Council. The planning permission was granted on appeal by the Scottish Government in 2016. From 2016-2024, a number of efforts have been made to make the project both technically and commercially viable, including discussions with turbine suppliers and Scottish Power Transmission (SPT) with regards to the procurement of the consented 100 m tip turbines and the proposed grid connection. The culmination of this work behind the scenes is the revised proposal for Larbrax Wind Farm, which will significantly improve the efficiency and buildability of the project.

Following the first round of consultation events held on 6th and 7th November 2023 and a detailed design process, Ørsted is now progressing the revised proposal for Larbrax Wind Farm to application. The revised proposals address technical and commercial barriers and, if approved, will make a valuable contribution to Scotland's renewable energy and climate change goals, while returning community and economic benefits to the local area.

Please note that an application has not yet been submitted, therefore, comments made in response to this consultation are not representations to Dumfries and Galloway Council but to Ørsted as the applicant. Members of the public will have the opportunity to submit comments to the council when the application has been submitted (see Board 14b).

The final revised proposal for which planning permission is being sought comprises:

- Up to four wind turbines,
- Each up to 149.9m in height,
- Generating over 20MW of clean, green energy,
- Delivering £5,000 per MW of installed wind energy capacity, equating to ~£100,000 in annual community benefit for the local area,
- Up to 10 MW of battery storage.

Working with You

This is the final round of public consultation which we will undertake before submitting the planning application for the revised Larbrax Wind Farm. Your feedback is vital to our approach to the project, and we would encourage you to fill in the provided questionnaire when you have viewed the exhibition materials. Members of our team are also on-hand to answer any questions you may have.

The information presented in this exhibition can also be found online at: www.larbraxwindfarm.co.uk.

You can contact our team at any time:

E: larbrax@orsted.com
T: 0131 243 9100
P: Ørsted, 2nd Floor, 2 Lochrin Square, 96 Fountainbridge, Edinburgh EH3 9QA

2. About Us

Ørsted is one of the world's most sustainable energy companies and is helping Scotland and the UK deliver on their net-zero ambitions while achieving all the economic, social and environmental benefits that come with that. Headquartered in Denmark, Ørsted is active across Europe, the USA and Asia. Since 2018, Ørsted has expanded significantly and now has a portfolio of 8.2 Gigawatts (GW) of operating and under construction capacity across wind, solar, and energy storage. Our target is to have 17.5 GW of installed onshore wind, solar, and storage capacity across our markets by 2030. In June 2021, Ørsted acquired Brookfield Renewable UK and Ireland, which subsequently was re-branded to Ørsted Onshore UK Ltd.

Already the global leader of offshore wind, we are expanding our onshore wind portfolio in the UK and Ireland.

Ørsted already has an established track record in Scotland through our existing and consented onshore wind farms.

- Kennowhead Wind Farm Cluster in South Lanarkshire - Phase 1, consisting of 13 turbines (up to 180 m in height) with a generating capacity of up to 62 megawatts (MW) is currently operational. Phase 2, consisting of 22 turbines (up to 220 m in height) and a generating capacity of up to 112 MW, is consented.

We are developing new energy systems for the future, building skills and creating jobs, all whilst ensuring positive impacts on nature. You can read more about our proposed community benefits on [Board 7](#).

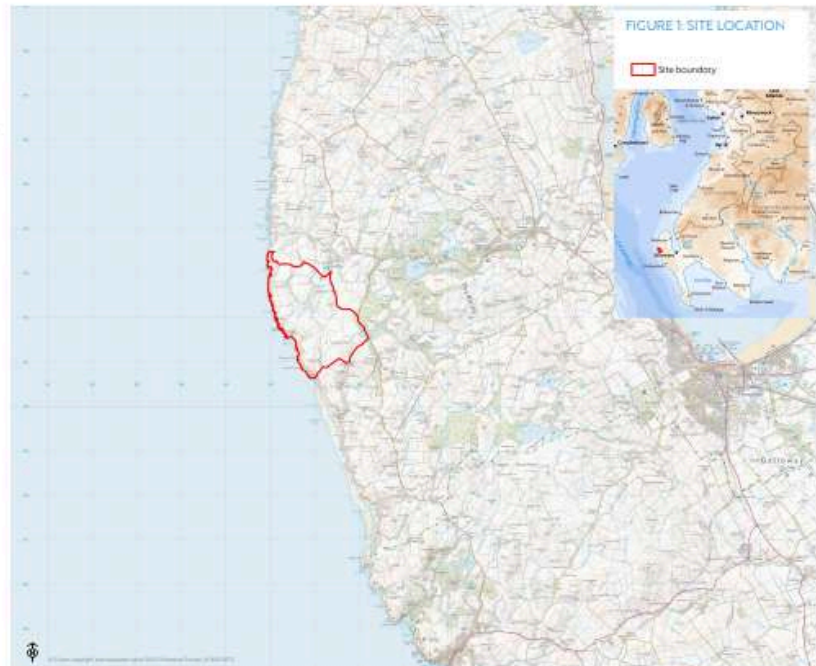


3. Site Context

Site Context

The revised Larbrax Wind Farm is located approximately 9 km west of Stranraer in Dumfries and Galloway, and is a re-design of the consented Larbrax Wind Farm for which planning permission was granted on appeal in 2016. The proposed site lies in a remote area in the western edge of the Rhins Peninsula. The site is relatively low-lying, sloping from east to west towards the coast. The highest point of the site is Hind Hill on Caldenoch Moor at around 82m, as well as an unnamed hill of 83m on Larbrax Moor.

Land within the site is mainly used for grazing livestock with some small woodland plantations being used as shelterbelts. Properties within the surrounding area are mainly single rural dwellings, farmhouses and holiday cottages.



4. Proposals

Proposals

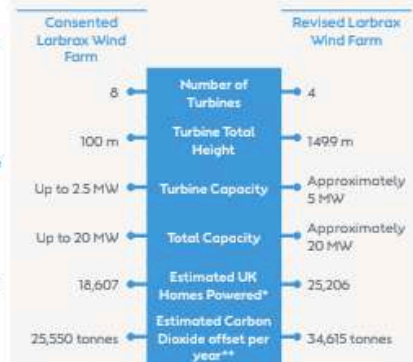
The previous planning permission for Larbrax Wind Farm allowed for eight turbines each of up to 100 m in height. However, advancements in turbine technology and changes to the energy market, meant that the consented wind farm was no longer viable. As the site is very windy it is the perfect spot to install a wind farm, so we are now seeking to revise the Larbrax Wind Farm proposal in order to optimise the potential energy output from the site, and retain a commercially viable scheme whilst using fewer but much more efficient and taller turbines.

We will be applying to Dumfries and Galloway Council for planning permission to construct and operate the revised Larbrax Wind Farm.

The current proposals comprise:

- Up to four wind turbines, each with a maximum height of up to 1499 m;
- Foundations supporting each wind turbine;
- Associated crane hardstandings at each turbine location;
- Approximately 3 km of onsite access tracks (2 km of new tracks and 1 km of upgraded tracks) to facilitate access to the turbines and other infrastructure;
- Up to eight watercourse crossings and associated infrastructure;
- A new access junction on the B736;
- A network of underground cables to connect the turbines to the onsite substation;
- A control building and electrical substation;
- A Battery Energy Storage System (BESS);
- A temporary construction compound;
- A temporary on-site borrow pit (quarry) for winning stone during construction;
- Removal of 0.35 ha of small trees and scrub largely consisting of rhododendron bushes around the site entrance.

Comparison of Homes Powered and CO₂ Offset Per Year



*Based on the latest Department for Energy Security and Net Zero (DESNZ) and Digest of UK Energy Statistics (DURES) figures, which provide an average UK annual household electrical consumption of 3,239 kWh. Site specific wind data and modelling found that the consented proposal had a capacity factor of 34.4% and the revised proposal, with larger and more powerful turbines, has a capacity factor of 46.6%.

**Uses DESNZ "all fossil fuels" emissions statistic of 424 tonnes of carbon dioxide per GWh of electricity supplied in the Digest of UK Energy Statistics (July 2023) Table S14.



5a. Consented Larbrax Wind Farm vs Revised Larbrax Wind Farm



5b. Consented Larbrax Wind Farm vs Revised Larbrax Wind Farm

| Consented Larbrax Wind Farm | Component Details | Revised Larbrax Wind Farm |
|--|---------------------------|---|
| Eight of up to 100 m to blade tip 2.5 MW capacity | Turbines | Four of up to 149.9 m to blade tip 5 MW capacity |
| 346 m ² per turbine based on 21 m diameter | Turbine foundation | 491 m ² per turbine based on 25 m diameter |
| 680 m ² per turbine (22 m x 40 m) | Turbine hardstanding | 2819 m ² per turbine (40 m x 70 m) |
| None | Battery storage | 10 MW |
| None | Visible aviation lighting | None |
| 5.31 km | Access tracks (new) | 2km |
| None | Access tracks (upgraded) | 1 km |
| 5.5 m | Access track width | 6 m |
| One CC1: 10,125 m ² (75 m x 135 m) | Construction compounds | One CC1: 1,500 m ² (30 m x 50 m) |
| One 1,375 m ² (25 m x 55 m) | Substation | One 1,500 m ² (30 m x 50 m) |
| Two BP1: 10,34 m ² (47 m x 22 m) BP2: 19,950 m ² (190 m x 105 m) | Borrow pits | One BP1: 6,400 m ² (80 m x 80 m) |
| Seven | Watercourse crossings | Eight |
| 1 (60 m high) | Met mast | None |
| 1 m x 1 m | Cable trenches | 1.5 m x 1.5 m |
| 4.04 ha | Land take (permanent) | 2.6 ha |
| 558.4 ha | Site area | 345 ha |



6. Access, Programme and Preservation and Enhancement of Nature

Access

The site will be accessed from a new junction with the B738, located on the eastern part of the site. Traffic will then drive west into the site. General construction vehicles will come from the north and east via the A77, A751, A75 and the B738. Vehicles transporting turbine components are expected to travel south from King George V Docks in Glasgow via the M8, M74, A74(M) and M6 (existing at Junction 42) then back north on M6 (existing at A74(M) junction 22 at Gretna Green). Vehicles will then travel west via the A75 to Stranroer (using Commerce Road to avoid going into the town), south and west along the A77 to Portpatrick then north on the B738 to the site entrance. Construction materials will be sourced from local quarries where this cannot be fully sourced from the borrow pit within the site.



A Construction Traffic Management Plan (CTMP), Staff Travel Plan and Abnormal Loads Traffic Management Plan will be agreed and implemented in consultation with the local roads authority to manage traffic movements and minimise effects on local communities during construction.

Revised Larbrax Wind Farm www.larbraxwindfarm.co.uk

Construction

It is estimated that it will take approximately 12 months to construct the revised Larbrax Wind Farm. Construction works will include the following main activities, most of which will be undertaken concurrently to reduce disruption to those living in the local area:

- Enabling works such as vegetation clearance, working of borrow pit (small quarry) and establishing the site construction compound;
- Construction/upgrading of site access tracks, site access junction on B738, passing places and any watercourse crossings;
- Construction of culverts under tracks to facilitate drainage and maintain existing hydrology;
- Construction of turbine foundations;
- Construction of onsite control building, substation and battery energy storage system;
- Excavation of trenches and cable laying adjacent to site tracks;
- Delivery and erection of wind turbines and energy storage batteries;
- Construction of a network of underground cables to connect turbines and battery energy storage system to the onsite substation;
- Commissioning of wind farm (assuming grid connection is in place);
- Restoration of temporary construction areas; and
- Implementation of habitat management and enhancement proposals.

Operation

Planning permission will be sought for an operational period of 35 years. During the operational phase it is expected that there will be very little traffic generated by the project, and this will be limited to general maintenance visits. Towards the end of the operational period, a decision will be made as to whether to refurbish, remove, or replace the turbines. If refurbished or replaced, this would be subject to a new planning application.

Nature Preservation and Enhancement

We are investigating opportunities for habitat restoration and enhancements to help compensate for habitat loss as a result of the revised Larbrax Wind Farm. These measures may use areas of the site which are not being developed. The aim will be to achieve a biodiversity net gain within the site (i.e. leave the current nature resource on the site in a better state than it was before the revised Larbrax Wind Farm). Working with our ecology and peatland specialists, we will prepare an Outline Biodiversity Enhancement and Management Plan (OBEMP) for the site and this will accompany the planning application. Measures proposed will be agreed with Dumfries and Galloway Council and NatureScot as statutory consultees before they are implemented should the application be approved.





7. Community Benefits

Ørsted is dedicated to being an active partner in the communities where we develop, build, operate and own green energy assets such as onshore wind farms. In Scotland, we offer a community benefit programme committed to supporting communities close to our wind farm sites. We're keen to support local community projects wherever we can.

Community Benefit

Throughout the operational lifetime of Larbrax Wind Farm, Ørsted will pay £5,000 per installed MW into a community development fund - equating to approximately £100,000 per year or £3.5 million over the anticipated 35-year lifetime of the project.

The final value of the payments will be subject to the chosen turbine capacity rating. Based on four turbines and a candidate turbine with a capacity of 5 MW, this gives an output capacity of 20 MW. Should the chosen turbine have a larger output capacity (within the permitted tip heights allowed), then community benefit payments will be greater.

We are committed to consulting and engaging with the people who live and work near our projects to ensure that community benefit funds support the projects and initiatives that are of most value to local people, such as:

- Local energy bill discount schemes;
- Skills development and training;
- Digital connectivity improvements;
- Partnerships with local schools and colleges on STEM subjects;
- Upgrades to local amenities such as community halls and buildings;
- Local facilities such as football pitches and sport centres;
- Support and sponsorship of local groups and projects; and
- Accessibility improvements, recreational routes and signposting.

Community Ownership

Ørsted also offers local communities surrounding our onshore wind projects the opportunity to own part of the project.

By owning a part of Scotland's green energy supply, local communities have the chance to benefit directly from the long-term economic benefits onshore wind energy brings.

If the community were eager to explore community ownership options, Ørsted would offer the opportunity to purchase a stake in the revised Larbrax Wind Farm.

Education and Skills

Skills and training are a vital part of Scotland's transition to a green economy that is powered by renewable energy, and we are determined to support skills development and local job opportunities as we develop the revised Larbrax Wind Farm.

In 2014, the Larbrax Wind Farm Skills Fund was announced as part of the original Larbrax Wind Farm, which we wish to continue. Ørsted will be working with Dumfries and Galloway College to explore additional educational opportunities in the energy sector – helping to reinforce the College's existing offering in Stranraer and bridging local skills gaps.

We are continuing to focus and work with the college to ensure that our funding commitment is spent in the best possible way to fit the needs of the local area.





8. Climate and Nature Emergency

The impacts of climate change are widely recognised as being one of the greatest global economic, environmental and social challenges facing the world today. A major cause of climate change is a rise in the concentration and volume of greenhouse gases in the atmosphere, a significant contributor to which, is the use of fossil fuels to generate electricity, provide heat and to fuel transport.



The Scottish Government has declared a climate emergency and a range of stretching targets, including:

- To achieve net zero emissions by 2045, five years ahead of the UK Government;
- To produce 50% of 'all energy' from renewables by 2030 - in 2021 only 24% of total energy needs were supplied by renewables¹;
- An ambition for a minimum of 20 Gigawatts (GW) of onshore wind capacity to be installed by 2030 - Scotland currently has an installed onshore capacity of 96 GW² so meeting the minimum target will require a doubling of Scotland's current installed capacity in under six years.

Locally, in June 2019, Dumfries and Galloway Council declared the climate emergency to respond urgently to climate change and transition to a carbon neutral region. Dumfries and Galloway Council has published a 12-point plan outlining actions to achieve net-zero greenhouse gas emission by 2045 and protect the biodiversity in the region³.

Onshore wind is now one of the cheapest forms of electricity and will therefore continue to play an important role in realising the Scottish Government's climate change targets. The revised Larbrax Wind Farm will generate electricity from a renewable source of energy, offsetting the need for electricity generation from fossil fuels and helping Scotland move towards a decarbonised energy system. The electricity that will be produced will result in a saving in emissions of carbon dioxide (CO₂) with associated environmental benefit (see Board 4).

Onshore wind also has an important role to play in tackling the biodiversity crisis. The Scottish Government's Onshore Wind Policy Statement and recently-adopted National Planning Framework (NPF4) require developers of onshore wind to further contribute to biodiversity restoration and enhancement ambitions, including the target of halting biodiversity loss by 2030 and substantially restoring biodiversity by 2045⁴. Board 6 sets out our commitment to conserving and enhancing nature within the revised Larbrax Wind Farm site.

¹ Climate Change (House of Commons) Tenth Report, 2022, para 134

² Scottish Government, 2022 Scotland's Energy Strategy: 2018-2030, page 10. Available at: <https://www.gov.scot/publications/scotland-energy-strategy-2018-2030/pages/10.aspx>

³ Dumfries and Galloway Council, 2019, Dumfries & Galloway Council's 12-Point Plan: A Roadmap to Net Zero, available at: <https://www.dumfries-galloway.gov.uk/council-and-democracy/council-and-democracy/council-and-democracy/12-point-plan>

⁴ Scottish Government, 2023, Scotland's Energy Strategy: 2018-2030, page 10. Available at: <https://www.gov.scot/publications/scotland-energy-strategy-2018-2030/pages/10.aspx>



9. What the Project Could Look Like

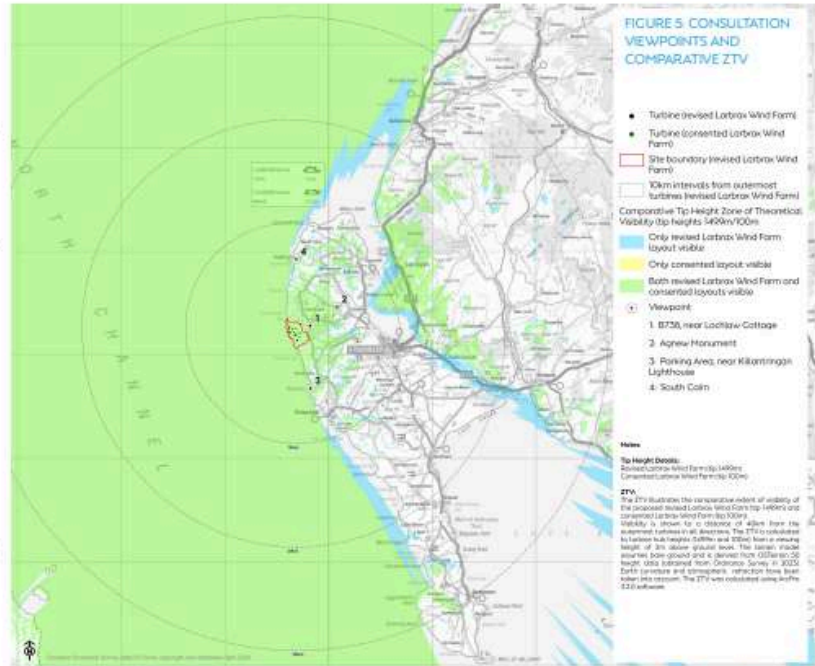
Landscape Viewpoints

Experienced landscape consultants have been tasked with helping us create a carefully designed wind farm to be compatible with the surrounding landscape. An objective approach, which follows recognised guidance methods, has been used to minimise any potential effects on the surrounding landscape and visual resource, and on the people who experience these views.

From the feedback we received during the first round of exhibitions, we have given further consideration to the landscape and visual issues associated with the consented Larbrax Wind Farm and, where possible, sought to minimise any material changes to these impacts through the revised design. A key objective was to ensure that the layout minimised land take and impacts on ecology and current farming practices. This has resulted in the removal of one turbine from the previous consultation layout.

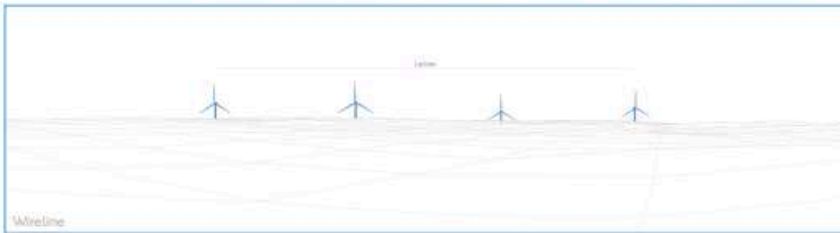
A comprehensive landscape and visual assessment is being prepared, which will include visualisations from selected viewpoints around the project. These visualisations have been key to checking and optimising the turbine layout. A selection of visualisations from representative viewpoints are on display as part of this exhibition. We have prepared visualisations from the viewpoints shown on Figure 5.

Figure 5 also shows a comparative Zone of Theoretical Visibility (ZTV) map which illustrates the maximum extent to the difference in visibility between the consented Larbrax Wind Farm and the final revised Larbrax Wind Farm layout (assuming no screening from trees, buildings etc)



10. Viewpoint 1:
B738, near Lochlaw Cottage

Location (OS Grid reference) 198228 E 562801 N
Direction of view: 245°
Horizontal field of view: 90° (cylindrical projection)



11. Viewpoint 2:
Agnew Monument

Location (OS Grid reference) 200834 E 564617 N
Direction of view 240°
Horizontal field of view 90° (cylindrical projection)



12. Viewpoint 3:
Parking Area, near Killantringan Lighthouse

Location (OS Grid reference) 198245 E 556742 N
Direction of view: 345°
Horizontal field of view: 90° (cylindrical projection)



13. Viewpoint 4: South Cairn

Location (OS Grid reference) 196890 E 569230 N
Direction of view 185°
Horizontal field of view 90° (cylindrical projection)





14a. Environmental Impact Assessment

Environmental Impact Assessment

As was done for the consented Larbrax Wind Farm in 2015, an Environmental Impact Assessment Report (EIAR) is being prepared and will be submitted with the planning application to Dumfries and Galloway Council. We have already prepared an EIA Scoping Report which sets out which effects will be assessed in the EIAR and our proposed approach to doing so for each environmental topic. The EIA Scoping Report can be viewed on the Dumfries and Galloway Council planning portal (reference 23/2032/SCO). The EIA Scoping Report was submitted to Dumfries and Galloway Council in September 2023 with a request for an EIA Scoping Opinion as to which effects should be assessed and how in the EIA. Details are provided below of the environmental topics which are proposed to be assessed in the EIAR.




Revised Larbrax Wind Farm www.larbraxwindfarm.co.uk

| Landscape and Visual Amenity | Geology, Hydrology, Hydrogeology and Peat | Ecology | Ornithology |
|---|--|--|--|
| The landscape and visual amenity assessment (LVIA) will assess effects on local landscape and visual amenity (views), including from selected viewpoints, settlements and routes, including cumulatively with other existing or proposed wind farms. The LVIA will also include a Residential Visual Amenity Assessment (RVAA) which will assess effects on views from nearby properties. | The EIA will assess effects on geology, hydrology, hydrogeology (groundwater) peat, private water supplies (PWS) and groundwater dependent terrestrial ecosystems (GWDTEs). A peat management plan (PMP) will be prepared to identify the quantity to be excavated during construction and how this will be responsibly managed. | An ecological impact assessment (EclIA) will consider the potential impacts of the revised Larbrax Wind Farm on important ecological features (such as important habitats of conservation value, protected species including bats and designated nature sites) during construction and operation. The Outline Biodiversity Enhancement and Management Plan (OBEMP) will be prepared to support the EclIA, and will identify proposals for conserving, restoring and enhancement biodiversity as part of the wind farm. | The EIA will include an assessment of effects of the revised Larbrax Wind Farm on bird populations during construction and operation, particularly legally protected species and other notable birds of high nature conservation value which may be breeding nearby. The assessment will also consider collision risk effects on species of high nature conservation value which are known to fly over the Site. |



14b. Environmental Impact Assessment

| Noise | Cultural Heritage | Access, Traffic and Transport | Shadow Flicker | Climate Change |
|--|---|---|--|--|
| <p>The effects of noise associated with construction vehicles, plant and machinery and aerodynamic noise produced by the blades whilst they operate at the nearest residential receptors will be assessed. A cumulative assessment will consider the impact of operational noise from other nearby wind farms in addition to the revised Larbrax Wind Farm. The noise assessment will establish the limits against which the operational turbines will need to comply.</p> | <p>The potential effects on known heritage assets within the site (including unknown buried archaeology), setting effects on assets within the wider area and cumulative effects on designated and non-designated historic assets of local, regional, national and international importance will be assessed. The assessment will be accompanied by visualisations.</p> | <p>Potential traffic related environmental effects, such as delays, impacts on pedestrian journeys and accidents and safety during the construction period will be assessed. Cumulative effects on transport and traffic will be included in this assessment where the revised Larbrax Wind Farm could overlap with other known projects using the same road network. Measures to minimise disturbance from increased HGV traffic, staff traffic and the movement of abnormal loads on local communities and the local road network during construction will be proposed.</p>  | <p>Shadow flicker occurs when turbines cause a flickering effect inside a building where sunlight passes through a window or door. Even though shadow flicker should not be an issue due to the distance of the turbines from properties, if any properties were to be located within a 130-degree segment to the turbines then they will require to be assessed for shadow flicker. The assessment will quantify the worst-case level of exposure (if any) which the nearest residential receptors could experience once the revised Larbrax Wind Farm is operational and how this will be effectively managed.</p> | <p>A carbon balance assessment will measure the sources of carbon emissions associated with the project during construction as well as carbon savings generated by operating the project. The assessment will also consider resilience of the project to projected climate change effects and how it may affect the ability of receptors to adapt to climate change.</p> |
| <p>The EIA will be available for viewing electronically on the Orsted website as well as the Dumfries and Galloway Council online planning portal. It will also be made available at Dumfries and Galloway Council offices for viewing in person. Once the planning application is submitted, Dumfries and Galloway Council will invite comments on the content of the EIA from statutory and non-statutory consultees, including internal council departments, SEPA, NatureScot, Historic Environment Scotland and local community councils before making a decision on the application. Members of the public will be able to make representations to Dumfries and Galloway Council on the proposals. Information on how to make representations will be advertised by Dumfries and Galloway Council in the local press.</p> | | | | |

15a. Our Work to Date

Our Work to Date

We are currently undertaking extensive environmental surveys to optimise the turbine layout and to minimise impacts on the environment and people. We have completed the following surveys to date which will inform the assessments within the EIA:

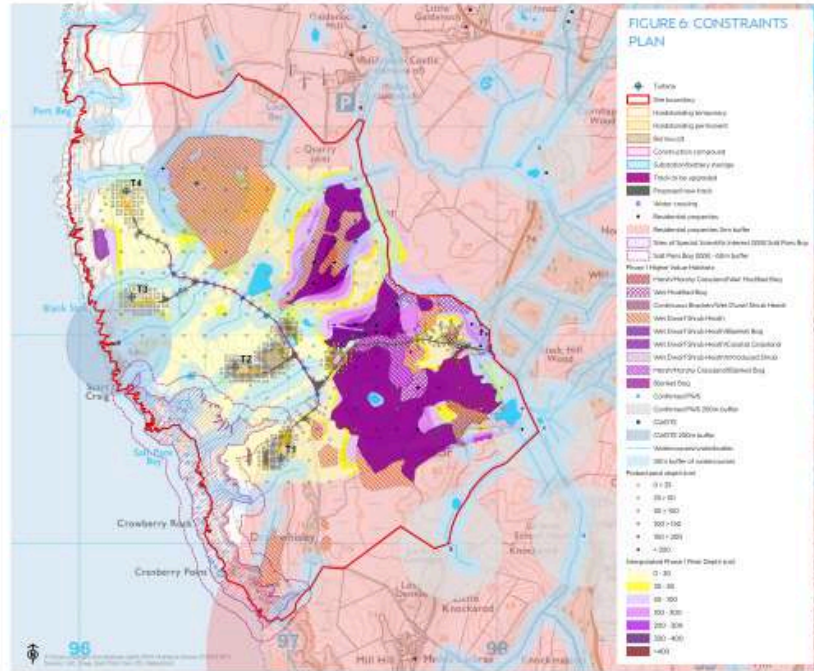
| Peat | Private Water Supply Questionnaires | Traffic and Transport | Noise |
|---|---|--|---|
| <p>Phase 1 and 2 peat probing was undertaken in July 2023 and May 2024 respectively with results from these peat surveys supplemented by peat depth data from 2013, to provide a comprehensive overview of peat present within the site. Findings include:</p> <ul style="list-style-type: none"> • 86.1% of peat probes with peat depths of less than 50cm (meaning no peat); • 8.5% of peat probes recorded peat depths between 50cm and 100cm; and • 5.4% of the probed locations showed peat depths greater than 100cm with a maximum depth of 540cm. <p>The peat data will inform the preparation of a Peat Management Plan (PMP) and Peat Landslide Hazard Risk Assessment (PLHRA) (if required). A Peatland Condition Assessment will also be undertaken, to inform discussions on potential peatland enhancement or restoration opportunities which could be proposed within the OBEMP.</p> <p>A key design objective has been to avoid peatland habitats as far as possible through the careful placement of turbines and infrastructure. Peat excavation and re-use will be fully detailed in the PMP.</p> | <p>Avoiding impacts to local residents' private water supplies is of utmost importance to Ørsted. As such, our hydrology consultants issued questionnaires to 10 nearby properties in order to determine whether these properties have their own supply in the vicinity of the site so that we can avoid impacts through design as far as possible. None of the private water supply sources are located close to infrastructure and are therefore of no concern.</p> | <p>We have been undertaking traffic surveys and doing research to obtain information on existing traffic flows for roads which are likely to be used by construction traffic. This data will be used to assess the traffic and transport effects in the EIA. We have also been investigating the off-site works which may be required to facilitate the safe transportation of turbine components to the site and will present this in a Route Survey Report (RSR) within the EIA.</p> | <p>We undertook noise monitoring at four residential properties surrounding the site between November 2021 and January 2022 using the most robust survey method available. The noise survey measured background noise in a wide range of wind conditions, and are considered to be representative of the baseline noise conditions of the local area. The baseline noise levels will be used to determine operational noise limits for each property included in the operational noise assessment. It is against these limits which the revised Larbrax Wind Farm will be assessed, and it is likely that these will be used to inform a planning noise condition which limits the levels of exposure for local residents. A key design objective has been to ensure that the operational noise limits for each property are not exceeded, including when Larbrax Wind Farm is operating alongside the existing single turbines nearby.</p> |

15b. Our Work to Date

Ecology and Ornithology

Updated habitat and protected species surveys were completed in summer 2023 to provide validation and updates to surveys undertaken in 2013, 2017 and 2021. The latest surveys recorded the presence of badger and some habitats of high conservation value such as blanket bog, wet modified bog and wet dwarf shrub heath, which is consistent with the results of the previous surveys. Avoiding blanket bog habitat and other priority habitats where possible, was a key design objective for the access track. Bat roost potential surveys have also been undertaken to understand potential bat constraints associated with the loss of woodland for the new access junction. No trees or structures were noted as being suitable for roosting bats.

Additional bird surveys were completed for one breeding season between March and August 2021. Flight activity surveys recorded 12 species of high conservation value such as barn owl, peregrine falcon, hen harrier, greylag goose and merlin. No breeding raptors were found within the site, however barn owl and peregrine falcon were known to be breeding outside the site. Breeding wader surveys found species such as curlew, lapwing, oystercatcher and snipe. No evidence of black grouse was found. Breeding locations and key foraging locations of target species have been taken into consideration in the design process to minimise the risk of disturbance, displacement and collision effects.





16. Next Steps and Feedback

Next Steps and Feedback

We place great importance on the impact the project may have on the environment and local community, and are therefore keen to have your feedback before we submit the planning application.

We would be grateful if you could spare five minutes to complete our questionnaire. You can also send your comments or feedback to us as follows:

E: larbrax@orsted.com

P: Orsted, 2nd Floor, 2 Lochrin Square, 96 Fountainbridge, Edinburgh EH3 9QA

You will still be able to view the information presented in this exhibition on our website (www.larbraxwindfarm.co.uk) after this date.

The timeline adjacent set out the next steps proposed for the revised Larbrax Wind Farm project and indicative timescales.

Thank you for taking the time to visit this public exhibition. Please leave any comments you may have in the questionnaire provided



Appendix N - Feedback form from second round of consultation events



Your feedback is vital to our approach to the revised Larbrax Wind Farm proposal. We invite you to share your views.

1. What are your reasons for attending this session?

- Local resident Interested in renewable energy Other

Please give details

2. Have you found this information useful?

- Yes No Don't know

Please give details

3. Where did you find out about this exhibition?

- Newsletter Newspaper Website Email Other

4. In general, are you supportive of the revised proposals for Larbrax Wind Farm?

- Yes No Don't know

Please give details



5. Do you have any comments or queries on the proposed layout and design for the revised Larbrax Wind Farm?

Please give details

6. If approved, Larbrax Wind Farm will bring a community benefit fund of around £100,000 for every year that the wind farm is in operation. Are there any local priorities and projects that you would like to see supported?

Please give details

7. Do you have any general feedback on the development of Larbrax Wind Farm and/or ideas that you would like us to consider as we progress with the design and the wider project?

Yes No

Please give details

8. Do you wish to be kept informed directly of project updates?

Yes No

If yes, please provide your contact details which we will store in full compliance with GDPR.

Name: Email:

Address:

Thank you for taking the time to fill in this feedback form. Please leave your completed form with a member of the project team, or send it back to us via email or post.

If you wish to contact us to discuss the project, please get in touch:

Email: larbrax@orsted.com

Phone: 0131 243 9100

Post: Orsted, 2nd Floor, 2 Lochrin Square, 96 Fountainbridge, Edinburgh EH3 9QA

www.larbraxwindfarm.co.uk

Appendix O - Post-round two exhibition email to those who registered for updates

BY EMAIL ONLY

Monday July 15th 2024

Thank you for your interest – Revised Larbrax Wind Farm Proposal

On behalf of our project team at Orsted, I would like to thank you for registering your interest in our revised proposals for Larbrax Wind Farm.

For those of you who did not make it along to our second round of community consultation events last month, you can view the information boards we shared via the link on our website [here](#) (in the Find out more section). We hope that you find this information useful.

As a reminder, our proposal now consists of:

- Up to four wind turbines
- Each up to 149.9m in height
- Generating 20MW of clean, green energy
- Delivering £5,000 per MW of installed wind energy capacity, equating to £100,000 in annual community benefit for the local area

As shared at the events in Leswalt, Portpatrick and Stranraer, we hope to submit our planning application to Dumfries and Galloway Council this autumn. Once we do, we will write to you again with details about where you will be able to view that.

Our thanks go to everyone who has taken the time to attend an event or been in-touch so far during this application process. Your feedback is really important to us.

Should you have any questions or wish to discuss the proposals in the meantime, please do not hesitate to contact me on the email addresses undernoted.

Yours sincerely

Tom Parkyn
Portfolio Development Manager
Orsted Onshore UK Limited

Email: tompa@orsted.com, larbax@orsted.com