

Chapter 5: Landscape and Visual Impact Assessment - Figures

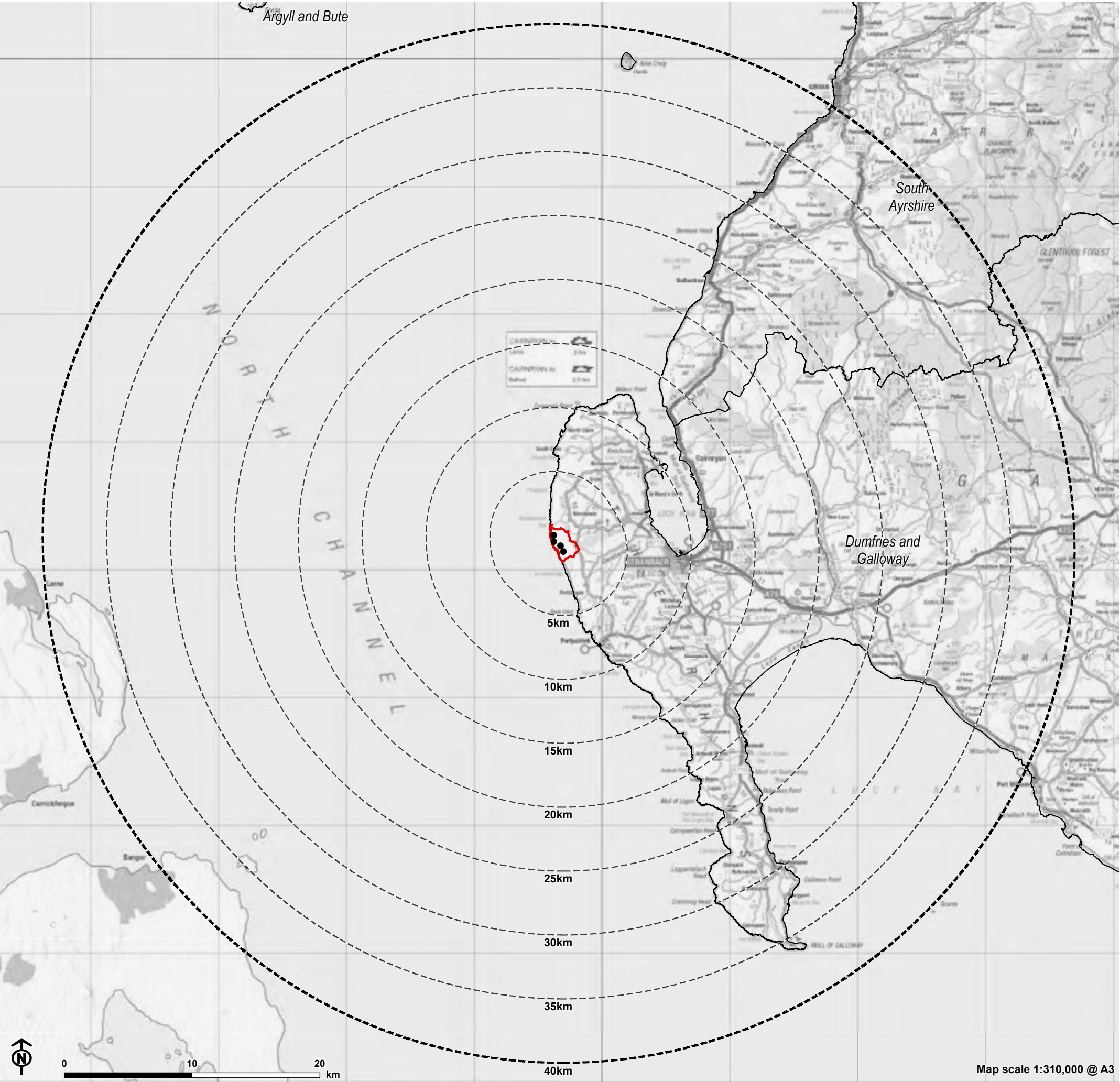


Figure 5.1.1: Landscape and Visual Impact Assessment Study Area

- Turbine
- Site boundary
- 5km intervals from outermost turbines
- 40km LVIA study area
- Local authority boundary



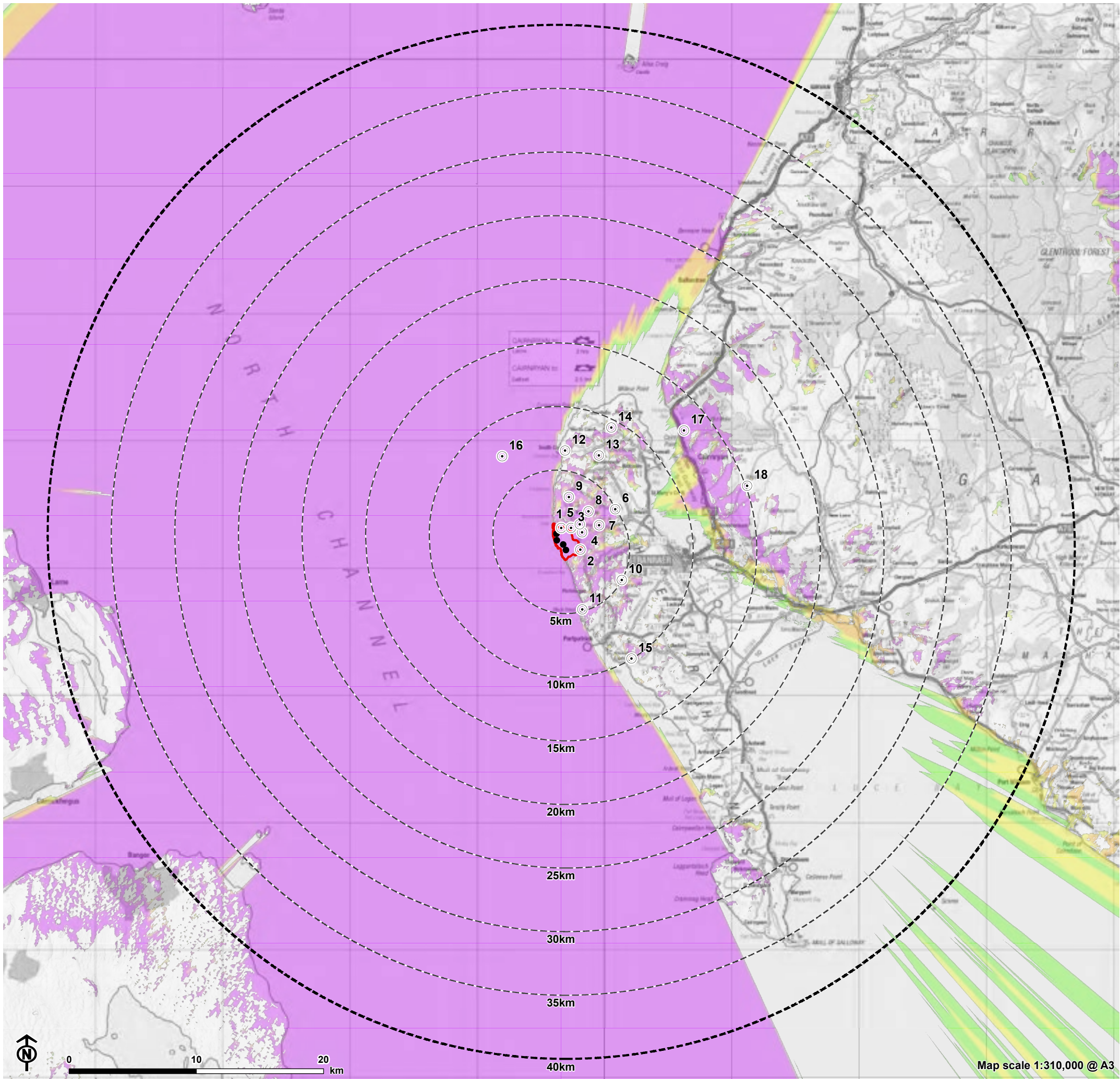
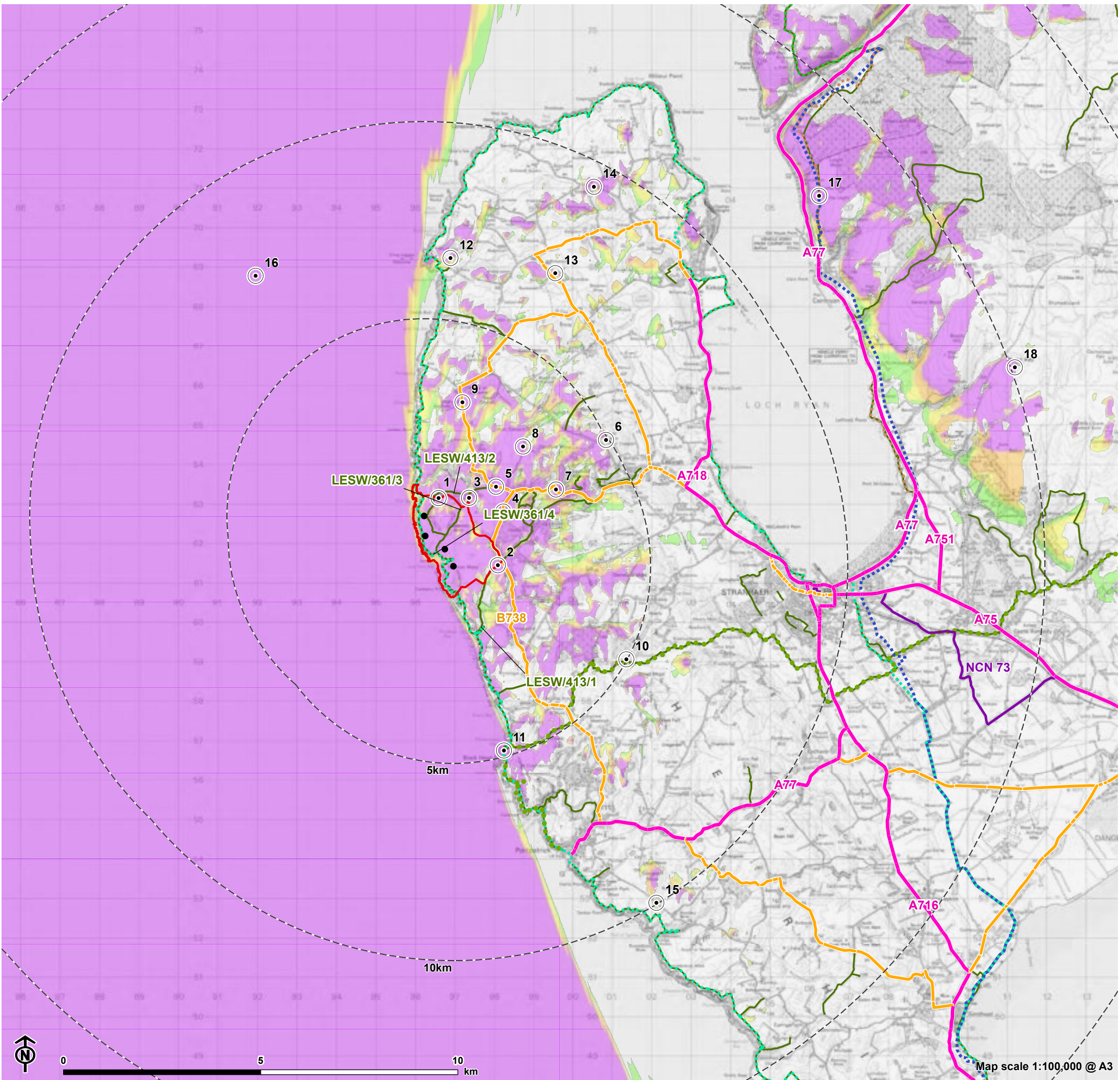


Figure 5.1.2a: Blade Tip Height (149.9m) Zone of Theoretical Visibility (ZTV) and Viewpoint Locations

- Turbine
- ▭ Site boundary
- - - 5km intervals from outermost turbines
- - - 40km LVIA study area
- Zone of Theoretical Visibility**
- 1 turbine visible
- 2 turbines visible
- 3 turbines visible
- 4 turbines visible
- Viewpoint
- 1: Core Path west of Meikle Galdenoch
- 2: Core Path Larbrax Moor
- 3: Meikle Galdenoch near Parking Area
- 4: B738 near Lochlaw Cottage
- 5: B738 near Meikle Galdenoch
- 6: Agnew Monument
- 7: Lochnaw Loch Shore
- 8: Slewdown Hill
- 9: High Aucheneel
- 10: Southern Upland Way near Mulloch Hill
- 11: Parking Area near Killantringan Lighthouse
- 12: South Cairn
- 13: Marian Tower
- 14: High Ardwell
- 15: Minor Road west of North Port o' Spittal
- 16: Stranraer to Belfast Ferry
- 17: Little Laight
- 18: Braid Fell

Note:
The ZTV is calculated to individual turbine blade tip height (up to 149.9 m) from a viewing height of 2 m above ground level. The terrain model assumes bare ground and is derived from OS Terrain 5 and OSNI 10m DTM height data. Earth curvature and atmospheric refraction have been taken into account. The ZTV was calculated using ArcPro 3.2.0.

Figure 5.1.2b: Blade Tip Height (149.9m) Zone of Theoretical Visibility (ZTV), Viewpoint Locations and Visual Receptors to 10km



- Turbine
- Site boundary
- 5km intervals from outermost turbines
- 40km LVIA study area
- A Road
- B Road
- National Cycle Network (NCN 73)
- Core path
- Southern Upland Way
- Ayrshire Coastal Path
- Mull of Galloway Trail
- Loch Ryan Coastal Path (indicative)
- Rhins of Galloway Coastal Path (indicative)

- Viewpoint
- 1: Core Path west of Meikle Galdenoch
- 2: Core Path Larbrax Moor
- 3: Meikle Galdenoch near Parking Area
- 4: B738 near Lochlaw Cottage
- 5: B738 near Meikle Galdenoch
- 6: Agnew Monument
- 7: Lochnaw Loch Shore
- 8: Slewdown Hill
- 9: High Aucheneel
- 10: Southern Upland Way near Mulloch Hill
- 11: Parking Area near Killantringan Lighthouse
- 12: South Cairn
- 13: Marian Tower
- 14: High Ardwell
- 15: Minor Road west of North Port o' Spittal
- 16: Stranraer to Belfast Ferry
- 17: Little Laight
- 18: Braid Fell

- Zone of Theoretical Visibility**
- 1 turbine visible
 - 2 turbines visible
 - 3 turbines visible
 - 4 turbines visible

Note:
The ZTV is calculated to individual turbine blade tip height (up to 149.9 m) from a viewing height of 2 m above ground level. The terrain model assumes bare ground and is derived from OS Terrain 5 and OSNI 10m DTM height data. Earth curvature and atmospheric refraction have been taken into account. The ZTV was calculated using ArcPro 3.2.0.

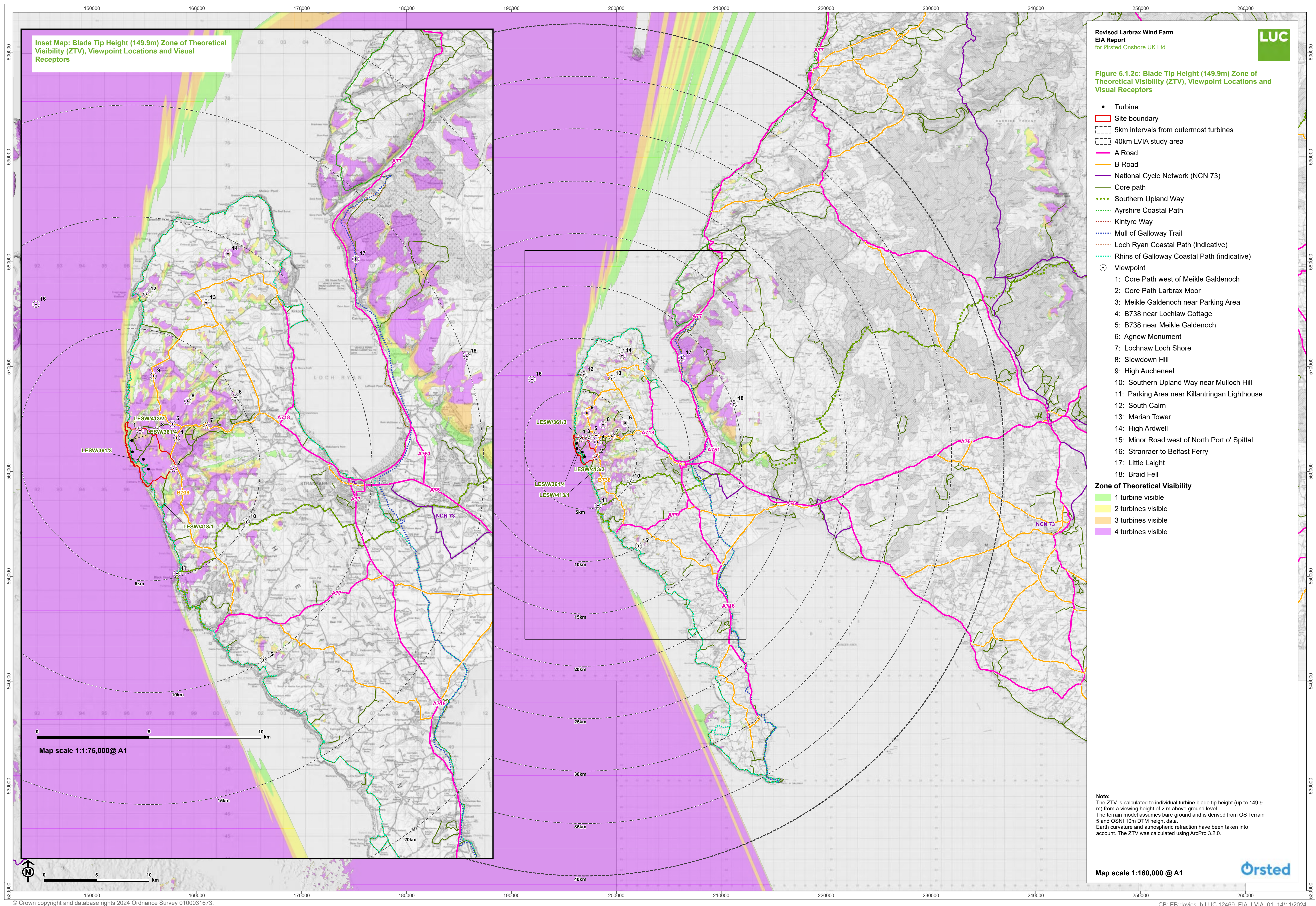


Figure 5.1.2c: Blade Tip Height (149.9m) Zone of Theoretical Visibility (ZTV), Viewpoint Locations and Visual Receptors

- Turbine
 - Site boundary
 - 5km intervals from outermost turbines
 - 40km LVIA study area
 - A Road
 - B Road
 - National Cycle Network (NCN 73)
 - Core path
 - Southern Upland Way
 - Ayrshire Coastal Path
 - Kintyre Way
 - Mull of Galloway Trail
 - Loch Ryan Coastal Path (indicative)
 - Rhins of Galloway Coastal Path (indicative)
 - Viewpoint
 - 1: Core Path west of Meikle Galdenoch
 - 2: Core Path Larbrax Moor
 - 3: Meikle Galdenoch near Parking Area
 - 4: B738 near Lochlaw Cottage
 - 5: B738 near Meikle Galdenoch
 - 6: Agnew Monument
 - 7: Lochnaw Loch Shore
 - 8: Slewdown Hill
 - 9: High Aucheneel
 - 10: Southern Upland Way near Mulloch Hill
 - 11: Parking Area near Killantringan Lighthouse
 - 12: South Cairn
 - 13: Marian Tower
 - 14: High Ardwell
 - 15: Minor Road west of North Port o' Spittal
 - 16: Stranraer to Belfast Ferry
 - 17: Little Laight
 - 18: Braid Fell
- Zone of Theoretical Visibility**
- 1 turbine visible
 - 2 turbines visible
 - 3 turbines visible
 - 4 turbines visible

Note:
The ZTV is calculated to individual turbine blade tip height (up to 149.9 m) from a viewing height of 2 m above ground level.
The terrain model assumes bare ground and is derived from OS Terrain 5 and OSNI 10m DTM height data.
Earth curvature and atmospheric refraction have been taken into account. The ZTV was calculated using ArcPro 3.2.0.

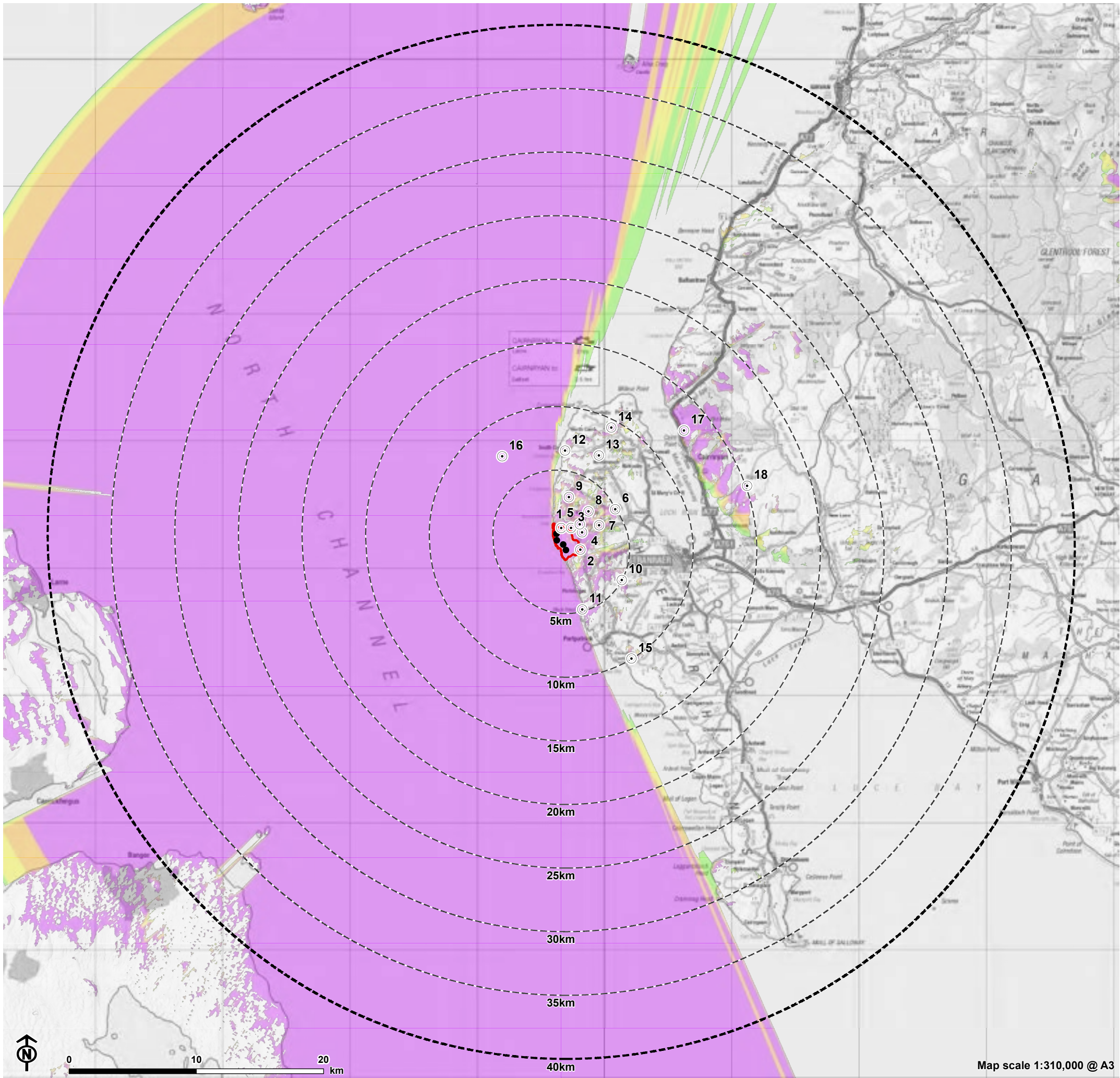


Figure 5.1.3a: Hub Height (83.4m) Zone of Theoretical Visibility (ZTV) and Viewpoint Locations

- Turbine
- ▭ Site boundary
- - - 5km intervals from outermost turbines
- - - 40km LVIA study area
- Zone of Theoretical Visibility**
 - 1 turbine visible
 - 2 turbines visible
 - 3 turbines visible
 - 4 turbines visible
- Viewpoint
 - 1: Core Path west of Meikle Galdenoch
 - 2: Core Path Larbrax Moor
 - 3: Meikle Galdenoch near Parking Area
 - 4: B738 near Lochlaw Cottage
 - 5: B738 near Meikle Galdenoch
 - 6: Agnew Monument
 - 7: Lochnaw Loch Shore
 - 8: Slewdown Hill
 - 9: High Aucheneel
 - 10: Southern Upland Way near Mulloch Hill
 - 11: Parking Area near Killantringan Lighthouse
 - 12: South Cairn
 - 13: Marian Tower
 - 14: High Ardwell
 - 15: Minor Road west of North Port o' Spittal
 - 16: Stranraer to Belfast Ferry
 - 17: Little Laight
 - 18: Braid Fell

Note:
The ZTV is calculated to individual turbine hub height (up to 83.4 m) from a viewing height of 2 m above ground level. The terrain model assumes bare ground and is derived from OS Terrain 5 and OSNI 10m DTM height data. Earth curvature and atmospheric refraction have been taken into account. The ZTV was calculated using ArcPro 3.2.0.

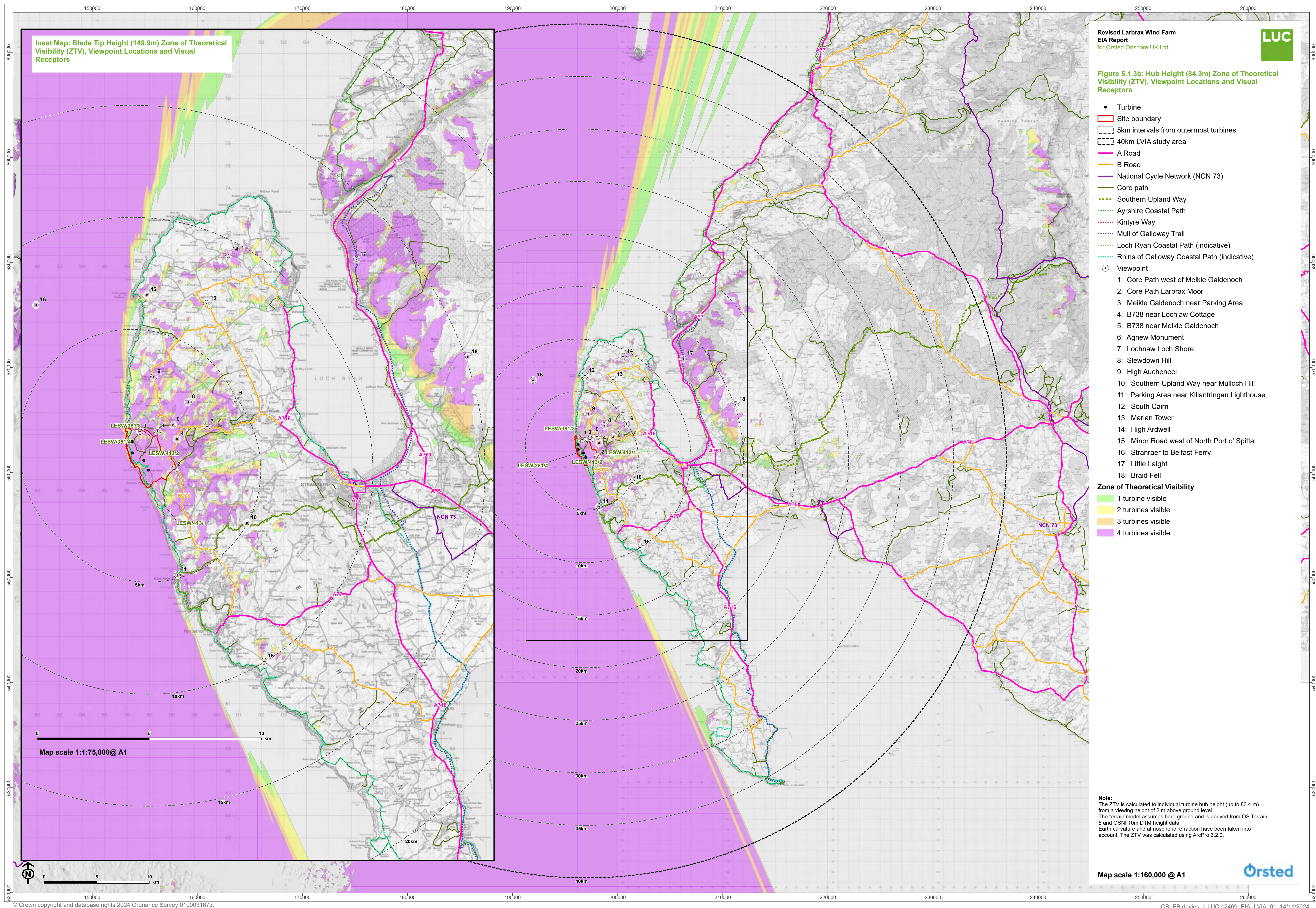


Figure 5.1.4: Landscape Character Types

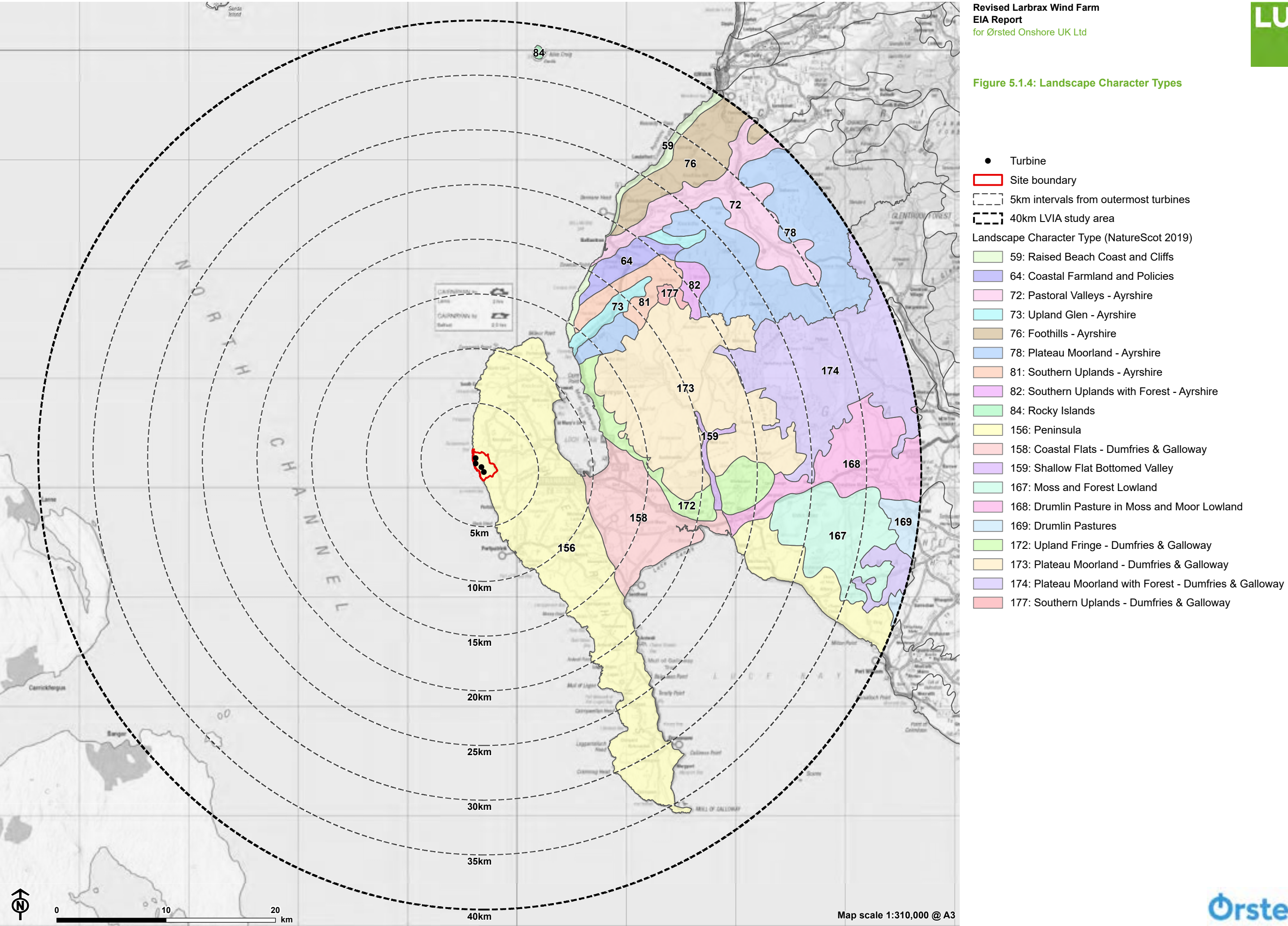
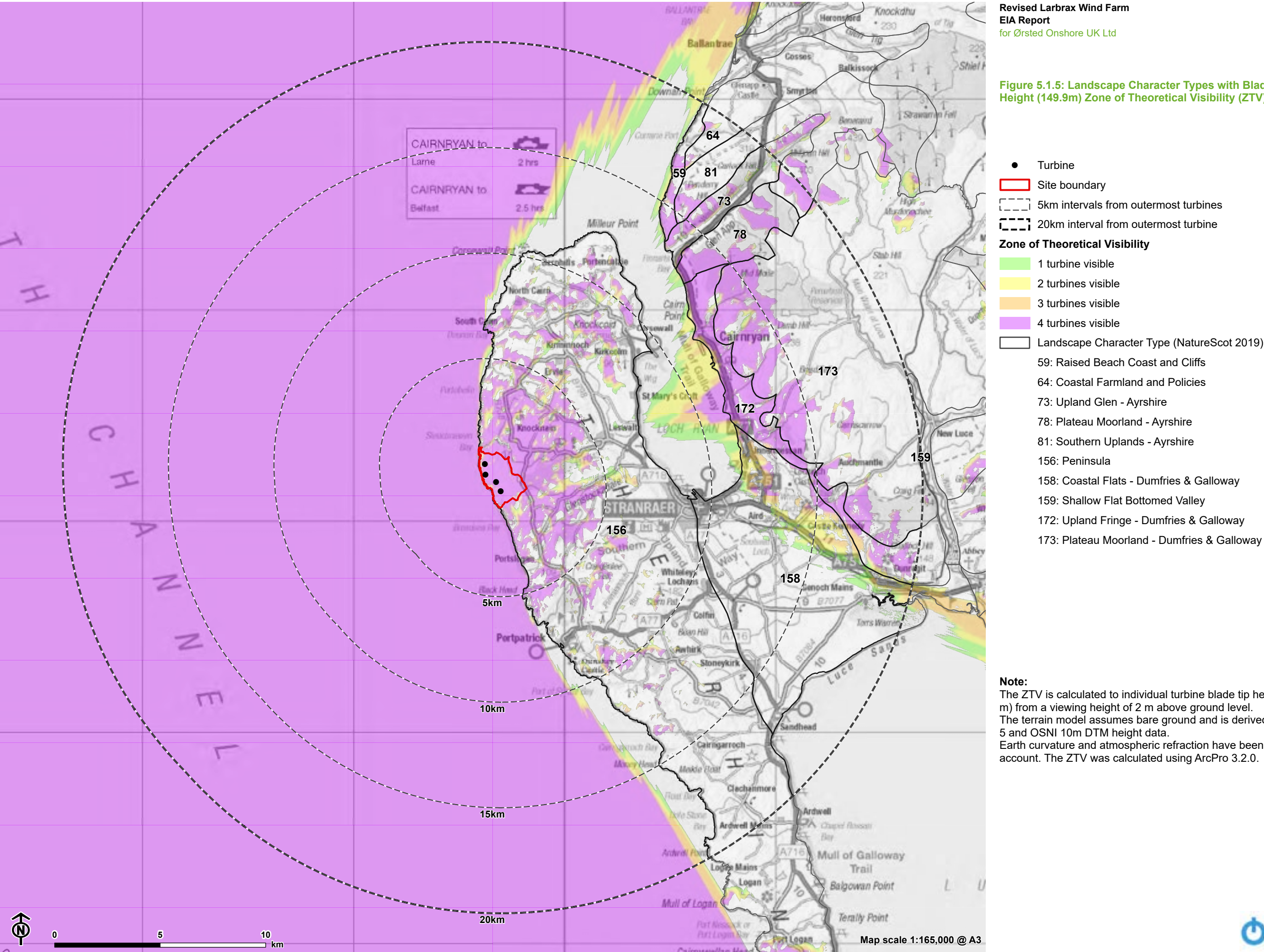


Figure 5.1.5: Landscape Character Types with Blade Tip Height (149.9m) Zone of Theoretical Visibility (ZTV) to 20km



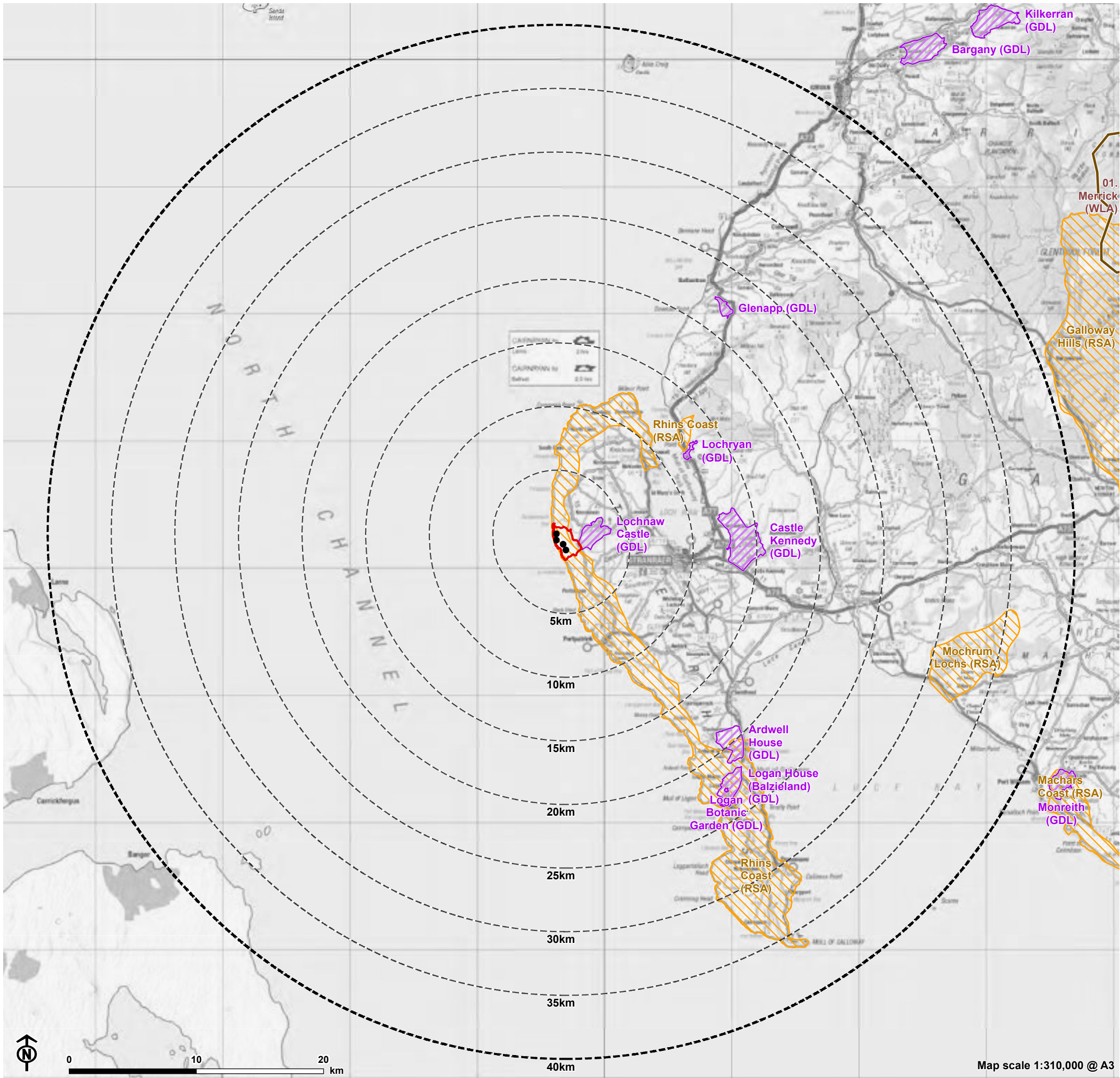
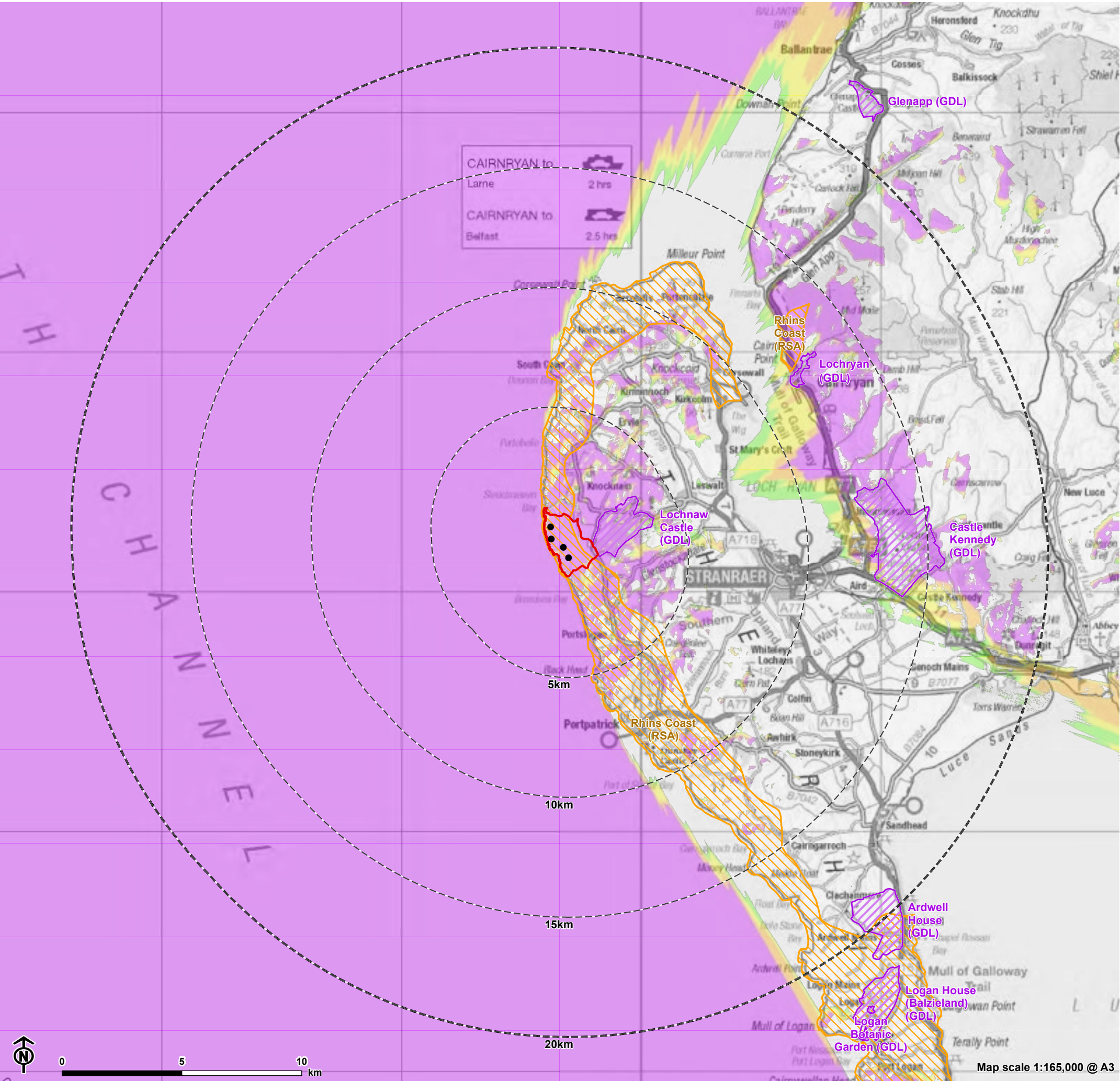


Figure 5.1.6: Designated Landscapes

- Turbine
- Site boundary
- 5km intervals from outermost turbines
- 40km LVIA study area
- Wild Land Area (WLA)
- Gardens and Designed Landscapes (GDL)
- Regional Scenic Area (RSA Dumfries & Galloway)

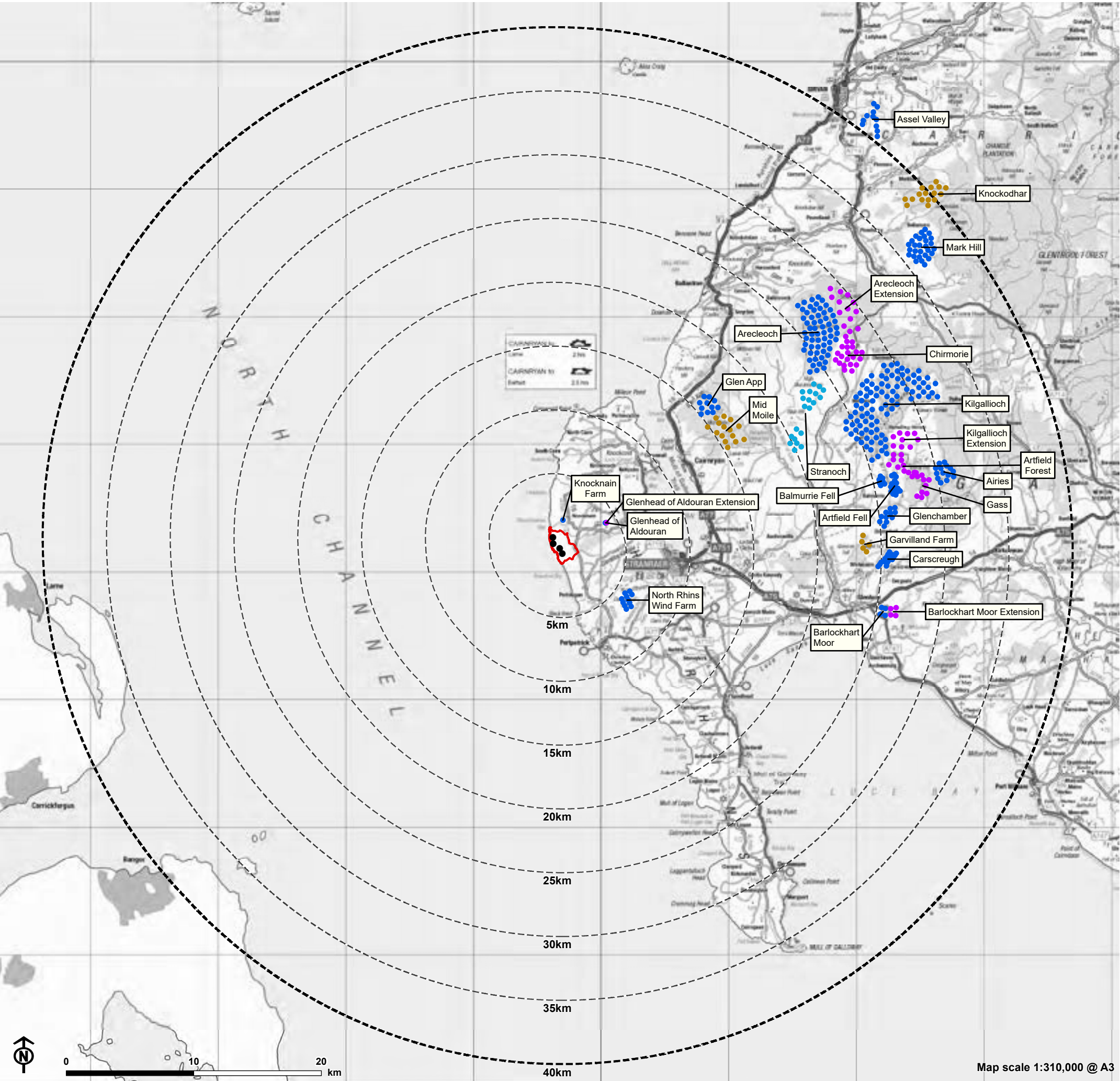
Figure 5.1.7: Designated Landscapes with Blade Tip Height (149.9m) Zone of Theoretical Visibility (ZTV) to 20km



- Turbine
 - Site boundary
 - Gardens and Designed Landscapes (GDL)
 - Regional Scenic Area (RSA Dumfries & Galloway)
- Zone of Theoretical Visibility**
- 1 turbine visible
 - 2 turbines visible
 - 3 turbines visible
 - 4 turbines visible

Note:
The ZTV is calculated to individual turbine blade tip height (up to 149.9 m) from a viewing height of 2 m above ground level. The terrain model assumes bare ground and is derived from OS Terrain 5 and OSNI 10m DTM height data. Earth curvature and atmospheric refraction have been taken into account. The ZTV was calculated using ArcPro 3.2.0.

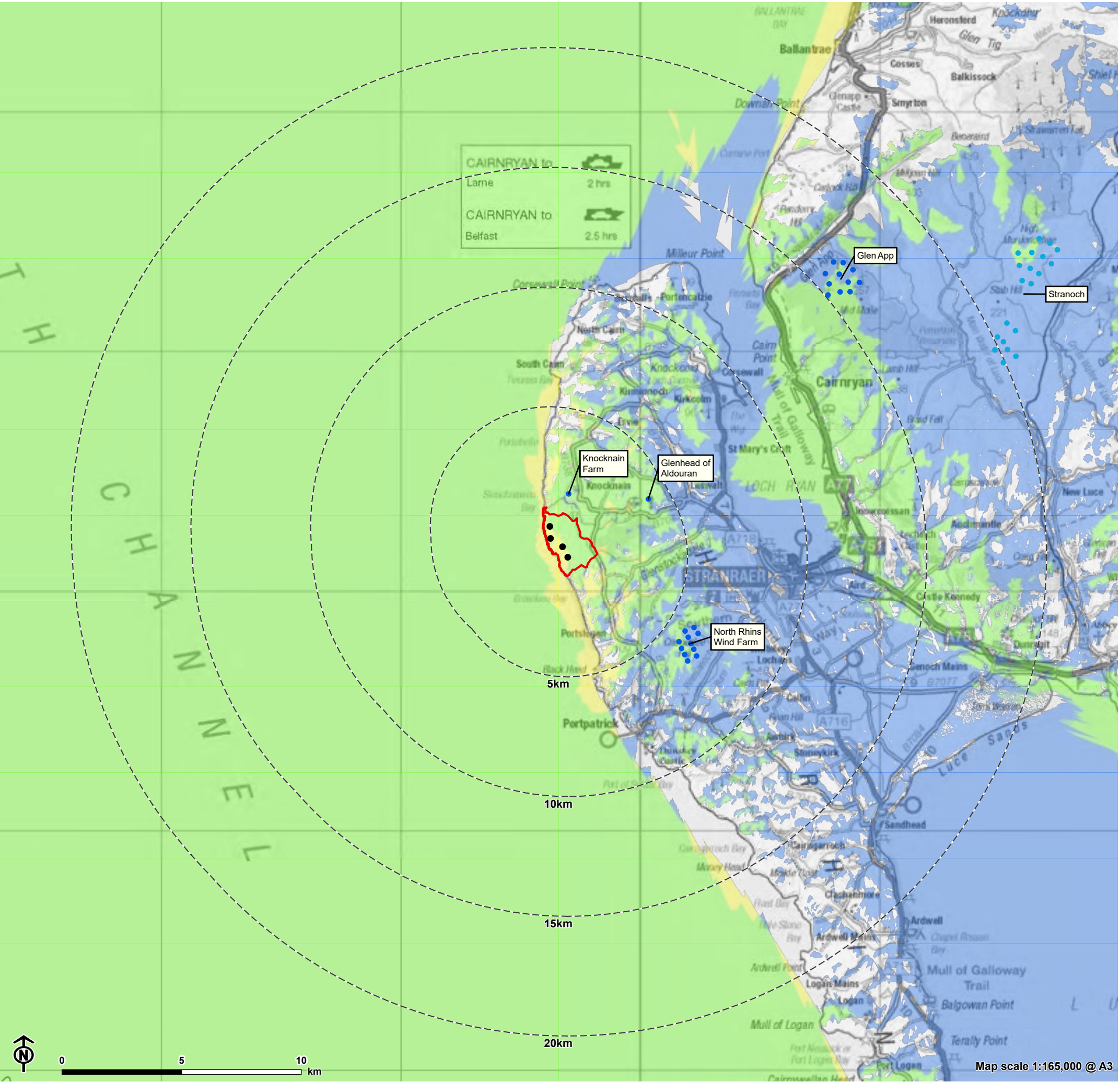
Figure 5.1.8: Wind Farms within 40km



- Turbine
 - ▭ Site boundary
 - 5km intervals from outermost turbines
 - 40km LVIA study area
- Wind farm layout (by status)**
- Operational
 - Under Construction
 - Consented
 - Application Submitted

Notes:
With the exception of Glenhead of Aldouran (and its extension), turbines under 50m to tip have been excluded. Single turbine beyond 5km have been excluded. Scoping stage schemes have been excluded. Cumulative Wind Farm list fixed as of 28th May 2024.

Figure 5.1.9: Cumulative Zone of Theoretical Visibility (CZTV)
- Operational and Under Construction Wind Farms and
Larbrax Wind Farm



- Turbine
- Site boundary
- 5km intervals from outermost turbines

Wind farm layout (by status)

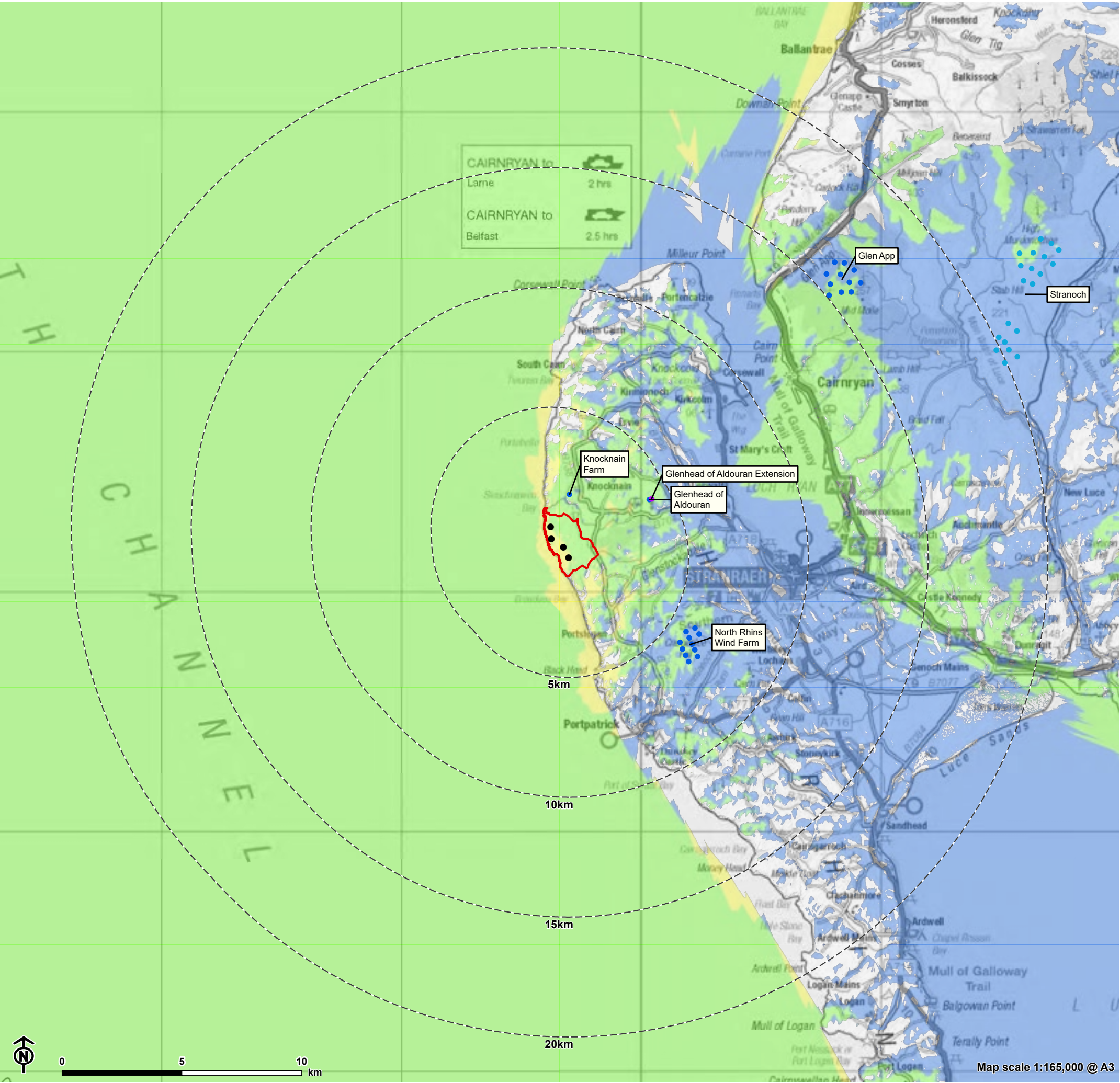
- Operational
- Under Construction

Combined blade tip theoretical visibility

- Other wind farms visible
- Larbrax Wind Farm visible
- Larbrax Wind Farm and other wind farms visible

Note:
The ZTV is calculated to individual turbine blade tip height from a viewing height of 2 m above ground level. The terrain model assumes bare ground and is derived from OS Terrain 5 height data. Earth curvature and atmospheric refraction have been taken into account. The ZTV was calculated using ArcPro 3.2.0.

Figure 5.1.10: Cumulative Zone of Theoretical Visibility (CZTV) - Operational, Under Construction and Consented Wind Farms and Larbrax Wind Farm



- Turbine
 - Site boundary
 - 5km intervals from outermost turbines
- Wind farm layout (by status)**
- Operational
 - Under Construction
 - Consented
- Combined blade tip theoretical visibility**
- Other wind farms visible
 - Larbrax Wind Farm visible
 - Larbrax Wind Farm and other wind farms visible

Note:
The ZTV is calculated to individual turbine blade tip height from a viewing height of 2 m above ground level. The terrain model assumes bare ground and is derived from OS Terrain 5 height data. Earth curvature and atmospheric refraction have been taken into account. The ZTV was calculated using ArcPro 3.2.0.

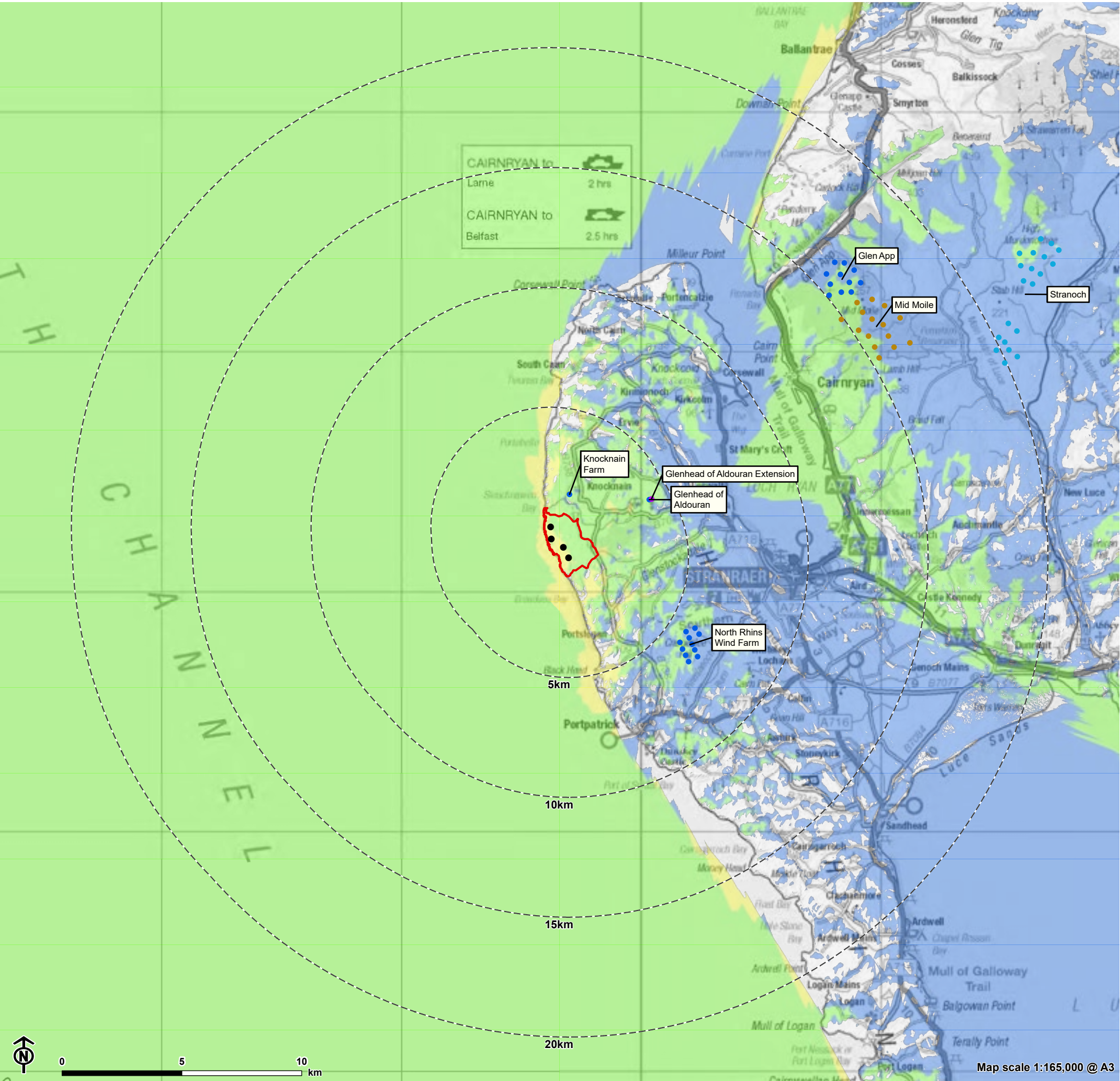


Figure 5.1.11: Cumulative Zone of Theoretical Visibility (CZTV) - Operational, Under Construction, Consented and Proposed Wind Farms and Larbrax Wind Farm

- Turbine
- Site boundary
- 5km intervals from outermost turbines

Wind farm layout (by status)

- Operational
- Under Construction
- Consented
- Application Submitted

Comparative Zone of Theoretical Visibility

- Other wind farms visible
- Larbrax Wind Farm visible
- Larbrax Wind Farm and other wind farms visible

Note:
The ZTV is calculated to individual turbine blade tip height from a viewing height of 2 m above ground level. The terrain model assumes bare ground and is derived from OS Terrain 5 height data. Earth curvature and atmospheric refraction have been taken into account. The ZTV was calculated using ArcPro 3.2.0.

